



HUMBOLDT COUNTY JAIL MEDICAL SHOWER

901 5TH STREET - EUREKA, CALIFORNIA

Copyright © 2018
All ideas, designs, arrangements and plans indicated or represented by this drawing are created by and the property of NICHOLS MELBURG ROSSETTO and used in connection with the specified project. No part of this drawing, design, arrangement or plan shall be used by, or disclosed to any person, firm or corporation for any purpose whatsoever without the written permission of NICHOLS MELBURG ROSSETTO.

NM & R
NICHOLS
MELBURG
ROSSETTO
ARCHITECTS + ENGINEERS
300 KNOLLCREST DRIVE
REDDING, CA 96002
(530) 222-3300 (530) 222-3538 FAX
<http://www.nmrdesign.com>

CONSULTANTS

GENERAL NOTES

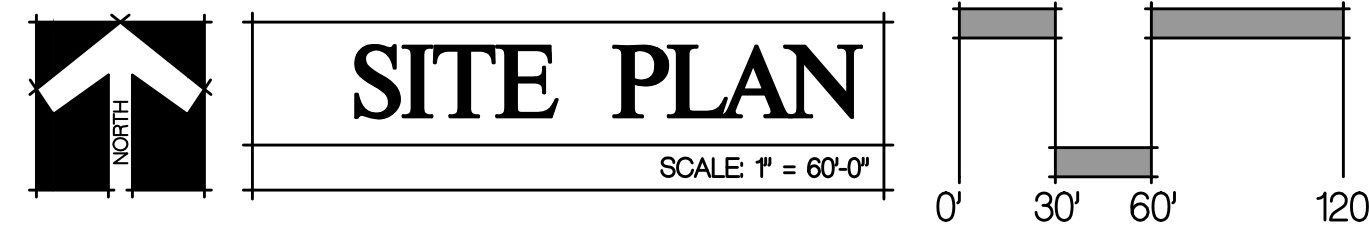
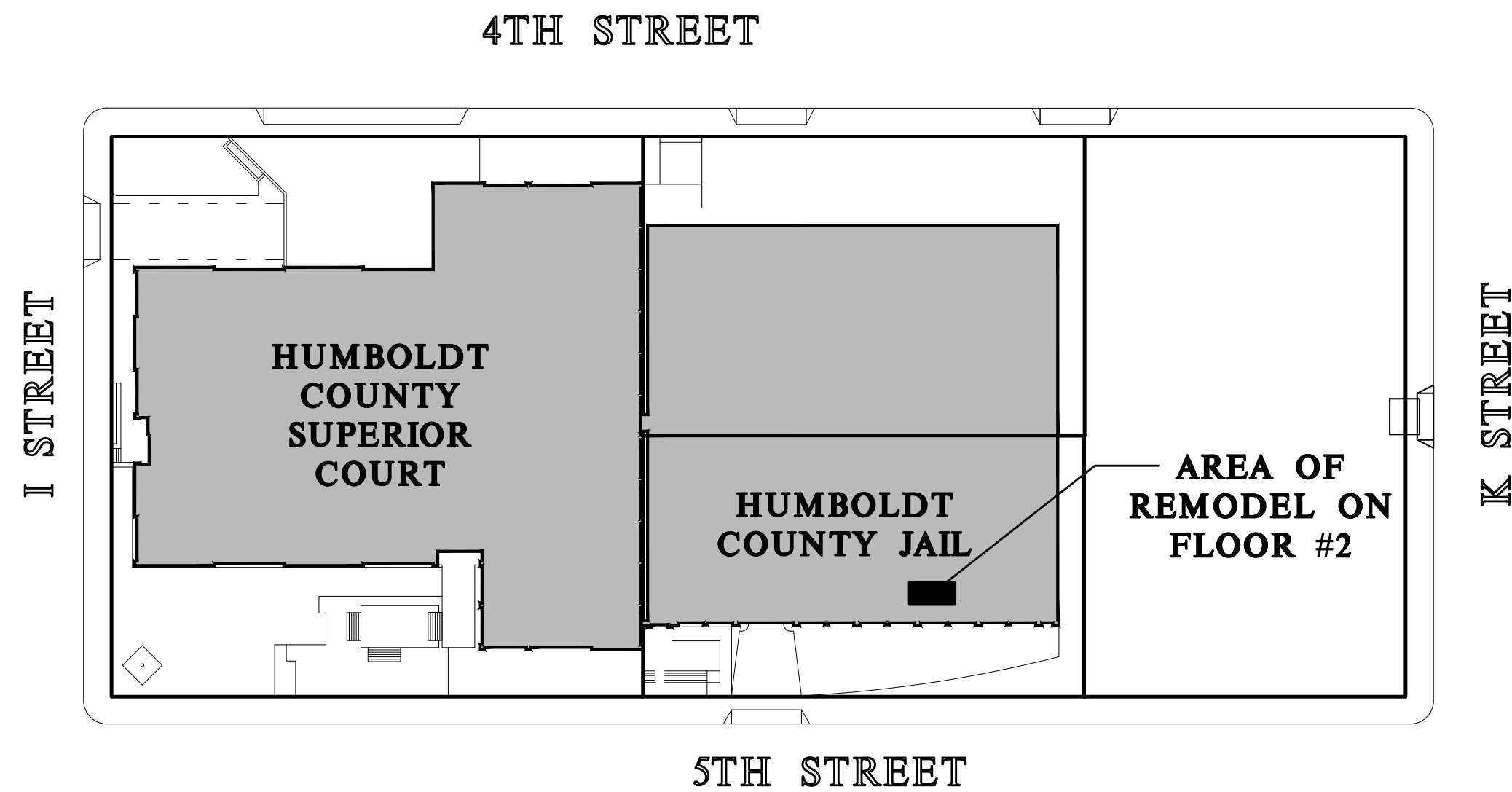
GENERAL:

1. ALL WORK AND MATERIALS SHALL BE IN FULL ACCORDANCE WITH ALL APPLICABLE ADOPTED ORDINANCES AND CODES. ANY DISCREPANCIES BETWEEN THESE CODES AND THE CONSTRUCTION DOCUMENTS SHOULD IMMEDIATELY BE BROUGHT TO THE ATTENTION OF THE COUNTY. THE CONSTRUCTION DOCUMENTS SHALL NOT BE CONSTRUED AS TO PERMIT WORK THAT DOES COMPLY WITH THESE CODES.
2. DIMENSIONS SHALL TAKE PRECEDENCE OVER ITEMS AS GRAPHICALLY DEPICTED IN THESE DRAWINGS. DO NOT SCALE DRAWINGS. DIMENSIONS NOTED AS "CLEAR" (CLR) ARE TAKEN TO THE FACE OF FINISH MATERIALS. VERIFY DIMENSIONS OF PREFABRICATED AND MANUFACTURED ITEMS AND COORDINATE ROUGH OPENINGS ACCORDINGLY.
3. WHERE CONSTRUCTION DETAILS ARE NOT SHOWN OR NOTED FOR ANY PART OF THE WORK, THE DETAILS SHALL BE THE SAME AS FOR OTHER SIMILAR WORK SHOWN ON DRAWINGS. IF SIMILAR WORK IS NOT DETAILED IN DRAWINGS, WORK SHALL FOLLOW INDUSTRY STANDARDS AND MANUFACTURER'S RECOMMENDATIONS AS ACCEPTABLE TO THE COUNTY.
4. ALL CONSTRUCTION SHALL BE IN STRICT CONFORMANCE WITH MANUFACTURER'S LATEST PUBLISHED SPECIFICATIONS AND INSTRUCTIONS. ALL DISCREPANCIES BETWEEN THESE SPECIFICATIONS AND INSTRUCTIONS AND THE CONTRACT DOCUMENTS SHALL BE BROUGHT TO THE ATTENTION OF THE COUNTY IN WRITING PRIOR TO COMMENCING WORK.
5. VERIFY ALL DIMENSIONS, EXISTING UTILITY LOCATIONS, AND EXISTING CONDITIONS AFFECTED BY THE CONTRACT PRIOR TO STARTING CONSTRUCTION. ANY DISCREPANCIES OR INCONSISTENCIES FOUND SHALL BE BROUGHT TO THE COUNTY'S ATTENTION BEFORE WORK PROCEEDS.

CONTRACTOR NOTICE

1. ALL WORK SHALL BE IN ACCORDANCE WITH APPLICABLE ADOPTED ORDINANCES, BUILDING CODES, AND FIRE PREVENTION CODES. REFER TO THE CODE SUMMARY FOR A LIST OF KNOWN APPLICABLE CODES. DISCREPANCIES BETWEEN THESE CODES AND THE CONSTRUCTION DOCUMENTS, IF DISCOVERED, SHALL PROMPTLY BE BROUGHT TO THE ATTENTION OF THE ARCHITECT. THE CONSTRUCTION DOCUMENTS SHALL NOT BE CONSTRUED AS PERMITTING WORK THAT DOES NOT COMPLY WITH APPLICABLE CODES.
2. DIMENSIONS SHALL TAKE PRECEDENCE OVER LOCATIONS OF ITEMS AS GRAPHICALLY DEPICTED IN THESE DRAWINGS. DIMENSIONS ARE TO FACE OF STUDS, CMU, OR SLAB, AND TO CENTERLINES OF STEEL MEMBERS, UNLESS NOTED OTHERWISE. DO NOT SCALE THESE DRAWINGS. DIMENSIONS NOTED AS "CLEAR" (CLR) ARE TAKEN TO THE FACE OF FINISH MATERIALS. VERIFY DIMENSIONS OF PREFABRICATED AND MANUFACTURED ITEMS AND COORDINATE ROUGH OPENINGS ACCORDINGLY.
3. WHERE CONSTRUCTION DETAILS ARE NOT SHOWN OR NOTED FOR ANY PART OF THE WORK, THE DETAILS SHALL BE THE SAME AS FOR OTHER SIMILAR WORK SHOWN ON THESE DRAWINGS. IF SIMILAR WORK IS NOT DETAILED IN DRAWINGS, WORK SHALL FOLLOW INDUSTRY STANDARDS AND MANUFACTURER'S RECOMMENDATIONS AS ACCEPTABLE TO THE OWNER.
4. ALL CONSTRUCTION SHALL BE IN CONFORMANCE WITH MANUFACTURER'S LATEST PUBLISHED SPECIFICATIONS AND INSTRUCTIONS. ALL DISCREPANCIES BETWEEN THESE SPECIFICATIONS AND INSTRUCTIONS AND THE CONTRACT DOCUMENTS SHALL BE BROUGHT TO THE ATTENTION OF THE ARCHITECT PRIOR TO COMMENCING AFFECTED PORTIONS OF THE WORK.
5. AT WALLS INDICATED AS BEING OF FIRE-RATED CONSTRUCTION WHERE PROTECTION OF OPENINGS IS REQUIRED, MAINTAIN FIRE-RESISTIVE WALL CONSTRUCTION AT BUILT-IN FIXTURES AS REQUIRED BY APPLICABLE CODES.
6. VERIFY ALL DIMENSIONS, EXISTING UTILITY LOCATIONS, AND EXISTING CONDITIONS AFFECTED BY THE WORK OF THIS PROJECT PRIOR TO STARTING CONSTRUCTION. ANY DISCREPANCIES OR INCONSISTENCIES FOUND SHALL BE BROUGHT TO THE ARCHITECT'S ATTENTION BEFORE WORK PROCEEDS.

SITE PLAN



PROJECT DATA

PROJECT DESCRIPTION:

THE HUMBOLDT COUNTY JAIL MEDICAL SHOWER PROJECT WILL REMODEL APPROXIMATELY 150 SQUARE FEET ON THE SECOND FLOOR OF THE EXISTING HUMBOLDT COUNTY JAIL, LOCATED AT 901 5TH STREET, EUREKA, CALIFORNIA. THE EXISTING MEDICAL SHOWER ROOM IS REMODELED FOR A NEW SHOWER. THE ADJACENT SLEEPING ROOM IS REMODELED TO INCLUDE A BUNK AND TOILET/SINK COMBINATION UNIT. THE PROJECT INCLUDES: DEMOLITION, CONCRETE, MASONRY, DETENTION DOORS/FRAMES, FINISHES, HVAC AND PLUMBING.

BUILDING ANALYSIS:

HUMBOLDT COUNTY JAIL WAS ORIGINALLY CONSTRUCTED IN 1995.

- | | |
|------------------------------------|----------------------------------|
| 1. OCCUPANCY CLASSIFICATION / USE: | I-3 (COUNTY JAIL) / B |
| 2. BUILDING CONSTRUCTION TYPE: | TYPE I-A |
| 3. NUMBER OF STORIES: | 4 STORIES |
| 4. ACTUAL BUILDING HEIGHT: | 66'-10" |
| 5. BUILDING AREA: | 59,808 SF. (I-3) / 3,184 SF. (B) |
| 6. AREA OF PROJECT: | 200 SQUARE FEET |
| 7. SEPARATED OR NON-SEP. USE: | SEPARATED USE BUILDING |
| 8. ALLOWABLE AREA PER CBC: | UNLIMITED |
| 9. AREA INCREASE: | N/A |
| 10. HEIGHT INCREASE: | N/A |
| 11. FIRE SPRINKLER: | YES |
| 12. FIRE ALARM: | YES / AUTOMATIC |
| 13. OTHER FIRE PROTECTION: | YES / KITCHEN |
| 14. SMOKE CONTROL SYSTEM: | YES |
| 15. ORIGINAL CONSTRUCTION DATE: | 1995 |
| 16. HIGH FIRE SEVERITY ZONE: | NO |
| 17. EMERGENCY RESPONDER RADIO: | YES |

CODES / STANDARDS

APPLICABLE CODES:

ALL WORK PERFORMED & PRODUCTS FURNISHED SHALL COMPLY AS APPLICABLE WITH THE LATEST REGULATIONS OF:

- TITLE 19 C.C.R. PUBLIC SAFETY, STATE FIRE MARSHAL REGULATIONS
- 2016 BUILDING STANDARDS ADMINISTRATIVE CODE, PART 1, TITLE 24 C.C.R.
- 2016 CALIFORNIA BUILDING CODE (CBC), PART 2, TITLE 24 C.C.R.
- 2016 CALIFORNIA ELECTRICAL CODE (CEC), PART 3, TITLE 24 C.C.R.
- 2016 CALIFORNIA MECHANICAL CODE (CMC), PART 4, TITLE 24 C.C.R.
- 2016 CALIFORNIA PLUMBING CODE (CPC), PART 5, TITLE 24 C.C.R.
- 2016 CALIFORNIA ENERGY CODE, PART 6, TITLE 24 C.C.R.
- 2016 CALIFORNIA FIRE CODE, PART 9, TITLE 24 C.C.R.
- 2016 CALIFORNIA EXISTING BUILDING CODE, PART 10, TITLE 24 C.C.R.
- 2016 CALIFORNIA GREEN BUILDING STANDARDS CODE, PART 11, TITLE 24 C.C.R.
- 2016 CALIFORNIA REFERENCED STANDARDS CODE, PART 12, TITLE 24 C.C.R.

APPLICABLE STANDARDS:

ALL WORK PERFORMED & PRODUCTS FURNISHED SHALL COMPLY AS APPLICABLE WITH THE LATEST REGULATIONS OF:

- 2016 NFPA 13 AUTOMATIC SPRINKLER SYSTEMS (CALIFORNIA AMENDED)
- 2013 NFPA 14 INSTALLATION OF STANDPIPE AND HOSE SYSTEMS (CALIFORNIA AMENDED)
- 2013 NFPA 20, PUMPS FOR FIRE PROTECTION
- 2013 NFPA 24, FIRE SERVICE MAINS (CALIFORNIA AMENDED)
- 2013 NFPA 72 NATIONAL FIRE ALARM CODE (CALIFORNIA AMENDED)

DEFERRED SUBMITTALS

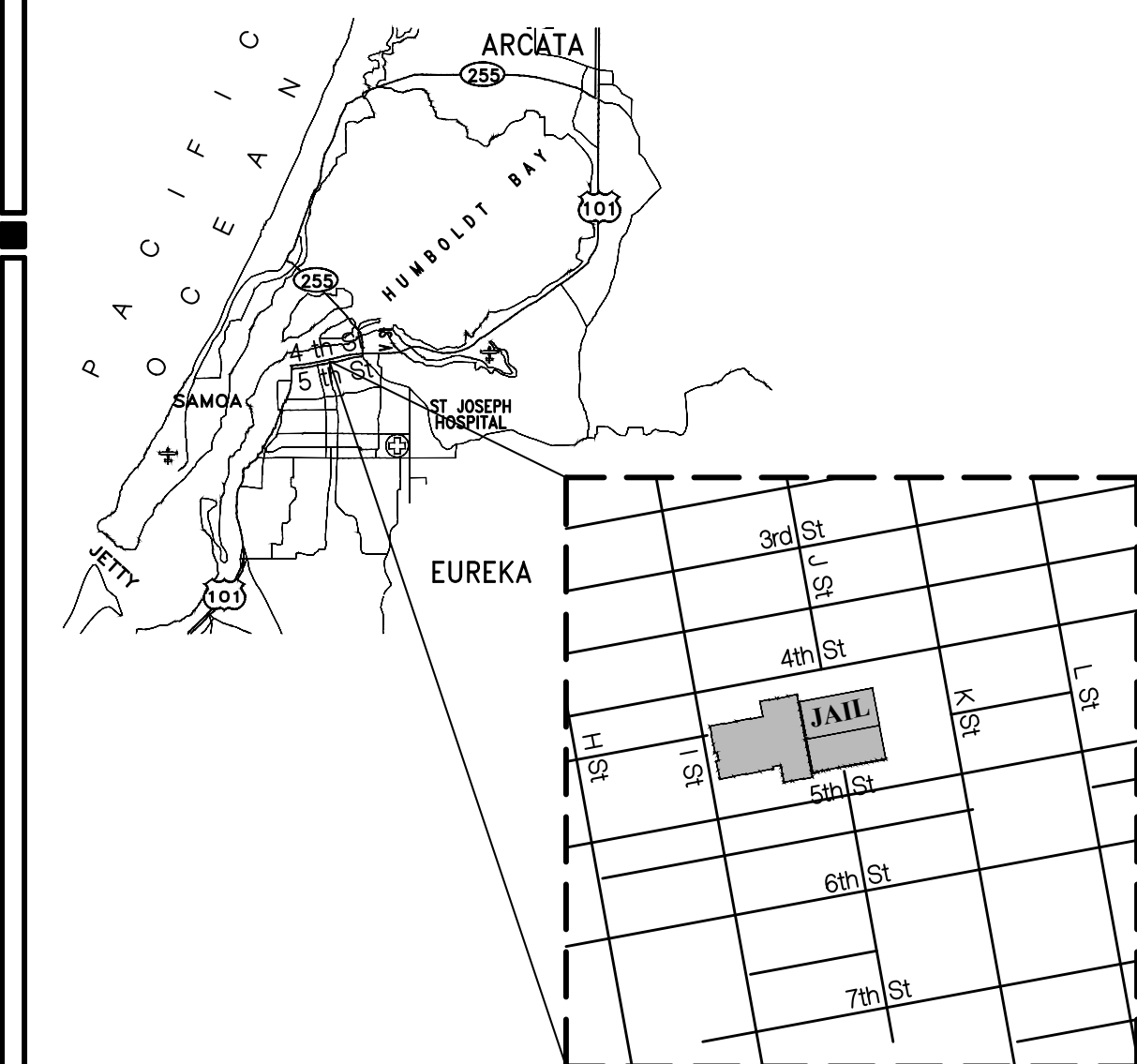
1. FIRE ALARM MODIFICATIONS FOR FIRE SMOKE DAMPER

DRAWING INDEX

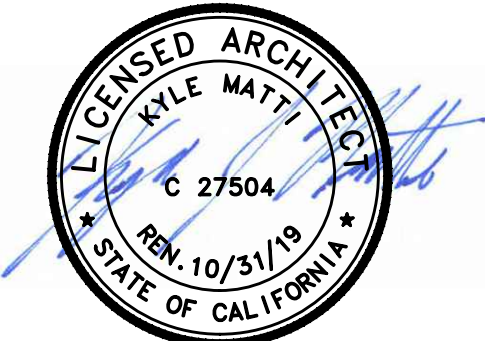
DWG. # DESCRIPTION

GENERAL	
G001	COVER SHEET
ARCHITECTURAL	
A200	OVERALL FLOOR PLAN & ACCESS/ WORK PROTOCOLS
A210	DEMO & NEW FLOOR & REFLECTED CEILING PLANS
A901	INTERIOR ELEVATIONS & DETAILS
A902	DETAILS
M210	FIRST FLOOR HVAC PLAN
M220	SECOND FLOOR HVAC PLAN

VICINITY MAP



LICENSE STAMPS



PROJECT NAME
MEDICAL SHOWER
ADA UPGRADES
FOR
HUMBOLDT
COUNTY
JAIL

901 5TH STREET
EUREKA, CALIFORNIA

SHEET TITLE

COVER SHEET

DRAWING STATUS
CONSTRUCTION
DOCUMENTS

REVISIONS

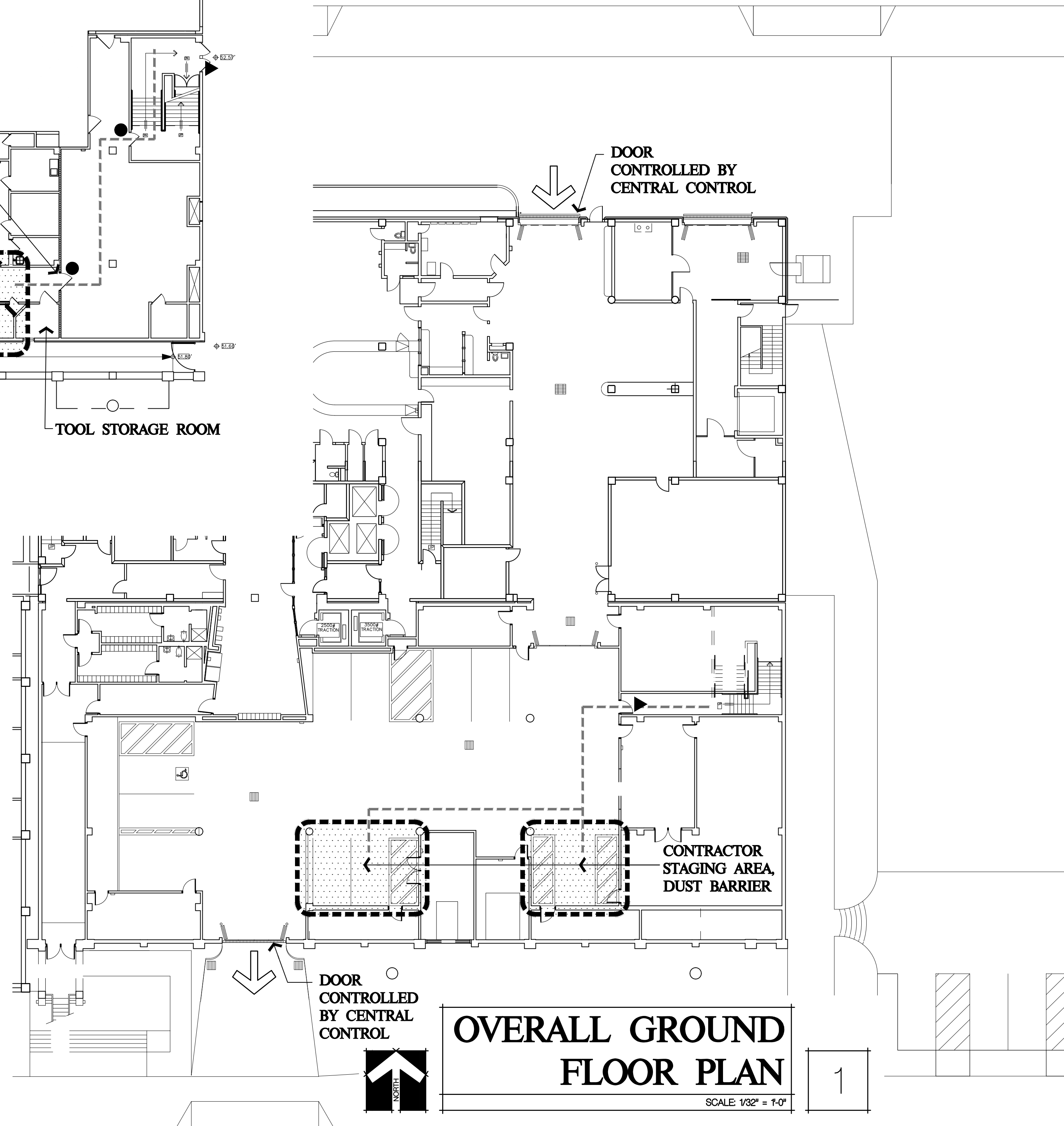
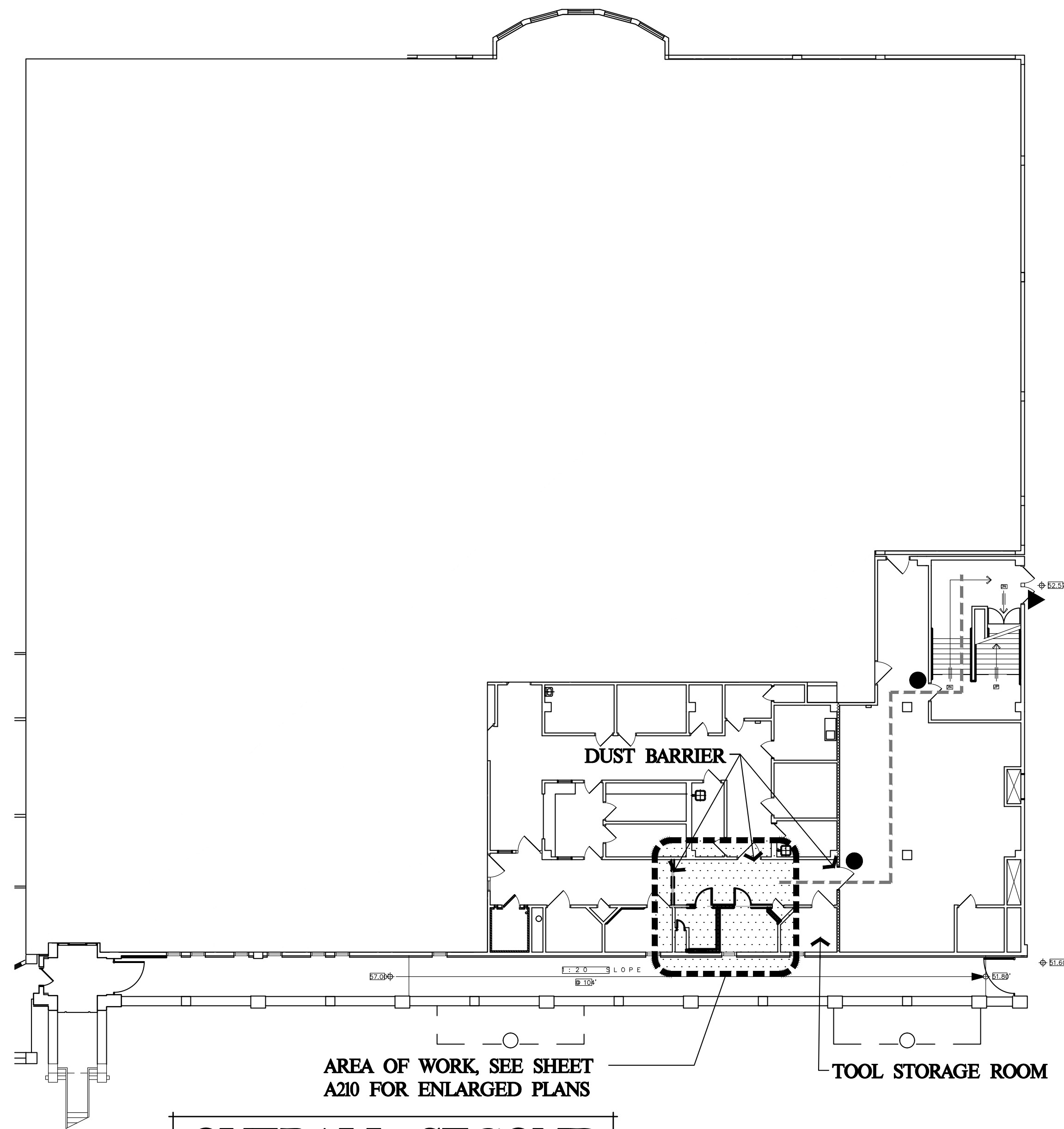
Sym.	Description	By	Date

Drawn By	AMP
Checked By	DRC
Date Drawn	10-04-2018
Scale	AS NOTED
Job No.	17-6430

SHEET No.

G001

Logn Name: Devin C
 Plot Date: October 04, 2018 - 6:50 pm
 File Name: \\p010010000\cadd\2017-2018\ Humboldt County ADA Compliance\03 Medical Shower\Drawings\CS-SHOWER-Shighway.dwg
 PEP: ZL Ground Level - Facility Clearance - FCS-SHOWERS - FCS-SHOWERS-1-FLOOR PLAN



FACILITY CLEARANCE & CONTRACTOR ACCESS PROTOCOL

1. PRIOR TO FACILITY ACCESS, CONTRACTOR AND ALL SUB-CONTRACTORS AND EMPLOYEES WHO MAY BE WORKING INSIDE SHALL SUBMIT A "FACILITY CLEARANCE APPLICATION FORM" AVAILABLE FOR PICK-UP AT THE SECOND FLOOR FACILITY ADMINISTRATION RECEPTION AREA, LOCATED ON THE 5TH STREET SIDE OF THE FACILITY. THE CORRECTIONAL FACILITY WILL REVIEW THE APPLICATIONS AND CREATE A PRE-APPROVED CONTRACTOR LIST THAT WILL BE LOCATED AT THE PRE-PROCESSING CONTRACTOR CHECK-IN. CONTRACTOR MAY OBTAIN A COPY OF THE PRE-APPROVED LIST FROM ADMINISTRATION.
2. THE MAIN CONTRACTOR ACCESS SHALL BE THROUGH THE DOUBLE DOORS LOCATED IN STAIRWELL, WHICH OPENS TO THE DIRT PARKING LOT SIDE OF THE CORRECTIONAL FACILITY, AND PROCEED DOWN TO THE SALLY-PORT. SECONDARY CONTRACTOR ACCESS SHALL BE THROUGH THE 4TH STREET BI-FOLD DOORS ONLY TO BRING TOOLS OR EQUIPMENT INSIDE THE SALLY-PORT.
3. ONCE INSIDE THE SALLY-PORT, CONTRACTOR TO ENTER THE FACILITY THROUGH THE DOUBLE DOOR VESTIBULE NEXT TO PRE-BOOKING.
4. CONTRACTOR WILL MEET WITH THE DUTY SHIFT SUPERVISOR IN PROCESSING AND PRESENT THEIR PERSONAL IDENTIFICATION EITHER A CALIFORNIA DRIVERS LICENSE OR PASSPORT AND INFORM THE SHIFT SUPERVISOR OF THEIR WORK ASSIGNMENT AND LOCATION WITHIN THE FACILITY.
5. THE SHIFT SUPERVISOR WILL CHECK THE PRE-APPROVED CONTRACTOR LIST AND ASSIGN ALL CONTRACTORS "CLIP-ON VISITOR PASSES" WHICH SHALL BE VISIBLY WORN BY ALL CONTRACTORS AND EMPLOYEES WHILE INSIDE THE FACILITY, FOR SAFETY AND SECURITY.
6. THE SHIFT SUPERVISOR WILL INFORM AND ADVISE CENTRAL CONTROL AND THE LOAS OFFICE OF THE LOCATION OF WORK. IN THE EVENT OF AN EMERGENCY, ALL FACILITY GUIDELINES AND EVACUATIONS SHALL BE FOLLOWED PER CORRECTIONAL FACILITY POLICIES AND PROCEDURES.
7. CONTRACTOR WILL MEET WITH A WORK CREW LEADER OR CORRECTIONAL OFFICER WHO WILL ESCORT THEM TO THEIR APPROPRIATE WORK LOCATION. ALL TOOLS AND EQUIPMENT SHALL BE IDENTIFIED AND INVENTORIED FOR SAFETY AND SECURITY.
8. UPON COMPLETION OF WORK SHIFT, CONTRACTORS AND ALL TOOLS AND EQUIPMENT SHALL BE ACCOUNTED FOR. ALL TOOLS SHALL BE REMOVED FROM THE FACILITY OR PLACED IN A DESIGNATED SECURE LOCATION. THE SECURE LOCATION WILL BE DESIGNATED BY THE SHIFT SUPERVISOR OR SECURITY ESCORT.
9. CONTRACTORS SHALL EXIT THROUGH PROCESSING AND MUST CHECK OUT WITH THE SHIFT SUPERVISOR.
10. CONTRACTOR SHALL SHOW PERSONAL IDENTIFICATION, AND ONCE VERIFIED BY SHIFT SUPERVISOR, MAY EXIT THE CORRECTIONAL FACILITY THROUGH THE SALLY-PORT.

CONTRACTOR WORK ACCESS SHIFTS

CONTRACTOR WORK SHIFTS MONDAY THROUGH SUNDAY:

ACCESS FROM:
7:00PM TO 9:00PM

FACILITY LOCKDOWN FROM:
9:00PM TO 7:00AM

CONTRACTOR WORK REQUIREMENTS

1. WORK THAT PRODUCES EXCESSIVE NOISE LEVELS SHALL BE SCHEDULED TO BE PERFORMED ON WEEKENDS TO MINIMIZE INTERRUPTIONS FOR JAIL STAFF.
2. COORDINATE CONCRETE POURS WITH JAIL STAFF TO BE PERFORMED OUTSIDE OF NORMAL OPERATION HOURS, ALLOWING FOR MINIMAL SHUT-DOWN OF THE INTAKE AREA.
3. CONTRACTOR TRAFFIC BETWEEN THE STAGING AREA AND THE AREA OF REMODEL SHALL BE MINIMIZED IN AN EFFORT TO ALLOW THE INTAKE AREA TO OPERATE NORMALLY DURING THE ENTIRE PERIOD OF THE CONSTRUCTION.

LEGEND

- ▶ DOOR CONTROLLED BY CENTRAL CONTROL
- DOOR CONTROLLED BY KEY ISSUED TO CONTRACTOR FROM OWNER
- ACCESS PATH FOR CONTRACTOR

Copyright © 2018

All ideas, designs, arrangements and plans indicated or represented by this drawing are created by, and the property of, MELBURG, MELBURG and ROSSETTO, and were created, analyzed and developed for use on, and in conjunction with, the specified project. None of such ideas, designs, arrangements or plans shall be used by, or disclosed to any person, firm or corporation for any purpose whatsoever without the written permission of MELBURG, MELBURG and ROSSETTO.

**NICHOLS
MELBURG
ROSSETTO**
ARCHITECTS + ENGINEERS

300 KNOLLCREST DRIVE
REDDING, CA 96002
(530) 222-3300 (530) 222-3538 FAX
<http://www.nmrdesign.com>

CONSULTANTS

LICENSE STAMPS



PROJECT NAME

**MEDICAL SHOWER
ADA UPGRADES
FOR
HUMBOLDT
COUNTY
JAIL**

**901 5TH STREET
EUREKA, CALIFORNIA**

**SHEET TITLE
OVERALL FLOOR PLAN
& ACCESS/ WORK
PROTOCOLS**

**DRAWING STATUS
CONSTRUCTION
DOCUMENTS**

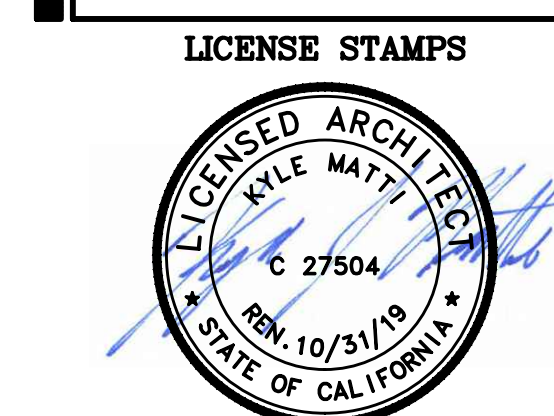
REVISIONS

Sym.	Description	By	Date

Drawn By	AMP
Checked By	DRC
Date Drawn	10-04-2018
Scale	AS NOTED
Job No.	17-6430

SHEET No.

A200



PROJECT NAME
**MEDICAL SHOWER
 ADA UPGRADES
 FOR
 HUMBOLDT
 COUNTY
 JAIL**

**901 5TH STREET
 EUREKA, CALIFORNIA**

SHEET TITLE
**DEMO & NEW
 FLOOR & REFLECTED
 CEILING PLANS**

DRAWING STATUS
**CONSTRUCTION
 DOCUMENTS**

REVISIONS

Sym.	Description	By	Date

Drawn By	AMP
Checked By	DRC
Date Drawn	10-04-2018
Scale	AS NOTED
Job No.	17-6430

SHEET No.

A210

FLOOR PLAN SHEET NOTES

- ALL ITEMS ARE NEW, UNLESS NOTED AS (E) OR EXISTING
- 6" FULL HEIGHT CMU WALL. PROVIDE REINFORCING PER DETAIL 1/A901. PROVIDE STEEL EMBEDMENT AT (E) FLOOR AND END OF WALL PER DETAIL 1/A901. AVOID (E) REINFORCING.
 - 16" x 36" ACCESS DOOR
 - WALL MOUNTED DETENTION MIRROR
 - ACCESSIBLE COMBINATION TOILET-LAVATORY UNIT WITH GRAB BAR AND CLOSURE STRIP. INCLUDE CLOSURE PANEL BETWEEN WALL AND COMBINATION UNIT. SEE DETAIL 10/A901.
 - 48" SECURITY GRAB BAR - SEE DETAIL 7/A901
 - FLOOR DRAIN & GRATE, PROVIDE SECURITY/TAMPER RESISTANT FASTENERS
 - (E) WINDOW FRAME TO REMAIN. PREP, PRIME & PAINT
 - SECURITY BUNK - SEE DETAIL 2/A902
 - NEW 3'-0" x 7'-0" DOOR - SEE DETAIL 6/A901
 - SECURITY TOWEL HOOK
 - PROVIDE NEW SURFACE MOUNTED LED MAXIMUM SECURITY SHOWER LIGHT. KENALL #SOC-A-0-7-2SL40K-DCC-1MWOLT-9/1-1 AND CONNECT TO EXISTING LIGHTING CIRCUIT
 - NOT USED
 - NOT USED
 - RESINOUS SURFACING AT FLOOR AND 8" HIGH BASE
 - 8" CONCRETE SLAB, TYP - SEE DETAIL 1/A901 & 1/A902
 - SLOPE SHOWER FLOOR TO DRAIN 2% MAX IN ANY DIRECTION
 - SUSPENDED CEMENT PLASTER SECURITY CEILING WITH SECURITY METAL LATH
 - NEW INTERCOM DETENTION GRADE EMERGENCY PUSH BUTTON WITH STAINLESS STEEL FACE PLATE. INSTALLED WITH SECURITY FASTENERS. CONNECT TO EXISTING INTERCOM WIRING
 - NEW HVAC SUPPLY GRILLE ATTACHED TO (E) DUCT. MATCH SIZE OF DEMOLISHED GRILLE
 - 24" WIDE SECURITY METAL PLANK CEILING - SEE DETAIL 3/A902
 - RESINOUS SURFACING OF SUSPENDED CEMENT PLASTER SECURITY CEILING WITH SECURITY METAL LATH
 - SECURITY EXHAUST GRILLE, ROUTE DUCT IN FLOOR SPACE ABOVE CEILING AND OUT TO SOUTH EXTERIOR WALL AS SHOWN
 - INSTALL NEW ILLUMINATED LIGHT SWITCH WITH CONDUIT AND WIRE TO NEW LIGHT FIXTURE. MOUNT BETWEEN 15" MIN AFF TO BOTTOM OF BOX TO 48" MAX AFF TO TOP OF BOX FOR A FORWARD APPROACH
 - 1 x 4; SURFACE MOUNTED, 3 LAMP MAXIMUM SECURITY FLUORESCENT FIXTURE WITH NIGHT LIGHT
 MANUFACTURER: FAILSAFE #FUSLS12332120 80/94
 EB81NL-SF3-VFSD 120V
 LAMPS: 3-F32T8 SP25 1LED NL
 CONNECT TO EXISTING CIRCUIT
 - REINSTALL EXISTING FIRE ALARM SMOKE DETECTOR AND SECURITY COVER IN NEW CEILING. RECONNECT TO EXISTING FIRE ALARM WIRING.
 - SEMI RECESSED ANTI-LIGATURE TOILET PAPER HOLDER
 - RECESSED, ADA FOLDING SHOWER SEAT
 - CUSTOM STAINLESS STEEL CLOSURE PANEL, FLUSH WITH LAV.
 - 30" X 30" 1-HR FIRE RATED DETENTION CEILING ACCESS MATCH JAIL KEYING

ELECTRICAL NOTES

- ALL CONDUIT SHALL BE GALVANIZED RIGID STEEL, ANSI C801, UL6 WITH THREADED RIGID STEEL CONDUIT COUPLINGS.
- ELECTRICAL OUTLET BOXES SHALL BE CONCRETE MASONRY TYPE WHERE INSTALLED IN CMU WALLS. SURFACE BOXES SHALL BE UL 514A, TYPE FD, CAST TYPE WITH SECURITY COVERS AND FASTENERS.
- GROUND ALL METALLIC CONDUIT SYSTEMS, CABINETS, EQUIPMENT AND LIGHTING FIXTURES IN ACCORDANCE WITH NEC ARTICLE 250.86
- FIRE SEAL ALL CONDUIT PENETRATION THROUGH FIRE RATED ASSEMBLIES. FOR ONE HOUR CMU WALLS PROVIDE UL SYSTEM C-AJ-1013 PENETRATION ASSEMBLY.

GENERAL NOTES

- WATER MUST REMAIN ON FOR A MINIMUM OF 10 SECONDS AT LAVATORY
- OPERABLE FIXTURES AT LAVATORY, SHOWER, AND WATER CLOSET ARE A MAXIMUM 5 LBS. OPERATIONAL FORCE
- ALL PENETRATIONS THROUGH RATED WALLS SHALL BE PROPERLY PROTECTED.
- PROVIDE SHORING DESIGN BY LICENSED ENGINEER INSTALLED BY CONTRACTOR.

LEGEND

- ALL ITEMS ARE NEW, UNLESS NOTED AS (E) OR EXISTING
- CMU WALL
 - 1 HOUR RATED CMU WALL
 - (E) CMU WALL
 - (E) 1 HOUR RATED CMU WALL
 - (E) 2 HOUR RATED WALL

DEMOLITION SHEET NOTES

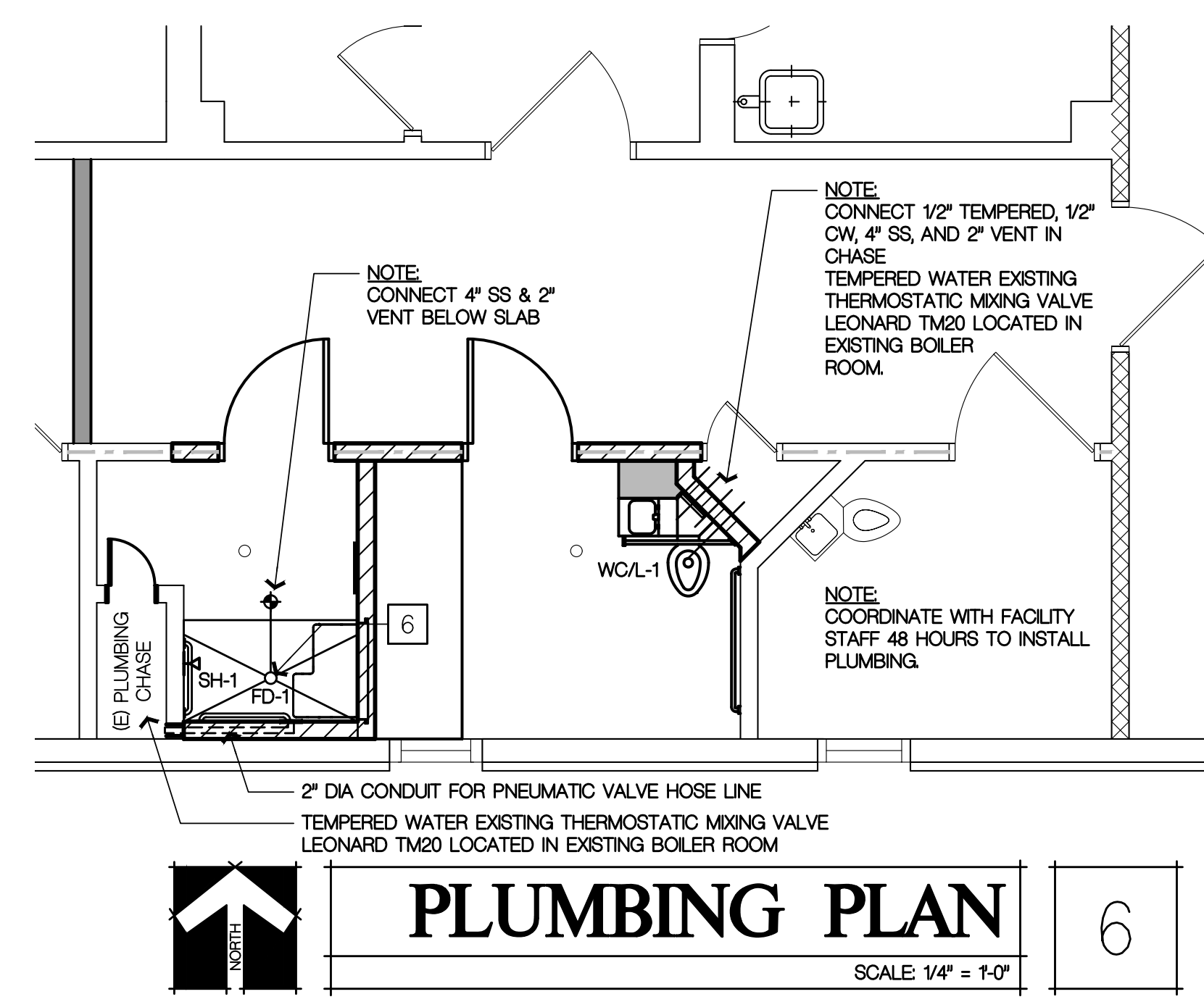
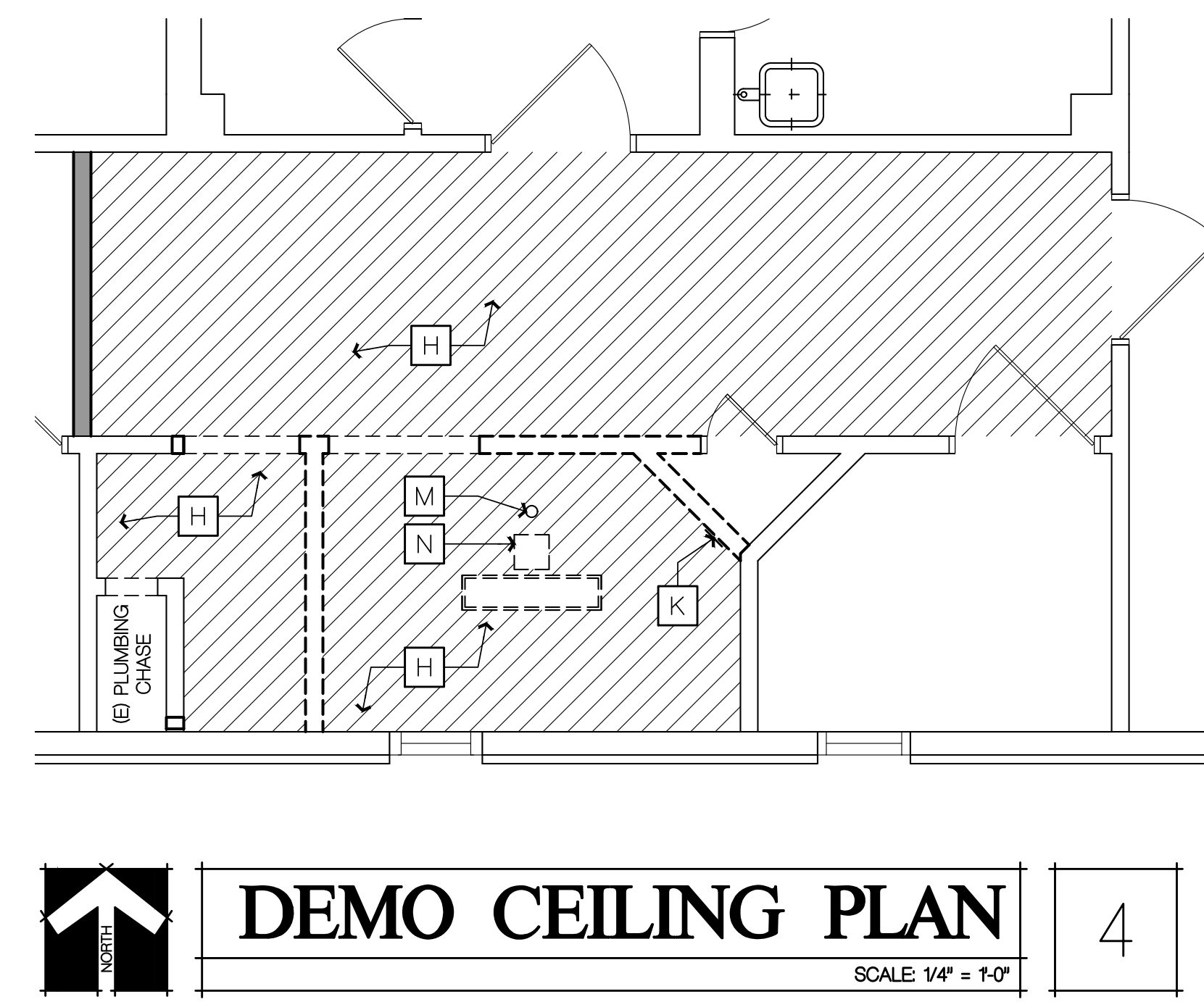
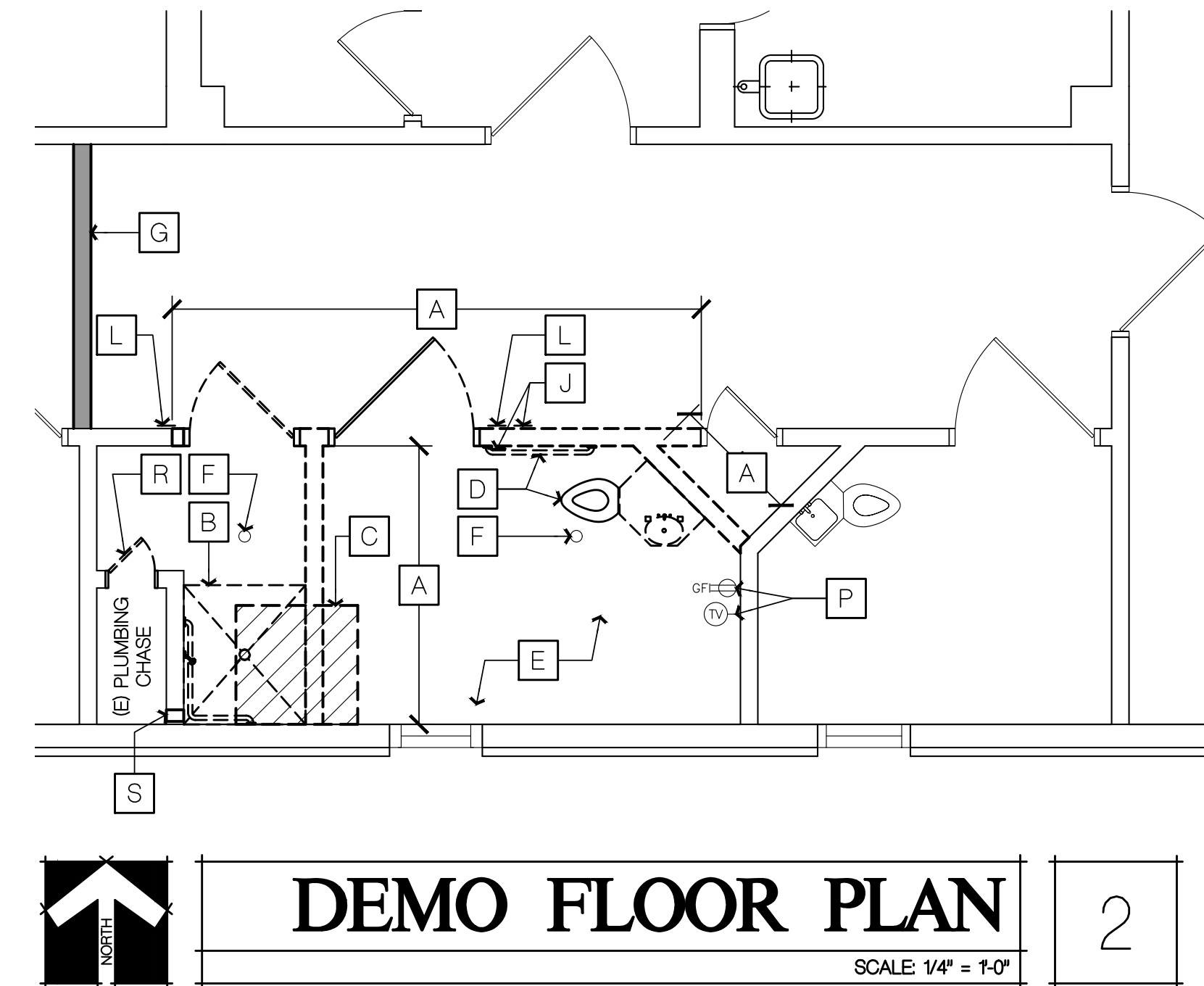
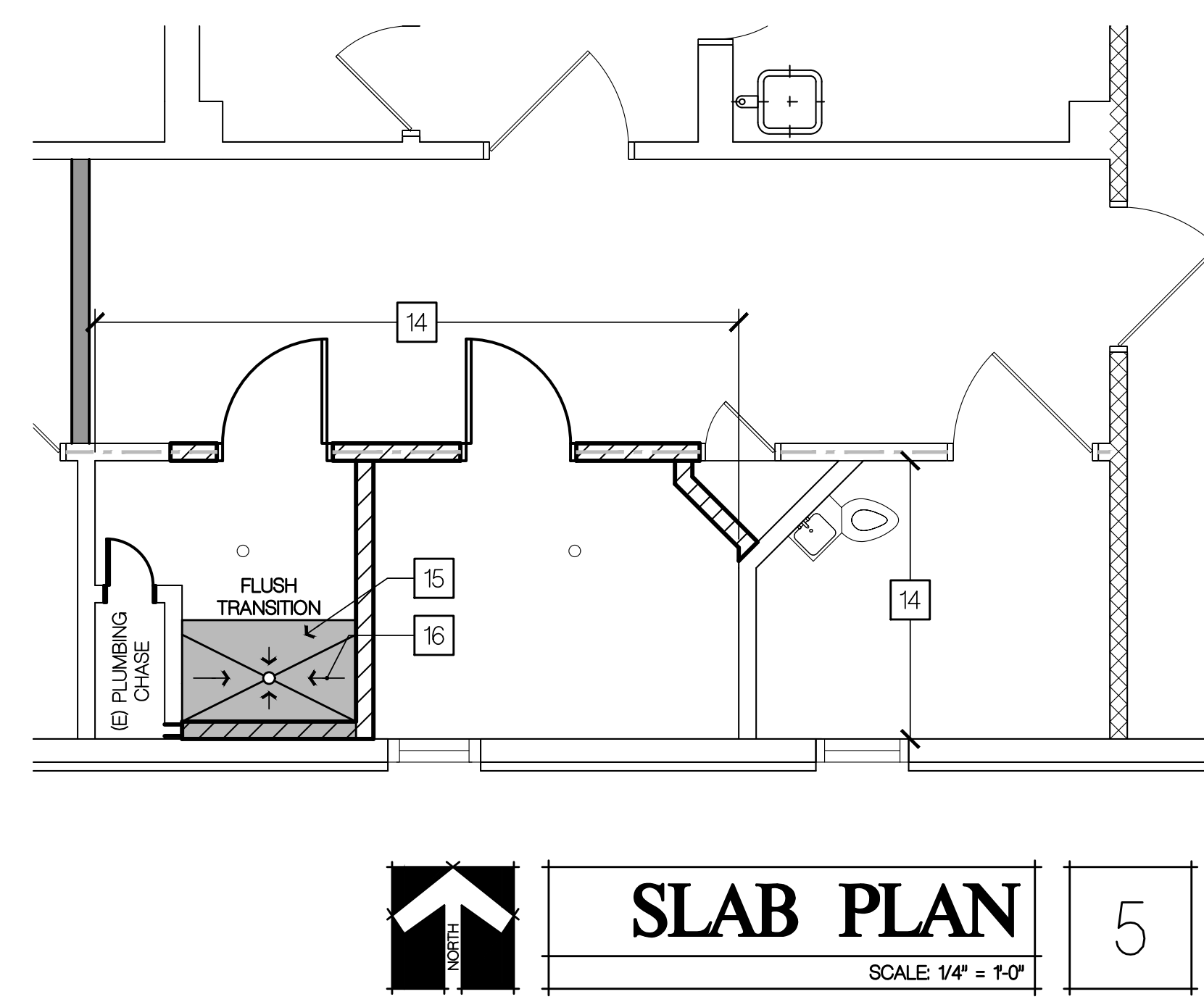
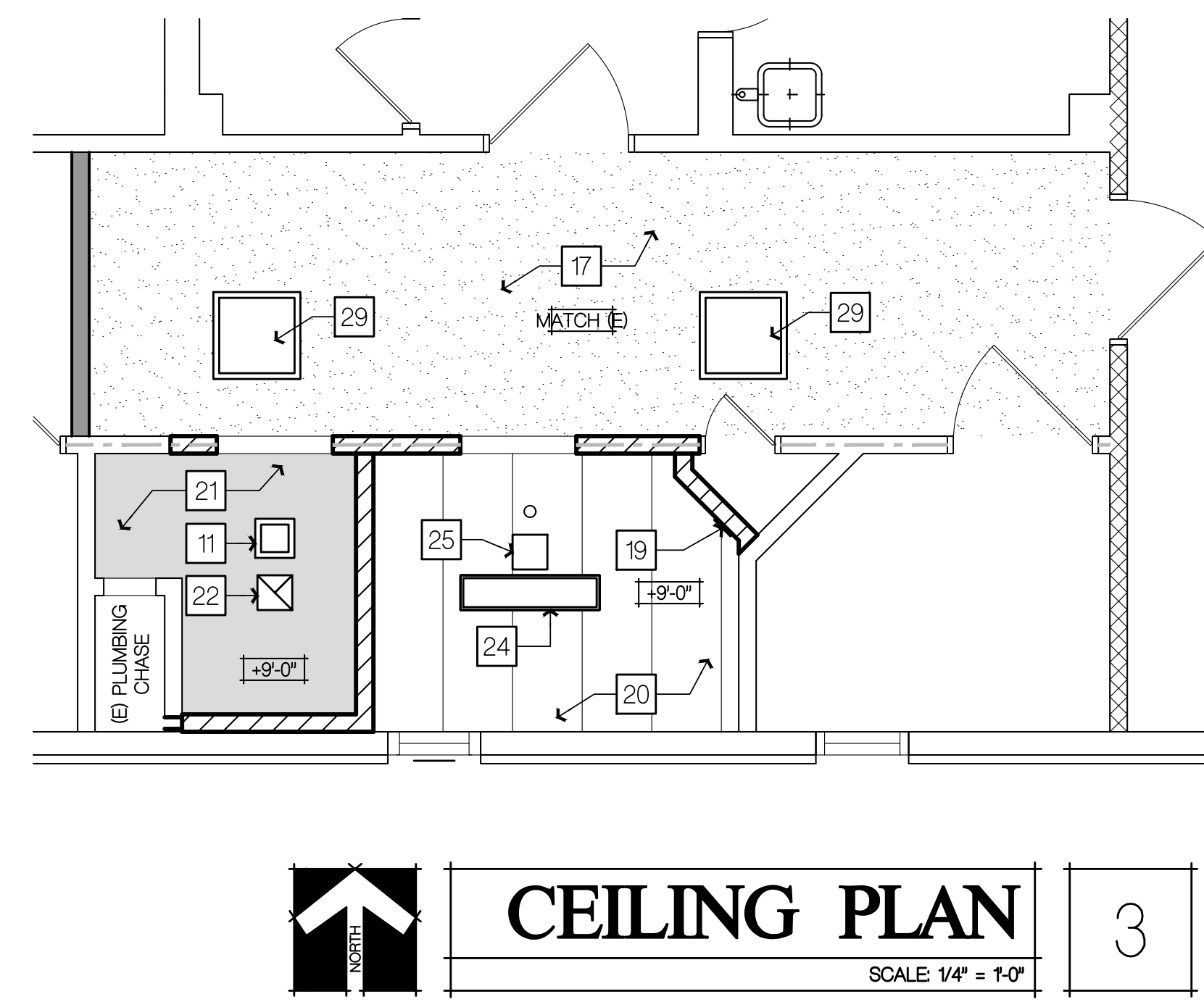
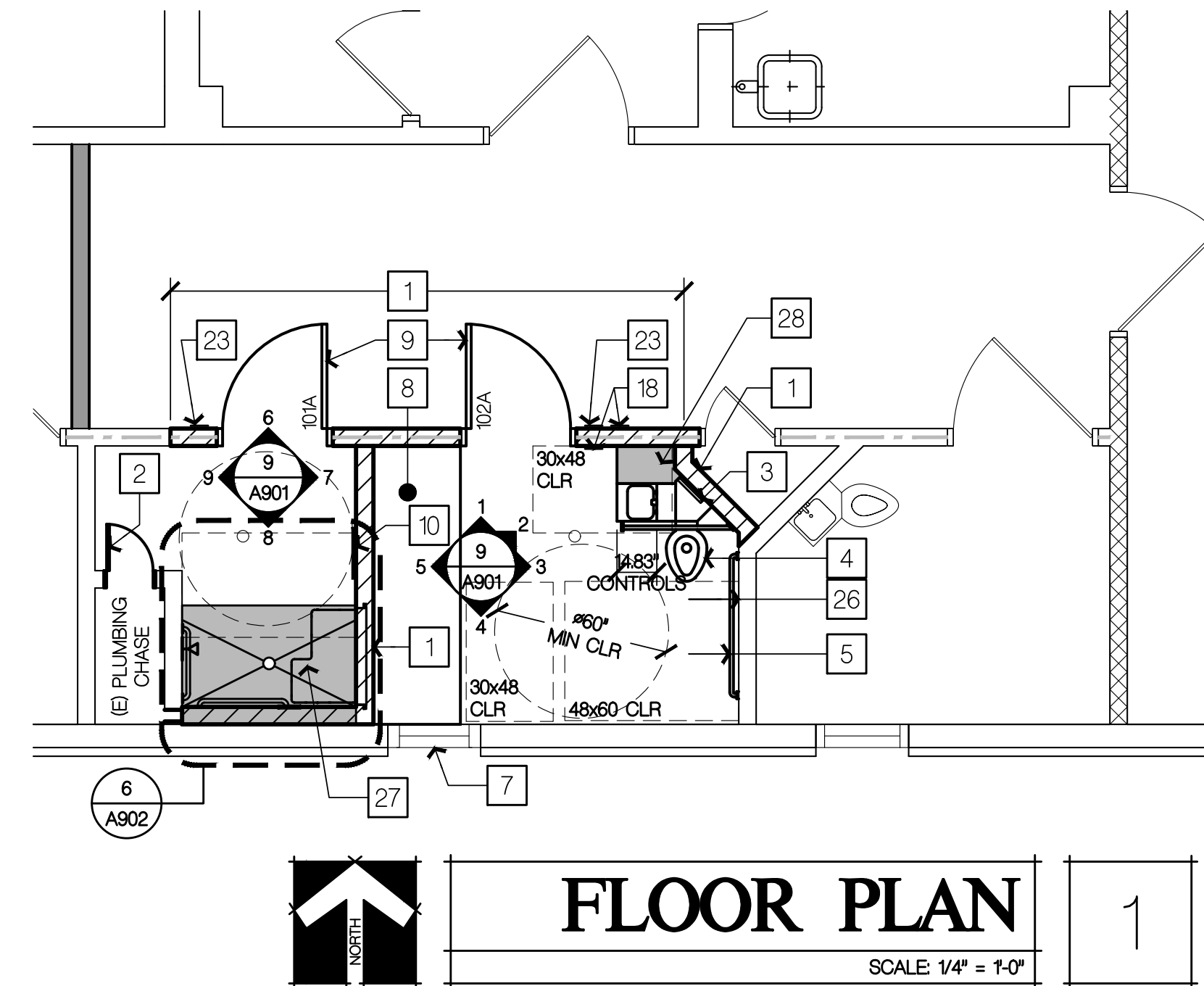
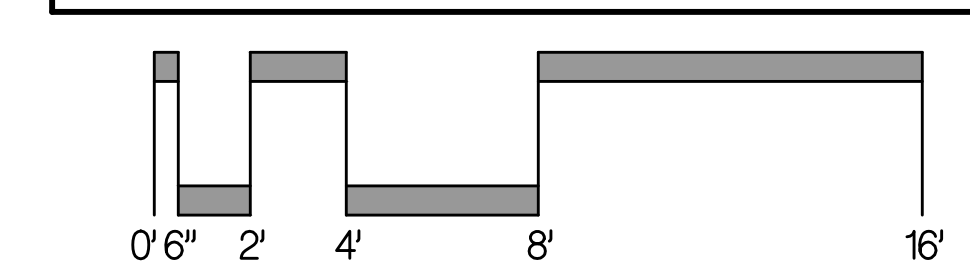
- ALL ITEMS ARE EXISTING, UNLESS NOTED AS NEW
- A** REMOVE CMU WALL COMPLETELY
 - B** REMOVE SHOWER INSERT COMPLETELY
 - C** SAWCUT AND REMOVE 8" CONCRETE SLAB
 - D** REMOVE COMBI UNIT & HANDRAIL COMPLETELY
 - E** REMOVE VINYL FLOORING & COVE BASE, PREP FLOOR FOR RESINOUS SURFACING
 - F** ADJUST FLOOR DRAIN TO PROVIDE A SMOOTH TRANSITION AT NEW FLOORING. VERIFY FLOOR DRAIN IS SECURED WITH SECURITY/TAMPER RESISTANT FASTENERS
 - G** INSTALL FULL HEIGHT 2X6 TEMPORARY WALL WITH 1/8" PLYWOOD ON SECURE SIDE, USE SECURITY FASTENERS
 - H** SAW CUT AND REMOVE SUSPENDED PLASTER CEILING AND ALL CEILING MOUNTED FIXTURES COMPLETELY AS SHOWN
 - J** REMOVE EXISTING PAGING DEVICE AND OUTLET BOX. INTERCEPT EXISTING WIRE FOR REUSE
 - K** REMOVE HVAC GRILLE AND SHORTEN LENGTH OF DUCT FOR NEW GRILLE LOCATION
 - L** REMOVE ILLUMINATED LIGHT SWITCH, OUTLET BOX, CONDUIT AND WIRE BACK TO LIGHTING FIXTURE
 - M** FIRE SPRINKLER HEAD, PROTECT FROM DEMO AND FOR INSTALLATION OF NEW CEILING
 - N** REMOVE EXISTING FIRE ALARM SMOKE DETECTOR AND SECURITY COVER. SAVE FOR REINSTALLATION
 - P** DISCONNECT AND REMOVE EXISTING TV AND RECEPTACLE DEVICES. REMOVE WIRE AND CABLE BACK TO LAST REMAINING OUTLETS. INSTALL BLANK SECURITY COVER PLATES ON EXISTING BOXES
 - R** REMOVE (E) ACCESS DOOR
 - S** CORE DRILL HOLE IN CMU WALL FOR NEW CONDUIT

DOOR HARDWARE

DOORS 101A & 102A - RATING 45 MIN		
1-1/2" PAIR HINGES	AIRTEQ 640 FMC	US32D
1 EA LOCKSET	METCO - MATCH EXISTING KEYING	US32D
1 EA RAISED PULL	AIRTEQ 612	US32D
1 EA FLUSH PULL	AIRTEQ 614	US32D
1 EA FLOOR STOP	AIRTEQ 650	-
1 EA KICKPLATE	TRIMCO K0050 x 16" H	630
DOOR 102A ONLY:		
1 EA FOOD PASS	SOUTHERN STEEL	262
GLAZING 45 MIN	FIRE RATED GLASS	-

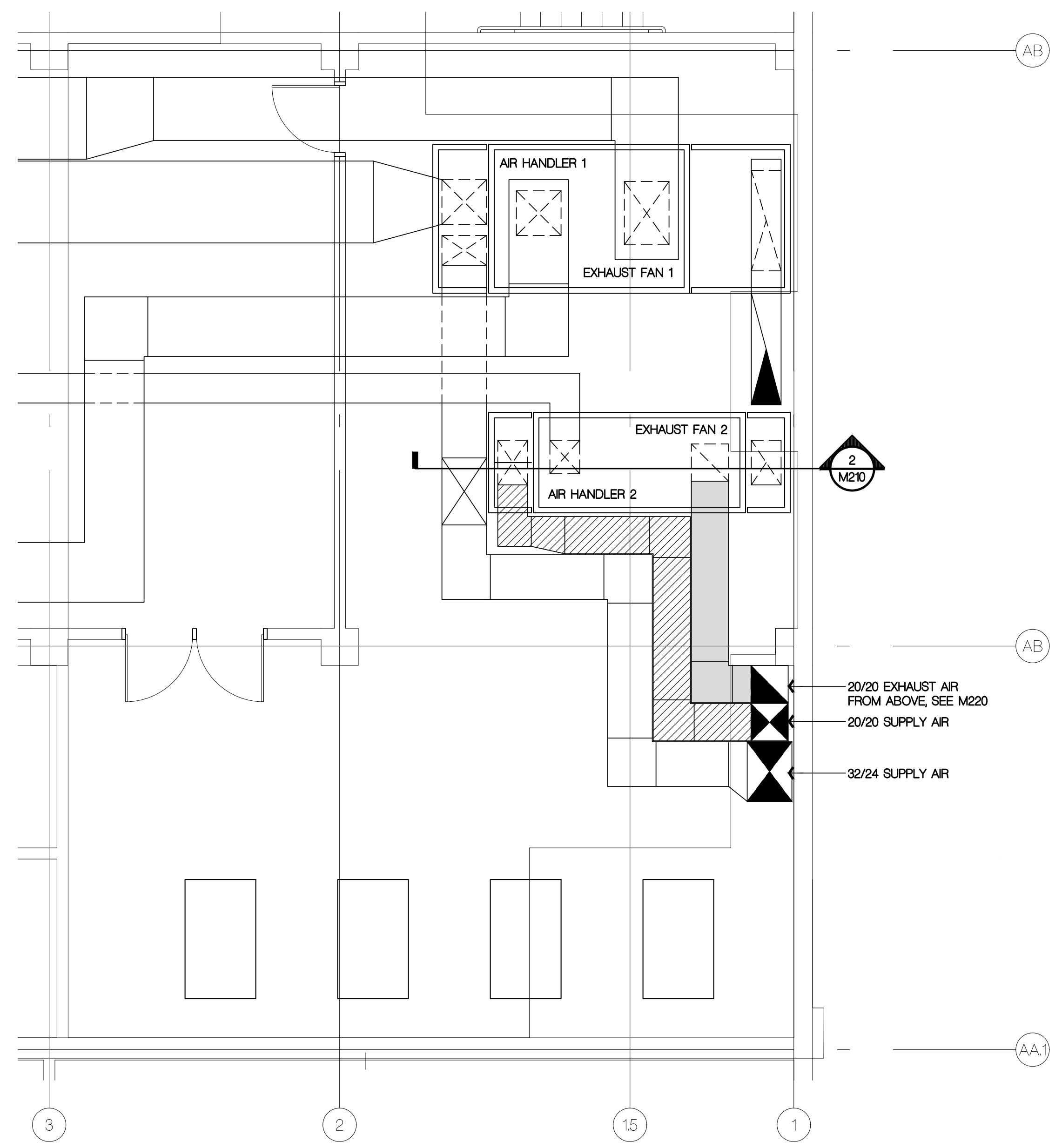
PLUMBING SCHEDULE

SYMBOL	FIXTURE	FIXTURE MANUFACTURER AND MODEL NUMBER
WCL-1	WATER CLOSET/LAVATORY FLUSH VALVE COMBINATION	"METOCRAFT" MODEL 3155-R, ON THE FLOOR, WALL, OUTLET, SUICIDE RESISTANT BUBBLER/ FILLER, RECTANGULAR BASIN, STAINLESS STEEL CLOSURE PANEL, COMBINED WASTE, HYDRAULIC ANTI-FLOOD VALVE, MIRROR FINISH TOILET SEAT, LIGATURE RESISTANT SKIRT, VENT GRILLE, SECURITY FRAME, 2-3/8" s/s TO 3" CI NO-HUB CONNECTOR, 3" NO-HUB TEST TEE, PINNED CLEAN-OUT PLUG 4", 48" WALL GRAB BAR WITH CLOSURE PLATE, 36" FIXTURE GRAB BAR WITH CLOSURE PLATE, DUAL TEMPERATURE, MANIFOLD VALVE, 25 GALLON PER MINUTE FLOW, REMOTELY CONTROLLED
FD-1	FLOOR DRAIN	"ZURN" MODEL Z550, 4" PIPE, D.C.C.I BODY WITH POLISHED NICKEL BRONZE TOP, DURESSIT GRATE, GALVANIZED CAST IRON VANDAL-PROOF SECURE TOP, SEDIMENT BUCKET, TRAP PRIMER
SH-1	SHOWER SURFACE MOUNTED	"METOCRAFT" 8125, SHOWER HEAD 300g, DELUXE ADA SPRAY HEAD, NO SOAP DISH OPTION, SINGLE TEMPERATURE, MANIFOLD VALVE, 25 GALLON PER MINUTE FLOW, REMOTELY CONTROLLED



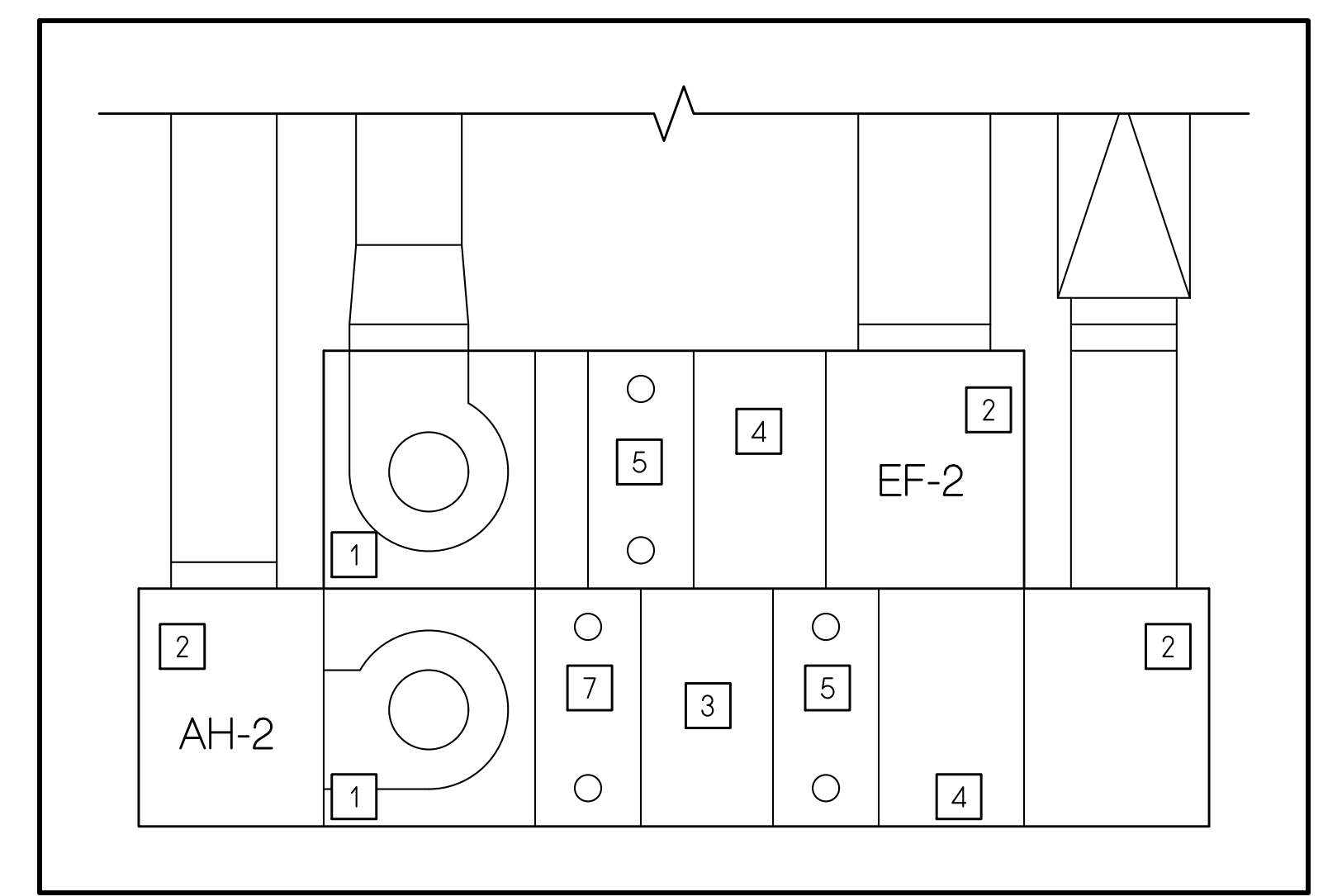
Logix Name: Devin C
 Plot Date: October 04, 2018 - 6:59 pm
 File Name: \\p1000000000\cadd\2017\10-04\Humboldt County ADA Compliance\03 Medical Shower\Drawing\1-CU-SHOWER.rvt
 Plot Name: \\p1000000000\cadd\2017\10-04\Humboldt County ADA Compliance\03 Medical Shower\Drawing\1-CU-SHOWER.rvt
 PLOTTER: HP-DesignJet 5000DN
 PLOTTER: HP-DesignJet 5000DN

Logix Name: Devin C
 Pct Date: October 04, 2018 - 6:50 pm
 File Name: A:\Projects\03000\Civil\0301\17-6438 Humboldt County ADA Compliance\03 Medical Shower\Drawing\C-Mech\plan1.dwg
 PERS: V:\CADD\DWG\17-6438.dwg



FIRST FLOOR MECHANICAL PLAN
 SCALE: 1/4" = 1'-0"
 1

KEYED NOTES	
1	FAN SECTION
2	PLENUM SECTION, LINED
3	ACCESS SECTION
4	FILTER SECTION
5	HEAT RECOVERY COIL
6	HEATING COIL
7	COOLING COIL



MECHANICAL ROOM SECTION
 SCALE: 1/2" = 1'-0"
 2

EXISTING EF-2 ORIGINAL DESIGN DATA

FAN SECTION	
2900	MAXIMUM AIR CAPACITY - CFM
15	TOTAL STATIC PRESSURE - H2O
3023	OUTLET VELOCITY - FPM
990	FAN SPEED - RPM
3279	TIP SPEED - FPM
2	MINIMUM MOTOR - HP
89.5	MINIMUM MOTOR EFFICIENCY
YES	INLET VANE DAMPERS
13' FC	FAN WHEEL TYPE
YES	INTERNALLY ISOLATED - OPEN SPRINGS
HEAT RECOVERY COIL	
YES	COIL TO FIT UNIT
6.7	MINIMUM COIL AREA - SQ. FT.
714	CAPACITY - MBH
10%	GLYCOL SOLUTION - %
35	GLYCOL SOLUTION - GPM
49.1	LEAVING GLYCOL TEMPERATURE - F.
44.9	ENTERING GLYCOL TEMPERATURE - F.
17	GLYCOL PRESSURE LOSS - FT. H2O
70	ENTERING AIR TEMPERATURE - F.
49.5	LEAVING AIR TEMPERATURE - F.
0.73	AIR PRESSURE DROP - H2O
AH/2	MATCH MARK NO. CAPACITY
6R/14F	MINIMUM ROWS/FINS PER INCH
P/8	SERVED BY PUMP
COOLING COIL	
YES	2" DISPOSABLE FILTERS
72	FILTER AREA - SQ. FT.
777	DESIGN WEIGHT
07	CARRIER UHFLX33" CASE SIZE

EXISTING AH-2 ORIGINAL DESIGN DATA

SUPPLY FAN SECTION	
3900	MAXIMUM AIR CAPACITY - CFM
100	MINIMUM OUTSIDE AIR - %
4	TOTAL STATIC PRESSURE - H2O
2500	OUTLET VELOCITY - FPM
3577	FAN SPEED - RPM
1484	TIP SPEED - FPM
5	MINIMUM MOTOR - HP
89.5	MINIMUM MOTOR EFFICIENCY - %
YES	INLET VANE DAMPERS
14' AF	FAN WHEEL TYPE
YES	INTERNALLY ISOLATED - OPEN SPRINGS
HEAT RECOVERY COIL	
YES	COIL TO FIT UNIT
8.9	MINIMUM COIL AREA - SQ. FT.
714	CAPACITY - MBH
10%	GLYCOL SOLUTION - %
35	GLYCOL SOLUTION - GPM
49.1	ENTERING GLYCOL TEMPERATURE - F.
44.9	LEAVING GLYCOL TEMPERATURE - F.
0.9	GLYCOL PRESSURE LOSS - FT. H2O
30	ENTERING AIR TEMPERATURE - F.
46.8	LEAVING AIR TEMPERATURE - F.
0.8	AIR PRESSURE DROP - H2O
EF/2	MATCH MARK NO. CAPACITY
8R/14F	MINIMUM ROWS/FINS PER INCH
P/8	SERVED BY PUMP
COOLING COIL	
YES	COIL TO FIT UNIT
CH WATER	TYPE
438	MINIMUM AREA - SQ. FT.
127/15	FACE VELOCITY - FPM
82/646	COOLING CAPACITY - MBH TOTAL/SENSIBLE
55.1/536	ENTERING AIR - F. db/F. wb
0.55	LEAVING AIR - F. db/F. wb
25.4	AIR PRESSURE DROP - H2O
45	CHILLED WATER - GPM
55	ENTERING CHILLED WATER - F.
114	LEAVING CHILLED WATER - F.
6R/8F	CHILLED WATER PRESSURE LOSS - FT. H2O
YES	MINIMUM ROWS/FINS PER INCH

EXISTING CVV BOX ORIGINAL DESIGN DATA

MARK NO.	CVV/1	CVV/1	CVV/1
TYPE	RE-HEAT	RE-HEAT	RE-HEAT
SYSTEM	ISOL 280	ANTERM 281	ISOL 282
INFECTIOUS MODE AIR CAPACITY	375	250	375
AIR INLET DIAMETER - INCHES	10"	10"	10"
MINIMUM STATIC PRESSURE - H2O	0.333	0.344	0.273
FINNED LENGTH x HEIGHT - INCHES	12"x12"	12"x12"	12"x12"
CAPACITY - MBH	22.1	22.1	22.1
ENTERING AIR - F.	418	418	418
LEAVING AIR - F.	90	90	90
HEATING WATER - GPM	11	11	11
ENTERING HEATING WATER - F.	180	180	180
HW PRESSURE LOSS - FT. H2O	0.21	0.29	0.19
2" DISPOSABLE PRE-FILTER - 24" x 12"	YES	YES	YES
HEPA FILTER SIZE - 24" x 12" x 12"	YES	YES	YES
HEPA FILTER EFFICIENCY - %	99.99%	99.99%	99.99%
DESIGN WEIGHT - LB.	57	42	57
COIL BRANCH PIPE SIZES - INCHES	3/4"	3/4"	3/4"

EXISTING VAV BOX ORIGINAL DESIGN DATA

MARK NO.	VAV/15	VAV/16	VAV/17	VAV/18	VAV/19	VAV/20	VAV/21
TYPE	RE-HEAT	RE-HEAT	RE-HEAT	RE-HEAT	RE-HEAT	RE-HEAT	RE-HEAT
SYSTEM	CELL	EXAM	EXAM	DENTAL	ADM	CELLS	CELLS
MAXIMUM AIR CAPACITY - CFM	284	267	268	167	272	274-279	290
HEATING AIR VOLUME - CFM	400	400	250	600	300	1025	365
AIR INLET DIAMETER - INCHES	200	200	100	200	100	500	150
MINIMUM STATIC PRESSURE - H2O	7"	7"	7"	5"	6"	10"	6"
RE-HEAT COIL CAPACITY - MBH	0.16	0.16	0.15	0.16	0.16	0.345	0.25
ENTERING AIR - F.	9.1	9.1	5.6	9.1	5.6	210	6.4
LEAVING AIR - F.	42.4	42.4	44.2	44.2	44.2	44.2	44.2
HEATING WATER - GPM	84.5	84.5	97.7	84.5	56.1	83.1	90
ENTERING HEATING WATER - F.	0.5	0.5	0.5	0.5	0.5	2	0.5
HW PRESSURE LOSS - FT. H2O	180	180	180	180	180	180	180
DESIGN WEIGHT - LB.	0.24	0.24	0.17	0.24	0.17	0.17	112
COIL BRANCH PIPE SIZES - INCHES	65	65	50	65	50	50	65

Copyright © 2018
 All ideas, designs, arrangements and plans indicated or represented by this drawing are the property of NICHOLS MELBURG & ROSSETTO. No part of this drawing, design, arrangement or plan shall be used by, or disclosed to any person, firm or corporation for any purpose whatsoever without the written permission of NICHOLS MELBURG & ROSSETTO.

NICHOLS MELBURG ROSSETTO
 ARCHITECTS + ENGINEERS
 300 KNOLLCREST DRIVE
 REDDING, CA. 96002
 (530) 222-3300 (530) 222-3538 FAX
<http://www.nmrdesign.com>

CONSULTANTS

LICENSE STAMPS

PROJECT NAME
 MEDICAL SHOWER ADA UPGRADES FOR HUMBOLDT COUNTY JAIL

901 5TH STREET EUREKA, CALIFORNIA

SHEET TITLE
 FIRST FLOOR HVAC PLAN

DRAWING STATUS
 CONSTRUCTION DOCUMENTS

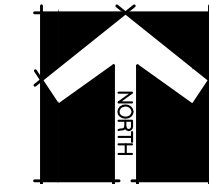
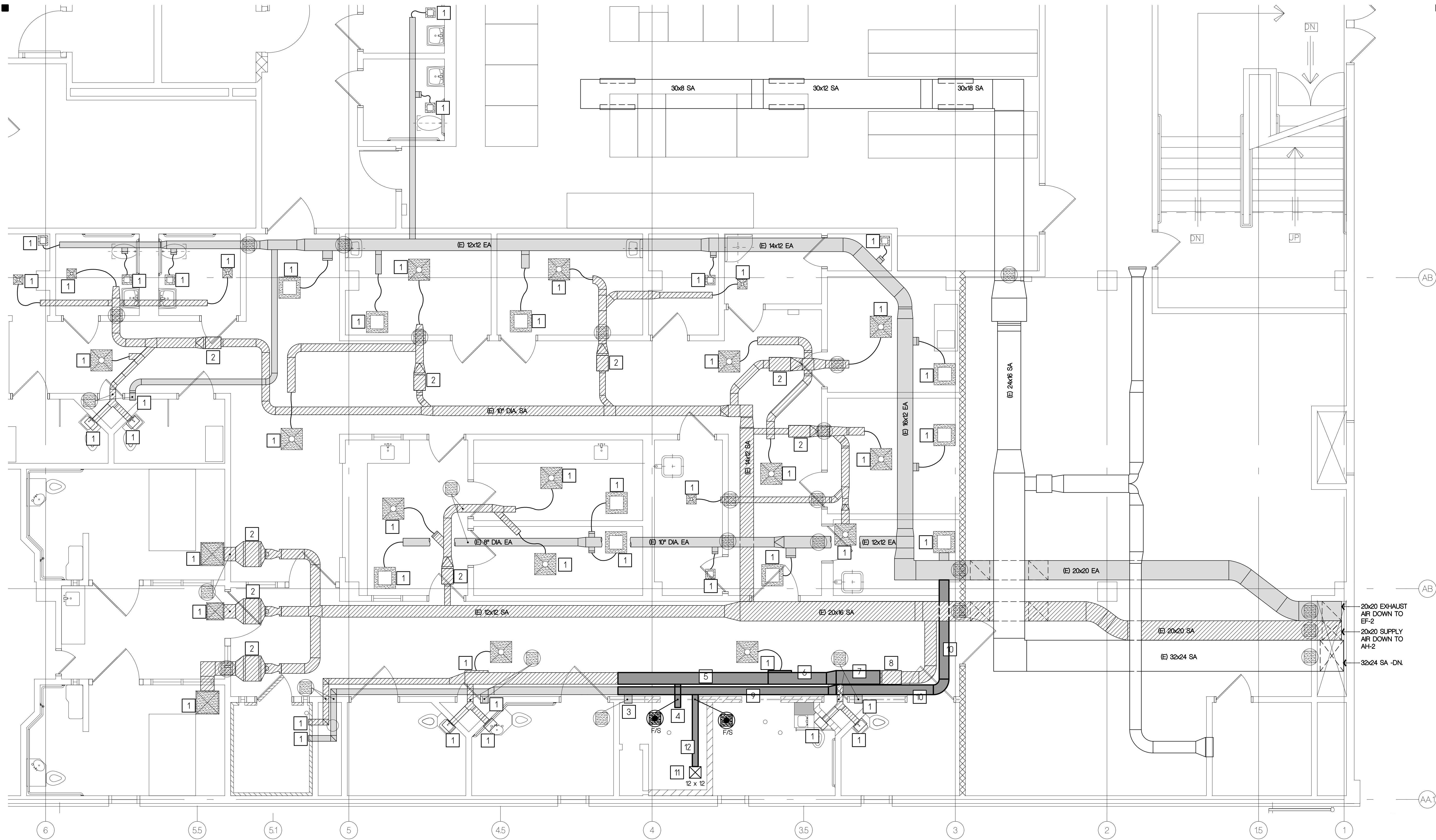
REVISIONS

Sym.	Description	By	Date

Drawn By KSK/AMP
Checked By DRC
Date Drawn 10-04-2018
Scale AS NOTED
Job No. 17-6430

SHEET No.
 M210

LogIn Name: Dawn C
 Pct Date: October 04, 2018 - 6:51 pm
 File Name: N:\Projects\2018\10-04\17-6430 Humboldt County ADA Compliance\15 Medical Shower\Drawings\H-C-mech-pld2dwg
 PERS: A:\CSD\DRG\COPY\PLAN_1-A-C-SHOWER.RVT



SECOND FLOOR MECHANICAL PLAN

SCALE: 1/4" = 1'-0"

GENERAL NOTES

1. SEE SPECIFICATION SECTION 23 05 93 FOR ADDITIONAL INFORMATION.
2. SEE M210 FOR (EXISTING) EF-2 AND AH-2 ORIGINAL DESIGN DATA.
3. SEE M210 FOR (EXISTING) CVV BOX AND VAV BOX ORIGINAL DESIGN DATA.
4. PROTECT OPENINGS AND PENETRATIONS AT FIRE RATED WALLS.

KEYED NOTES

- | | | |
|--|--|---|
| <ol style="list-style-type: none"> 1. MEASURE PRE-CONSTRUCTION AIRFLOW AT AIR INLET OR OUTLET. AT COMPLETION OF PROJECT, BALANCE SYSTEM TO MAINTAIN PRE-CONSTRUCTION AIRFLOW RATES. 2. COORDINATE WITH FACILITY PERSONNEL TO SET VAV BOX AT CURRENT AIRFLOW SETTING FOR COOLING AIRFLOW, DURING BOTH PRE-CONSTRUCTION AIRFLOW TESTING AND POST-CONSTRUCTION AIRFLOW TESTING. 3. MEASURE PRE-CONSTRUCTION AIRFLOW AT AIR INLET OR OUTLET. PROVIDE NEW EXHAUST GRILLE AND BRANCH DUCT, SIZED FOR 150 CFM AND LOCATED OVER NEW SHOWER INCREASE EXHAUST AIRFLOW IN ROOM TO 200 CFM DURING SYSTEM BALANCING (150 CFM FROM NEW GRILLE, 50 CFM FROM EXISTING GRILLE). PROVIDE NEW BALANCE DAMPER IN NEW EXHAUST BRANCH DUCT. | <ol style="list-style-type: none"> 4. MEASURE PRE-CONSTRUCTION AIRFLOW AT AIR OUTLET. PROVIDE NEW SUPPLY GRILLE, BRANCH DUCT, AND VOLUME DAMPER AS REQUIRED TO INCREASE AIRFLOW. INCREASE SUPPLY AIRFLOW IN ROOM TO 200 CFM DURING SYSTEM BALANCING. 5. REPLACE PORTION OF EXISTING 12/8 SUPPLY AIR DUCT WITH 12/12 SUPPLY AIR DUCT. MAKE ALL REQUIRED MODIFICATIONS TO DUCT TRANSITIONS AND BRANCHES. 6. REPLACE PORTION OF EXISTING 12/12 SUPPLY AIR DUCT WITH 14/12 SUPPLY AIR DUCT. MAKE ALL REQUIRED MODIFICATIONS TO DUCT TRANSITIONS AND BRANCHES. 7. REPLACE PORTION OF EXISTING 14/12 SUPPLY AIR DUCT WITH 14/14 SUPPLY AIR DUCT. MAKE ALL REQUIRED MODIFICATIONS TO DUCT TRANSITIONS AND BRANCHES. | <ol style="list-style-type: none"> 8. ADJUST VAV-20 SETTINGS AS REQUIRED TO ACHIEVE INCREASED AIRFLOW REQUIREMENTS. 9. REPLACE PORTION OF EXISTING 8/8 EXHAUST AIR DUCT WITH 10/10 EXHAUST AIR DUCT. MAKE ALL REQUIRED MODIFICATIONS TO DUCT TRANSITIONS AND BRANCHES. 10. REPLACE PORTION OF EXISTING 10/8 EXHAUST AIR DUCT WITH 10/10 EXHAUST AIR DUCT. MAKE ALL REQUIRED MODIFICATIONS TO DUCT TRANSITIONS AND BRANCHES. 11. NEW DETENTION GRILL - SEE SPECIFICATION SECTION 23 00 00 FOR GRILLE INFORMATION. 12. NEW 8/8 GA DUCT |
|--|--|---|

LEGEND

- | | |
|---|---|
| <ul style="list-style-type: none"> (E) CEILING MOUNTED EXHAUST GRILLE (E) CEILING DIFFUSER (E) FIRE/SMOKE DAMPER NEW FIRE/SMOKE DAMPER - SEE SPECIFICATION SECTION 23 00 00 | <ul style="list-style-type: none"> NEW DUCT (E) SUPPLY DUCT (E) EXHAUST DUCT (E) DUCT |
|---|---|

Copyright © 2018

All ideas, designs, arrangements and plans indicated or represented by this drawing are created by, and the property of, MCBUS, MELBURG and ROSSETTO and were created, evolved and developed for use on, and in conjunction with, the specified project. None of such ideas, designs, arrangements or plans shall be used by, or disclosed to any person, firm or corporation for any purpose whatsoever, without the written permission of MCBUS, MELBURG and ROSSETTO.

NM & R

**NICHOLS
MELBURG
ROSSETTO**
 ARCHITECTS + ENGINEERS
 300 KNOLLCREST DRIVE
 REDDING, CA. 96002
 (530) 222-3300 (530) 222-3538 FAX
<http://www.nmrdesign.com>

CONSULTANTS

LICENSE STAMPS

PROJECT NAME
 MEDICAL SHOWER
 ADA UPGRADES
 FOR
 HUMBOLDT
 COUNTY
 JAIL

901 5TH STREET
 EUREKA, CALIFORNIA

SHEET TITLE
 SECOND FLOOR
 HVAC PLAN

DRAWING STATUS
 CONSTRUCTION
 DOCUMENTS

REVISIONS

Sym.	Description	By	Date

Drawn By	KSK/AMP
Checked By	DRC
Date Drawn	10-04-2018
Scale	AS NOTED
Job No.	17-6430

SHEET No.

M220