
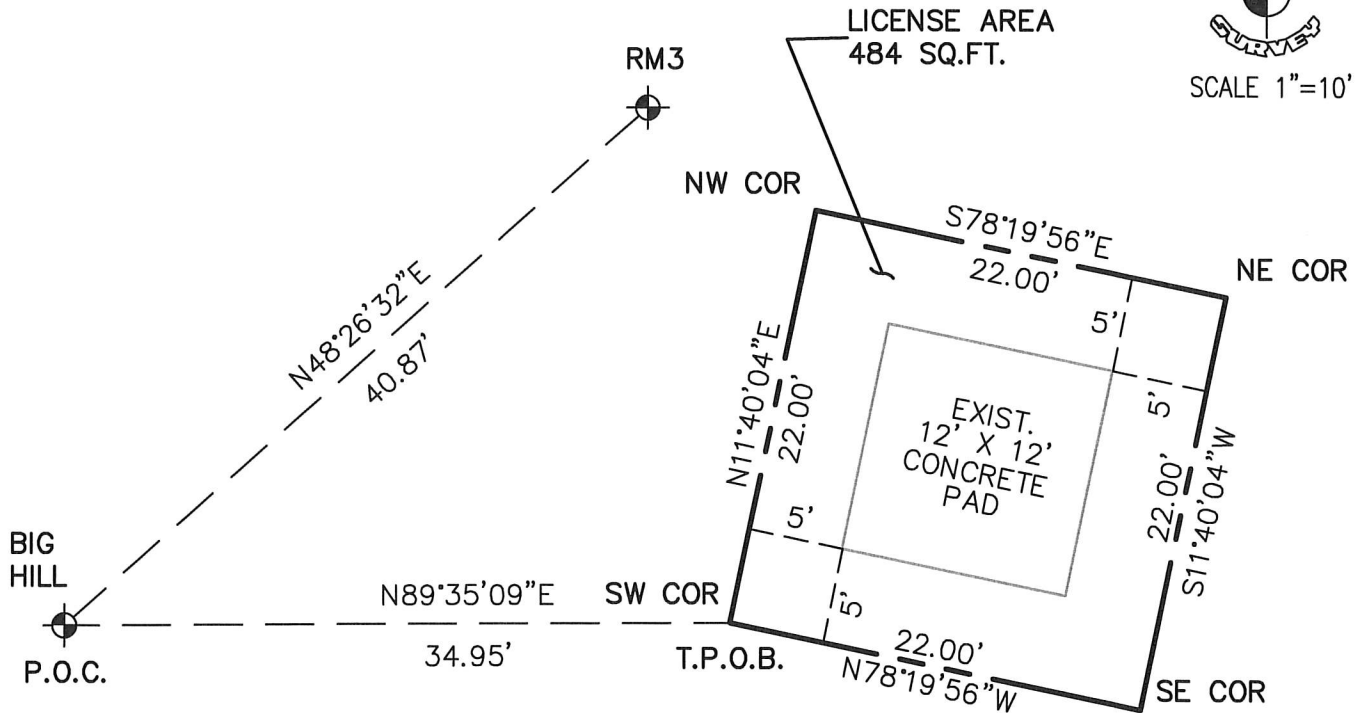
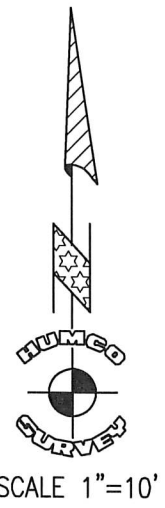


EXHIBIT B

PORTION NORTHEAST QUARTER OF THE NORTHWEST QUARTER OF SECTION 8,
TOWNSHIP 8 NORTH, RANGE 5 EAST, HUMBOLDT MERIDIAN,
COUNTY OF HUMBOLDT, STATE OF CALIFORNIA

LEGEND

-  CONTROL MONUMENT
- P.O.C. POINT OF COMMENCEMENT
- T.P.O.B. TRUE POINT OF BEGINNING



CONTROL POINT AND MONUMENT TABLE*

NAME	NORTHING	EASTING
BIG HILL	2287360.45	6110842.03
RM3	2287387.56	6110872.61
SW CORNER	2287360.70	6110876.98
NW CORNER	2287382.25	6110881.43
NE CORNER	2287377.80	6110902.97
SE CORNER	2287356.25	6110898.52

*CA STATE PLANE COORDINATES, NAD83, ZONE 1
UNITS IN U.S. SURVEY FEET



PREPARED BY OR UNDER SUPERVISION OF:

RONALD GARTON, PLS 7717
HUMBOLDT COUNTY SURVEYOR

4/1/2021

DATE

BIG HILL
TELECOMMUNICATION LICENSE
PROJECT NO. 162766