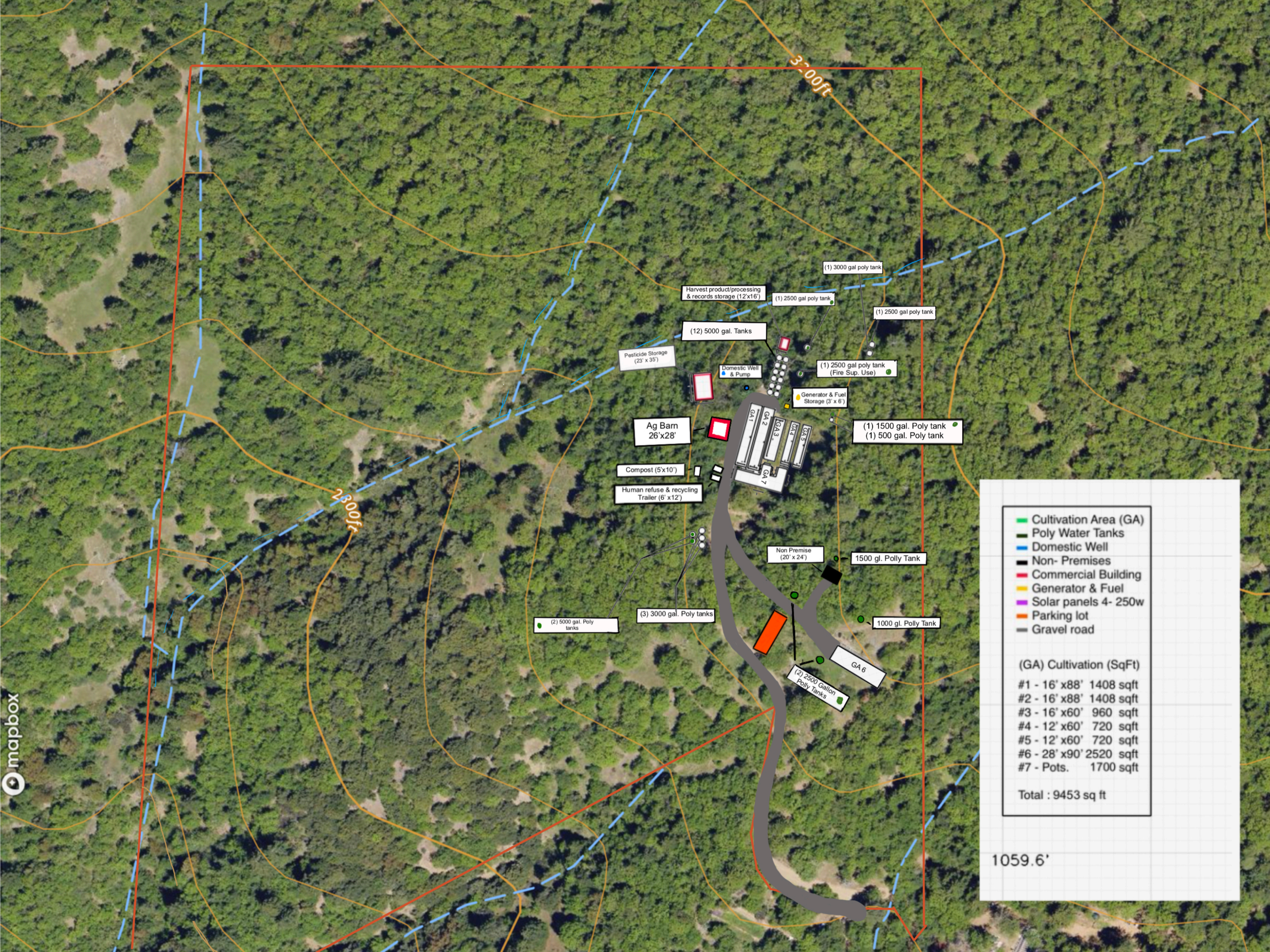


- Cultivation Area (GA)
- Poly Water Tanks
- Domestic Well
- Non- Premises
- Commercial Building
- Generator & Fuel
- Solar panels 4- 250w
- Parking lot
- Gravel road

(GA) Cultivation (SqFt)

#1 - 16' x 88'	1408 sqft
#2 - 16' x 88'	1408 sqft
#3 - 16' x 60'	960 sqft
#4 - 12' x 60'	720 sqft
#5 - 12' x 60'	720 sqft
#6 - 28' x 90'	2520 sqft
#7 - Pots.	1700 sqft
Total :	9453 sq ft

1059.6'



	Cultivation Area (GA)
	Poly Water Tanks
	Domestic Well
	Non- Premises
	Commercial Building
	Generator & Fuel Storage
	Solar panels 4- 250w
	Parking lot
	Gravel road

(GA) Cultivation (SqFt)	
#1 - 16' x88'	1408 sqft
#2 - 16' x88'	1408 sqft
#3 - 16' x60'	960 sqft
#4 - 12' x60'	720 sqft
#5 - 12' x60'	720 sqft
#6 - 28' x90'	2520 sqft
#7 - Pots.	1700 sqft
Total : 9453 sq ft	

1059.6'

- Harvest product/processing & records storage (12'x16')
- (1) 2500 gal poly tank
- (1) 3000 gal poly tank
- (1) 2500 gal poly tank
- (1) 2500 gal poly tank (Fire Sup. Use)
- (1) 2500 gal poly tank
- (12) 5000 gal. Tanks
- Pesticide Storage (23' x 35')
- Domestic Well & Pump
- Generator & Fuel Storage (3' x 6')
- (1) 1500 gal. Poly tank
- (1) 500 gal. Poly tank
- Ag Barn 26'x28'
- Compost (5'x10')
- Human refuse & recycling Trailer (6' x12')
- GA 1
- GA 2
- GA 3
- GA 4
- GA 5
- GA 6
- GA 7
- Non Premise (20' x 24')
- 1500 gl. Polly Tank
- 1000 gl. Polly Tank
- (2) 5000 gal. Poly tanks
- (3) 3000 gal. Poly tanks
- (2) 2500 Gallon Polly Tanks

3700ft

2800ft



- Cultivation Area (GA)
- Poly Water Tanks
- Domestic Well
- Non- Premises
- Commercial Building
- Generator & Fuel
- Solar panels 4- 250w
- Parking lot
- Gravel road

(GA) Cultivation (SqFt)	
#1 - 16' x88'	1408 sqft
#2 - 16' x88'	1408 sqft
#3 - 16' x60'	960 sqft
#4 - 12' x60'	720 sqft
#5 - 12' x60'	720 sqft
#6 - 28' x90'	2520 sqft
#7 - Pots.	1700 sqft
Total :	9453 sq ft

1059.6'