

HUMBOLDT COUNTY DEPARTMENT OF PUBLIC WORKS
ROAD EVALUATION REPORT

PART A: *Part A may be completed by the applicant*

Applicant Name: TOP CAMP (MILLAN HANG) APN: 210-131-021

Planning & Building Department Case/File No.: APPS: 12947

Road Name: Burr VALLEY RD (complete a separate form for each road)

From Road (Cross street): ST. Hwy 36

To Road (Cross street): SUBJECT PARCEL

Length of road segment: 8 miles Date Inspected: 9/19/19

Road is maintained by: ☐ County ☒ Other _____
(State, Forest Service, National Park, State Park, BLM, Private, Tribal, etc)

Check one of the following:

Box 1 ☐ The entire road segment is developed to Category 4 road standards (20 feet wide) or better. If checked, then the road is adequate for the proposed use without further review by the applicant.

Box 2 ☒ The entire road segment is developed to the equivalent of a road category 4 standard. If checked, then the road is adequate for the proposed use without further review by the applicant.

An equivalent road category 4 standard is defined as a roadway that is generally 20 feet in width, but has pinch points which narrow the road. Pinch points include, but are not limited to, one-lane bridges, trees, large rock outcroppings, culverts, etc. Pinch points must provide visibility where a driver can see oncoming vehicles through the pinch point which allows the oncoming vehicle to stop and wait in a 20 foot wide section of the road for the other vehicle to pass.

Box 3 ☐ The entire road segment is not developed to the equivalent of road category 4 or better. The road may or may not be able to accommodate the proposed use and further evaluation is necessary. Part B is to be completed by a Civil Engineer licensed by the State of California.

The statements in PART A are true and correct and have been made by me after personally inspecting and measuring the road.

Signature

Date

Name Printed

Important: Read the instructions before using this form. If you have questions, please call the Dept. of Public Works Land Use Division at 707.445.7205.

RECEIVED
OCT 1 2019

Planning Division

For the [unclear] [unclear] [unclear]
[unclear] [unclear] [unclear]

[unclear] [unclear] [unclear]
[unclear] [unclear] [unclear]

[unclear] [unclear] [unclear]

8

[unclear] [unclear] [unclear]



Mile 0.0 from HWY 36



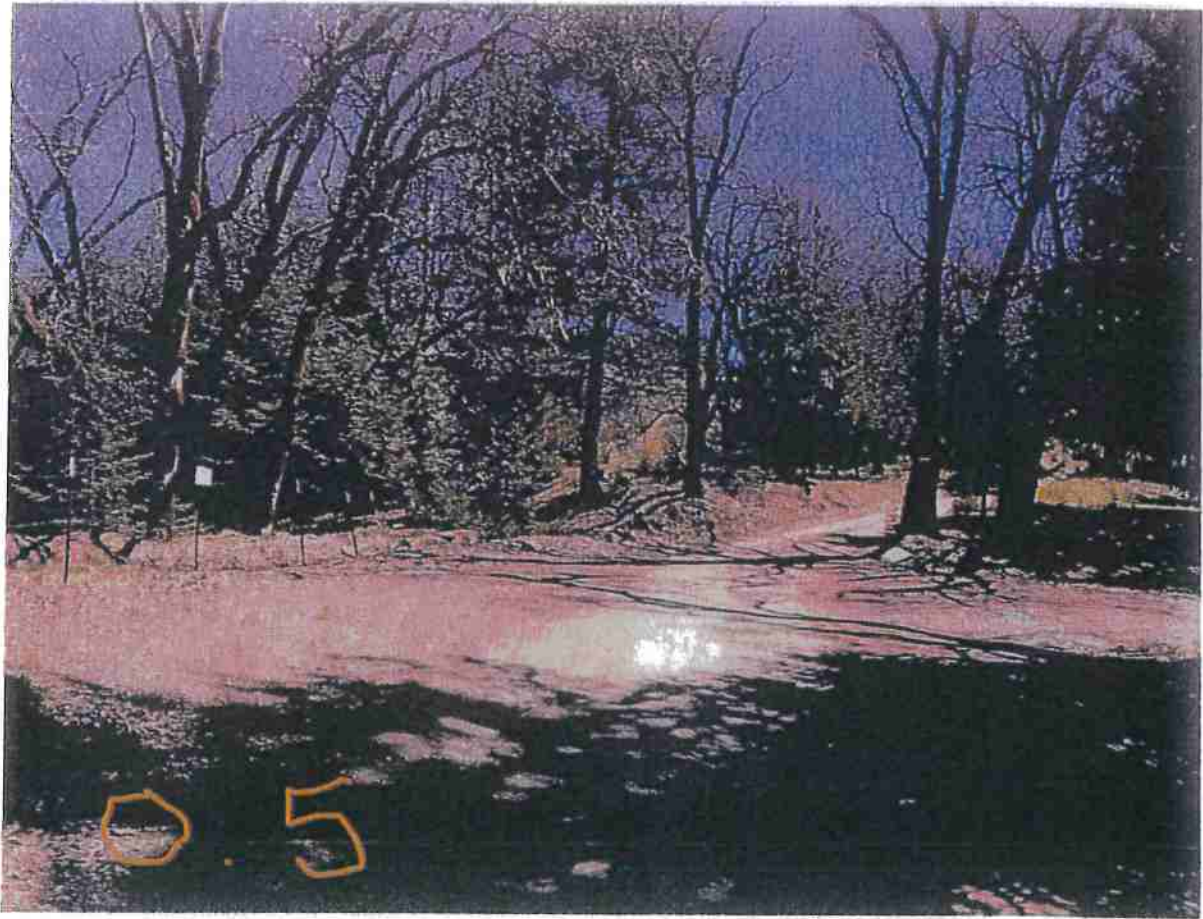
Mile 0.1 from HWY 36



Mile 0.3 from HWY 36



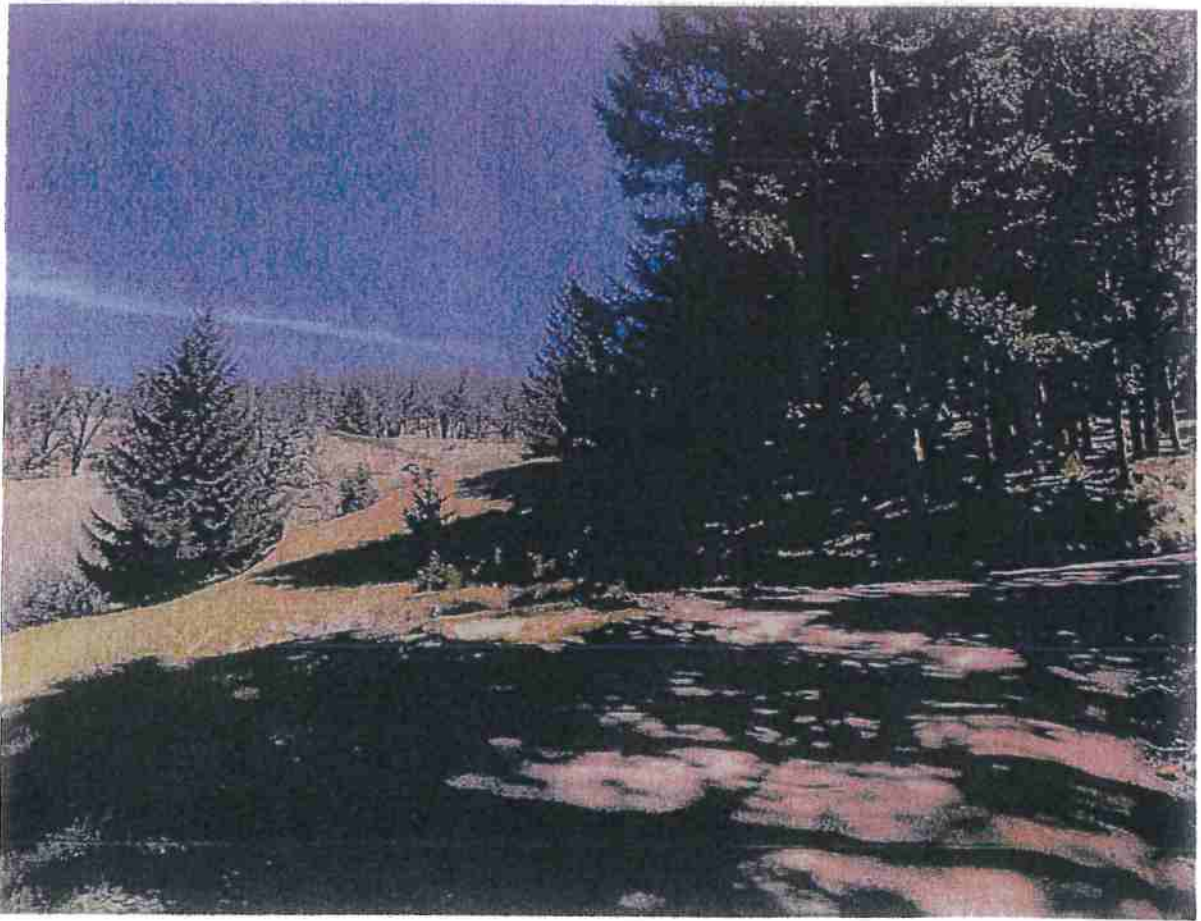
Mile 0.4 from HWY 36



Mile 0.5 from HWY 36



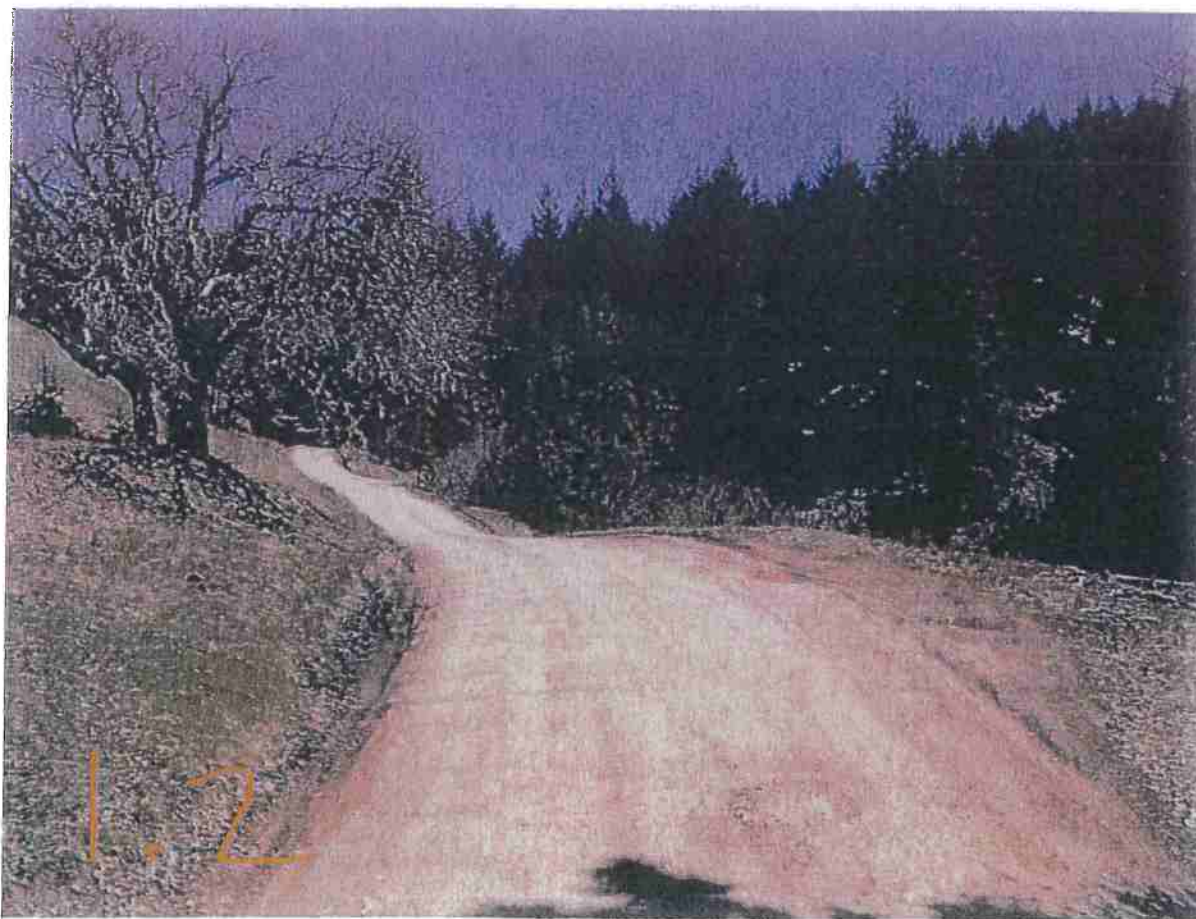
Mile 0.6 from HWY 36



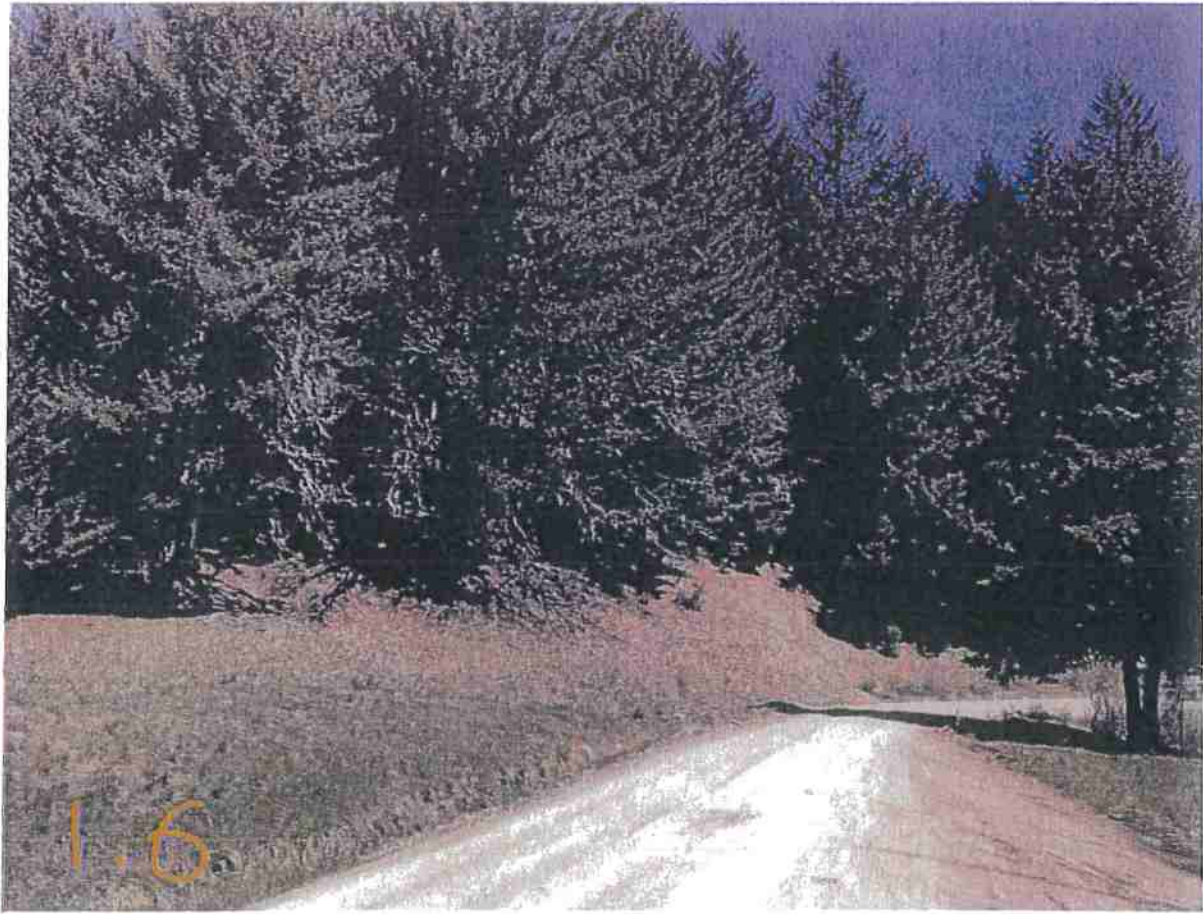
0.7 miles from HWY 36



Mile 0.8 from HWY 36



Mile 1.2 from HWY 36



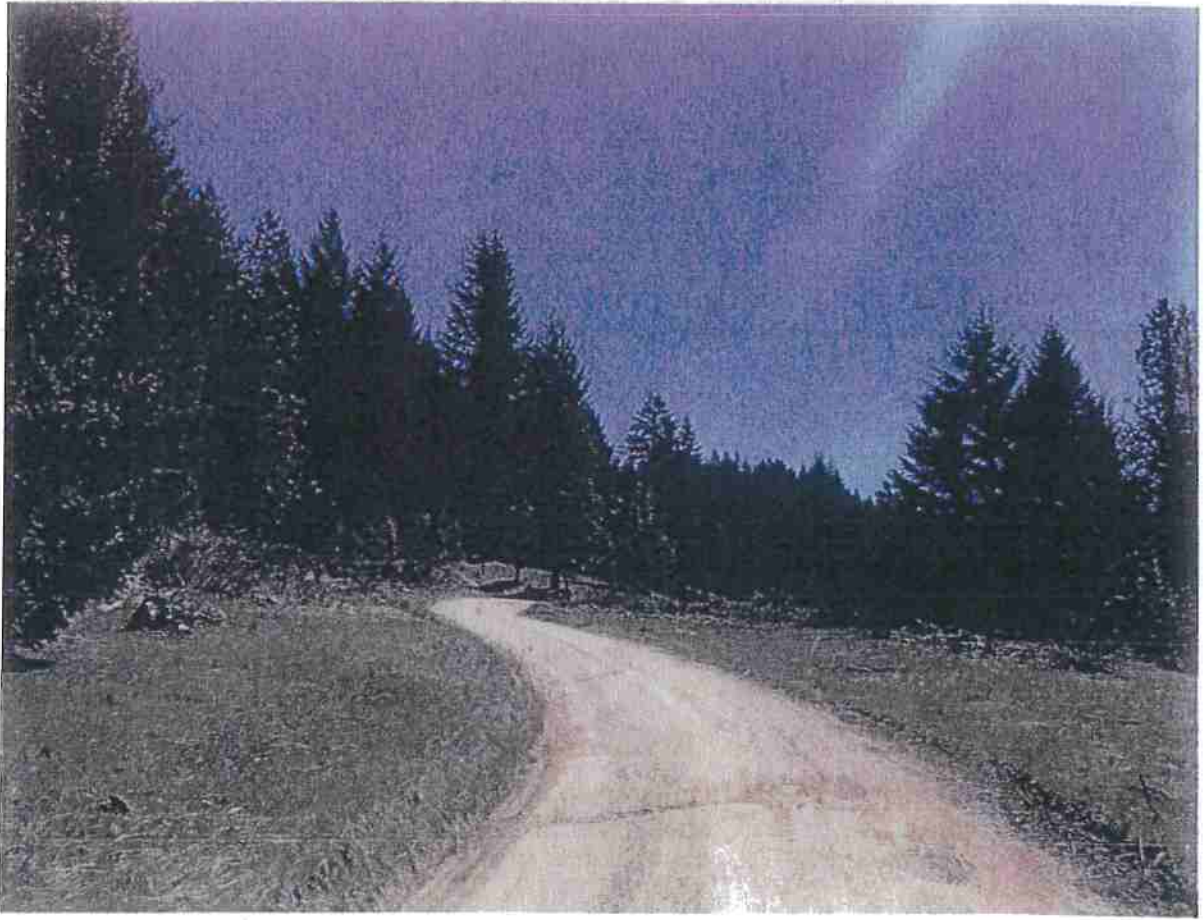
Mile 1.6 from HWY 36



Mile 1.7 from HWY 36



Mile 1.8 from HWY 36



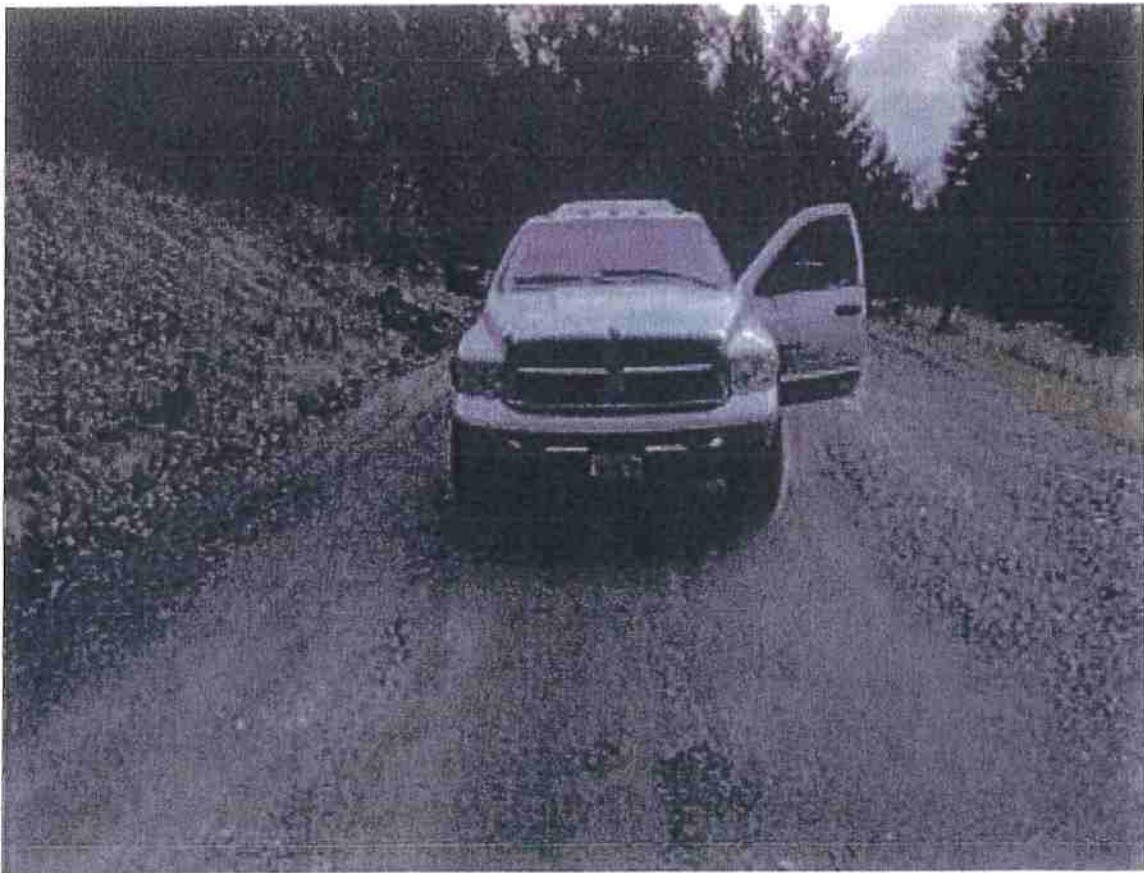
2.0 miles from HWY 36



2.5 miles from HWY 36



3.0 miles from HWY 36



3.5 miles from HWY 36



4 miles from HWY 36



4.5 miles from HWY 36



5 miles from HWY 36



5.5 miles from HWY 36



6.3 miles from HWY 36



7 miles from HWY 36



7.7 miles from HWY 36