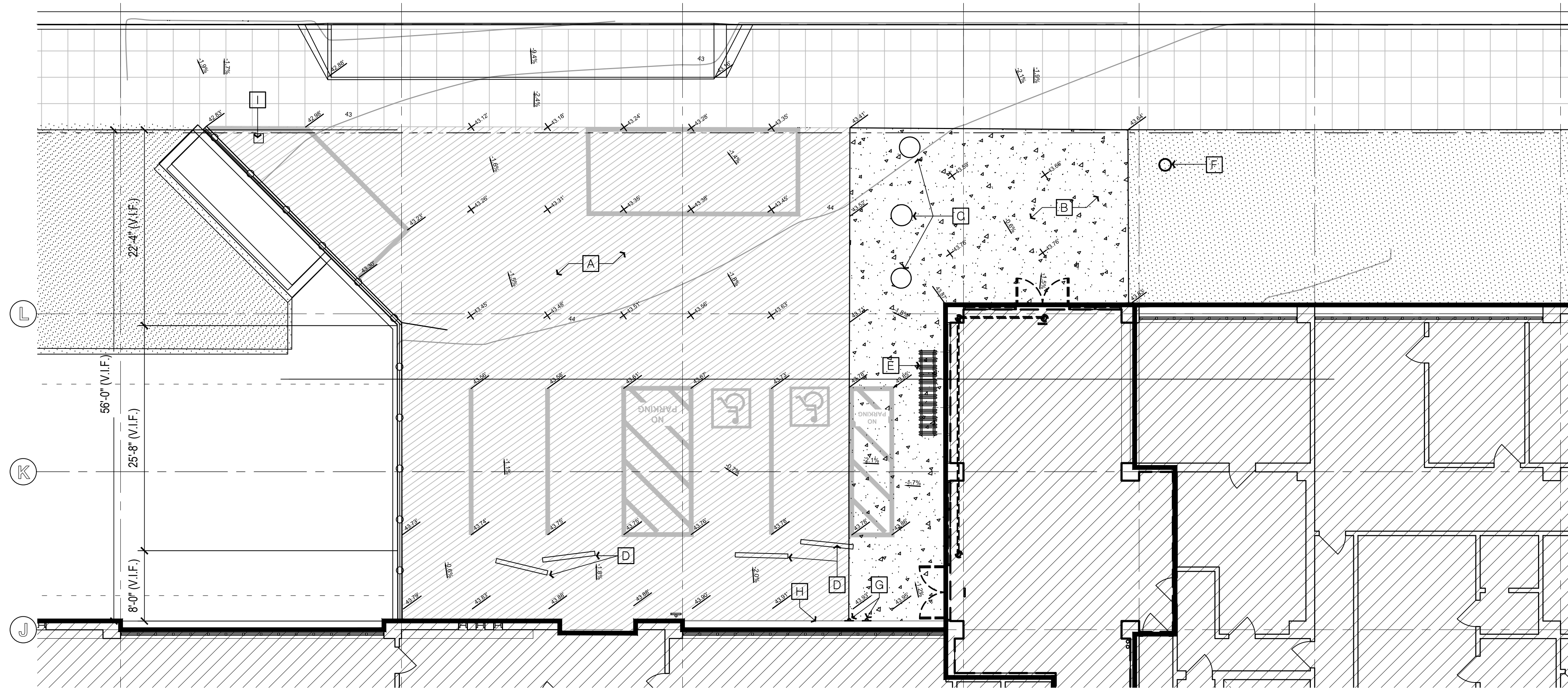


**NEW WORK SITE PLAN** 1  
SCALE: 1/8" = 1'-0"



**DEMOLITION SITE PLAN** 2  
SCALE: 1/8" = 1'-0"

### NEW WORK SHEET NOTES

(ALL ITEMS ARE NEW UNLESS NOTED (E) OR EXISTING)

- 1 6" CONCRETE CURB.
- 2 (E) SAFETY BOX.
- 3 (E) FIRE WATER CONNECTIONS.
- 4 REFLECTORIZED PARKING SIGN (SEE DETAIL 2/A820)
- 5 CONCRETE WHEEL STOP (SEE DETAIL 7/A820)
- 6 UNIVERSAL ACCESSIBILITY SYMBOL (SEE DETAIL 1/A820)
- 7 4" PERIMETER STRIPING.
- 8 EXISTING SIDEWALK TO REMAIN
- 9 CONCRETE BARRIER (SEE DETAIL 9/A820)
- 10 EXISTING SHERIFF POLE SIGN
- 11 CONTROL JOINTS (SEE DETAIL 3/A820)
- 12 PEDESTRIAN ACCESS TO BUILDING
- 13 ACCESS AISLE
- 14 INSTALL NEW 12X12 CONCRETE AREA DRAIN WITH GRATE AND STRAINER
- 15 CONCRETE SLAB ON GRADE INDICATED IN THE SHADED AREA. INSTALL WITH WATERPROOFING MEMBRANE (SEE DETAIL 5/A820)
- 16 COUNTY FURNISHED CALL BOX, CONTRACTOR INSTALL BOX PATHWAYS AND CABLING
- 17 PREP, PRIME AND PAINT EXISTING CONCRETE WALL APPROXIMATELY 300 SQ FT.
- 18 CAST IN PLACE TRUNCATED DOMES, FEDERAL YELLOW. SEE DETAIL 10/A820

### NEW WORK GENERAL NOTES

- 1 ACCESS AISLE SHALL BE MARKED WITH A BLUE PAINTED BORDERLINE AROUND THEIR PERIMETER. THE AREA WITH THE BLUE BORDERLINES SHALL BE MARKED WITH HATCHED LINES A MAXIMUM OF 36" ON CENTER IN A COLOR CONTRASTING WITH THAT OF THE AISLE SURFACE. THE WORDS "NO PARKING" SHALL BE PAINTED ON THE SURFACE WITHIN EACH ACCESS AISLE IN WHITE LETTERS A MINIMUM OF 12" IN HEIGHT AND LOCATED TO BE VISIBLE FROM THE ADJACENT VEHICULAR WAY.

### DEMOLITION SHEET NOTES

(ALL ITEMS ARE EXISTING UNLESS NOTED (N) OR NEW)

- A REMOVE ASPHALT PAVING COMPLETELY.
- B REMOVE CONCRETE SIDEWALK COMPLETELY.
- C REMOVE CONCRETE BOLLARD COMPLETELY.
- D REMOVE CONCRETE WHEEL-STOP BLOCK
- E REMOVE BIKE RACK, TURN OVER TO COUNTY.
- F SHERIFF POLE SIGN TO REMAIN
- G FIRE WATER CONNECTION TO REMAIN
- H SAFETY BOX TO REMAIN
- I REMOVE AREA FLOOR DRAIN AND STRAINER. PREPARE CONNECTION FOR NEW PAVING.

### DEMOLITION GENERAL NOTES

- 1 THE SITE WORK IS DIRECTLY ABOVE AN EXISTING EMERGENCY OPERATIONS CENTER. CONTRACTORS RESPONSIBILITY TO COORDINATE AND SCHEDULE WORK WITH THE COUNTY COUNTY STAFF.

### DEMOLITION GENERAL NOTES

- 1 THE SITE WORK IS DIRECTLY ABOVE AN EXISTING EMERGENCY OPERATIONS CENTER. CONTRACTORS RESPONSIBILITY TO COORDINATE AND SCHEDULE WORK WITH THE COUNTY COUNTY STAFF.

Copyright © 2023

All ideas, designs, arrangements and plans indicated or represented by the drawings are owned by and the property of NICHOLS MELBURG and ROSSETTO, and shall remain the property of NICHOLS MELBURG and ROSSETTO. No part of these drawings or plans shall be used by, or disclosed to any person, firm or corporation for any purpose whatsoever without the written permission of NICHOLS MELBURG and ROSSETTO.

**NICHOLS  
MELBURG  
&  
ROSSETTO**  
ARCHITECTS + ENGINEERS  
300 KNOLLCREST DRIVE  
REDDING, CA 96002  
(530) 222-3300 (530) 222-3538 FAX  
<http://www.nmrdesign.com>

LICENSE STAMPS

**PROJECT NAME**  
4TH STREET  
IMPROVEMENTS

**FOR**  
HUMBOLDT  
COUNTY  
COURTHOUSE

**825 5TH STREET  
EUREKA, CALIFORNIA**

**SHEET TITLE**  
NEW WORK SITE  
DEMO SITE

**DRAWING STATUS**  
CONSTRUCTION  
DOCUMENTS

**REVISIONS**

Sym.	Description	By	Date

<b>Drawn By</b>	NMR
<b>Checked By</b>	DRC
<b>Date Drawn</b>	2/15/2023
<b>Scale</b>	1/8" = 1'-0"
<b>Job No.</b>	17-6430

**SHEET No.**  
A220

Logn Name: Amy P.  
 Plot Date: March 06, 2023 - 03:31 pm  
 File Name: N:\Projects\00000000\00000000\17-6430 Humboldt County ADA Compliance\0 Courthouse Parking\Drawings\CH-Striping.dwg  
 PEPs: N:\C:\HRR\00000000\17-6430 Humboldt County ADA Compliance\0 Courthouse Parking\Drawings\CH-Striping.dwg



LICENSE STAMPS



PROJECT NAME  
**4TH STREET IMPROVEMENTS**  
 FOR  
**HUMBOLDT COUNTY COURTHOUSE**  
 825 5TH STREET  
 EUREKA, CALIFORNIA

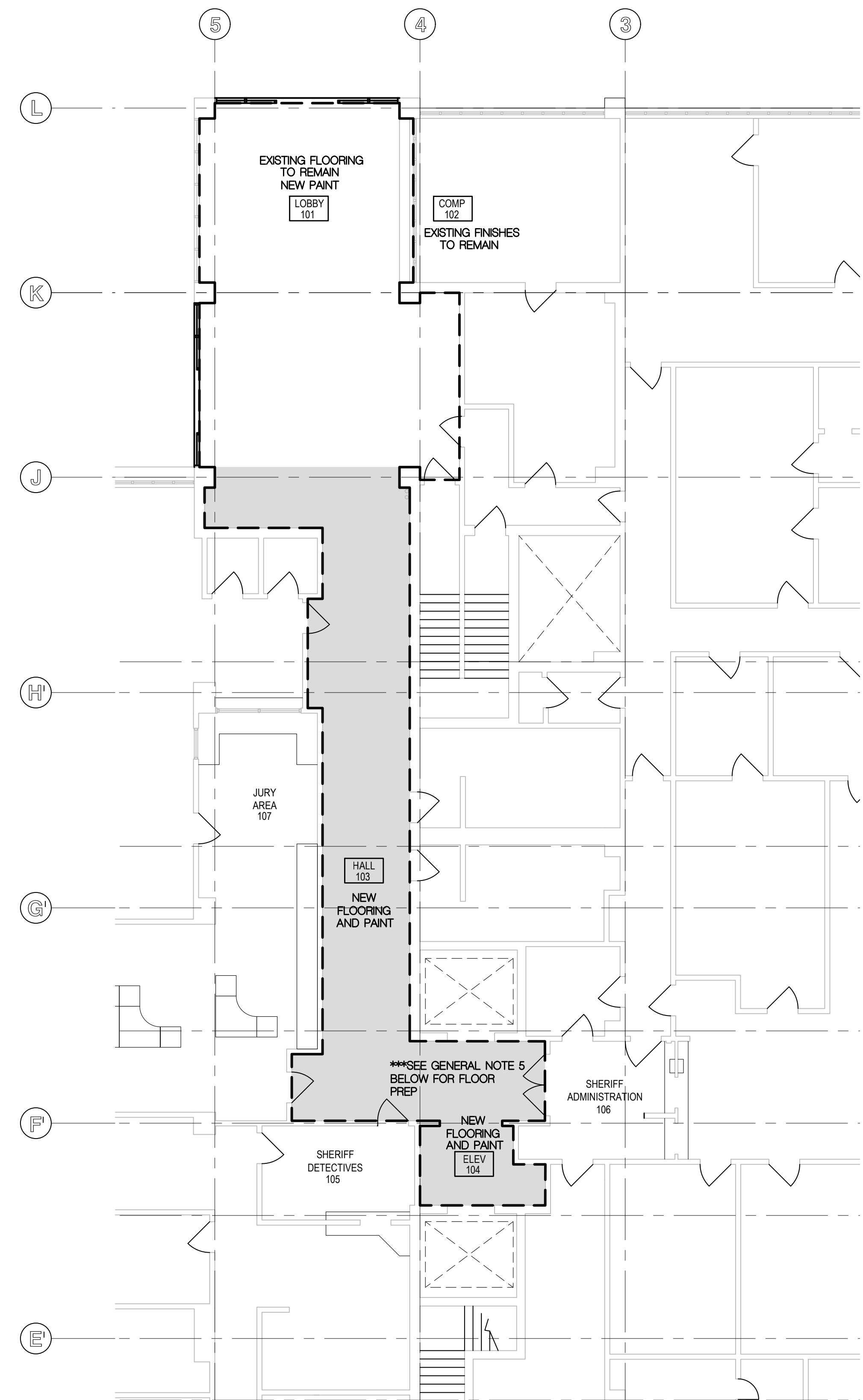
SHEET TITLE  
**NEW WORK & DEMO FLOOR PLAN**

DRAWING STATUS  
**CONSTRUCTION DOCUMENTS**

REVISIONS  
 Sym. Description By Date

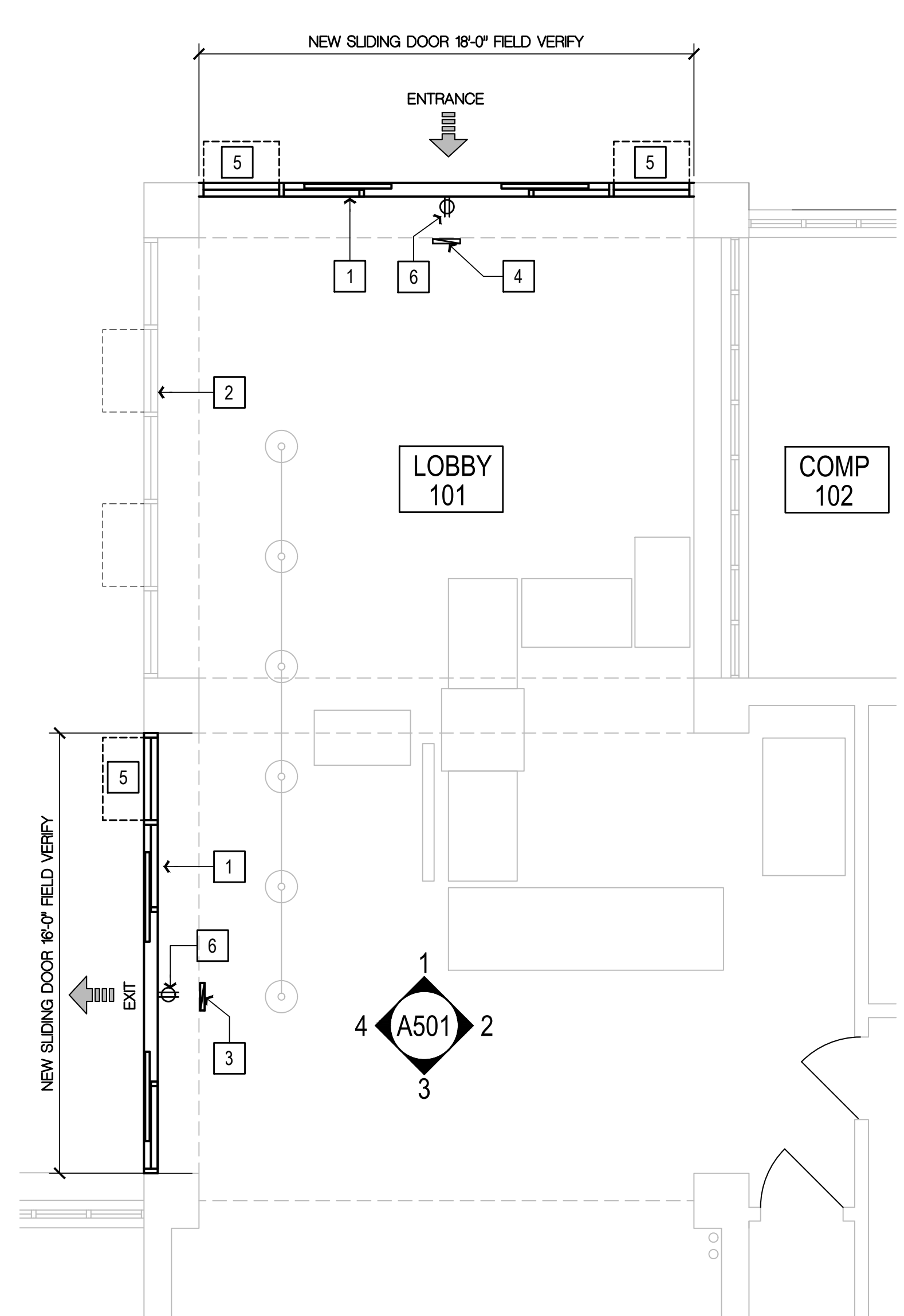
Drawn By	CD
Checked By	DRC
Date Drawn	2/15/2023
Scale	AS NOTED
Job No.	17-6430

SHEET No.  
**A230**



**INTERIOR FINISH PLAN** 1  
 SCALE: 1/8" = 1'-0"

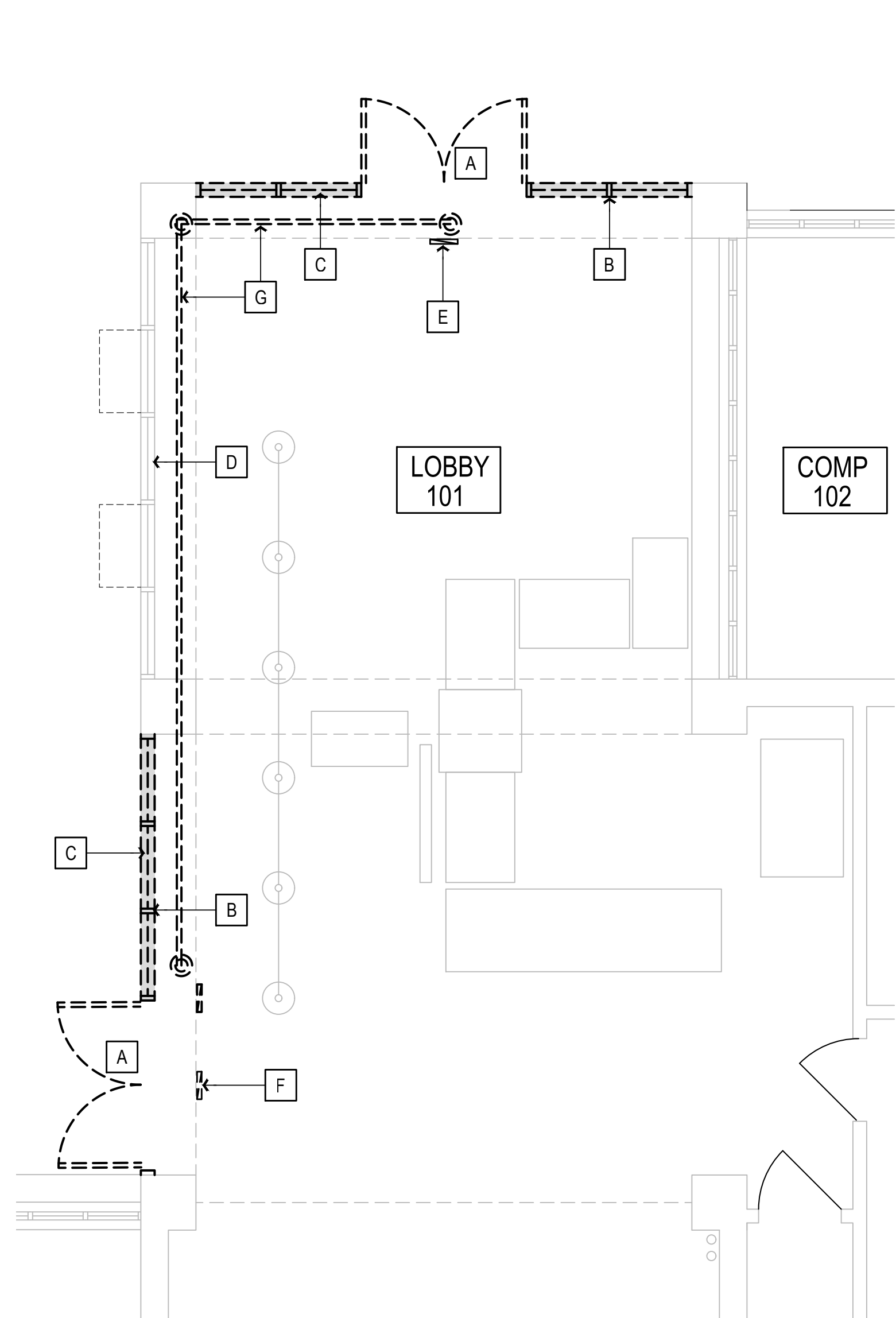
- INTERIOR FINISH GENERAL NOTES**
- INTERIOR WORK IS LIMITED TO ROOMS: 101, 102, 103, 104.
  - INSTALL NEW LUXURY VINYL TILE FLOORING AND 4" COVED RUBBER BASEBOARD IN THE AREA INDICATED WITH A SHADED HATCH. THE FLOORING IN LOBBY 101 IS TO REMAIN. PROTECT FLOORING IN LOBBY 101 DURING CONSTRUCTION FROM DAMAGE. REMOVE ALL CONSTRUCTION DEBRIS DAILY.
  - PREPARE, PRIME & PAINT, TO MATCH THE SHERIFFS LOBBY; ALL WALLS SOFFITS AND DOOR FRAMES IN ROOM: LOBBY 101, HALL 103 AND ELEV 104. PAINT THE ELEVATOR DOORS, CEILING HEIGHT IN HALL 103 AND ELEV 104 IS APPROXIMATELY 9'-0" ABOVE FINISHED FLOOR AND IS AN EXISTING SUSPENDED ACOUSTICAL CEILING SYSTEM TO REMAIN. PAINT ALL GYPSUM BOARD WALLS, SOFFITS AND CEILINGS IN LOBBY 101 REFER TO A501 FOR INTERIOR ELEVATIONS OF THE LOBBY 101.
  - CONCEAL ALL CONDUIT AND CONDUCTORS WITHIN THE EXISTING WALLS. CUT, PATCH AND REPAIR EXISTING GYPSUM BOARD TO CONCEAL THE NEW CONDUIT. SURFACE MOUNTED CONDUIT IS NOT ACCEPTABLE.
  - CONTRACTOR RESPONSIBILITY TO REMOVE ALL THE EXISTING FLOORING IN THE AREA INDICATED ON THE INTERIOR FINISH PLAN. CONTRACTOR TO PREPARE THE SLAB FOR NEW FLOORING IN GROUND DOOR CLOSERS ARE LOCATED AT 6 LOCATIONS; CONTRACTOR TO GRIND THE IN FLOOR DOOR CLOSERS FLUSH WITH THE SLAB PRIOR TO INSTALLATION OF THE NEW FLOORING.



**NEW WORK PLAN** 2  
 SCALE: 1/4" = 1'-0"

- NEW WORK SHEET NOTES**
- (ALL ITEMS ARE NEW UNLESS NOTED (E) OR EXISTING)
- ALUMINUM MOTORIZED SLIDING DOORS WITH MOTION SENSOR. SEE ELECTRICAL GENERAL NOTES BELOW.
  - (E) WINDOW TO REMAIN.
  - INSTALL (E) ILLUMINATED EXIT SIGN AT NEW LOCATION.
  - INSTALL (E) ILLUMINATED EXIT SIGN.
  - AWNING WINDOW.
  - SEE MANUFACTURER'S ASSEMBLY INSTRUCTIONS FOR ELECTRICAL POINT OF CONNECTION.

- ELECTRICAL GENERAL NOTES**
- INSTALL 20A 120V CIRCUIT TO NEW SLIDING DOORS FROM ELECTRICAL PANEL IN BASEMENT.
  - PROVIDE 3/4" WITH 2#12, 1#12 GRD. TO SPARE 120V EMERGENCY CIRCUIT FOR POWER. PROVIDE A NEW 20AMP, 1-POLE CIRCUIT BREAKER. PROVIDE ALL REQUIRED MOUNTING HARDWARE. MATCH AIC RATING OF EXISTING DEVICES WITHIN PANEL.
  - CONCEAL ALL CONDUIT AND CONDUCTORS WITHIN THE EXISTING WALLS. CUT, PATCH AND REPAIR EXISTING GYPSUM BOARD TO CONCEAL THE NEW CONDUIT. SURFACE MOUNTED CONDUIT IS NOT ACCEPTABLE.



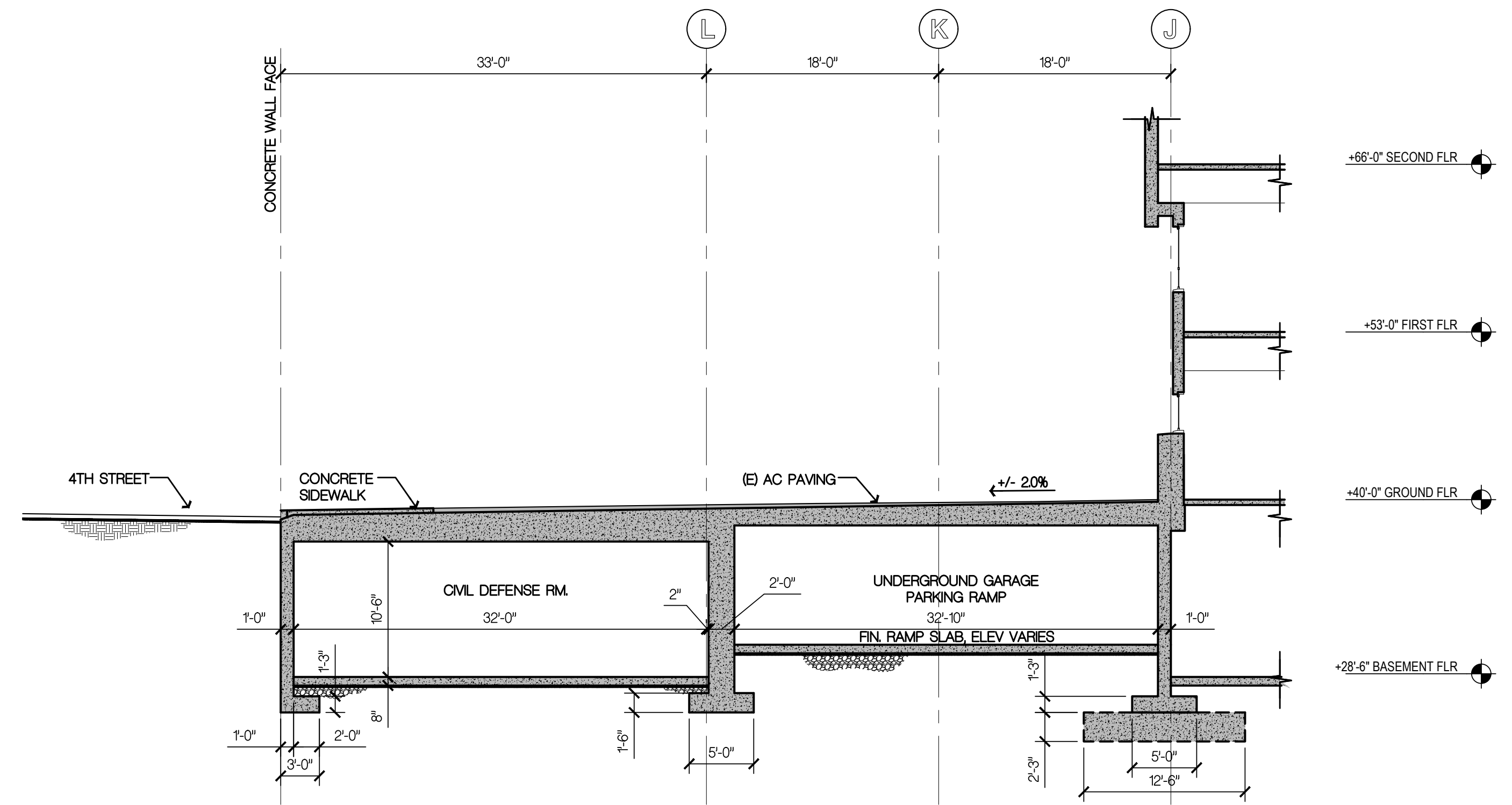
**DEMOLITION PLAN** 3  
 SCALE: 1/4" = 1'-0"

- DEMOLITION SHEET NOTES**
- (ALL ITEMS ARE EXISTING UNLESS NOTED (N) OR NEW)
- REMOVE DOUBLE DOOR COMPLETELY.
  - REMOVE WINDOW COMPLETELY.
  - REMOVE CONCRETE CURB COMPLETELY.
  - WINDOW TO REMAIN.
  - ILLUMINATED EXIT SIGN TO REMAIN.
  - REMOVE EXIT SIGN AND REINSTALL IN THE NEW LOCATION. REPLACE CONDUCTOR AND CONDUIT TO EXTEND CIRCUIT TO NEW LOCATION.
  - REMOVE GYP BOARD SOFFIT TO INSTALL NEW CONDUCTORS AND CONDUIT TO MOTORIZED DOORS.

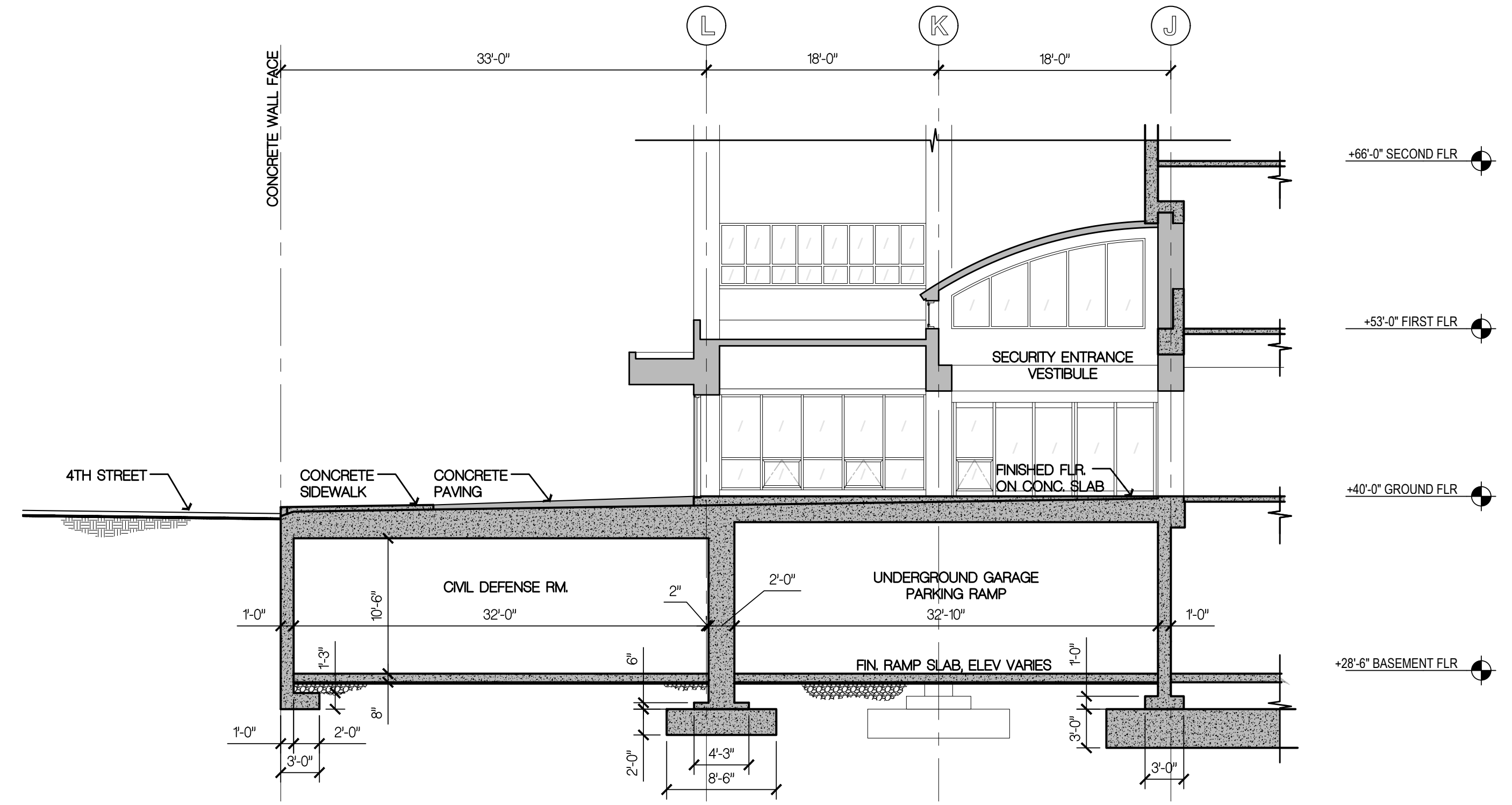
- DEMOLITION GENERAL NOTES**
- FIELD-VERIFY EXISTING CONSTRUCTION DEPICTED IN THESE DRAWINGS.
  - COORDINATE DEMOLITION WORK OF ALL DISCIPLINES WITH LOCATIONS AND DIMENSIONS OF NEW CONSTRUCTION INDICATED IN THESE DRAWINGS. PRIOR TO COMMENCING ANY DEMOLITION WORK, COORDINATE WITH APPROVED SHOP DRAWINGS AND MANUFACTURER'S DATA FOR NEW SYSTEMS, EQUIPMENT, FEATURES OF CONSTRUCTION AND TEMPORARY AND FINAL CONDITIONS AS INDICATED IN THESE DOCUMENTS.
  - DEMOLITION AND REMOVAL OF EXISTING CONSTRUCTION, FIXTURES, EQUIPMENT, AND FINISHES SHALL BE PERFORMED IN A NEAT, WORKMANLIKE MANNER, WITH CLEAN, STRAIGHT EDGES SUITABLE TO ACCOMMODATE NEW CONSTRUCTION, WHERE APPLICABLE.
  - ALL EXISTING CONSTRUCTION, FIXTURES, EQUIPMENT AND FINISHES TO REMAIN SHALL BE PROTECTED FROM DAMAGE DURING DEMOLITION AND NEW CONSTRUCTION.
  - AT WALLS TO BE REMOVED UNDER THIS CONTRACT, WORK SHALL INCLUDE REMOVAL AND CAPPING OFF OF ALL MECHANICAL, PLUMBING, ELECTRICAL AND RELATED PIPING, FIXTURES, CONDUIT, CABLING AND ALL OTHER EQUIPMENT WITHIN WALLS.
  - WHERE EXISTING WORK TO BE REMOVED PENETRATES EXISTING FIRE-RATED PARTITIONS TO REMAIN, THE PARTITION SHALL BE PATCHED TO MEET OR EXCEED FIRE RATINGS AS REQUIRED BY THE CURRENT CBC. FINISHES SHALL MATCH EXISTING WORK TO REMAIN.
  - PROVIDE TEMPORARY DUSTPROOF PARTITIONS AS NECESSARY FOR SEPARATION OF CONSTRUCTION AREAS AND ADJACENT OCCUPIED AREAS.







**1** EXISTING BUILDING SECTION  
 SCALE: 1/8" = 1'-0"



**2** EXISTING BUILDING SECTION  
 SCALE: 1/8" = 1'-0"

LICENSE STAMPS



**PROJECT NAME**  
 4TH STREET  
 IMPROVEMENTS  
 FOR  
 HUMBOLDT  
 COUNTY  
 COURTHOUSE  
 825 5TH STREET  
 EUREKA, CALIFORNIA

**SHEET TITLE**  
 EXISTING  
 BUILDING SECTIONS

**DRAWING STATUS**  
 CONSTRUCTION  
 DOCUMENTS

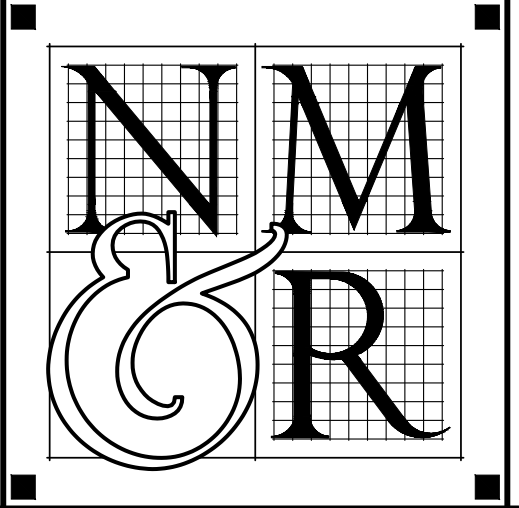
**REVISIONS**

Sym.	Description	By	Date

<b>Drawn By</b>	CDS
<b>Checked By</b>	DRC
<b>Date Drawn</b>	2/15/2023
<b>Scale</b>	AS NOTED
<b>Job No.</b>	17-6430

**SHEET No.**  
**A400**

Copyright © 2023  
 All ideas, designs, arrangements and plans indicated or represented by this drawing are owned by and the property of NICHOLS MELBURG and ROSSETTO, and are hereby reserved and developed for use of, and in conjunction with, the specified project. None of such ideas, designs, arrangements or plans shall be used by, or disclosed to any person, firm or corporation for any purpose whatsoever without the written permission of NICHOLS MELBURG and ROSSETTO.



**NICHOLS  
MELBURG  
ROSSETTO**  
ARCHITECTS + ENGINEERS  
300 KNOLLCREST DRIVE  
REDDING, CA 96002  
(530) 222-3300 (530) 222-3538 FAX  
<http://www.nmrdesign.com>

LICENSE STAMPS



**PROJECT NAME**  
**4TH STREET  
IMPROVEMENTS**  
 FOR  
**HUMBOLDT  
COUNTY  
COURTHOUSE**  
**825 5TH STREET  
EUREKA, CALIFORNIA**

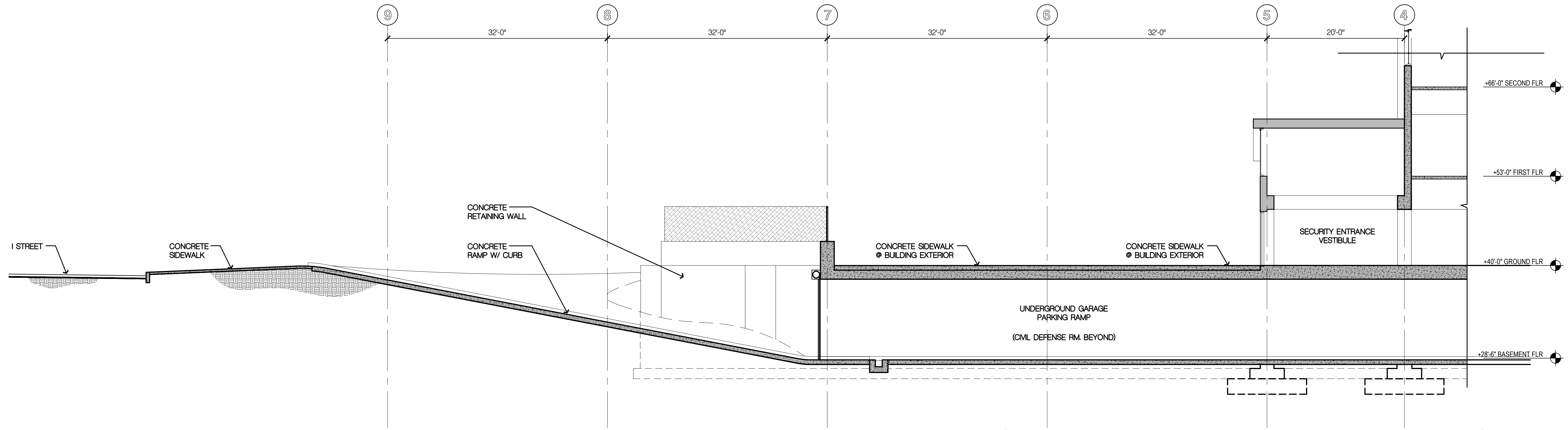
**SHEET TITLE**  
**EXISTING  
BUILDING SECTIONS**

**DRAWING STATUS**  
**CONSTRUCTION  
DOCUMENTS**

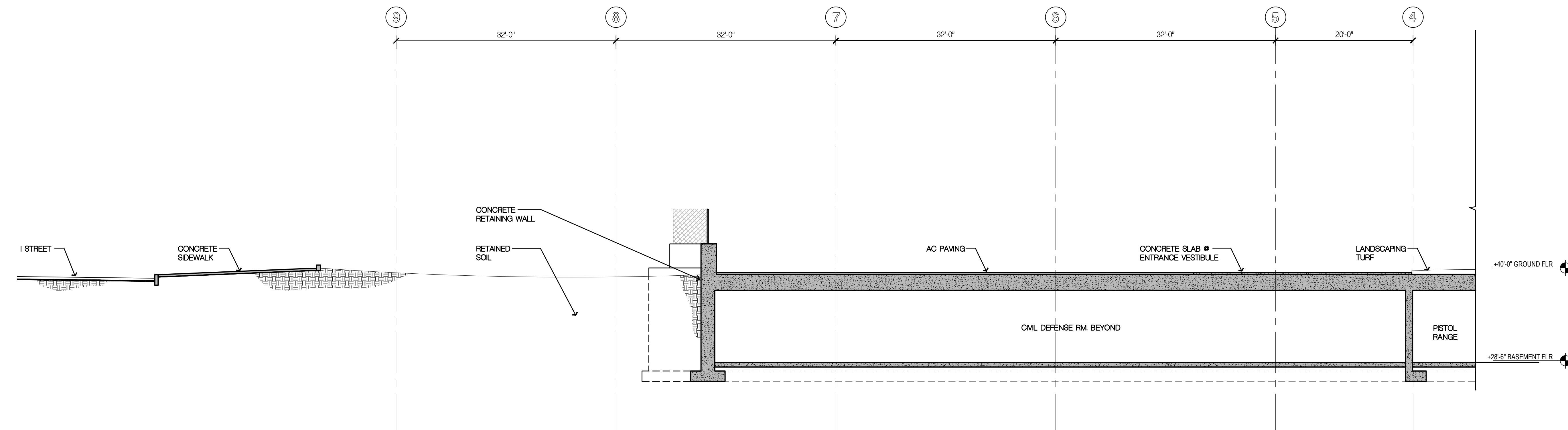
**REVISIONS**  
 Sym. Description By Date

<b>Drawn By</b>	CDS
<b>Checked By</b>	DRC
<b>Date Drawn</b>	2/15/2023
<b>Scale</b>	AS NOTED
<b>Job No.</b>	17-6430

**SHEET No.**  
**A401**



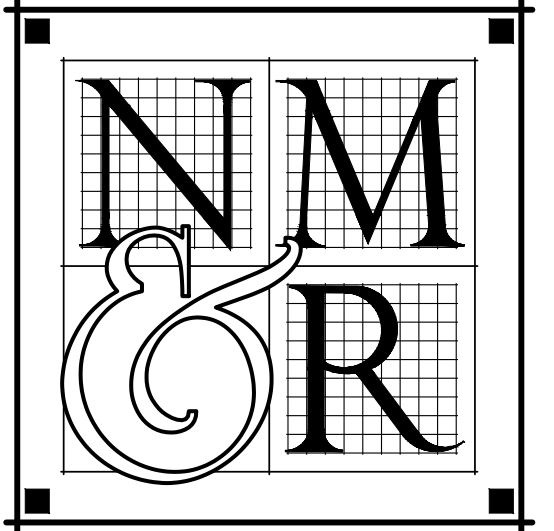
**3** **EXISTING BUILDING SECTION**  
 SCALE: 1/8" = 1'-0"



**4** **EXISTING BUILDING SECTION**  
 SCALE: 1/8" = 1'-0"

LogIn Name: Amy P.  
 Plot Date: March 06, 2023 - 2:37 pm  
 File Name: N:\Projects\000\04\02\01\17-6430 Humboldt County ADA Compliance\Printing\Drawings\CH-Sections\dwg  
 PEPS: N:\C:\HPROD\15 - NHC\CHPROJ\LOGO1.NHC\CHPROJ\TOPD1.NHC\CHPROJ\JOBFILES





**NICHOLS  
 MELBURG  
 &  
 ROSSETTO**  
 ARCHITECTS + ENGINEERS  
 300 KNOLLCREST DRIVE  
 REDDING, CA 96002  
 (530) 222-3300 (530) 222-3538 FAX  
 http://www.nmrdesign.com

LICENSE STAMPS



PROJECT NAME  
**4TH STREET  
 IMPROVEMENTS**  
 FOR  
**HUMBOLDT  
 COUNTY  
 COURTHOUSE**  
**825 5TH STREET  
 EUREKA, CALIFORNIA**

SHEET TITLE

INTERIOR ELEVATIONS

DRAWING STATUS  
**CONSTRUCTION  
 DOCUMENTS**

REVISIONS

Sym.	Description	By	Date

Drawn By	CD
Checked By	DRC
Date Drawn	2/15/2023
Scale	AS NOTED
Job No.	17-6430

SHEET No.

**A501**

### INTERIOR ELEVATION SHEET NOTES

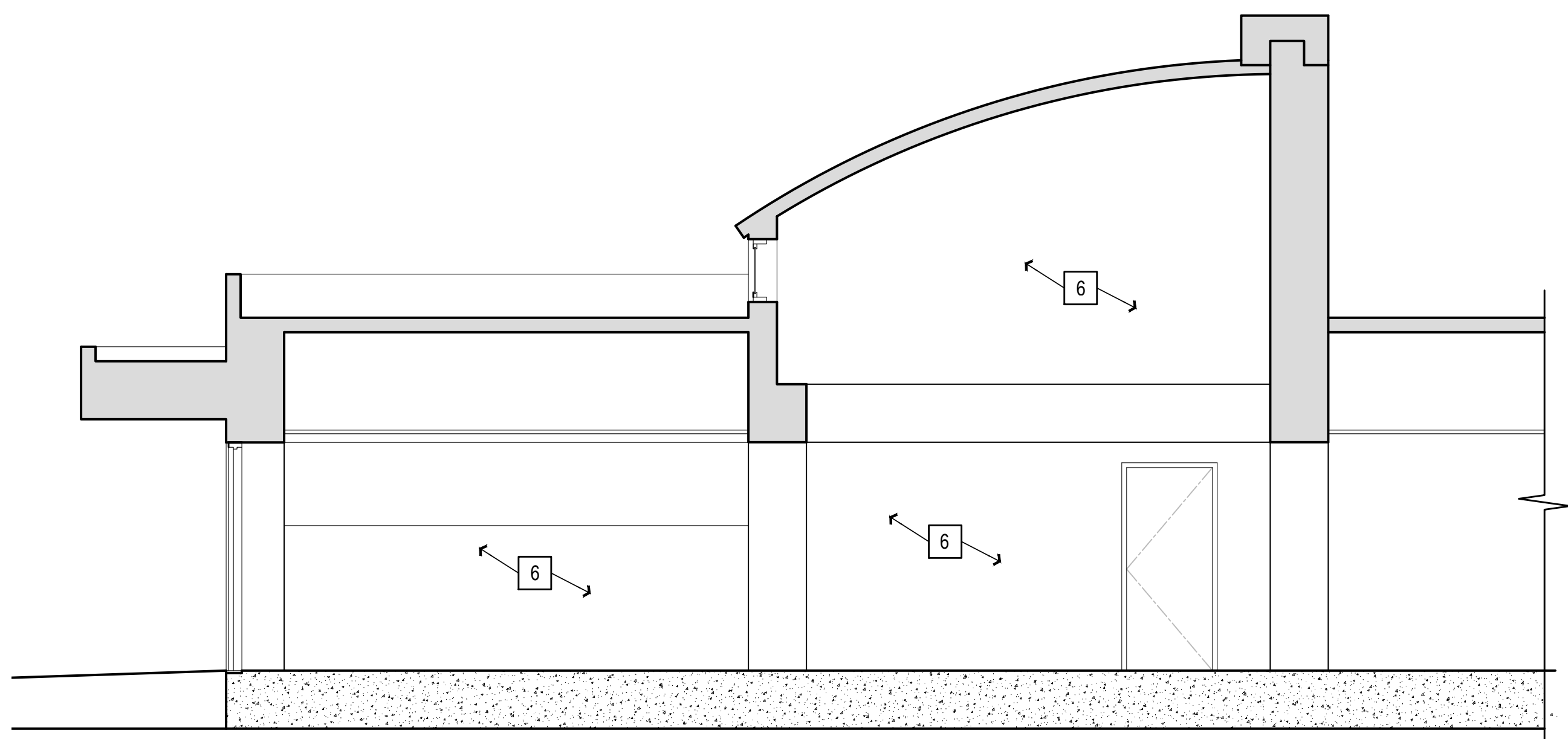
(ALL ITEMS ARE NEW UNLESS NOTED (E) OR EXISTING)

- 1 SLIDING DOORS WITH MOTION SENSOR. SEE MANUFACTURERS ASSEMBLY INSTRUCTIONS FOR ELECTRICAL POINT OF CONNECTION.
- 2 (E) WINDOW TO REMAIN.
- 3 INSTALL (E) ILLUMINATED EXIT SIGN AT NEW LOCATION.
- 4 INSTALL (E) ILLUMINATED EXIT SIGN.
- 5 AWNING WINDOW.
- 6 PAINT ALL CEILINGS, SOFFITS, WALLS.
- 7 INSTALL ELECTRICAL CONDUIT AND CONDUCTORS FOR MOTORIZED DOORS. REMOVE, REPLACE, AND REPAIR (E) GYPSUM BOARD TO CONCEAL NEW ELECTRICAL IN (E) SOFFIT AND WALL FRAMING.
- 8 CORE THROUGH CONCRETE FLOOR.

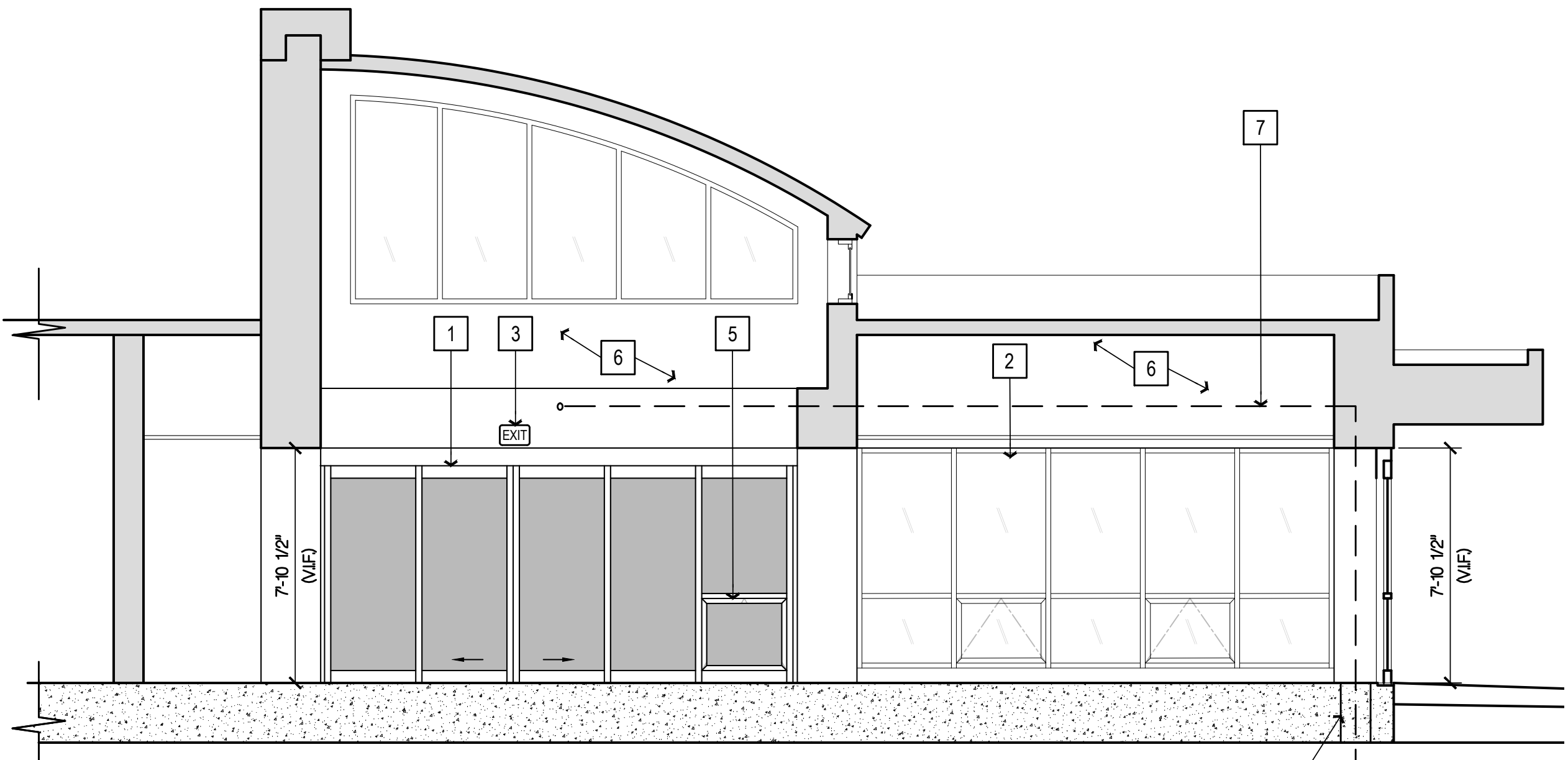
---

### INTERIOR ELEVATION GENERAL NOTES

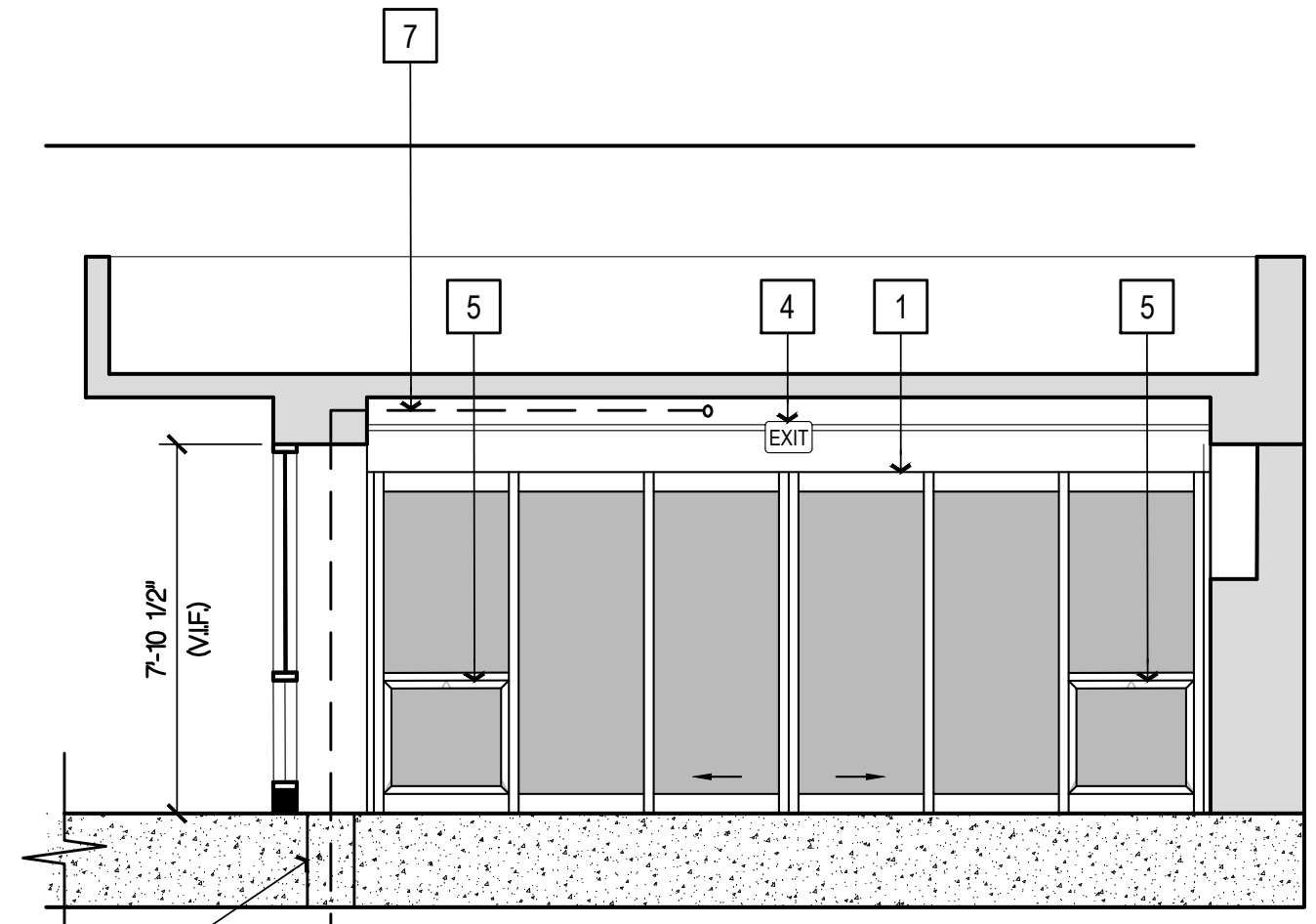
- 1 PAINT ALL GYPSUM BOARD WALLS, SOFFITS AND CEILINGS IN LOBBY 101.
- 2 CONCEAL ALL CONDUIT AND CONDUCTORS WITHIN THE EXISTING WALLS. CUT, PATCH AND REPAIR EXISTING GYPSUM BOARD TO CONCEAL THE NEW CONDUIT. SURFACE MOUNTED CONDUIT IS NOT ACCEPTABLE.
- 3 INSTALL CONTINUOUS ALUMINUM WINDOW STOP AT EXTERIOR SIDE OF ALL EXISTING AND NEW AWNING WINDOWS IN LOBBY 101 OPERABLE WINDOWS PROJECTING FROM WALLS WITH THEIR LEADING EDGE BETWEEN 27" AND 80" ABOVE THE FINISHED FLOOR SHALL PROTRUDE NO MORE THAN 4" MAXIMUM HORIZONTALLY INTO THE CIRCULATION PATH.



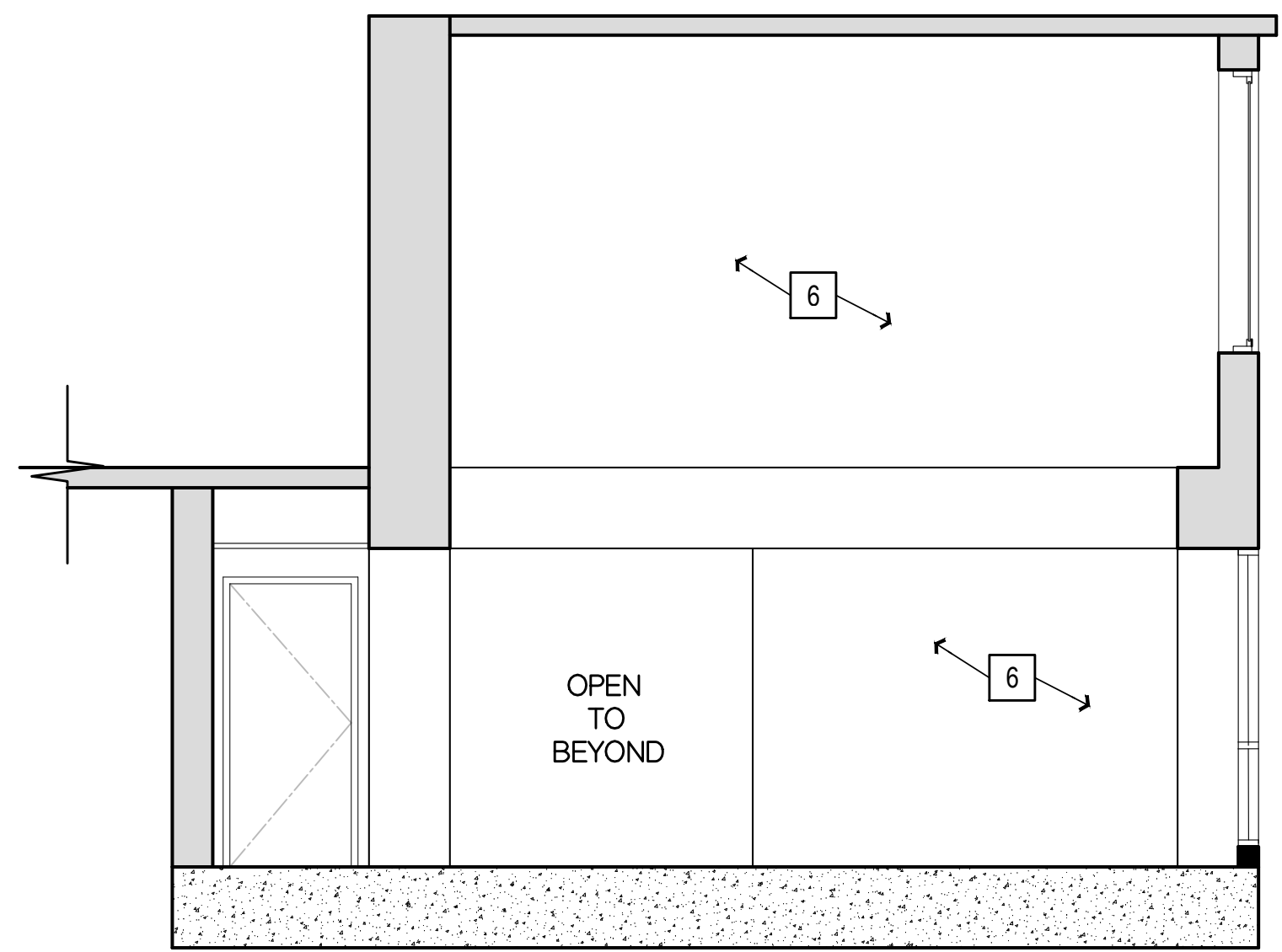
LOBBY 101  
EAST ELEVATION ②



LOBBY 101  
WEST ELEVATION ④



LOBBY 101  
NORTH ELEVATION ③



LOBBY 101  
SOUTH ELEVATION ③



