

Cultivation Area Verification (CAV)¹

Apps# 12072 / APN: 220-082-020

1) Amount and type applied for:

Application Outdoor Square Footage: 24,035 ϕ
Application Mixed Light Square Footage: 0

2) Enter amount of verified cultivation area:

Existing Outdoor Square Footage: 16,935 ϕ

Existing Mixed Light Square Footage: 0

3) Enter base year date and source (e.g. 10/27/15 - TerraServer or May 28, 2014 - Google Earth etc)

Base Year Date and Source: 9/18/15 Terra Server

4) Enter person performing verification:

Verified By: MCH-LACO

5) Enter date of verification (e.g. current date)

Date Verified: 6/29/18

6) Attach Evidence of Verification (e.g. TerraServer photos w/ polygons etc.)

7) Write "CAV" on the outside of the project file.

8) Please note any observed expansions, relocations, timber conversions, or ground disturbances:

Notes: Expansion of approximately 11,002 ϕ noted in 2017 imagery.

Existing 16,935

Paid \$6,000 of \$11,400 total

¹ (55.4.7 Definitions) "Cultivation Area" means the sum of the area(s) of cannabis cultivation as measured around the perimeter of each discrete area of cannabis cultivation on a single premises, as defined herein. Area of cannabis cultivation is the physical space where cannabis is grown and includes, but is not limited to, garden beds or plots, the exterior dimensions of hoop houses or green houses, and the total area of each of the pots and bags containing cannabis plants on the premises. The cultivation area shall include the maximum anticipated extent of all vegetative growth of cannabis plants to be grown on the premises.

Latitude: 40.0879 Longitude: -123.0000



Image Drawer

Date Range 📅 All Images

2016-05-28 (0.50m)	2016-02-07 (0.50m)	2015-10-26 (0.50m)	2015-09-18 (0.50m)
2015-09-18 (0.50m)	2015-11-15 (0.50m)	2013-08-23 (0.50m)	

Areas:
 A-C: 2,289 sf
 D-G: 3,017 sf
 H: 1,062 sf
 I: 3,768 sf
 J: 663 sf
 K: 5,236 sf
 Approximately
 16,035 sf existing
 cultivation 9/18/15



2015 1/3

Latitude: 40.0879 Longitude: -123.0000



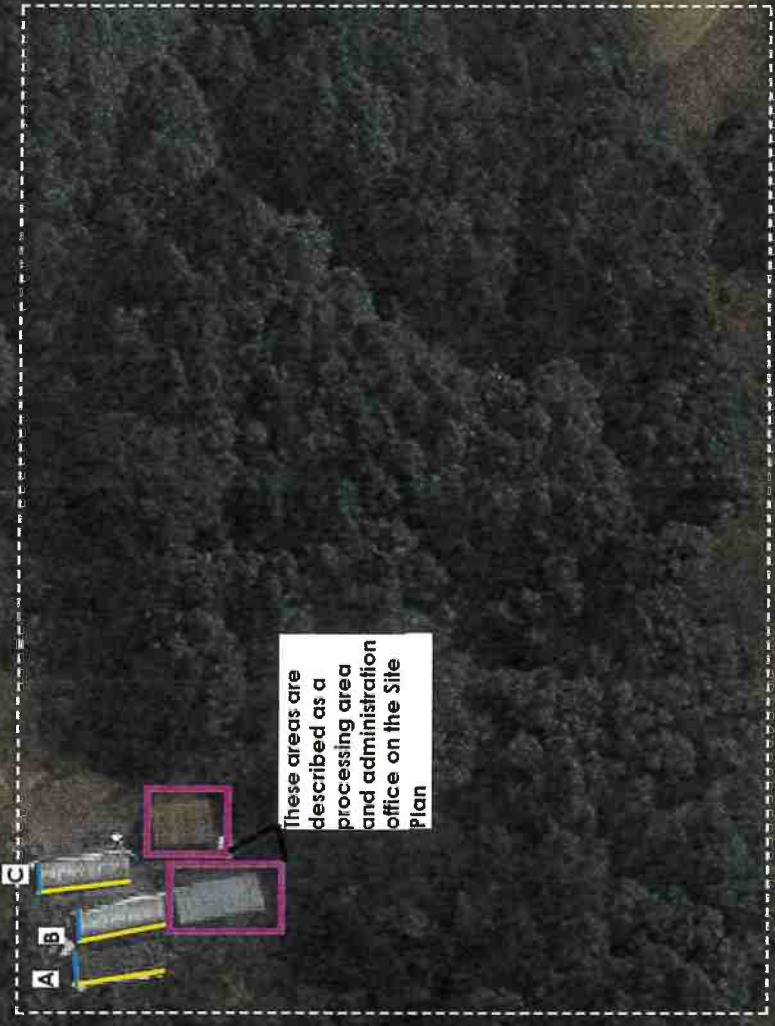
Image Drawer

Date Range All Images



A: 864 sf
B: 705 sf
C: 720 sf
D: 752 sf
E: 840 sf
F: 840 sf
G: 585 sf
 Approximately
 5,306 sf existing
 cultivation 9/18/15

These areas are
 described as a
 processing area
 and administration
 office on the Site
 Plan



2015 2/3

Latitude: 40.0879 Longitude: -123.0000

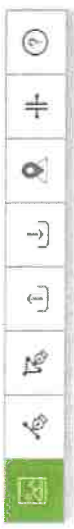


Image Drawer

Date Range All Images

- | | | | | | |
|--------------------|--------------------|--------------------|--------------------|--------------------|--|
| | | | | | |
| 2015-10-26 (0.50m) | 2015-10-26 (0.50m) | 2013-11-15 (0.50m) | 2013-08-23 (0.50m) | 2011-06-19 (0.50m) | |
| | | 2013-02-15 (0.50m) | | | |

H: 1,062 sf
I: 3,768 sf
J: 663 sf
K: 5,236 sf
 Approximately
 10,729 sf existing
 cultivation 9/18/15



2015 3/3

Latitude: 40.0879 Longitude: -123.0000



Image Drawer

Date Range All Images



A: 2,260 sf
B-E: 3,405 sf
F-J: 9,996 sf
K: 8,136 sf
L: 3,240 sf
Approximately
27,037 sf cultivation
6/14/17



2017 1/3

Latitude: 40.0879 Longitude: -123.0000

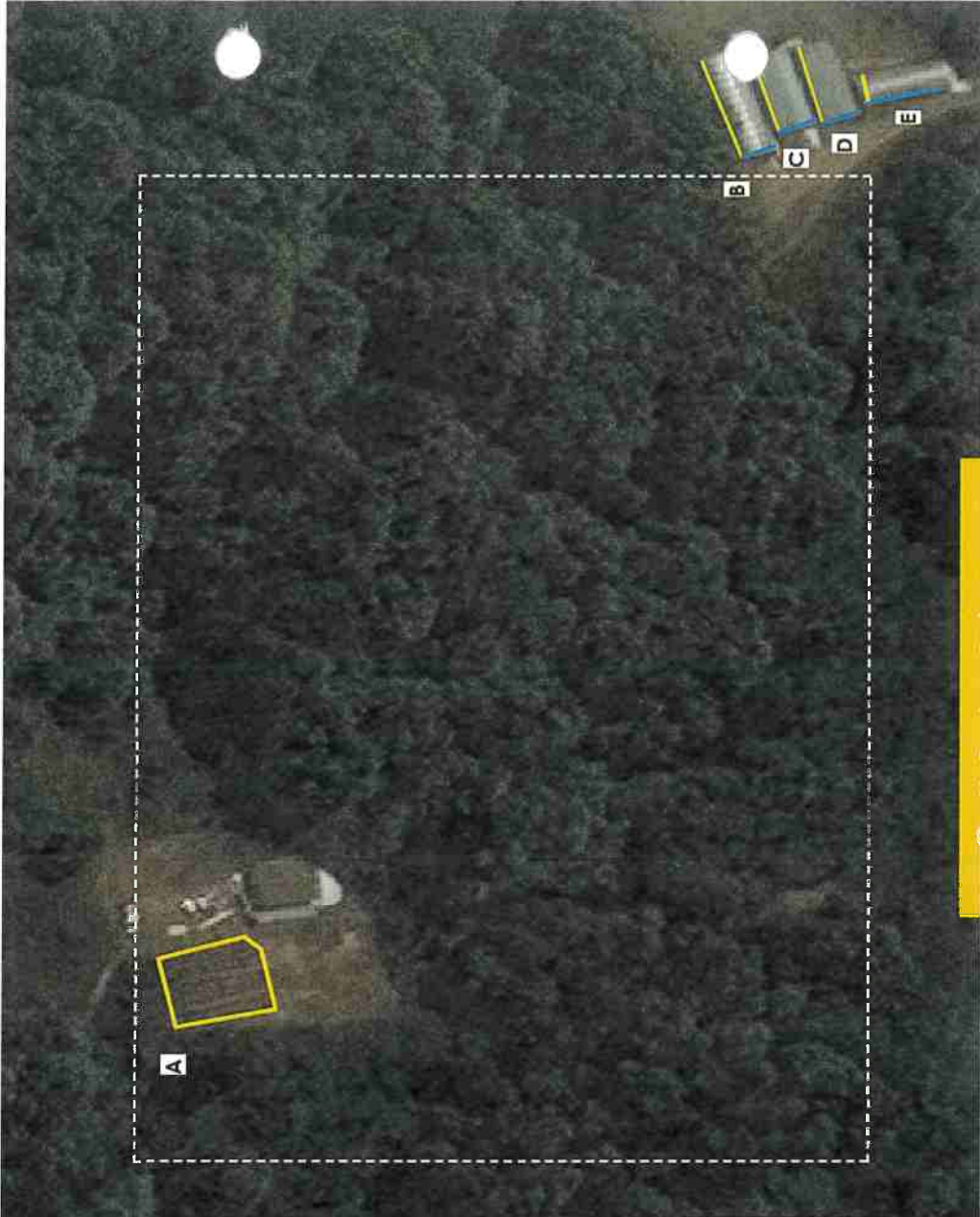


Image Drawer

Date Range: All Images



A: 2,260 sf
B: 1,140 sf
C: 840 sf
D: 840 sf
E: 585 sf
Approximately 5,665 sf cultivation
6/14/2017



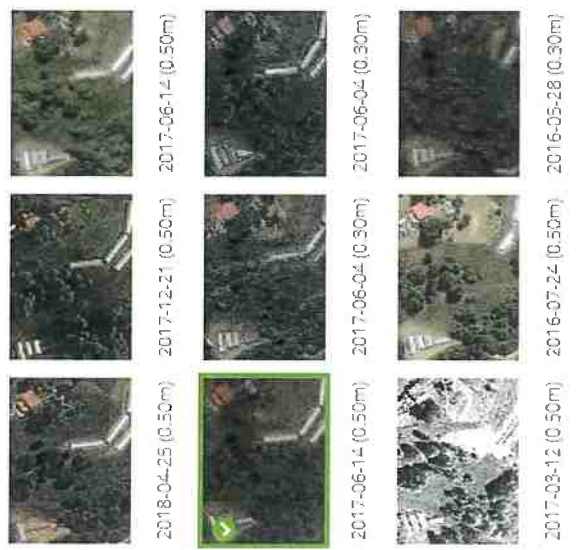
2017 2/3

Latitude: 40.0879 Longitude: -123.0000



Image Drawer

Date Range All Images



F: 1,764 sf
G: 2,090 sf
H: 1,900 sf
I: 2,020 sf
J: 2,222 sf
K: 8,136 sf
L: 3,240 sf
Approximately
21,372 sf cultivation



2017 3/3

Latitude: 40.08616019 Longitude: ...



LAT: 40.086228 N

LONG: -123.95644 W



Area Measurement

Border Color ○ Fill Color

Border Width 5



Units of Measurement:
Feet (ft)

Information

Number of Points	7
This Line	80.45 ft
Total Lines	224.21 ft
This Area	4181.45 ft ²
Total Area	4181.45 ft ²

Edit Draw

Delete Draw

No Purchase Options

Vicinity Map

Help & Support



VIEWER

PRODUCTS

SAMPLES

INDUSTRIES

FAQ

Chris Carroll

(1)

PRECISIONHAWK

DATAMATTER

TERRASERVER

Latitude: 40.08616019 Longitude: ...

LAT: 40.08635 N

LONG: -123.96917 W



Area Measurement

Border Color ■ Fill Color

Border Width: 5



Units of Measurement:

Feet (ft)

Information

Number of Points	1	9
This Line	1	19.49 ft
Total Lines	1	310.60 ft
This Area	1	5855.99 ft ²
Total Area	1	5855.99 ft ²

Edit Draw

Delete Draw

Click to start drawing shape.

Check Purchase Options →

Vicinity Map



Latitude: 40.08616019 Longitude: ...

LAT: 40.08645 N LONG: -123.96671 W

[Home](#) | [Map](#) | [Layers](#) | [Tools](#) | [Help](#)

Area Measurement

Border Color: Fill Color:

Border Width: 5

Unit of Measurement:

Information

Number of Points	:	6
This Line	:	22.93 ft
Total Lines	:	227.00 ft
This Area	:	5471.94 ft ²
Total Area	:	5471.94 ft ²

[Check Purchase Options](#) →

[Vicinity Map](#)



TERRA server
A Division of PrecisionHawk

Click to start drawing shape.

Latitude: 40.08616019 Longitude: ...



VIEWER

PRODUCTS

SAMPLES

INDUSTRIES

FAQ

Chris Carroll



LAT: 40.08612 N

LONG: -123.96832 W

Area Measurement

Border Color Fill Color

Border Width 5

Unit of Measurement:

Feet (ft)

Information

Number of Points	4
Perimeter Line	27.89 ft
Interior Lines	115.68 ft
Interior Area	1642.36 ft ²
Total Area	1642.36 ft ²

Edit Draw

Delete Draw

6 TerraServer, DigitalGlobe

Check Purchase Options →

Vicinity Map

Latitude: 40.08616019 Longitude: ...

LAT: 40.08631 N

LONG: -123.960531 W

Navigation icons: Home, Search, Map, Measure, Draw, Download, Help

Area Measurement

Border Color: ● Fill Color

Border Width: 5



Unit of Measurement:

Feet (ft)

Information

Number of Points	1	4
This Line	1	21.88 ft
Total Lines	1	81.40 ft
This Area	1	875.11 ft ²
Total Area	1	875.11 ft ²

Edit Draw

Delete Draw

Click to start drawing shape:

No Purchase Options

Vicinity Map

Latitude: 40.08616019 Longitude: ...



LAT: 40.086160 N

LONG: -123.963688 W

Area Measurement

Border Color ○ Fill Color

Border Width 5

Unit of Measurement

Feet (ft)

Information

Number of Points	4
This Line	35.27 ft
Total Lines	106.50 ft
This Area	1218.37 ft ²
Total Area	1218.37 ft ²

Edit Draw

Delete Draw

Latitude: 40.08616019 Longitude: ...



LAT: 40.08740 N

LONG: -123.96878 W



Area Measurement

Source: Solid Fill Color

Stroke Width: 5

Line Style: Solid

Feet (ft)

Formation

Number of Points	:	4
This Line	:	115.78 ft
Total Lines	:	273.95 ft
This Area	:	4823.84 ft ²
Total Area	:	4823.84 ft ²

Edit Draw

Delete Draw

Check Purchase Options →

Vicinity Map