

EXHIBIT "A"



## ArcGIS Web Map

Humboldt County Planning and Building Department

0 700 1,400 2,800 Feet

0 0.125 0.25 0.5 Miles

RF= 1:18,056

1 in = 1,505 ft



Printed: January 31, 2020

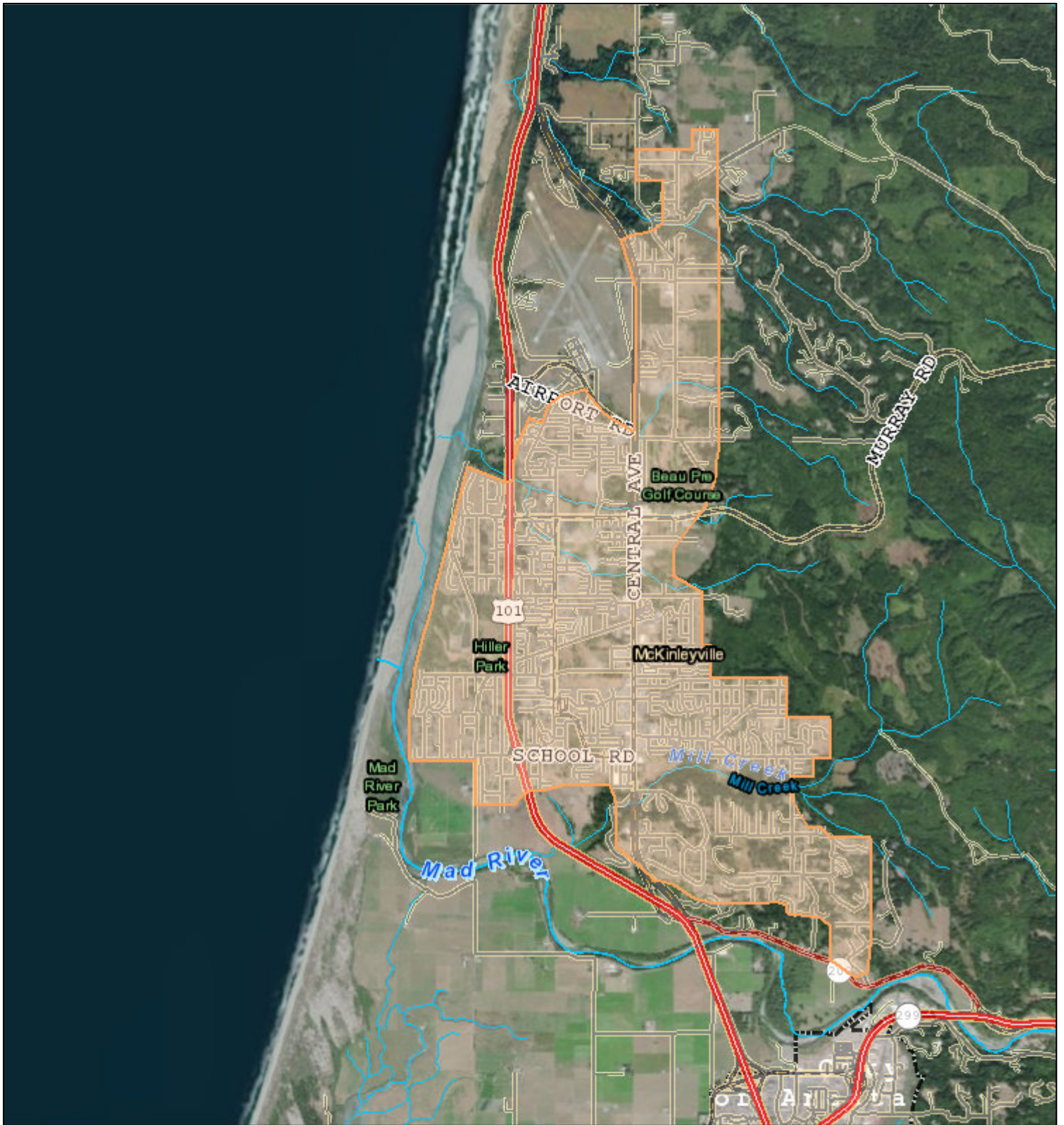
Web AppBuilder 2.0 for ArcGIS

### Map Disclaimer:

While every effort has been made to assure the accuracy of this information, it should be understood that it does not have the force & effect of law, rule, or regulation. Should any difference or error occur, the law will take precedence.

Source: Humboldt County GIS, Esri, HERE, Garmin, (c) OpenStreetMap contributors, and the GIS user community, Source: Esri, DigitalGlobe, GeoEye, Earthstar Geographics, CNES/Airbus DS, USDA, USGS, AeroGRID, IGN, and the GIS User Community

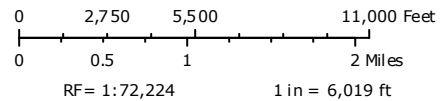
- : City Boundary
- : City Boundary (750K)
- : Counties



# Wildlife Svcs- Mckinleyville - Full Map

Humboldt County Planning and Building Department

- |                     |                           |                        |
|---------------------|---------------------------|------------------------|
| Highways and Roads  | — Private or Unclassified | — Intermittent         |
| Principal Arterials | — Major River or Stream   | — Subsurface           |
| — Minor Arterials   | <b>Blue Line Streams</b>  | — City Boundary        |
| — Major Collectors  | — Perennial 1-3           | — City Boundary (750K) |
| — Minor Collectors  | — Perennial >4            | — Counties             |
| — Local Roads       |                           |                        |



Printed: January 28, 2020

Web AppBuilder 2.0 for ArcGIS

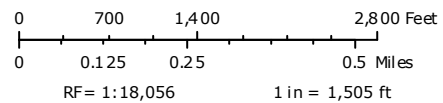
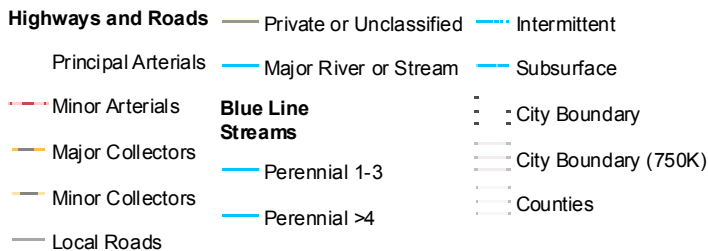
Map Disclaimer:  
While every effort has been made to assure the accuracy of this information, it should be understood that it does not have the force & effect of law, rule, or regulation. Should any difference or error occur, the law will take precedence.

Source: Humboldt County GIS, Esri, HERE, Garmin, (c) OpenStreetMap contributors, and the GIS user community, Source: Esri, DigitalGlobe, GeoEye, Earthstar Geographics, CNES/Airbus DS, USDA, USGS, AeroGRID, IGN, and the GIS User Community



## Wildlife Svcs- Mckinleyville

Humboldt County Planning and Building Department



Printed: January 28, 2020

Web AppBuilder 2.0 for ArcGIS

Map Disclaimer:  
While every effort has been made to assure the accuracy of this information, it should be understood that it does not have the force & effect of law, rule, or regulation. Should any difference or error occur, the law will take precedence.

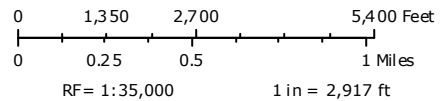
Source: Humboldt County GIS, Esri, HERE, Garmin, (c) OpenStreetMap contributors, and the GIS user community, Source: Esri, DigitalGlobe, GeoEye, Earthstar Geographics, CNES/Airbus DS, USDA, USGS, AeroGRID, IGN, and the GIS User Community



# Wildlife Svcs- Mckinleyville - Central

Humboldt County Planning and Building Department

- |                     |                           |                        |
|---------------------|---------------------------|------------------------|
| Highways and Roads  | — Private or Unclassified | — Intermittent         |
| Principal Arterials | — Major River or Stream   | — Subsurface           |
| Minor Arterials     | <b>Blue Line Streams</b>  | — City Boundary        |
| Major Collectors    | — Perennial 1-3           | — City Boundary (750K) |
| Minor Collectors    | — Perennial >4            | — Counties             |
| Local Roads         |                           |                        |



Printed: January 28, 2020

Web AppBuilder 2.0 for ArcGIS

Map Disclaimer:

While every effort has been made to assure the accuracy of this information, it should be understood that it does not have the force & effect of law, rule, or regulation. Should any difference or error occur, the law will take precedence.

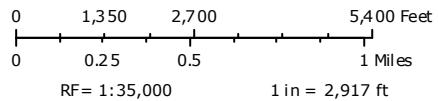
Source: Humboldt County GIS, Esri, HERE, Garmin, (c) OpenStreetMap contributors, and the GIS user community, Source: Esri, DigitalGlobe, GeoEye, Earthstar Geographics, CNES/Airbus DS, USDA, USGS, AeroGRID, IGN, and the GIS User Community



## Wildlife Svcs- Mckinleyville - South

Humboldt County Planning and Building Department

- |                     |                           |                        |
|---------------------|---------------------------|------------------------|
| Highways and Roads  | — Private or Unclassified | — Intermittent         |
| Principal Arterials | — Major River or Stream   | — Subsurface           |
| Minor Arterials     | <b>Blue Line Streams</b>  | — City Boundary        |
| Major Collectors    | — Perennial 1-3           | — City Boundary (750K) |
| Minor Collectors    | — Perennial >4            | — Counties             |
| Local Roads         |                           |                        |



Printed: January 28, 2020

Web AppBuilder 2.0 for ArcGIS

Map Disclaimer:

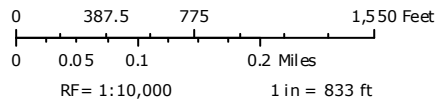
While every effort has been made to assure the accuracy of this information, it should be understood that it does not have the force & effect of law, rule, or regulation. Should any difference or error occur, the law will take precedence.

Source: Humboldt County GIS, Esri, HERE, Garmin, (c) OpenStreetMap contributors, and the GIS user community, Source: Esri, DigitalGlobe, GeoEye, Earthstar Geographics, CNES/Airbus DS, USDA, USGS, AeroGRID, IGN, and the GIS User Community



## Wildlife Svcs- Willow Creek

Humboldt County Planning and Building Department



- |                           |                           |                          |                     |
|---------------------------|---------------------------|--------------------------|---------------------|
| <b>Highways and Roads</b> | — Local Roads             | <b>Blue Line Streams</b> | — Subsurface        |
| — Principal Arterials     | — Private or Unclassified | — Perennial 1-3          | - - - City Boundary |
| - - - Minor Arterials     | — Major River or Stream   | — Perennial >4           | - - - Counties      |
| — Major Collectors        |                           | — Intermittent           |                     |
| — Minor Collectors        |                           |                          |                     |

Printed: January 28, 2020 Web AppBuilder 2.0 for ArcGIS  
 Map Disclaimer:  
 While every effort has been made to assure the accuracy of this information, it should be understood that it does not have the force & effect of law, rule, or regulation. Should any difference or error occur, the law will take precedence.  
 Source: Humboldt County GIS, Esri, HERE, Garmin, (c) OpenStreetMap contributors, and the GIS user community, Source: Esri, DigitalGlobe, GeoEye, Earthstar Geographics, CNES/Airbus DS, USDA, USGS, AeroGRID, IGN, and the GIS User Community



# Humboldt County Web GIS

Planning & Building Department

Search: Parcel APN or Location

Layer List

- Operational Layers
- Critical Facilities, Roads and Streams
- Jurisdiction Boundaries & Land Use
- Planning Layers
- Jurisdiction Boundaries
- Housing Areas
- Historic Layers
- Background Layers
- Humboldt County Parcels (7.4) APN Labels
- Humboldt County Parcels (7.4)
- Hazards
- Coastal Zones
- Natural Resources
- App State
- Demographics, Economics and Mobility

City of Blue Lake

Blue Lake Rancheria

Fargot Park

Powers Creek

Mad River

Palmer Creek

Blue Lake

Blue Lake

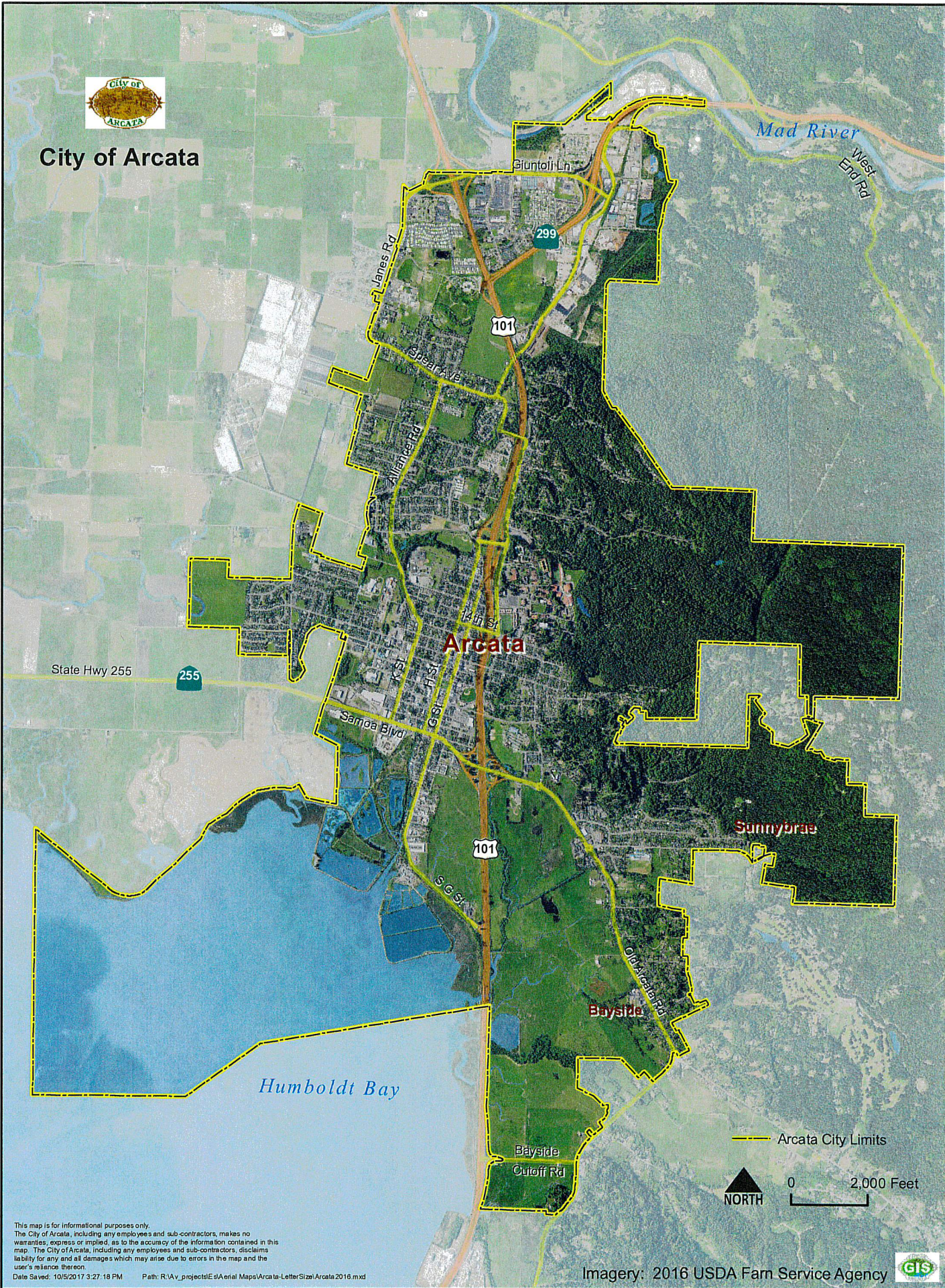
Scale: 0, 0.1, 0.2 mi

Coordinates: 40.8064, -124.0669 Degrees





# City of Arcata



This map is for informational purposes only. The City of Arcata, including any employees and sub-contractors, makes no warranties, express or implied, as to the accuracy of the information contained in this map. The City of Arcata, including any employees and sub-contractors, disclaims liability for any and all damages which may arise due to errors in the map and the user's reliance thereon.

Date Saved: 10/6/2017 3:27:18 PM Path: R:\A\_v\_projects\Eis\Aerial Maps\Arcata-LetterSize\Arcata 2016.mxd

Imagery: 2016 USDA Farm Service Agency

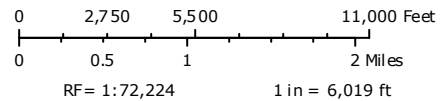




## Greater Eureka Area

Humboldt County Planning and Building Department

- |                     |                           |                |
|---------------------|---------------------------|----------------|
| Highways and Roads  | — Private or Unclassified | — Intermittent |
| Principal Arterials | — Major River or Stream   | — Subsurface   |
| Minor Arterials     | <b>Blue Line Streams</b>  |                |
| Major Collectors    | — Perennial 1-3           |                |
| Minor Collectors    | — Perennial >4            |                |
| Local Roads         |                           |                |



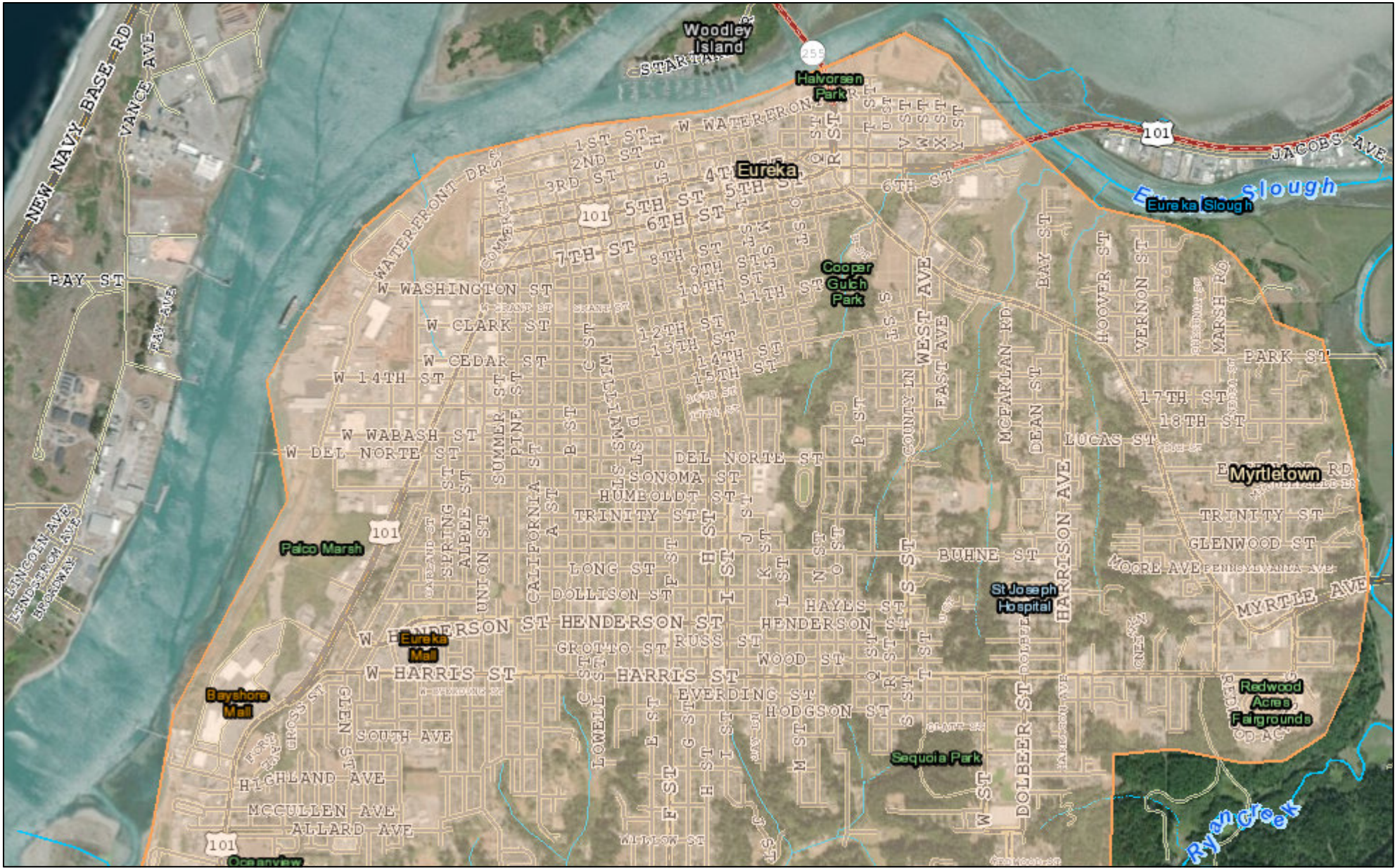
Printed: March 2, 2020

Web AppBuilder 2.0 for ArcGIS

Map Disclaimer:

While every effort has been made to assure the accuracy of this information, it should be understood that it does not have the force & effect of law, rule, or regulation. Should any difference or error occur, the law will take precedence.

Source: Humboldt County GIS, Esri, HERE, Garmin, (c) OpenStreetMap contributors, and the GIS user community, Source: Esri, DigitalGlobe, GeoEye, Earthstar Geographics, CNES/Airbus DS, USDA, USGS, AeroGRID, IGN, and the GIS User Community



# Eureka North

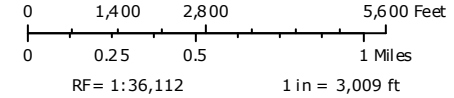
Humboldt County Planning and Building Department

Printed: March 2, 2020

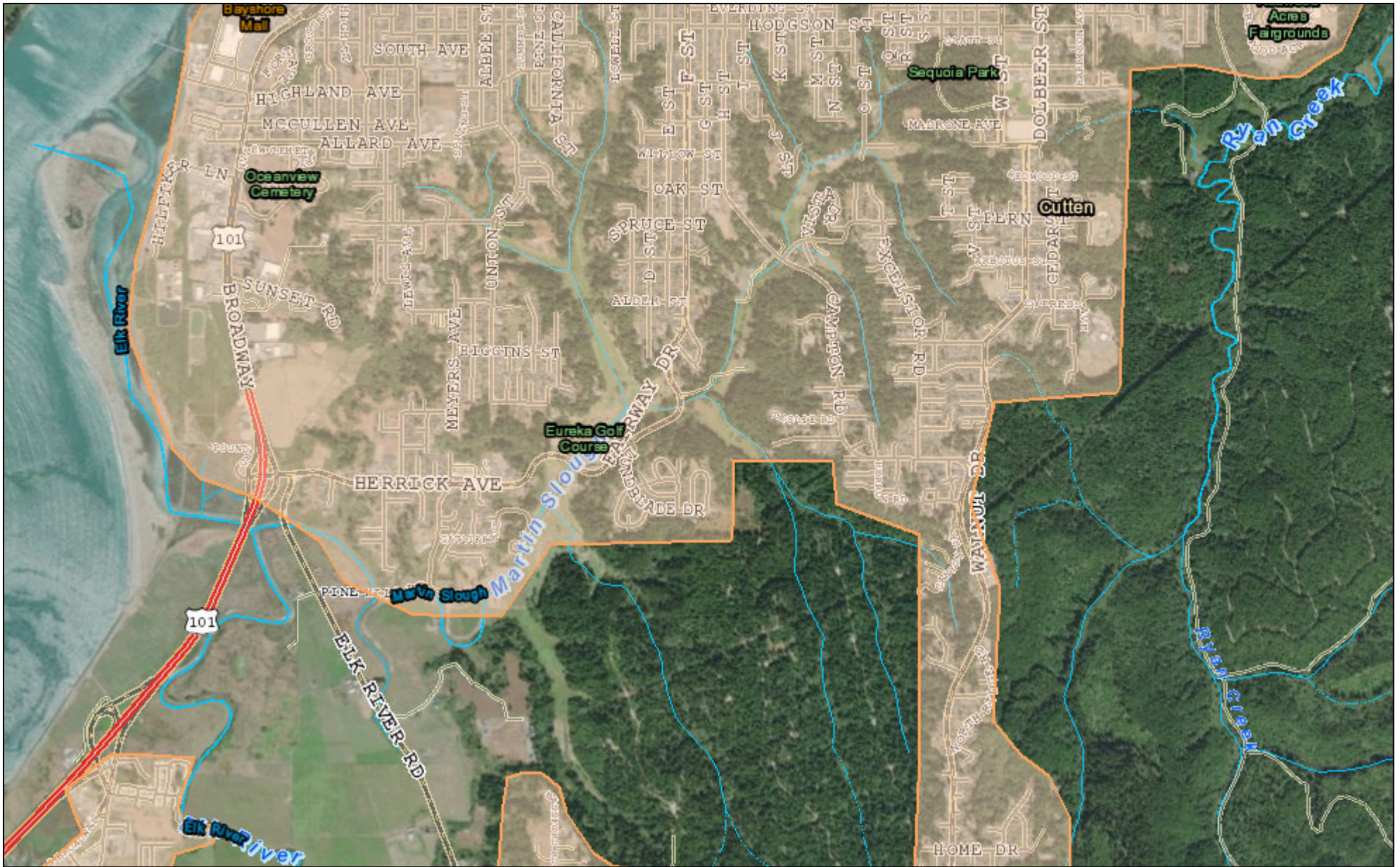
Web AppBuilder 2.0 for ArcGIS

Map Disclaimer:  
While every effort has been made to assure the accuracy of this information, it should be understood that it does not have the force & effect of law, rule, or regulation. Should any difference or error occur, the law will take precedence.

- |                           |                           |                |
|---------------------------|---------------------------|----------------|
| <b>Highways and Roads</b> | — Private or Unclassified | — Intermittent |
| Principal Arterials       | Major River or Stream     | Subsurface     |
| Minor Arterials           | <b>Blue Line Streams</b>  |                |
| Major Collectors          | Perennial 1-3             |                |
| Minor Collectors          | Perennial >4              |                |
| Local Roads               |                           |                |



Sources: Humboldt County GIS  
Esri, HERE, Garmin, (c) OpenStreetMap contributors, and the GIS user community  
Source: Esri, DigitalGlobe, GeoEye, Earthstar Geographics, CNES/Airbus DS, USDA, USGS, AeroGRID, IGN, and the GIS User Community



## Eureka South

Humboldt County Planning and Building Department

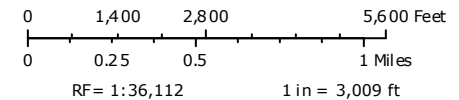
Printed: March 2, 2020

Web AppBuilder 2.0 for ArcGIS

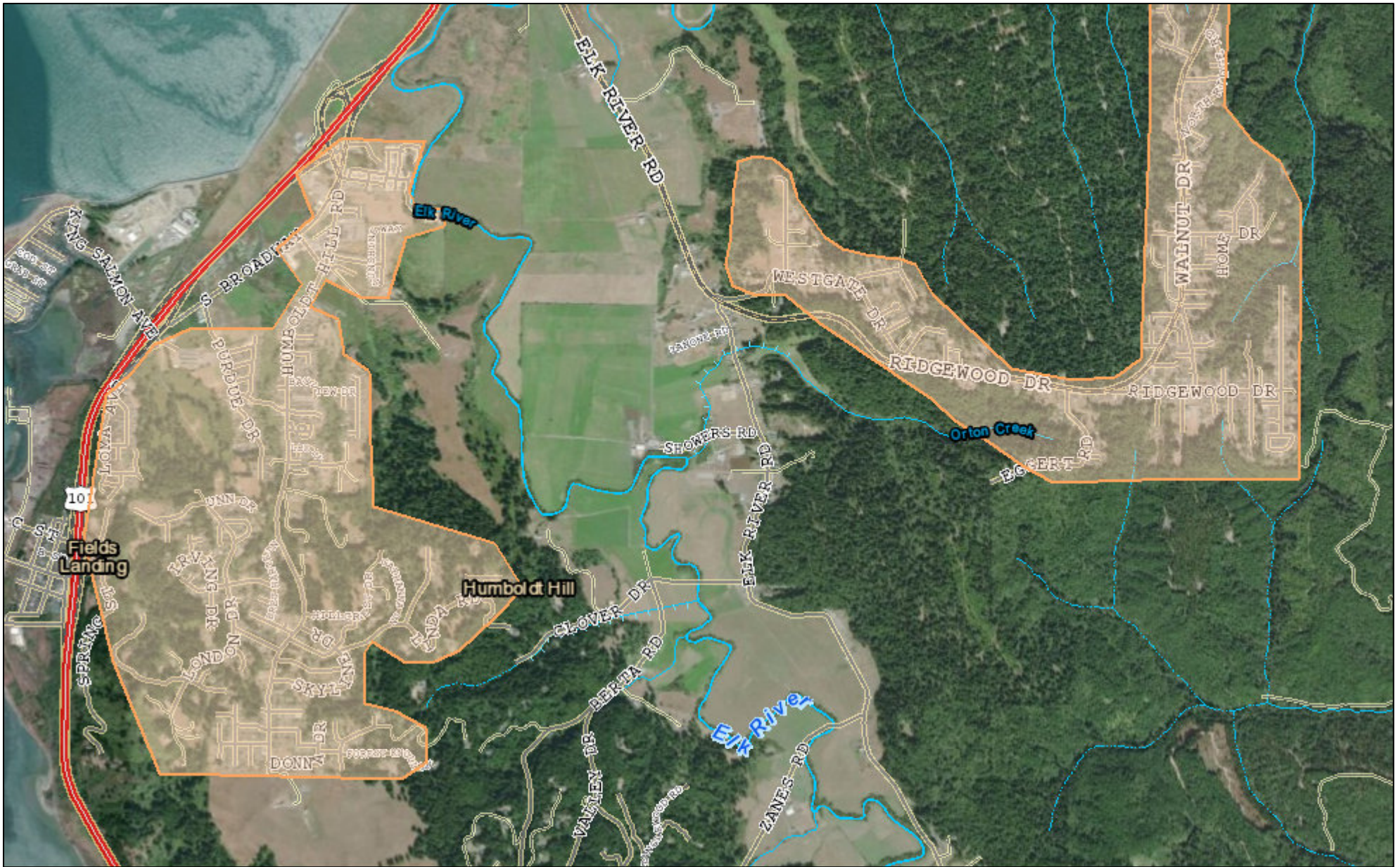
**Map Disclaimer:**

While every effort has been made to assure the accuracy of this information, it should be understood that it does not have the force & effect of law, rule, or regulation. Should any difference or error occur, the law will take precedence.

- |                           |                           |                |
|---------------------------|---------------------------|----------------|
| <b>Highways and Roads</b> | — Private or Unclassified | — Intermittent |
| Principal Arterials       | Major River or Stream     | Subsurface     |
| Minor Arterials           | <b>Blue Line Streams</b>  |                |
| Major Collectors          | Perennial 1-3             | Perennial >4   |
| Minor Collectors          |                           |                |
| Local Roads               |                           |                |



Sources: Humboldt County GIS  
 Esri, HERE, Garmin, (c) OpenStreetMap contributors, and the GIS user community  
 Source: Esri, DigitalGlobe, GeoEye, Earthstar Geographics, CNES/Airbus DS, USDA, USGS, AeroGRID, IGN, and the GIS User Community



## Humboldt Hill

Humboldt County Planning and Building Department

Printed: March 2, 2020

Web AppBuilder 2.0 for ArcGIS

**Map Disclaimer:**

While every effort has been made to assure the accuracy of this information, it should be understood that it does not have the force & effect of law, rule, or regulation. Should any difference or error occur, the law will take precedence.

**Highways and Roads**

Principal Arterials

Minor Arterials

Major Collectors

Minor Collectors

Local Roads

Private or Unclassified

**Blue Line Streams**

Perennial 1-3

Perennial >4

Intermittent

Major River or Stream

Subsurface

0 1,400 2,800 5,600 Feet

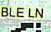
0 0.25 0.5 1 Miles

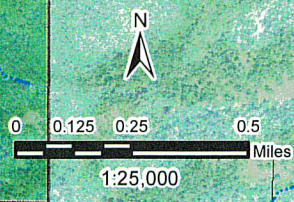
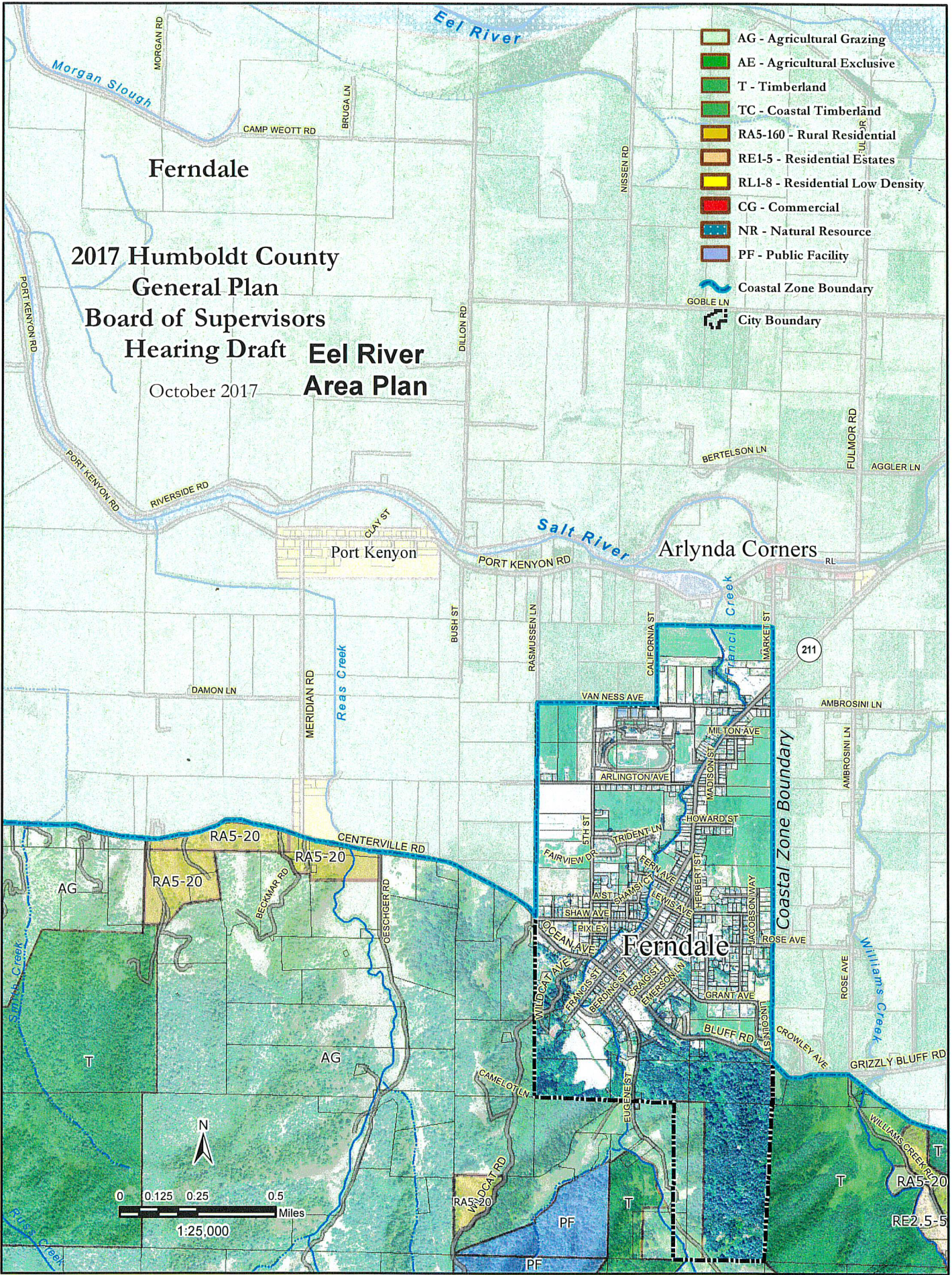
RF= 1:36,112 1 in = 3,009 ft



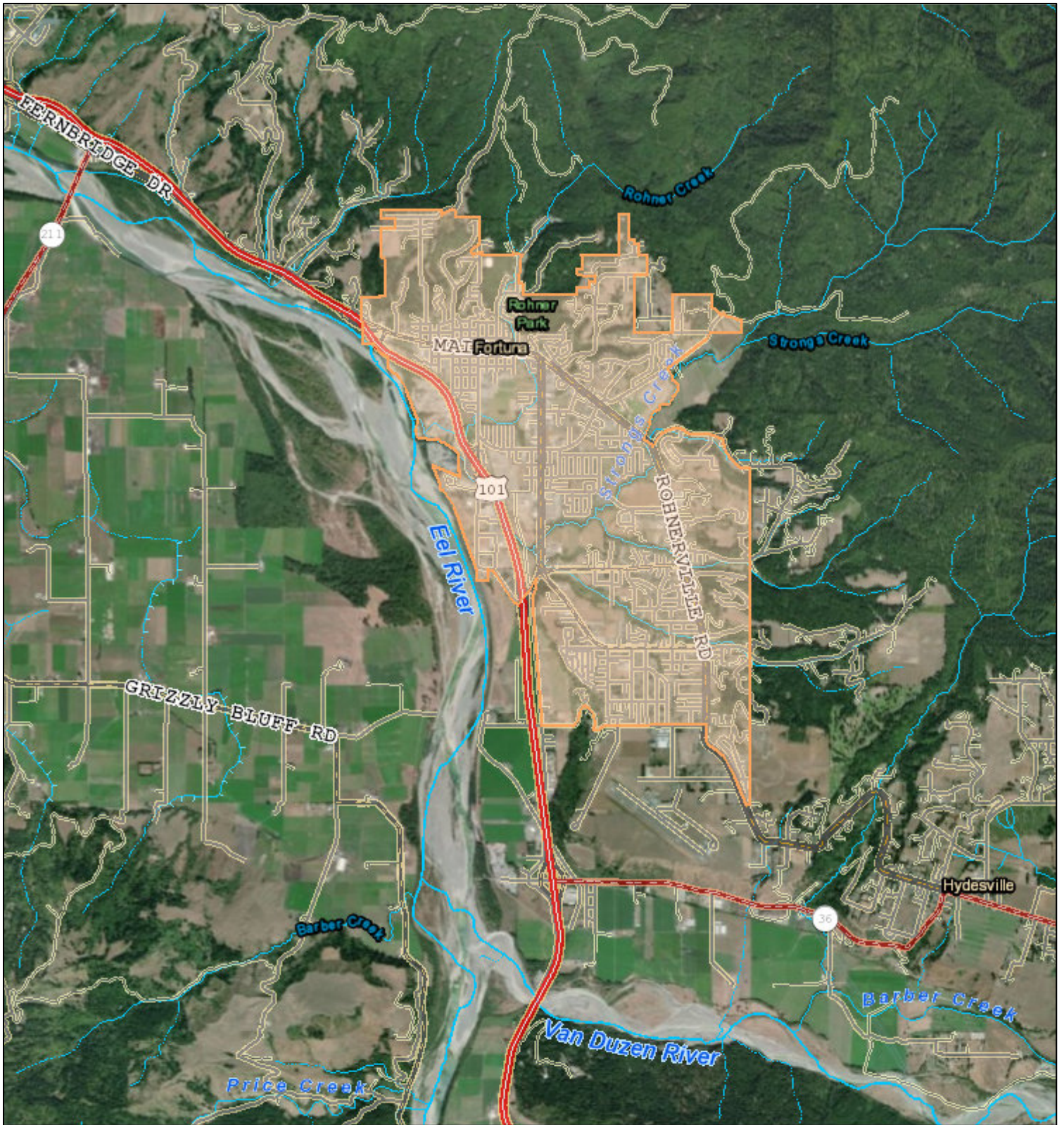
Sources: Humboldt County GIS  
 Esri, HERE, Garmin, (c) OpenStreetMap contributors, and the GIS user community  
 Source: Esri, DigitalGlobe, GeoEye, Earthstar Geographics, CNES/Airbus DS, USDA, USGS, AeroGRID, IGN, and the GIS User Community

2017 Humboldt County  
 General Plan  
 Board of Supervisors  
 Hearing Draft **Eel River  
 Area Plan**  
 October 2017

-  AG - Agricultural Grazing
-  AE - Agricultural Exclusive
-  T - Timberland
-  TC - Coastal Timberland
-  RA5-160 - Rural Residential
-  RE1-5 - Residential Estates
-  RL1-8 - Residential Low Density
-  CG - Commercial
-  NR - Natural Resource
-  PF - Public Facility
-  Coastal Zone Boundary
-  City Boundary



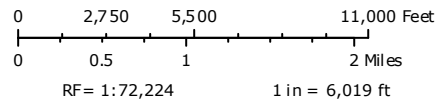
RE2.5-5



## Fortuna

Humboldt County Planning and Building Department

- |                           |                          |
|---------------------------|--------------------------|
| — Private or Unclassified | — Intermittent           |
| — Principal Arterials     | — Major River or Stream  |
| — Minor Arterials         | — Subsurface             |
| — Major Collectors        | <b>Blue Line Streams</b> |
| — Minor Collectors        | — Perennial 1-3          |
| — Local Roads             | — Perennial >4           |



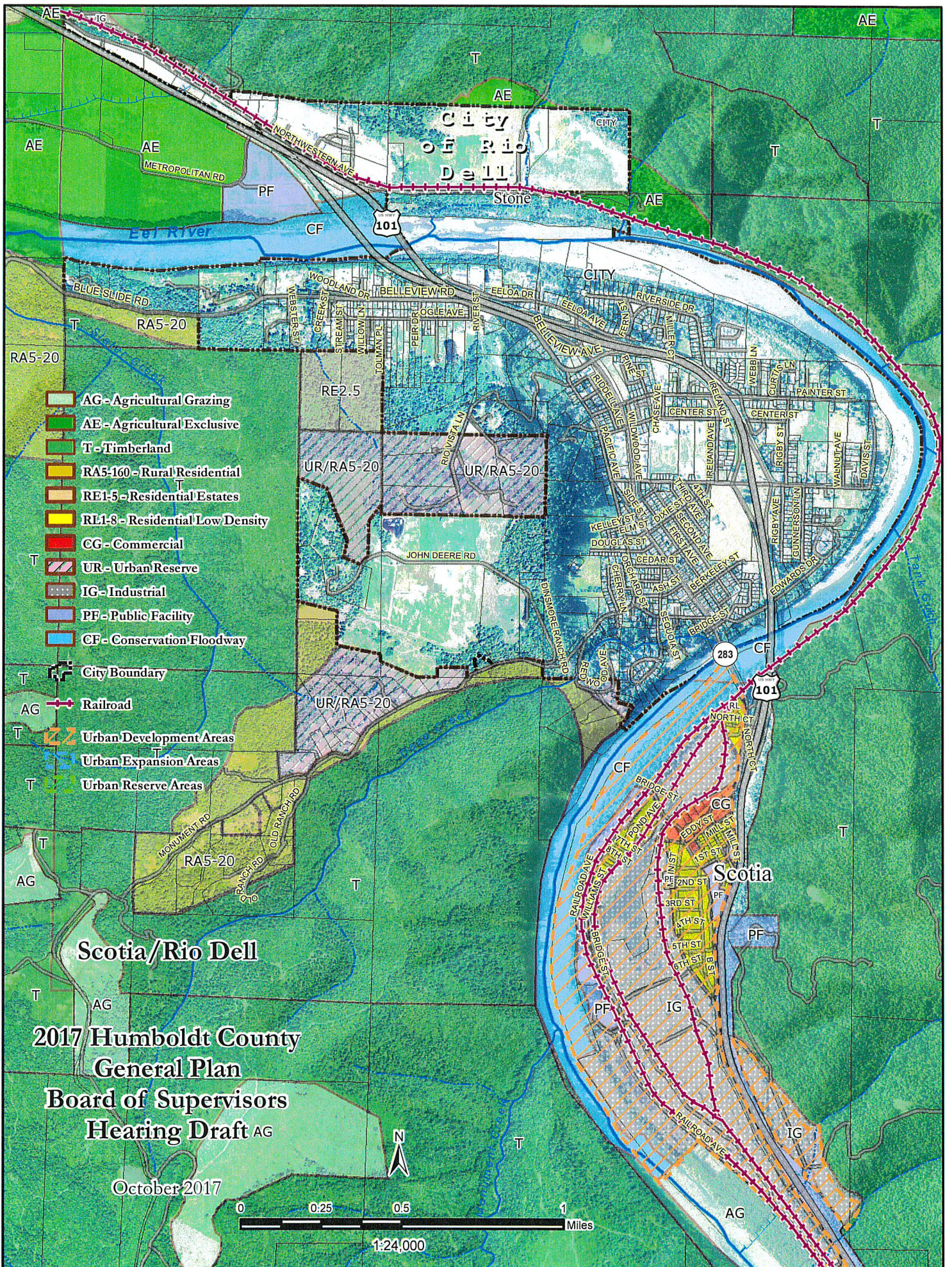
Printed: March 3, 2020

Web AppBuilder 2.0 for ArcGIS

**Map Disclaimer:**

While every effort has been made to assure the accuracy of this information, it should be understood that it does not have the force & effect of law, rule, or regulation. Should any difference or error occur, the law will take precedence.

Source: Humboldt County GIS, Esri, HERE, Garmin, (c) OpenStreetMap contributors, and the GIS user community, Source: Esri, DigitalGlobe, GeoEye, Earthstar Geographics, CNES/Airbus DS, USDA, USGS, AeroGRID, IGN, and the GIS User Community



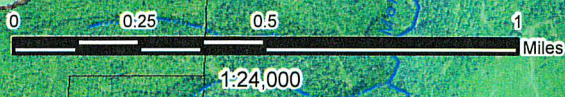
- AG - Agricultural Grazing
- AE - Agricultural Exclusive
- T - Timberland
- RA5-160 - Rural Residential
- RE1-5 - Residential Estates
- RL1-8 - Residential Low Density
- CG - Commercial
- UR - Urban Reserve
- IG - Industrial
- PF - Public Facility
- CF - Conservation Floodway

- City Boundary
- Railroad
- Urban Development Areas
- Urban Expansion Areas
- Urban Reserve Areas

**Scotia/Río Dell**

**2017 Humboldt County  
General Plan  
Board of Supervisors  
Hearing Draft**

October 2017







# Wildlife Svcs - Garberville

Humboldt County Planning and Building Department

Printed: January 28, 2020

Web AppBuilder 2.0 for ArcGIS

**Map Disclaimer:**

While every effort has been made to assure the accuracy of this information, it should be understood that it does not have the force & effect of law, rule, or regulation. Should any difference or error occur, the law will take precedence.

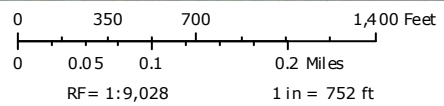
**Highways and Roads**

- Principal Arterials
- Minor Arterials
- Major Collectors
- Minor Collectors
- Local Roads
- Private or Unclassified
- Major River or Stream

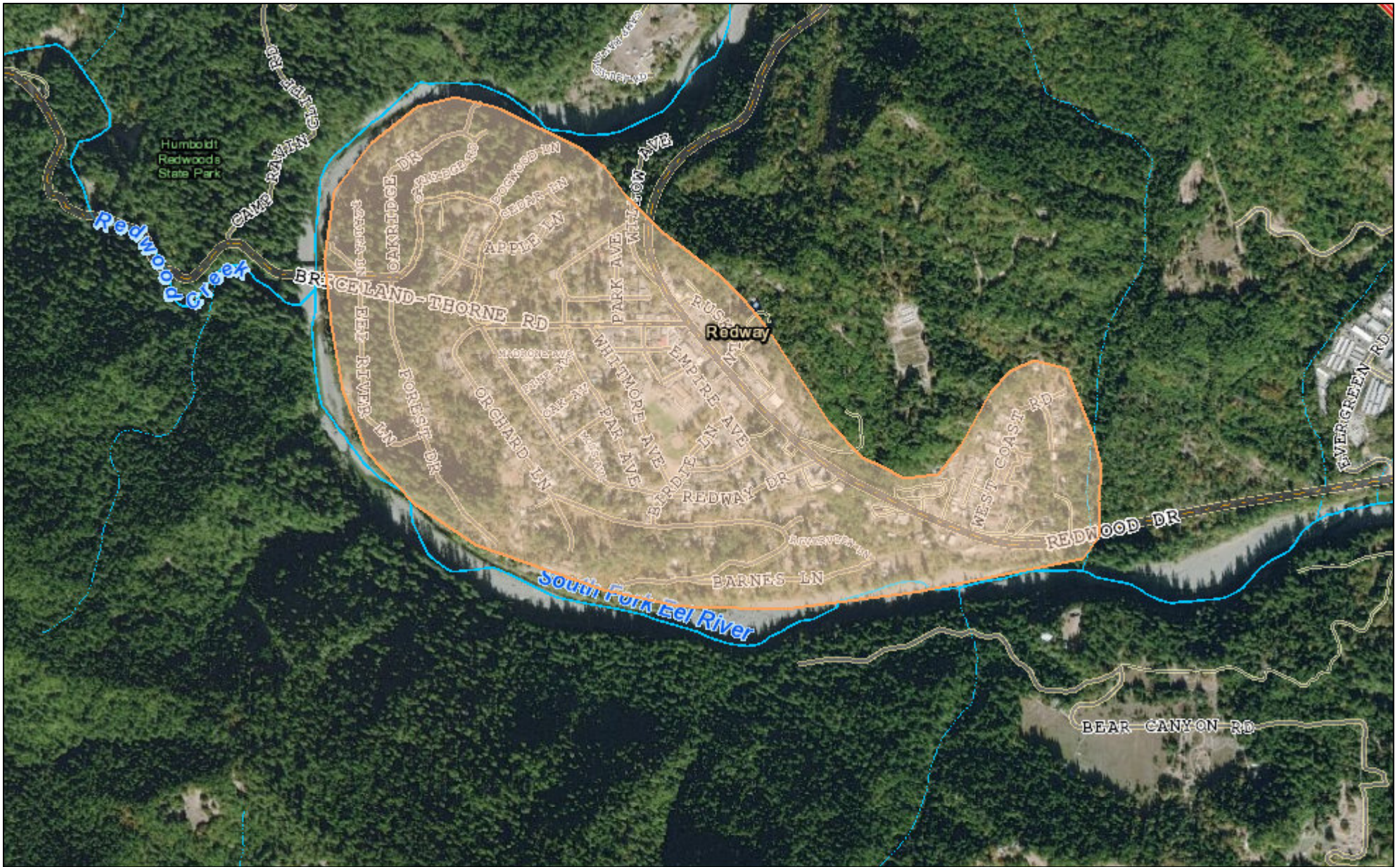
**Blue Line Streams**

- Perennial 1-3
- Perennial >4
- Intermittent

- Subsurface
- City Boundary
- Counties



Sources: Humboldt County GIS  
 Esri, HERE, Garmin, (c) OpenStreetMap contributors, and the GIS user community  
 Source: Esri, DigitalGlobe, GeoEye, Earthstar Geographics, CNES/Airbus DS, USDA, USGS, AeroGRID, IGN, and the GIS User Community



## Wildlife Svcs - Redway

Humboldt County Planning and Building Department

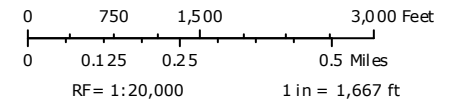
Printed: January 28, 2020

Web AppBuilder 2.0 for ArcGIS

**Map Disclaimer:**

While every effort has been made to assure the accuracy of this information, it should be understood that it does not have the force & effect of law, rule, or regulation. Should any difference or error occur, the law will take precedence.

- |                           |                           |                  |
|---------------------------|---------------------------|------------------|
| <b>Highways and Roads</b> | — Private or Unclassified | --- Intermittent |
| Principal Arterials       | Major River or Stream     | Subsurface       |
| Minor Arterials           | <b>Blue Line Streams</b>  |                  |
| Major Collectors          | Perennial 1-3             |                  |
| Minor Collectors          | Perennial >4              |                  |
| Local Roads               |                           |                  |



Sources: Humboldt County GIS  
 Esri, HERE, Garmin, (c) OpenStreetMap contributors, and the GIS user community  
 Source: Esri, DigitalGlobe, GeoEye, Earthstar Geographics, CNES/Airbus DS, USDA, USGS, AeroGRID, IGN, and the GIS User Community