



COUNTY ADMINISTRATIVE OFFICE

ADA Compliance Team

COUNTY OF HUMBOLDT

825 5th Street, Suite 112, Eureka, CA 95501-1153

Telephone (844) 365-0352 Fax (707) 445-7299

ada@co.humboldt.ca.us

ADA Access Barrier Assessment Report

For

McKinleyville Library

1606 Pickett Road

McKinleyville, CA

Last Updated 11/1/2023

Leased

Barrier Count: 137

Open: 114

Closed: 14

Safe Harbor: 9

County Open: 54

Owner Open: 61



COUNTY ADMINISTRATIVE OFFICE
ADA Compliance Team
COUNTY OF HUMBOLDT

825 5th Street, Suite 112, Eureka, CA 95501-1153

Telephone (844) 365-0352 Fax (707) 445-7299

ada@co.humboldt.ca.us

Barrier Status Definitions

Open- A barrier labeled “Open” requires remediation in order to meet the requirements set in the 1991 Americans with Disabilities Act (“ADA”), the 2010 ADA Standards for Accessible Design (“ADAS”) and/or California Building Code Chapter 11B requirements.

Closed- A barrier labeled “Closed” means no further remediation is required to meet ADAS and/or California Building Code Chapter 11B compliance.

Exception- A barrier labeled “Exception” means that a code exception may apply to the barrier but may need to be remediated during future renovation projects depending on the requirements of the particular exception. Consult a licensed architect or Certified Access Specialist (“CASP”) for more information.

Safe Harbor- A barrier labeled “Safe Harbor” means that the barrier met the requirements of the 1991 ADA Standards and was constructed prior to and does not currently meet the 2010 ADAS and may not require remediation until future building renovation projects take place. Consult a licensed architect or CASp for more information.

Program Access- A barrier labeled “Program Access” means the county program has found a way to provide equal facilitation of services and that even though the barrier remains, remediation is not required at this time. When the program changes the use of the space, a remodel of the space occurs, and/or an employee accommodation is required, “Program Access” will be removed and the barrier will be “Open” until remediated.

Priorities for Accessible Facilities

The checklist follows the four priorities in the Department of Justice ADA title III regulations. These priorities are equally applicable to state and local government facilities.

Priority 1 - Accessible approach and entrance

Priority 2 - Access to goods and services

Priority 3 - Access to public toilet rooms

Priority 4 - Access to other items such as water fountains and public telephones

ADA Requirements for Altering Facilities

All alterations that could affect the usability of a facility must be made in an accessible manner to the maximum extent feasible. For example, if during renovations a doorway is being relocated, the new doorway must be wide enough to meet the new construction standard for accessibility.

When alterations are made to a primary function area, such as the lobby of a bank or the dining area of a cafeteria, an accessible path of travel to the altered area must also be provided.

The bathrooms, telephones, and drinking fountains serving that area must also be made accessible. These additional accessibility alterations are only required to the extent that the added accessibility costs do not exceed 20% of the cost of the original alteration. Elevators are generally not required in facilities under three stories or with fewer than 3,000 square feet per floor, unless the building is a shopping center or mall; the professional office of a health care provider; a terminal, depot, or other public transit station; or an airport passenger terminal.

See the 2010 ADA Standards for Accessible Design for more information regarding alterations:
<https://www.ada.gov/law-and-regs/design-standards/2010-stds/>

BARRIER DATA RECORDS

Field Date:	8/17/2017	Report Date:	10/6/2017	Barrier #:	1
Facility:	McKinleyville Library - 1606 Pickett Road, McKinleyville				
Location:	Exterior - Shared Walkway to Facility Entrances				
Official Responsible:	Owner				
Consent Decree:	No	Paragraph:	M.51	Dwg:	N/A
Barrier Area:	Accessible Route - Exterior		Remediation: Required		
Barrier Type:	Running Slope - Existing (5.0% - 8.2%)				



Barrier Description:	Accessible route running slope exceeds 5.0% (5.0% - 8.2%)
----------------------	---

Code References:	CBC 11B-403.3 and 2010 ADAS 403.3
------------------	-----------------------------------

As Built Description:	5.3% running slope
-----------------------	--------------------

Proposed Solution:	Provide handrails with wheelguide on both sides of ramp, and required landings. Where drop exceeds 30", provide guardrail.
--------------------	--

As-Built Meas:	13	Quantity:	LF	Cost Estimate:	\$1,625.00	BSR:	1 Necessary
----------------	----	-----------	----	----------------	------------	------	-------------

X Coordinate:	-124.099668022245	Y Coordinate:	40.9443469997495	Z Coordinate:	43.3885119999999
---------------	-------------------	---------------	------------------	---------------	------------------

Implementation:	Priority	1	Phase		Date		Status	Open
-----------------	----------	---	-------	--	------	--	--------	------

Notes:	
--------	--

Field Date:	8/17/2017	Report Date:	10/6/2017	Barrier #:	2
Facility:	McKinleyville Library - 1606 Pickett Road, McKinleyville				
Location:	Exterior - Shared Walkway to Facility Entrances				
Official Responsible:	Owner				
Consent Decree:	No	Paragraph:	M.51	Dwg:	N/A
Barrier Area:	Accessible Route - Exterior		Remediation: Required		
Barrier Type:	Cross Slope - Existing (3.1% to 4.0%)				



Barrier Description:	Cross slope exceeds 2.0% (3.1% to 4.0%)
----------------------	---

Code References:	CBC 11B-403.3 and 2010 ADAS 403.3
------------------	-----------------------------------

As Built Description:	3.4% cross slope
-----------------------	------------------

Proposed Solution:	Demolish existing and construct new route
--------------------	---

As-Built Meas:	99	Quantity:	LF	Cost Estimate:	\$12,375.00	BSR:	3 Hindrance
----------------	----	-----------	----	----------------	-------------	------	-------------

X Coordinate:	-124.099680008366	Y Coordinate:	40.9443119633942	Z Coordinate:	43.2544359999999
---------------	-------------------	---------------	------------------	---------------	------------------

Implementation:	Priority	1	Phase		Date		Status	Open
-----------------	----------	---	-------	--	------	--	--------	------

Notes:	
--------	--

Field Date:	8/17/2017	Report Date:	10/6/2017	Barrier #:	3
Facility:	McKinleyville Library - 1606 Pickett Road, McKinleyville				
Location:	Exterior - Parking Lot				
Official Responsible:	Karen Clower, ADA Coordinator				
Consent Decree:	No	Paragraph:	M.51	Dwg:	N/A
Barrier Area:	Parking	Remediation:	Required		
Barrier Type:	Tow-Away Sign				



Barrier Description:	No tow-away sign provided at lot entry or accessible stalls
----------------------	---

Code References:	CBC 11B-502.8
------------------	---------------

As Built Description:	No sign provided. 16 total stalls with 2 identified as van accessible
-----------------------	---

Proposed Solution:	Provide compliant sign
--------------------	------------------------

As-Built Meas:	1	Quantity:	EACH	Cost Estimate:	\$250.00	BSR:	2 Recommended
----------------	---	-----------	------	----------------	----------	------	---------------

X Coordinate:	-124.099550	Y Coordinate:	40.944145	Z Coordinate:	43.3077049999999
---------------	-------------	---------------	-----------	---------------	------------------

Implementation:	Priority	1	Phase		Date		Status	Open
-----------------	----------	---	-------	--	------	--	--------	------

Notes:	
--------	--

Field Date:	8/17/2017	Report Date:	10/6/2017	Barrier #:	4A
Facility:	McKinleyville Library - 1606 Pickett Road, McKinleyville				
Location:	Exterior - Parking Lot				
Official Responsible:	Karen Clower, ADA Coordinator				
Consent Decree:	No	Paragraph:	M.51	Dwg:	N/A
Barrier Area:	Parking	Remediation:	Required		
Barrier Type:	Accessible Stall Sign - Fine Sign				



Barrier Description:	An additional sign or info below the ISA does not state "Minimum Fine \$250."
----------------------	---

Code References:	CBC 11B-502.6.2
------------------	-----------------

As Built Description:	No fine sign provided at Van Accessible Stall 1
-----------------------	---

Proposed Solution:	Provide required sign
--------------------	-----------------------

As-Built Meas:	1	Quantity:	EACH	Cost Estimate:	\$150.00	BSR:	3 Hindrance
----------------	---	-----------	------	----------------	----------	------	-------------

X Coordinate:	-124.09960700199	Y Coordinate:	40.9441259689629	Z Coordinate:	43.3077049999999
---------------	------------------	---------------	------------------	---------------	------------------

Implementation:	Priority	1	Phase		Date		Status	Open
-----------------	----------	---	-------	--	------	--	--------	------

Notes:	
--------	--

Field Date: 8/17/2017 Report Date: 10/6/2017 Barrier #: 4B

Facility: McKinleyville Library - 1606 Pickett Road, McKinleyville

Location: Exterior - Parking Lot

Official Responsible: Karen Clower, ADA Coordinator

Consent Decree: No Paragraph: M.51 Dwg: N/A

Barrier Area: Parking Remediation: Required

Barrier Type: Accessible Stall Aisle - Cross-hatching



Barrier Description: Access aisle not cross-hatched with hatched lines striped at 36" on center

Code References: CBC 11B-502.3.3 and ADAS 502.3.3

As Built Description: 30-1/2" OC. Access aisle lacks compliant cross-hatched striping at Van Accessible Stall 1

Proposed Solution: Restripe access aisle

As-Built Meas: 1 Quantity: EACH Cost Estimate: \$450.00 BSR: 3 Hindrance

X Coordinate: -124.09960700199 Y Coordinate: 40.9441259689629 Z Coordinate: 43.3077049999999

Implementation: Priority 1 Phase Date Status Open

Notes:

Field Date: 8/17/2017 Report Date: 10/6/2017 Barrier #: 4C

Facility: McKinleyville Library - 1606 Pickett Road, McKinleyville

Location: Exterior - Parking Lot

Official Responsible: Karen Clower, ADA Coordinator

Consent Decree: No Paragraph: M.51 Dwg: N/A

Barrier Area: Parking Remediation: Required

Barrier Type: Accessible Stall Aisle - NO PARKING Lettering



Barrier Description: Access aisle lacks sign stating "NO PARKING" with min. 12" high letters contrasting with stall surface

Code References: CBC 11B-502.3.3

As Built Description: Access aisle lacks contrasting lettering min. 12" high stating "NO PARKING" at Van Accessible Stall 1

Proposed Solution: Provide required pavement sign at bottom of access aisle

As-Built Meas: 1 Quantity: EACH Cost Estimate: \$150.00 BSR: 3 Hindrance

X Coordinate: -124.09960700199 Y Coordinate: 40.9441259689629 Z Coordinate: 43.3077049999999

Implementation: Priority 1 Phase Date Status Open

Notes:

Field Date:	8/17/2017	Report Date:	10/6/2017	Barrier #:	5A
Facility:	McKinleyville Library - 1606 Pickett Road, McKinleyville				
Location:	Exterior - Parking Lot				
Official Responsible:	Karen Clower, ADA Coordinator				
Consent Decree:	No	Paragraph:	M.51	Dwg:	N/A
Barrier Area:	Parking	Remediation:	Required		
Barrier Type:	Accessible Stall Sign - Fine Sign				



Barrier Description:	An additional sign or info below the ISA does not state "Minimum Fine \$250."
----------------------	---

Code References:	CBC 11B-502.6.2
------------------	-----------------

As Built Description:	No fine sign provided at Van Accessible Stall 2
-----------------------	---

Proposed Solution:	Provide required sign
--------------------	-----------------------

As-Built Meas:	1	Quantity:	EACH	Cost Estimate:	\$150.00	BSR:	3 Hindrance
----------------	---	-----------	------	----------------	----------	------	-------------

X Coordinate:	-124.099658969789	Y Coordinate:	40.9442040044814	Z Coordinate:	41.893452
---------------	-------------------	---------------	------------------	---------------	-----------

Implementation:	Priority	1	Phase		Date		Status	Open
-----------------	----------	---	-------	--	------	--	--------	------

Notes:	
--------	--

Field Date:	8/17/2017	Report Date:	10/6/2017	Barrier #:	5B
Facility:	McKinleyville Library - 1606 Pickett Road, McKinleyville				
Location:	Exterior - Parking Lot				
Official Responsible:	Karen Clower, ADA Coordinator				
Consent Decree:	No	Paragraph:	M.51	Dwg:	N/A
Barrier Area:	Parking	Remediation:	Required		
Barrier Type:	Van Accessible Stall Sign				



Barrier Description:	No sign stating "Van Accessible" posted at front of stall
----------------------	---

Code References:	CBC 11B-502.6 and 2010 ADAS 502.6
------------------	-----------------------------------

As Built Description:	Sign provided on stall that is not van accessible. Stall requires access aisle on passenger's side, not driver's side at Van Accessible Stall 2
-----------------------	---

Proposed Solution:	Remove "van accessible" sign
--------------------	------------------------------

As-Built Meas:	1	Quantity:	EACH	Cost Estimate:	\$250.00	BSR:	2 Recommended
----------------	---	-----------	------	----------------	----------	------	---------------

X Coordinate:	-124.099658969789	Y Coordinate:	40.9442040044814	Z Coordinate:	41.893452
---------------	-------------------	---------------	------------------	---------------	-----------

Implementation:	Priority	1	Phase		Date		Status	Open
-----------------	----------	---	-------	--	------	--	--------	------

Notes:	
--------	--

Field Date: 8/17/2017 Report Date: 10/6/2017 Barrier #: 6

Facility: McKinleyville Library - 1606 Pickett Road, McKinleyville

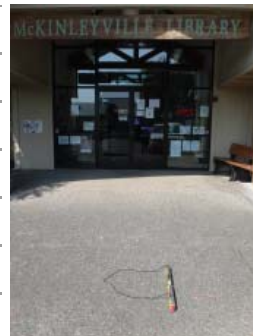
Location: Exterior - Walkway to Facility Entrance

Official Responsible: Owner

Consent Decree: No Paragraph: M.51 Dwg: N/A

Barrier Area: Accessible Route - Exterior Remediation: Required

Barrier Type: Turning Space - 360 Degree Turn (Level)



Barrier Description: Circular turning space identified with a change in level of more than 1:48 (2.0%)

Code References: CBC 11B-304.2 and 2010 ADAS 304.2

As Built Description: 2.5% slope in landing at change of direction from accessible parking stall aisle

Proposed Solution: Alter floor or ground surface to comply

As-Built Meas: 25 Quantity: SF Cost Estimate: \$3,125.00 BSR: 2 Recommended

X Coordinate: -124.099732981994 Y Coordinate: 40.9440979734063 Z Coordinate: 43.0755199999999

Implementation: Priority 1 Phase Date Status Open

Notes:

Field Date: 8/17/2017 Report Date: 10/6/2017 Barrier #: 7

Facility: McKinleyville Library - 1606 Pickett Road, McKinleyville

Location: Exterior - Walkway to Facility Entrance

Official Responsible: Owner

Consent Decree: No Paragraph: M.51 Dwg: N/A

Barrier Area: Accessible Route - Exterior Remediation: Required

Barrier Type: Running Slope - Existing (8.3% or more)



Barrier Description: Accessible route running slope exceeds 8.3% (8.3% or more)

Code References: CBC 11B-403.3 and 2010 ADAS 403.3

As Built Description: 8.4% running slope

Proposed Solution: Demolish and construct new accessible ramp with handrails, wheelguide, and required landings. Where drop exceeds 30", provide guardrail.

As-Built Meas: 9 Quantity: LF Cost Estimate: \$1,125.00 BSR: 1 Necessary

X Coordinate: -124.099444979801 Y Coordinate: 40.9442709758877 Z Coordinate: 43.2923279999999

Implementation: Priority 1 Phase Date Status Open

Notes:

Field Date:	8/17/2017	Report Date:	10/6/2017	Barrier #:	8D
Facility:	McKinleyville Library - 1606 Pickett Road, McKinleyville				
Location:	Exterior - Walkway to Facility Entrance				
Official Responsible:	Karen Clower, ADA Coordinator				
Consent Decree:	No	Paragraph:	M.51	Dwg:	N/A
Barrier Area:	Accessible Route - Exterior		Remediation: Required		
Barrier Type:	Bench - Clear Space				



Barrier Description:	No clear space provided at side of bench for wheelchair user
----------------------	--

Code References:	CBC 11B-903.2 and 2010 ADAS 903.2
------------------	-----------------------------------

As Built Description:	No clear space provided
-----------------------	-------------------------

Proposed Solution:	Provide min. 30" x 48" space centered at side of bench
--------------------	--

As-Built Meas:	1	Quantity:	JOB	Cost Estimate:	\$450.00	BSR:	3 Hindrance
----------------	---	-----------	-----	----------------	----------	------	-------------

X Coordinate:	-124.099707	Y Coordinate:	40.944219	Z Coordinate:	43.2923279999999
---------------	-------------	---------------	-----------	---------------	------------------

Implementation:	Priority	1	Phase		Date		Status	Open
-----------------	----------	---	-------	--	------	--	--------	------

Notes:	
--------	--

Field Date:	8/17/2017	Report Date:	10/6/2017	Barrier #:	9
Facility:	McKinleyville Library - 1606 Pickett Road, McKinleyville				
Location:	Exterior - Walkway to Facility Entrance				
Official Responsible:	Karen Clower, ADA Coordinator				
Consent Decree:	No	Paragraph:	M.51	Dwg:	N/A
Barrier Area:	Controls and Mechanisms		Remediation: Required		
Barrier Type:	Operable Part - Landing				



Barrier Description:	Landing not provided at operable part
----------------------	---------------------------------------

Code References:	CBC 11B-305.2 and 2010 ADAS 305.2
------------------	-----------------------------------

As Built Description:	2.8% landing slope at video drop
-----------------------	----------------------------------

Proposed Solution:	Relocate operable part or alter landing to comply
--------------------	---

As-Built Meas:	1	Quantity:	JOB	Cost Estimate:	\$400.00	BSR:	1 Necessary
----------------	---	-----------	-----	----------------	----------	------	-------------

X Coordinate:	-124.099710	Y Coordinate:	40.944175	Z Coordinate:	43.2923279999999
---------------	-------------	---------------	-----------	---------------	------------------

Implementation:	Priority	1	Phase		Date		Status	Open
-----------------	----------	---	-------	--	------	--	--------	------

Notes:	
--------	--

Field Date: 8/17/2017 Report Date: 10/6/2017 Barrier #: 10A

Facility: McKinleyville Library - 1606 Pickett Road, McKinleyville

Location: Exterior - Walkway to Facility Entrance

Official Responsible: Owner

Consent Decree: No Paragraph: M.51 Dwg: N/A

Barrier Area: Accessible Route - Exterior Remediation: Required

Barrier Type: Clear Width - Accessible Route



Barrier Description: Accessible route with no obstructions is not min. 48" wide, excluding the curb

Code References: CBC 11B-403.5.1 Exception 3 and Caltrans Highway Design Manual 105.2

As Built Description: 47" clear width in walkway to book drop

Proposed Solution: Demolish existing and construct new accessible route

As-Built Meas: 10 Quantity: LF Cost Estimate: \$1,250.00 BSR: 1 Necessary

X Coordinate: -124.099727 Y Coordinate: 40.944163 Z Coordinate: 43.2923279999999

Implementation: Priority 1 Phase Date Status Open

Notes:

Field Date: 8/17/2017 Report Date: 10/6/2017 Barrier #: 10B

Facility: McKinleyville Library - 1606 Pickett Road, McKinleyville

Location: Exterior - Walkway to Facility Entrance

Official Responsible: Owner

Consent Decree: No Paragraph: M.51 Dwg: N/A

Barrier Area: Accessible Route - Exterior Remediation: Required

Barrier Type: Turning Space - 360 Degree Turn (<60")



Barrier Description: Circular turning space not minimum of 60" in diameter (including toe/knee space)

Code References: CBC 11B-304.3.1 and 2010 ADAS 304.3.1

As Built Description: 47" wide maneuvering space where pedestrians must deposit books, then turn 360 degrees to exit space

Proposed Solution: Alter floor or ground surface to comply

As-Built Meas: 40 Quantity: SF Cost Estimate: \$5,000.00 BSR: 2 Recommended

X Coordinate: -124.099727 Y Coordinate: 40.944163 Z Coordinate: 43.2923279999999

Implementation: Priority 1 Phase Date Status Open

Notes:

Field Date: 8/17/2017 Report Date: 10/6/2017 Barrier #: 11A

Facility: McKinleyville Library - 1606 Pickett Road, McKinleyville

Location: Main Entrance

Official Responsible: Owner

Consent Decree: No Paragraph: M.51 Dwg: 1 of 1

Barrier Area: Controls and Mechanisms Remediation: Required

Barrier Type: Operable Part - Landing



Barrier Description: Landing not provided at operable part

Code References: CBC 11B-305.2 and 2010 ADAS 305.2

As Built Description: 5.7% slope at exterior ADOD actuator

Proposed Solution: Relocate operable part or alter landing to comply

As-Built Meas: 1 Quantity: JOB Cost Estimate: \$400.00 BSR: 1 Necessary

X Coordinate: N/A Y Coordinate: N/A Z Coordinate: N/A

Implementation: Priority 1 Phase Date Status Open

Notes:

Field Date: 8/17/2017 Report Date: 10/6/2017 Barrier #: 11B

Facility: McKinleyville Library - 1606 Pickett Road, McKinleyville

Location: Main Entrance

Official Responsible: Owner

Consent Decree: No Paragraph: M.51 Dwg: 1 of 1

Barrier Area: Doors or Gates Remediation: Required

Barrier Type: Automatic Opening Device - Dimensions



Barrier Description: Each push plate not min. 4" in diameter or min. 4" by 4" square

Code References: CBC 11B-404.2.9 Exception 2c

As Built Description: 2" in diameter at both interior and exterior actuator

Proposed Solution: Provide compliant push plate or full length bar actuator

As-Built Meas: 2 Quantity: JOB Cost Estimate: \$5,500.00 BSR: 1 Necessary

X Coordinate: N/A Y Coordinate: N/A Z Coordinate: N/A

Implementation: Priority 1 Phase Date Status Open

Notes:

Field Date: Report Date: Barrier #:

Facility:

Location:

Official Responsible:

Consent Decree: Paragraph: Dwg:

Barrier Area: Remediation:

Barrier Type:



Barrier Description:

Code References:

As Built Description:

Proposed Solution:

As-Built Meas: Quantity: Cost Estimate: BSR:

X Coordinate: Y Coordinate: Z Coordinate:

Implementation: Priority Phase Date Status

Notes:

Field Date: Report Date: Barrier #:

Facility:

Location:

Official Responsible:

Consent Decree: Paragraph: Dwg:

Barrier Area: Remediation:

Barrier Type:



Barrier Description:

Code References:

As Built Description:

Proposed Solution:

As-Built Meas: Quantity: Cost Estimate: BSR:

X Coordinate: Y Coordinate: Z Coordinate:

Implementation: Priority Phase Date Status

Notes:

Field Date: 8/17/2017 Report Date: 10/6/2017 Barrier #: 11E

Facility: McKinleyville Library - 1606 Pickett Road, McKinleyville

Location: Main Entrance

Official Responsible: Owner

Consent Decree: No Paragraph: M.51 Dwg: 1 of 1

Barrier Area: Doors or Gates Remediation: Required

Barrier Type: Automatic Opening Device - ANSI/BHMA



Barrier Description: No sign visible from both sides reading "AUTOMATIC DOOR"

Code References: CBC 11B-404.2.9 Exception 2d

As Built Description: No sign reading "AUTOMATIC DOOR" provided

Proposed Solution: Provide ANSI/BHMA sign

As-Built Meas: 1 Quantity: EACH Cost Estimate: \$250.00 BSR: 1 Necessary

X Coordinate: N/A Y Coordinate: N/A Z Coordinate: N/A

Implementation: Priority 1 Phase Date Status Open

Notes:

Field Date: 8/17/2017 Report Date: 10/6/2017 Barrier #: 11F

Facility: McKinleyville Library - 1606 Pickett Road, McKinleyville

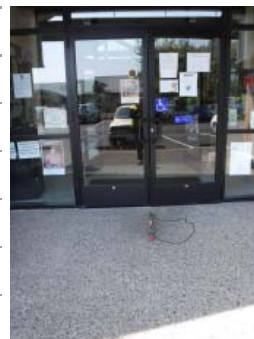
Location: Main Entrance

Official Responsible: Owner

Consent Decree: No Paragraph: M.51 Dwg: 1 of 1

Barrier Area: Doors or Gates Remediation: Required

Barrier Type: Door/Gate Landing - Slope 2.1% to 3.0%



Barrier Description: Door/Gate landing is not level on both sides of door (2.1% to 3.0%)

Code References: CBC 11B-404.2.4.4 and 2010 ADAS 404.2.4.4

As Built Description: 2.4% door landing slope

Proposed Solution: Demolish and reconstruct level landing

As-Built Meas: 40 Quantity: SF Cost Estimate: \$5,000.00 BSR: 4 Low Severity

X Coordinate: N/A Y Coordinate: N/A Z Coordinate: N/A

Implementation: Priority 1 Phase Date Status Open

Notes:

Field Date: 8/17/2017 Report Date: 10/6/2017 Barrier #: 11G
 Facility: McKinleyville Library - 1606 Pickett Road, McKinleyville
 Location: Main Entrance
 Official Responsible: Karen Clower, ADA Coordinator
 Consent Decree: No Paragraph: M.51 Dwg: 1 of 1
 Barrier Area: Signage Remediation: Required
 Barrier Type: Room ID Sign - No Tactile Information



Barrier Description: Room ID sign provided for sighted people lacks tactile info for the visually impaired

Code References: CBC 11B-216.2 and 2010 ADAS 216.2

As Built Description: No tactile information provided where visual sign exists

Proposed Solution: Provide room ID sign with tactile information at wall at latch side of door

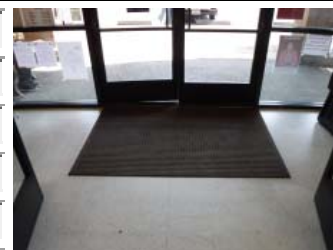
As-Built Meas: 1 Quantity: EACH Cost Estimate: \$250.00 BSR: 1 Necessary

X Coordinate: N/A Y Coordinate: N/A Z Coordinate: N/A

Implementation: Priority 4 Phase Date Status Open

Notes:

Field Date: 8/17/2017 Report Date: 10/6/2017 Barrier #: 11H
 Facility: McKinleyville Library - 1606 Pickett Road, McKinleyville
 Location: Main Entrance
 Official Responsible: Karen Clower, ADA Coordinator
 Consent Decree: No Paragraph: M.51 Dwg: 1 of 1
 Barrier Area: Doors or Gates Remediation: N/A
 Barrier Type: Doormats



Barrier Description: Doormat not anchored to floor (trip hazard)

Code References: CBC 11B-302.2 and 2010 ADAS 302.2

As Built Description: Existing door mat not recessed or secured

Proposed Solution: Secure mat to floor. When mat provides equivalent facilitation on a non-slip resistant floor, the mat may stay in place when maintained

As-Built Meas: 0 Quantity: EACH Cost Estimate: \$0.00 BSR: 1 Necessary

X Coordinate: N/A Y Coordinate: N/A Z Coordinate: N/A

Implementation: Priority 1 Phase Date Status Closed

Notes:

Field Date: 8/17/2017 Report Date: 10/6/2017 Barrier #: 111

Facility: McKinleyville Library - 1606 Pickett Road, McKinleyville

Location: Main Entrance

Official Responsible: Karen Clower, ADA Coordinator

Consent Decree: No Paragraph: M.51 Dwg: 1 of 1

Barrier Area: Signage Remediation: Required

Barrier Type: Tactile Exit Sign - Exit



Barrier Description: Ground floor doors that exit to exterior not provided with signs stating "EXIT"

Code References: CBC 11B-216.4.1 & 11B-703 and 2010 ADAS 216.4.1

As Built Description: No tactile sign provided where required

Proposed Solution: Provide compliant sign at exit side of door

As-Built Meas: 1 Quantity: EACH Cost Estimate: \$250.00 BSR: 1 Necessary

X Coordinate: N/A Y Coordinate: N/A Z Coordinate: N/A

Implementation: Priority 4 Phase Date Status Open

Notes:

Field Date: 8/17/2017 Report Date: 10/6/2017 Barrier #: 12A

Facility: McKinleyville Library - 1606 Pickett Road, McKinleyville

Location: Main Entrance Vestibule

Official Responsible: Karen Clower, ADA Coordinator

Consent Decree: No Paragraph: M.51 Dwg: 1 of 1

Barrier Area: Controls and Mechanisms Remediation: Required

Barrier Type: Clothing Hook or Rod - Height



Barrier Description: Clothing hooks not max. 48" high AFF

Code References: CBC 11B-308.2.1 and 2010 ADAS 308.2.1

As Built Description: 57" high

Proposed Solution: Provide additional hook in accessible location

As-Built Meas: 1 Quantity: EACH Cost Estimate: \$125.00 BSR: 2 Recommended

X Coordinate: N/A Y Coordinate: N/A Z Coordinate: N/A

Implementation: Priority 1 Phase Date Status Open

Notes:

Field Date: 8/17/2017 Report Date: 10/6/2017 Barrier #: 12B

Facility: McKinleyville Library - 1606 Pickett Road, McKinleyville

Location: Main Entrance Vestibule

Official Responsible: Karen Clower, ADA Coordinator

Consent Decree: No Paragraph: M.51 Dwg: 1 of 1

Barrier Area: Controls and Mechanisms Remediation: Required

Barrier Type: Flyer Holder - Clear Space



Barrier Description: Clear floor space for wheelchair not provided at flyer holder

Code References: CBC 11B-305.3 and 2010 ADAS 305.3

As Built Description: Flyer clear floor space blocked store items

Proposed Solution: Move to provide accessible reach range or provide assistance

As-Built Meas: 1 Quantity: JOB Cost Estimate: \$0.00 BSR: 1 Necessary

X Coordinate: N/A Y Coordinate: N/A Z Coordinate: N/A

Implementation: Priority 1 Phase Date Status Open

Notes:

Field Date: 8/17/2017 Report Date: 10/6/2017 Barrier #: 12C

Facility: McKinleyville Library - 1606 Pickett Road, McKinleyville

Location: Main Entrance Vestibule

Official Responsible: Karen Clower, ADA Coordinator

Consent Decree: No Paragraph: M.51 Dwg: 1 of 1

Barrier Area: Controls and Mechanisms Remediation: Required

Barrier Type: Flyer Holder - High Reach Range



Barrier Description: Flyer holder point of control not at max. 48" high reach

Code References: CBC 11B-308.2.1 and 2010 ADAS 308.2.1

As Built Description: 69-1/2" high. Flyers not located within accessible reach range

Proposed Solution: Move to provide accessible reach range or provide assistance

As-Built Meas: 1 Quantity: JOB Cost Estimate: \$0.00 BSR: 3 Hindrance

X Coordinate: N/A Y Coordinate: N/A Z Coordinate: N/A

Implementation: Priority 1 Phase Date Status Open

Notes:

Field Date: 8/17/2017 Report Date: 10/6/2017 Barrier #: 12D

Facility: McKinleyville Library - 1606 Pickett Road, McKinleyville

Location: Main Entrance Vestibule

Official Responsible: Owner

Consent Decree: No Paragraph: M.51 Dwg: 1 of 1

Barrier Area: Doors or Gates Remediation: Required

Barrier Type: Door Closer - Interior Adjustment

Barrier Description: Door opening force exceeds 5 lbf

Code References: CBC 11B-404.2.9 and 2010 ADAS 404.2.9

As Built Description: 15 lbf at inner vestibule doors

Proposed Solution: Replace or adjust existing closer

As-Built Meas: 1 Quantity: EACH Cost Estimate: \$450.00 BSR: 1 Necessary

X Coordinate: N/A Y Coordinate: N/A Z Coordinate: N/A

Implementation: Priority 1 Phase Date Status Open

Notes: Interior vestibule doors do not open upon use of automatic door opening device



Field Date: 8/17/2017 Report Date: 10/6/2017 Barrier #: 12E

Facility: McKinleyville Library - 1606 Pickett Road, McKinleyville

Location: Main Entrance Vestibule

Official Responsible: Owner

Consent Decree: No Paragraph: M.51 Dwg: 1 of 1

Barrier Area: Doors or Gates Remediation: Required

Barrier Type: Door Closer - Interior Sweep

Barrier Description: Door closer lacks min. 5 second sweep period/back check

Code References: CBC 11B-404.2.8.1 and ADA/ABA 404.2.8.1

As Built Description: 4 seconds sweep

Proposed Solution: Replace or adjust existing closer

As-Built Meas: 0 Quantity: EACH Cost Estimate: \$0.00 BSR: 2 Recommended

X Coordinate: N/A Y Coordinate: N/A Z Coordinate: N/A

Implementation: Priority 1 Phase Date Status Open

Notes: Interior vestibule doors do not open upon use of automatic door opening device



Field Date: 8/17/2017 Report Date: 10/6/2017 Barrier #: 12F
 Facility: McKinleyville Library - 1606 Pickett Road, McKinleyville
 Location: Main Entrance Vestibule
 Official Responsible: Owner
 Consent Decree: No Paragraph: M.51 Dwg: 1 of 1
 Barrier Area: Doors or Gates Remediation: Required
 Barrier Type: Automatic Opening Device - Dimensions



Barrier Description: Each push plate not min. 4" in diameter or min. 4" by 4" square

Code References: CBC 11B-404.2.9 Exception 2c

As Built Description: Auto door actuator mounted on inner vestibule doors that are not actuated by the device. Doors do not comply

Proposed Solution: Adjust inner vestibule doors to comply. Install auto door actuator for inner doors if they are not compliant

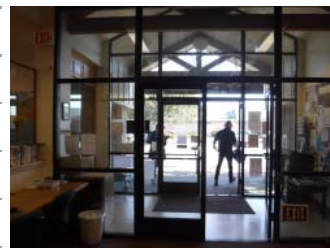
As-Built Meas: 1 Quantity: JOB Cost Estimate: \$2,750.00 BSR: 1 Necessary

X Coordinate: N/A Y Coordinate: N/A Z Coordinate: N/A

Implementation: Priority 1 Phase Date Status Open

Notes: This push plate should not be located on this door. An optical scanning device should have been installed on the entrance doors so that this confusing actuator would not be located here.

Field Date: 8/17/2017 Report Date: 10/6/2017 Barrier #: 12G
 Facility: McKinleyville Library - 1606 Pickett Road, McKinleyville
 Location: Main Entrance Vestibule
 Official Responsible: Karen Clower, ADA Coordinator
 Consent Decree: No Paragraph: M.51 Dwg: 1 of 1
 Barrier Area: Signage Remediation: Required
 Barrier Type: Tactile Exit Sign - To Exit



Barrier Description: Exit door directly leading to horizontal exit door lacks "TO EXIT" sign

Code References: CBC 11B-216.4.1 & 11B-703 and 2010 ADAS 216.4.1

As Built Description: No tactile sign provided where required

Proposed Solution: Provide compliant sign at exit side of door

As-Built Meas: 1 Quantity: EACH Cost Estimate: \$250.00 BSR: 2 Recommended

X Coordinate: N/A Y Coordinate: N/A Z Coordinate: N/A

Implementation: Priority 4 Phase Date Status Open

Notes:

Field Date: 8/17/2017 Report Date: 10/6/2017 Barrier #: 13A

Facility: McKinleyville Library - 1606 Pickett Road, McKinleyville

Location: Checkout Counter

Official Responsible: Karen Clower, ADA Coordinator

Consent Decree: No Paragraph: M.51 Dwg: 1 of 1

Barrier Area: Counters and Tables Remediation: Required

Barrier Type: Counter - Knee Clearance



Barrier Description: Knee clearance of at least 27" high, 30" wide and 19" deep not provided

Code References: CBC 11B-306.3 and 2010 ADAS 306.3

As Built Description: 11" deep knee clearance

Proposed Solution: Provide min. 3 ft segment of accessible counter. Flip-up counters, adjacent tables and similar devices not permitted

As-Built Meas: 1 Quantity: EACH Cost Estimate: \$875.00 BSR: 3 Hindrance

X Coordinate: N/A Y Coordinate: N/A Z Coordinate: N/A

Implementation: Priority 2 Phase Date Status Open

Notes:

Field Date: 8/17/2017 Report Date: 10/6/2017 Barrier #: 13B

Facility: McKinleyville Library - 1606 Pickett Road, McKinleyville

Location: Checkout Counter

Official Responsible: Owner

Consent Decree: No Paragraph: M.51 Dwg: 1 of 1

Barrier Area: Controls and Mechanisms Remediation: N/A

Barrier Type: Electrical Switches - Side Reach High (Safe Harbor)



Barrier Description: Light switch control box top edge at max. 54" high measured to top of box

Code References: ADA Title II, Subpart D, § 35.150 Existing facilities § 35.150(b)(2)(i)

As Built Description: 52-1/2" high

Proposed Solution: No remediation required. Control box complied with prior code and is granted safe harbor

As-Built Meas: 0 Quantity: EACH Cost Estimate: \$0.00 BSR: 3 Hindrance

X Coordinate: N/A Y Coordinate: N/A Z Coordinate: N/A

Implementation: Priority 2 Phase Date Status Safe Harbor

Notes:

Field Date: 8/17/2017 Report Date: 10/6/2017 Barrier #: 13C

Facility: McKinleyville Library - 1606 Pickett Road, McKinleyville

Location: Checkout Counter

Official Responsible: Karen Clower, ADA Coordinator

Consent Decree: No Paragraph: M.51 Dwg: 1 of 1

Barrier Area: Doors or Gates Remediation: Required

Barrier Type: Smooth Surface at Bottom - Doorstop



Barrier Description: Door/Gate has door stop that may create trap condition

Code References: CBC 11B-404.2.10 and 2010 ADAS 404.2.3, 404.2.10

As Built Description: Door stop located within bottom 10" of door

Proposed Solution: Remove door stop or any other element within bottom 10" of door

As-Built Meas: 1 Quantity: EACH Cost Estimate: \$50.00 BSR: 1 Necessary

X Coordinate: N/A Y Coordinate: N/A Z Coordinate: N/A

Implementation: Priority 2 Phase Date Status Open

Notes:

Field Date: 8/17/2017 Report Date: 10/6/2017 Barrier #: 13D

Facility: McKinleyville Library - 1606 Pickett Road, McKinleyville

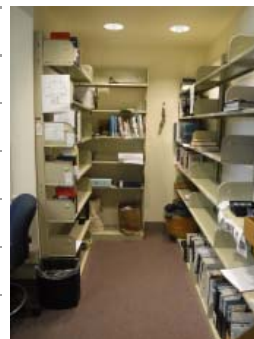
Location: Checkout Counter

Official Responsible: Karen Clower, ADA Coordinator

Consent Decree: No Paragraph: M.51 Dwg: 1 of 1

Barrier Area: Accessible Route - Interior Remediation: Required

Barrier Type: Aisle Clear Width - Double Sided



Barrier Description: Accessible route is not at least 44" wide in aisles serving items on both sides

Code References: CBC 11B-403.5.1 Exception 4

As Built Description: 40" wide. Adequate clear width not provided

Proposed Solution: Rearrange elements to provide accessible route

As-Built Meas: 1 Quantity: JOB Cost Estimate: \$500.00 BSR: 3 Hindrance

X Coordinate: N/A Y Coordinate: N/A Z Coordinate: N/A

Implementation: Priority 2 Phase Date Status Open

Notes: 40" wide between shelves and in turning space

Field Date: 8/17/2017 Report Date: 10/6/2017 Barrier #: 14A

Facility: McKinleyville Library - 1606 Pickett Road, McKinleyville

Location: Book Stacks

Official Responsible: Karen Clower, ADA Coordinator

Consent Decree: No Paragraph: M.51 Dwg: 1 of 1

Barrier Area: Accessible Route - Interior Remediation: Required

Barrier Type: Aisle Clear Width - Double Sided



Barrier Description: Accessible route is not at least 44" wide in aisles serving items on both sides

Code References: CBC 11B-403.5.1 Exception 4

As Built Description: 36-1/2" wide. Adequate clear width not provided

Proposed Solution: Rearrange elements to provide accessible route

As-Built Meas: 1 Quantity: JOB Cost Estimate: \$500.00 BSR: 3 Hindrance

X Coordinate: N/A Y Coordinate: N/A Z Coordinate: N/A

Implementation: Priority 2 Phase Date Status Open

Notes:

Field Date: 8/17/2017 Report Date: 10/6/2017 Barrier #: 14B

Facility: McKinleyville Library - 1606 Pickett Road, McKinleyville

Location: Book Stacks

Official Responsible: Karen Clower, ADA Coordinator

Consent Decree: No Paragraph: M.51 Dwg: 1 of 1

Barrier Area: Accessible Route - Interior Remediation: Required

Barrier Type: Aisle Clear Width - Double Sided



Barrier Description: Accessible route is not at least 44" wide in aisles serving items on both sides

Code References: CBC 11B-403.5.1 Exception 4

As Built Description: 39-1/2" wide. Adequate clear width not provided

Proposed Solution: Rearrange elements to provide accessible route

As-Built Meas: 1 Quantity: JOB Cost Estimate: \$500.00 BSR: 3 Hindrance

X Coordinate: N/A Y Coordinate: N/A Z Coordinate: N/A

Implementation: Priority 2 Phase Date Status Open

Notes:

Field Date:	8/17/2017	Report Date:	10/6/2017	Barrier #:	14C
Facility:	McKinleyville Library - 1606 Pickett Road, McKinleyville				
Location:	Book Stacks				
Official Responsible:	Karen Clower, ADA Coordinator				
Consent Decree:	No	Paragraph:	M.51	Dwg:	1 of 1
Barrier Area:	Accessible Route - Interior		Remediation: Required		
Barrier Type:	Aisle Clear Width - Double Sided				



Barrier Description:	Accessible route is not at least 44" wide in aisles serving items on both sides
----------------------	---

Code References:	CBC 11B-403.5.1 Exception 4
------------------	-----------------------------

As Built Description:	40" wide. Adequate clear width not provided
-----------------------	---

Proposed Solution:	Rearrange elements to provide accessible route
--------------------	--

As-Built Meas:	1	Quantity:	JOB	Cost Estimate:	\$500.00	BSR:	3 Hindrance
----------------	---	-----------	-----	----------------	----------	------	-------------

X Coordinate:	N/A	Y Coordinate:	N/A	Z Coordinate:	N/A
---------------	-----	---------------	-----	---------------	-----

Implementation:	Priority	2	Phase		Date		Status	Open
-----------------	----------	---	-------	--	------	--	--------	------

Notes:	
--------	--

Field Date:	8/17/2017	Report Date:	10/6/2017	Barrier #:	14D
Facility:	McKinleyville Library - 1606 Pickett Road, McKinleyville				
Location:	Book Stacks				
Official Responsible:	Karen Clower, ADA Coordinator				
Consent Decree:	No	Paragraph:	M.51	Dwg:	1 of 1
Barrier Area:	Accessible Route - Interior		Remediation: Required		
Barrier Type:	Aisle Clear Width - Double Sided				



Barrier Description:	Accessible route is not at least 44" wide in aisles serving items on both sides
----------------------	---

Code References:	CBC 11B-403.5.1 Exception 4
------------------	-----------------------------

As Built Description:	39-1/2" wide. Adequate clear width not provided
-----------------------	---

Proposed Solution:	Rearrange elements to provide accessible route
--------------------	--

As-Built Meas:	1	Quantity:	JOB	Cost Estimate:	\$500.00	BSR:	3 Hindrance
----------------	---	-----------	-----	----------------	----------	------	-------------

X Coordinate:	N/A	Y Coordinate:	N/A	Z Coordinate:	N/A
---------------	-----	---------------	-----	---------------	-----

Implementation:	Priority	2	Phase		Date		Status	Open
-----------------	----------	---	-------	--	------	--	--------	------

Notes:	
--------	--

Field Date: 8/17/2017 Report Date: 10/6/2017 Barrier #: 14E

Facility: McKinleyville Library - 1606 Pickett Road, McKinleyville

Location: Book Stacks

Official Responsible: Karen Clower, ADA Coordinator

Consent Decree: No Paragraph: M.51 Dwg: 1 of 1

Barrier Area: Controls and Mechanisms Remediation: Required

Barrier Type: Shelves or Cabinets - Storage



Barrier Description: Shelf or cabinet not mounted max. 48" above floor or ground (max. 54" at pre-ADA elements)

Code References: CBC 11B-811.3 and 2010 ADAS 811.3

As Built Description: Shelf or cabinet not accessible

Proposed Solution: Provide additional shelf/cabinet at accessible height or provide assistance

As-Built Meas: 1 Quantity: JOB Cost Estimate: \$0.00 BSR: 3 Hindrance

X Coordinate: N/A Y Coordinate: N/A Z Coordinate: N/A

Implementation: Priority 2 Phase Date Status Open

Notes:

Field Date: 8/17/2017 Report Date: 10/6/2017 Barrier #: 14F

Facility: McKinleyville Library - 1606 Pickett Road, McKinleyville

Location: Book Stacks

Official Responsible: Karen Clower, ADA Coordinator

Consent Decree: No Paragraph: M.51 Dwg: 1 of 1

Barrier Area: Counters and Tables Remediation: Required

Barrier Type: Table - Knee Clearance



Barrier Description: Knee clearance of at least 27" high, 30" wide and 19" deep not provided

Code References: CBC 11B-306.3 and 2010 ADAS 306.3

As Built Description: 16" deep knee clearance to central support

Proposed Solution: Provide min. 1 accessible table and 5% overall. Avoid pedestal base tables.

As-Built Meas: 1 Quantity: EACH Cost Estimate: \$450.00 BSR: 3 Hindrance

X Coordinate: N/A Y Coordinate: N/A Z Coordinate: N/A

Implementation: Priority 2 Phase Date Status Open

Notes:

Field Date: Report Date: Barrier #:

Facility:

Location:

Official Responsible:

Consent Decree: Paragraph: Dwg:

Barrier Area: Remediation:

Barrier Type:



Barrier Description:

Code References:

As Built Description:

Proposed Solution:

As-Built Meas: Quantity: Cost Estimate: BSR:

X Coordinate: Y Coordinate: Z Coordinate:

Implementation: Priority Phase Date Status

Notes:

Field Date: Report Date: Barrier #:

Facility:

Location:

Official Responsible:

Consent Decree: Paragraph: Dwg:

Barrier Area: Remediation:

Barrier Type:



Barrier Description:

Code References:

As Built Description:

Proposed Solution:

As-Built Meas: Quantity: Cost Estimate: BSR:

X Coordinate: Y Coordinate: Z Coordinate:

Implementation: Priority Phase Date Status

Notes:

Field Date: 8/17/2017 Report Date: 10/6/2017 Barrier #: 141

Facility: McKinleyville Library - 1606 Pickett Road, McKinleyville

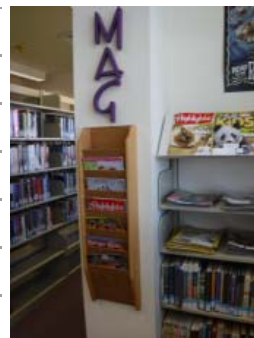
Location: Book Stacks

Official Responsible: Karen Clower, ADA Coordinator

Consent Decree: No Paragraph: M.51 Dwg: 1 of 1

Barrier Area: Controls and Mechanisms Remediation: Required

Barrier Type: Flyer Holder - High Reach Range



Barrier Description: Flyer holder point of control not at max. 48" high reach

Code References: CBC 11B-308.2.1 and 2010 ADAS 308.2.1

As Built Description: 59-1/2" high magazine rack

Proposed Solution: Move to provide accessible reach range or provide assistance

As-Built Meas: 1 Quantity: JOB Cost Estimate: \$0.00 BSR: 3 Hindrance

X Coordinate: N/A Y Coordinate: N/A Z Coordinate: N/A

Implementation: Priority 2 Phase Date Status Open

Notes:

Field Date: 8/17/2017 Report Date: 10/6/2017 Barrier #: 15A

Facility: McKinleyville Library - 1606 Pickett Road, McKinleyville

Location: Children's Area

Official Responsible: Karen Clower, ADA Coordinator

Consent Decree: No Paragraph: M.51 Dwg: 1 of 1

Barrier Area: Counters and Tables Remediation: Required

Barrier Type: Table - Pedestal Base



Barrier Description: Knee clearance of at least 27" high, 30" wide and 19" deep not provided, blocked by pedestal base

Code References: CBC 11B-306.3 & 11B-306.2 and 2010 ADAS 306.3 & 306.2

As Built Description: Table knee clearance not accessible

Proposed Solution: Provide min. 1 accessible table and 5% overall. Avoid pedestal base tables.

As-Built Meas: 1 Quantity: EACH Cost Estimate: \$450.00 BSR: 2 Recommended

X Coordinate: N/A Y Coordinate: N/A Z Coordinate: N/A

Implementation: Priority 2 Phase Date Status Open

Notes:

Field Date: 8/17/2017 Report Date: 10/6/2017 Barrier #: 15B

Facility: McKinleyville Library - 1606 Pickett Road, McKinleyville

Location: Children's Area

Official Responsible: Karen Clower, ADA Coordinator

Consent Decree: No Paragraph: M.51 Dwg: 1 of 1

Barrier Area: Accessible Route - Interior Remediation: Required

Barrier Type: Carpet/Rug/Door Mat



Barrier Description: Carpet/rug not anchored to floor (possible trip hazard)

Code References: CBC 11B-302.2 and 2010 ADAS 302.2

As Built Description: Carpet/rug creates tripping hazard

Proposed Solution: Secure exiting carpet/rug or replace

As-Built Meas: 1 Quantity: EACH Cost Estimate: \$500.00 BSR: 1 Necessary

X Coordinate: N/A Y Coordinate: N/A Z Coordinate: N/A

Implementation: Priority 2 Phase Date Status Open

Notes:

Field Date: 8/17/2017 Report Date: 10/6/2017 Barrier #: 15C

Facility: McKinleyville Library - 1606 Pickett Road, McKinleyville

Location: Children's Area

Official Responsible: Owner

Consent Decree: No Paragraph: M.51 Dwg: 1 of 1

Barrier Area: Controls and Mechanisms Remediation: Required

Barrier Type: Electrical Outlets - Side Reach Low Unobstructed



Barrier Description: Electrical outlet control box not min. 15" high measured to the bottom of the outlet box

Code References: CBC 11B-308.1.2, 11B-308.3.1 and 2010 ADAS 308.3

As Built Description: 13" high at bottom edge

Proposed Solution: Relocate switch box to min. 15" high at the bottom of the outlet box

As-Built Meas: 1 Quantity: EACH Cost Estimate: \$750.00 BSR: 3 Hindrance

X Coordinate: N/A Y Coordinate: N/A Z Coordinate: N/A

Implementation: Priority 2 Phase Date Status Safe Harbor

Notes: Building constructed in 1997 meets 1991 Standards.

Field Date: 8/17/2017 Report Date: 10/6/2017 Barrier #: 16A
Facility: McKinleyville Library - 1606 Pickett Road, McKinleyville
Location: Restroom Vestibule
Official Responsible: Karen Clower, ADA Coordinator
Consent Decree: No Paragraph: M.51 Dwg: 1 of 1
Barrier Area: Signage Remediation: Required
Barrier Type: Room ID Sign - No Tactile Information



Barrier Description: Room ID sign provided for sighted people lacks tactile info for the visually impaired

Code References: CBC 11B-216.2 and 2010 ADAS 216.2

As Built Description: No tactile information provided where visual sign exists

Proposed Solution: Provide room ID sign with tactile information at wall at latch side of door

As-Built Meas: 1 Quantity: EACH Cost Estimate: \$250.00 BSR: 1 Necessary

X Coordinate: N/A Y Coordinate: N/A Z Coordinate: N/A

Implementation: Priority 4 Phase Date Status Open

Notes:

Field Date: 8/17/2017 Report Date: 10/6/2017 Barrier #: 16B
Facility: McKinleyville Library - 1606 Pickett Road, McKinleyville
Location: Restroom Vestibule
Official Responsible: Owner
Consent Decree: No Paragraph: M.51 Dwg: 1 of 1
Barrier Area: Doors or Gates Remediation: Required
Barrier Type: Door Closer - Interior Automatic Device



Barrier Description: Door opening force exceeds 5 lbf

Code References: CBC 11B-404.2.9 and 2010 ADAS 404.2.9

As Built Description: Door closer not installed at fire rated door (frame is fire rated, door was replaced with non-rated door)

Proposed Solution: Provide automatic door opening device to comply with fire code and accessibility requirements

As-Built Meas: 1 Quantity: EACH Cost Estimate: \$5,000.00 BSR: 1 Necessary

X Coordinate: N/A Y Coordinate: N/A Z Coordinate: N/A

Implementation: Priority 4 Phase Date Status Open

Notes:

Field Date: 8/17/2017 Report Date: 10/6/2017 Barrier #: 16C

Facility: McKinleyville Library - 1606 Pickett Road, McKinleyville

Location: Restroom Vestibule

Official Responsible: Karen Clower, ADA Coordinator

Consent Decree: No Paragraph: M.51 Dwg: 1 of 1

Barrier Area: Doors or Gates Remediation: Required

Barrier Type: Maneuvering Cl - Stored Items



Barrier Description: Door/Gate lacks required maneuvering clearance

Code References: CBC Figure 11B-404.2.4.1 and 2010 ADAS 404.2.4.1

As Built Description: 6-1/2" strike edge clearance at push side of door to file cabinet

Proposed Solution: Provide automatic door opening device to comply with fire code and accessibility requirements

As-Built Meas: 0 Quantity: EACH Cost Estimate: \$0.00 BSR: 1 Necessary

X Coordinate: N/A Y Coordinate: N/A Z Coordinate: N/A

Implementation: Priority 2 Phase Date Status Open

Notes:

Field Date: 8/17/2017 Report Date: 10/6/2017 Barrier #: 16D

Facility: McKinleyville Library - 1606 Pickett Road, McKinleyville

Location: Restroom Vestibule

Official Responsible: Owner

Consent Decree: No Paragraph: M.51 Dwg: 1 of 1

Barrier Area: Doors or Gates Remediation: Required

Barrier Type: Door/Gate Height - New Construction



Barrier Description: Door/Gate clearance not min. 80" high

Code References: CBC 11B-404.2.3 & 11B-307.2 and 2010 ADAS 404.2.3 & 307.2

As Built Description: 79-3/4" door height

Proposed Solution: Replace door or gate

As-Built Meas: 1 Quantity: EACH Cost Estimate: \$2,250.00 BSR: 1 Necessary

X Coordinate: N/A Y Coordinate: N/A Z Coordinate: N/A

Implementation: Priority 2 Phase Date Status Open

Notes:

Field Date: 8/17/2017 Report Date: 10/6/2017 Barrier #: 16E

Facility: McKinleyville Library - 1606 Pickett Road, McKinleyville

Location: Restroom Vestibule

Official Responsible: Karen Clower, ADA Coordinator

Consent Decree: No Paragraph: M.51 Dwg: 1 of 1

Barrier Area: Controls and Mechanisms Remediation: N/A

Barrier Type: Electrical Switches - Side Reach High (Safe Harbor)



Barrier Description: Light switch control box top edge at max. 54" high measured to top of box

Code References: ADA Title II, Subpart D, § 35.150 Existing facilities § 35.150(b)(2)(i)

As Built Description: 49-7/8" high

Proposed Solution: No remediation required. Control box complied with prior code and is granted safe harbor

As-Built Meas: 0 Quantity: EACH Cost Estimate: \$0.00 BSR: 3 Hindrance

X Coordinate: N/A Y Coordinate: N/A Z Coordinate: N/A

Implementation: Priority 2 Phase Date Status Safe Harbor

Notes:

Field Date: 8/17/2017 Report Date: 10/6/2017 Barrier #: 16F

Facility: McKinleyville Library - 1606 Pickett Road, McKinleyville

Location: Restroom Vestibule

Official Responsible: Karen Clower, ADA Coordinator

Consent Decree: No Paragraph: M.51 Dwg: 1 of 1

Barrier Area: Signage Remediation: Required

Barrier Type: Tactile Exit Sign - Route



Barrier Description: Exit door to exterior thru exit enclosure, interior room or passageway lacks "EXIT ROUTE" sign

Code References: CBC 11B-216.4.1 & 11B-703 and 2010 ADAS 216.4.1

As Built Description: No tactile sign provided where required at exit side of vestibule door

Proposed Solution: Provide compliant sign at exit side of door

As-Built Meas: 1 Quantity: EACH Cost Estimate: \$250.00 BSR: 2 Recommended

X Coordinate: N/A Y Coordinate: N/A Z Coordinate: N/A

Implementation: Priority 4 Phase Date Status Open

Notes:

Field Date: 12/8/2017 Report Date: 10/2/2019 Barrier #: 17A
 Facility: McKinleyville Library - 1606 Pickett Road, McKinleyville
 Location: Men's Restroom
 Official Responsible: Karen Clower, ADA Coordinator
 Consent Decree: Yes Paragraph: J.6.a.i. - DOJ# 1 Dwg: 1 of 1
 Barrier Area: Restrooms Remediation: N/A
 Barrier Type: Sign - Braille/tactile Information



Barrier Description: No sign with Braille/Tactile information provided to identify restroom

Code References: CBC 11B-216.2 and ADAS 216.2

As Built Description: Sign has been replaced. New sign complies.

Proposed Solution: Barrier removed

As-Built Meas: 0 Quantity: EACH Cost Estimate: \$0.00 BSR: 1 Necessary

X Coordinate: N/A Y Coordinate: N/A Z Coordinate: N/A

Implementation: Priority 3 Phase Date Status Closed

Notes:

Field Date: 8/17/2017 Report Date: 10/6/2017 Barrier #: 17B
 Facility: McKinleyville Library - 1606 Pickett Road, McKinleyville
 Location: Men's Restroom
 Official Responsible: Karen Clower, ADA Coordinator
 Consent Decree: No Paragraph: M.51 Dwg: 1 of 1
 Barrier Area: Signage Remediation: Recommended
 Barrier Type: Sign - Sharp Edges



Barrier Description: Signs that are designed to be read by touch has sharp or abrasive edges

Code References: CBC 11B-703.2 Advisory and 2010 ADAS 703.2 Advisory

As Built Description: New sign with tactile information has sharp edges

Proposed Solution: Replace existing sign or sand edges

As-Built Meas: 1 Quantity: EACH Cost Estimate: \$250.00 BSR: 1 Necessary

X Coordinate: N/A Y Coordinate: N/A Z Coordinate: N/A

Implementation: Priority 3 Phase Date Status Closed

Notes:

Field Date: 12/8/2017 Report Date: 10/2/2019 Barrier #: 17C
 Facility: McKinleyville Library - 1606 Pickett Road, McKinleyville
 Location: Men's Restroom
 Official Responsible: Karen Clower, ADA Coordinator
 Consent Decree: Yes Paragraph: J.6.a.i. - DOJ# 1 Dwg: 1 of 1
 Barrier Area: Doors or Gates Remediation: N/A
 Barrier Type: Door Closer - Interior Automatic Device



Barrier Description: Door opening force exceeds 5 lbf

Code References: CBC 11B-404.2.9 and 2010 ADAS 404.2.9

As Built Description: Automatic door opening device installed

Proposed Solution: Barrier removed

As-Built Meas: 0 Quantity: EACH Cost Estimate: \$0.00 BSR: 1 Necessary

X Coordinate: N/A Y Coordinate: N/A Z Coordinate: N/A

Implementation: Priority 3 Phase Date Status Closed

Notes: Original door assembly was fire-rated. Since 2005, the door has been replaced with a non-fire rated door.

Field Date: 12/8/2017 Report Date: 10/2/2019 Barrier #: 17D
 Facility: McKinleyville Library - 1606 Pickett Road, McKinleyville
 Location: Men's Restroom
 Official Responsible: Karen Clower, ADA Coordinator
 Consent Decree: No Paragraph: M.51 Dwg: 1 of 1
 Barrier Area: Doors or Gates Remediation: N/A
 Barrier Type: Door Closer - Interior Sweep



Barrier Description: Door closer lacks min. 5 second sweep period/back check

Code References: CBC 11B-404.2.8.1 and ADA/ABA 404.2.8.1

As Built Description: Automatic door opening device installed

Proposed Solution: Barrier removed

As-Built Meas: 0 Quantity: EACH Cost Estimate: \$0.00 BSR: 2 Recommended

X Coordinate: N/A Y Coordinate: N/A Z Coordinate: N/A

Implementation: Priority 3 Phase Date Status Closed

Notes:

Field Date: 8/17/2017 Report Date: 10/6/2017 Barrier #: 17E

Facility: McKinleyville Library - 1606 Pickett Road, McKinleyville

Location: Men's Restroom

Official Responsible: Karen Clower, ADA Coordinator

Consent Decree: No Paragraph: M.51 Dwg: 1 of 1

Barrier Area: Doors or Gates Remediation: Required

Barrier Type: Automatic Opening Device - Two Controls



Barrier Description: At each location where push plates are provided, two push plates are not provided

Code References: CBC 11B-404.2.9 Exception 2c

As Built Description: Automatic door opening device installed, but lacks lower push plate (door opening device actuator)

Proposed Solution: Provide additional push plate or full length bar actuator

As-Built Meas: 1 Quantity: JOB Cost Estimate: \$2,750.00 BSR: 1 Necessary

X Coordinate: N/A Y Coordinate: N/A Z Coordinate: N/A

Implementation: Priority 3 Phase Date Status Open

Notes:

Field Date: 8/17/2017 Report Date: 10/2/2019 Barrier #: 17F

Facility: McKinleyville Library - 1606 Pickett Road, McKinleyville

Location: Men's Restroom

Official Responsible: Karen Clower, ADA Coordinator

Consent Decree: No Paragraph: M.51 Dwg: 1 of 1

Barrier Area: Doors or Gates Remediation: N/A

Barrier Type: Maneuvering Cl - Front App/Push 12"



Barrier Description: Door/Gate with latch/closer at push side lacks min. 12" beyond latch side of door

Code References: CBC Figure 11B-404.2.4.1 and 2010 ADAS 404.2.4.1

As Built Description: 7" clearance due to wall mounted trash bin. Automatic door opening device installed

Proposed Solution: Barrier removed

As-Built Meas: 0 Quantity: EACH Cost Estimate: \$0.00 BSR: 1 Necessary

X Coordinate: N/A Y Coordinate: N/A Z Coordinate: N/A

Implementation: Priority 3 Phase Date Status Closed

Notes:

Field Date: 8/17/2017 Report Date: 10/6/2017 Barrier #: 17G
 Facility: McKinleyville Library - 1606 Pickett Road, McKinleyville
 Location: Men's Restroom
 Official Responsible: Owner
 Consent Decree: No Paragraph: M.51 Dwg: 1 of 1
 Barrier Area: Doors or Gates Remediation: Required
 Barrier Type: Door 10" Bottom Surface



Barrier Description: Door/Gate lacks min. 10" smooth uninterrupted bottom surface

Code References: CBC 11B-404.2.10 and 2010 ADAS 404.2.10

As Built Description: Door stop located within bottom 10" of door

Proposed Solution: Remove door stop or any other element within bottom 10" of door

As-Built Meas: 1 Quantity: EACH Cost Estimate: \$225.00 BSR: 1 Necessary

X Coordinate: N/A Y Coordinate: N/A Z Coordinate: N/A

Implementation: Priority 3 Phase Date Status Open

Notes:

Field Date: 8/17/2017 Report Date: 10/6/2017 Barrier #: 17H
 Facility: McKinleyville Library - 1606 Pickett Road, McKinleyville
 Location: Men's Restroom
 Official Responsible: Owner
 Consent Decree: No Paragraph: M.51 Dwg: 1 of 1
 Barrier Area: Restrooms Remediation: Required
 Barrier Type: Dispensers - Protruding Object



Barrier Description: Dispenser creates protruding object in path of travel

Code References: CBC 11B-307.2 and 2010 ADAS 307.2

As Built Description: Paper towel dispenser protrudes 7-1/2" at 38-3/8" high

Proposed Solution: Relocate/remount dispenser or provide detectable warning

As-Built Meas: 1 Quantity: EACH Cost Estimate: \$125.00 BSR: 2 Recommended

X Coordinate: N/A Y Coordinate: N/A Z Coordinate: N/A

Implementation: Priority 3 Phase Date Status Open

Notes:

Field Date: 8/17/2017 Report Date: 10/6/2017 Barrier #: 17I
 Facility: McKinleyville Library - 1606 Pickett Road, McKinleyville
 Location: Men's Restroom
 Official Responsible: Owner
 Consent Decree: No Paragraph: M.51 Dwg: 1 of 1
 Barrier Area: Restrooms Remediation: Required
 Barrier Type: Lavatory - Knee Clearance



Barrier Description: Lavatory bottom apron/edge not max 29" reducing to 27" at 8" back from edge

Code References: CBC 11B-606.2 and 2010 ADAS 606.2

As Built Description: 26" high knee clearance

Proposed Solution: Provide min. one accessible lavatory

As-Built Meas: 1 Quantity: JOB Cost Estimate: \$450.00 BSR: 1 Necessary

X Coordinate: N/A Y Coordinate: N/A Z Coordinate: N/A

Implementation: Priority 3 Phase Date Status Open

Notes:

Field Date: 8/17/2017 Report Date: 10/6/2017 Barrier #: 17J
 Facility: McKinleyville Library - 1606 Pickett Road, McKinleyville
 Location: Men's Restroom
 Official Responsible: Owner
 Consent Decree: No Paragraph: M.51 Dwg: 1 of 1
 Barrier Area: Restrooms Remediation: Required
 Barrier Type: Floor Slope



Barrier Description: Maximum slope of the floor exceeds 2% in any direction

Code References: CBC 11B-302.1 and 2010 ADAS 302.1

As Built Description: 5.6% slope towards drain

Proposed Solution: Provide level floor when remodeling

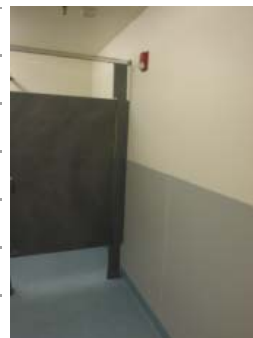
As-Built Meas: 110 Quantity: SF Cost Estimate: \$63,250.00 BSR: 4 Low Severity

X Coordinate: N/A Y Coordinate: N/A Z Coordinate: N/A

Implementation: Priority 3 Phase Date Status Open

Notes:

Field Date: 8/17/2017 Report Date: 10/6/2017 Barrier #: 17K
 Facility: McKinleyville Library - 1606 Pickett Road, McKinleyville
 Location: Men's Restroom
 Official Responsible: Owner
 Consent Decree: No Paragraph: M.51 Dwg: 1 of 1
 Barrier Area: Alarms Remediation: Required
 Barrier Type: Strobe - Location below 80"



Barrier Description: Strobe mounted below 80" AFF

Code References: NFPA 72 7.5.4.1

As Built Description: 77" high to bottom of the lens. Strobe too close to eye level and could result in seizures

Proposed Solution: Relocate strobe to compliant height

As-Built Meas: 1 Quantity: EACH Cost Estimate: \$5,500.00 BSR: 1 Necessary

X Coordinate: N/A Y Coordinate: N/A Z Coordinate: N/A

Implementation: Priority 3 Phase Date Status Safe Harbor

Notes: 11B-215.1 General. Where fire alarm systems and carbon monoxide alarm systems provide audible alarm coverage, alarms shall comply with Section 11B-215. Exception: In existing facilities, visible alarms/or fire alarm systems shall not be required except where an existing fire alarm system is upgraded or replaced, or a new fire alarm system is installed.

Field Date: 8/17/2017 Report Date: 10/6/2017 Barrier #: 17L
 Facility: McKinleyville Library - 1606 Pickett Road, McKinleyville
 Location: Men's Restroom
 Official Responsible: Owner
 Consent Decree: No Paragraph: M.51 Dwg: 1 of 1
 Barrier Area: Restrooms Remediation: Required
 Barrier Type: Stall Door Clearance Pull Side - 18"



Barrier Description: Door lacks min. 18" strike edge clearance at pull side

Code References: CBC Figure 11B-404.2.4.1 and 2010 ADAS 404.2.4.1

As Built Description: 6-1/4" strike edge clearance at pull side of stall door

Proposed Solution: Replace compartment

As-Built Meas: 1 Quantity: EACH Cost Estimate: \$2,250.00 BSR: 1 Necessary

X Coordinate: N/A Y Coordinate: N/A Z Coordinate: N/A

Implementation: Priority 3 Phase Date Status Open

Notes:

Field Date: 8/17/2017 Report Date: 10/6/2017 Barrier #: 17M

Facility: McKinleyville Library - 1606 Pickett Road, McKinleyville

Location: Men's Restroom

Official Responsible: Owner

Consent Decree: No Paragraph: M.51 Dwg: 1 of 1

Barrier Area: Restrooms Remediation: Required

Barrier Type: Self-closing Door



Barrier Description: Stall door or restroom entry door not equipped with a closing device

Code References: CBC 11B-604.8.1.2 and 2010 ADAS 603.8.1.2

As Built Description: Stall door not self-closing

Proposed Solution: Replace compartment hinge with adjustable mechanism

As-Built Meas: 1 Quantity: JOB Cost Estimate: \$240.00 BSR: 2 Recommended

X Coordinate: N/A Y Coordinate: N/A Z Coordinate: N/A

Implementation: Priority 3 Phase Date Status Open

Notes:

Field Date: 8/17/2017 Report Date: 10/6/2017 Barrier #: 17N

Facility: McKinleyville Library - 1606 Pickett Road, McKinleyville

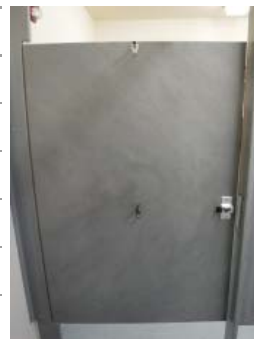
Location: Men's Restroom

Official Responsible: Owner

Consent Decree: No Paragraph: M.51 Dwg: 1 of 1

Barrier Area: Restrooms Remediation: Required

Barrier Type: Stall Door Hardware - Inner U-pull



Barrier Description: Inside of compartment door lacks a loop or U-pull below latch

Code References: CBC 11B-604.8.1.2 and 2010 ADAS 603.8.1.2

As Built Description: No u-pull provided on inside of door

Proposed Solution: Provide compliant hardware

As-Built Meas: 1 Quantity: EACH Cost Estimate: \$300.00 BSR: 1 Necessary

X Coordinate: N/A Y Coordinate: N/A Z Coordinate: N/A

Implementation: Priority 3 Phase Date Status Open

Notes:

Field Date: 8/17/2017 Report Date: 10/6/2017 Barrier #: 170

Facility: McKinleyville Library - 1606 Pickett Road, McKinleyville

Location: Men's Restroom

Official Responsible: Owner

Consent Decree: No Paragraph: M.51 Dwg: 1 of 1

Barrier Area: Restrooms Remediation: Required

Barrier Type: Stall - Side Door 60" Space



Barrier Description: Stall with side-opening door lacks min. 60" deep space in front of toilet

Code References: CBC 11B-604.8.1.1.2

As Built Description: 57" wide stall due to wall furr out to provide a compliant toilet centerline at 17-1/2"

Proposed Solution: Remodel toilet room to provide min. 60" wide wheelchair accessible toilet stall

As-Built Meas: 0 Quantity: JOB Cost Estimate: \$0.00 BSR: 2 Recommended

X Coordinate: N/A Y Coordinate: N/A Z Coordinate: N/A

Implementation: Priority 3 Phase Date Status Open

Notes:

Field Date: 8/17/2017 Report Date: 10/6/2017 Barrier #: 17P

Facility: McKinleyville Library - 1606 Pickett Road, McKinleyville

Location: Men's Restroom

Official Responsible: Owner

Consent Decree: No Paragraph: M.51 Dwg: 1 of 1

Barrier Area: Restrooms Remediation: Required

Barrier Type: Changing Table in Stall



Barrier Description: Changing table surface located within wheelchair accessible stall located in multi-accommodation toilet room

Code References: CBC Section-11B-226.4

As Built Description: Table located in stall

Proposed Solution: Move changing table to a location outside of stall

As-Built Meas: 1 Quantity: EACH Cost Estimate: \$775.00 BSR: 3 Hindrance

X Coordinate: N/A Y Coordinate: N/A Z Coordinate: N/A

Implementation: Priority 3 Phase Date Status Open

Notes:

Field Date: 8/17/2017 Report Date: 10/6/2017 Barrier #: 17Q

Facility: McKinleyville Library - 1606 Pickett Road, McKinleyville

Location: Men's Restroom

Official Responsible: Owner

Consent Decree: No Paragraph: M.51 Dwg: 1 of 1

Barrier Area: Restrooms Remediation: Required

Barrier Type: Changing Table - Surface Height



Barrier Description: Table surface when open not between 28" and 34" high

Code References: CBC 11B-226.4

As Built Description: 36-1/4" high

Proposed Solution: Remount existing changing table

As-Built Meas: 0 Quantity: EACH Cost Estimate: \$0.00 BSR: 3 Hindrance

X Coordinate: N/A Y Coordinate: N/A Z Coordinate: N/A

Implementation: Priority 3 Phase Date Status Open

Notes:

Field Date: 8/17/2017 Report Date: 10/6/2017 Barrier #: 17R

Facility: McKinleyville Library - 1606 Pickett Road, McKinleyville

Location: Men's Restroom

Official Responsible: Owner

Consent Decree: No Paragraph: M.51 Dwg: 1 of 1

Barrier Area: Restrooms Remediation: Required

Barrier Type: WC - Rear Grab Bar Location



Barrier Description: Rear grab bar not centered 12" from wall and 24" on the other side of WC

Code References: CBC 11B-604.5.2 and 2010 ADAS 604.5.2

As Built Description: 16" OC and installed at 2-1/2" from side wall

Proposed Solution: Provide compliant grab bars with required reinforcement

As-Built Meas: 1 Quantity: JOB Cost Estimate: \$1,450.00 BSR: 3 Hindrance

X Coordinate: N/A Y Coordinate: N/A Z Coordinate: N/A

Implementation: Priority 3 Phase Date Status Open

Notes:

Field Date: 8/17/2017 Report Date: 10/6/2017 Barrier #: 17S
 Facility: McKinleyville Library - 1606 Pickett Road, McKinleyville
 Location: Men's Restroom
 Official Responsible: Owner
 Consent Decree: No Paragraph: M.51 Dwg: 1 of 1
 Barrier Area: Restrooms Remediation: Required
 Barrier Type: WC - Rear Grab Bar Distance to Object



Barrier Description: Rear grab bar not located at least 1-1/2" from any object

Code References: CBC 11B-604.5 & 609.3 and 2010 ADAS 604.5 & 609.3

As Built Description: 1/2" between bar and tank

Proposed Solution: Provide compliant grab bars with required reinforcement

As-Built Meas: 0 Quantity: JOB Cost Estimate: \$0.00 BSR: 3 Hindrance

X Coordinate: N/A Y Coordinate: N/A Z Coordinate: N/A

Implementation: Priority 3 Phase Date Status Open

Notes:

Field Date: 12/8/2017 Report Date: 10/2/2019 Barrier #: 17T
 Facility: McKinleyville Library - 1606 Pickett Road, McKinleyville
 Location: Men's Restroom
 Official Responsible: Karen Clower, ADA Coordinator
 Consent Decree: Yes Paragraph: J.6.a.i. - DOJ# 1 Dwg: 1 of 1
 Barrier Area: Restrooms Remediation: N/A
 Barrier Type: WC - Centerline



Barrier Description: Water closet centerline not between 17" and 18" measured on center from wall

Code References: CBC 11B-604.2 (2010 ADAS 604.2 less stringent)

As Built Description: Wall was furled out. Toilet centerline now 17-1/2" on center.

Proposed Solution: Barrier removed

As-Built Meas: 0 Quantity: JOB Cost Estimate: \$0.00 BSR: 3 Hindrance

X Coordinate: N/A Y Coordinate: N/A Z Coordinate: N/A

Implementation: Priority 3 Phase Date Status Closed

Notes:

Field Date: 8/17/2017 Report Date: 10/6/2017 Barrier #: 17U
 Facility: McKinleyville Library - 1606 Pickett Road, McKinleyville
 Location: Men's Restroom
 Official Responsible: Owner
 Consent Decree: No Paragraph: M.51 Dwg: 1 of 1
 Barrier Area: Restrooms Remediation: Required
 Barrier Type: Toilet Paper Dispenser - Centerline



Barrier Description: Centerline of toilet tissue dispenser not within 7" to 9" toilet seat front edge

Code References: CBC 11B-604.7 and 2010 ADAS 604.7

As Built Description: 14" from rim

Proposed Solution: Reposition or replace toilet paper dispenser

As-Built Meas: 1 Quantity: EACH Cost Estimate: \$225.00 BSR: 3 Hindrance

X Coordinate: N/A Y Coordinate: N/A Z Coordinate: N/A

Implementation: Priority 3 Phase Date Status Open

Notes:

Field Date: 8/17/2017 Report Date: 10/6/2017 Barrier #: 17V
 Facility: McKinleyville Library - 1606 Pickett Road, McKinleyville
 Location: Men's Restroom
 Official Responsible: Owner
 Consent Decree: No Paragraph: M.51 Dwg: 1 of 1
 Barrier Area: Restrooms Remediation: Required
 Barrier Type: Toilet Paper Dispenser - Height



Barrier Description: Toilet tissue dispenser outlet not mounted no lower than 19" from floor

Code References: CBC 11B-604.7 (2010 ADAS 604.7 less stringent)

As Built Description: 23" from floor

Proposed Solution: Reposition or replace toilet paper dispenser

As-Built Meas: 0 Quantity: EACH Cost Estimate: \$0.00 BSR: 3 Hindrance

X Coordinate: N/A Y Coordinate: N/A Z Coordinate: N/A

Implementation: Priority 3 Phase Date Status Open

Notes:

Field Date: 12/8/2017 Report Date: 10/2/2019 Barrier #: 17W
 Facility: McKinleyville Library - 1606 Pickett Road, McKinleyville
 Location: Men's Restroom
 Official Responsible: Karen Clower, ADA Coordinator
 Consent Decree: Yes Paragraph: J.6.a.i. - DOJ# 1 Dwg: 1 of 1
 Barrier Area: Controls and Mechanisms Remediation: N/A
 Barrier Type: Clothing Hook or Rod - Height



Barrier Description: Clothing hooks not max. 48" high AFF

Code References: CBC 11B-308.2.1 and 2010 ADAS 308.2.1

As Built Description: Additional coat hook installed at 37" high inside toilet compartment

Proposed Solution: Barrier removed

As-Built Meas: 0 Quantity: EACH Cost Estimate: \$0.00 BSR: 2 Recommended

X Coordinate: N/A Y Coordinate: N/A Z Coordinate: N/A

Implementation: Priority 3 Phase Date Status Closed

Notes:

Field Date: 12/8/2017 Report Date: 10/2/2019 Barrier #: 18A
 Facility: McKinleyville Library - 1606 Pickett Road, McKinleyville
 Location: Women's Restroom
 Official Responsible: Karen Clower, ADA Coordinator
 Consent Decree: Yes Paragraph: J.6.a.ii. - DOJ 2A Dwg: 1 of 1
 Barrier Area: Restrooms Remediation: N/A
 Barrier Type: Sign - Braille/tactile Information



Barrier Description: No sign with Braille/Tactile information provided to identify restroom

Code References: CBC 11B-216.2 and ADAS 216.2

As Built Description: Sign has been replaced. New sign complies.

Proposed Solution: Barrier removed

As-Built Meas: 0 Quantity: EACH Cost Estimate: \$0.00 BSR: 1 Necessary

X Coordinate: N/A Y Coordinate: N/A Z Coordinate: N/A

Implementation: Priority 3 Phase Date Status Closed

Notes: Original door assembly was fire-rated. Since 2005, the door has been replaced with a non-fire rated door

Field Date: 8/17/2017 Report Date: 10/6/2017 Barrier #: 18B
 Facility: McKinleyville Library - 1606 Pickett Road, McKinleyville
 Location: Women's Restroom
 Official Responsible: Karen Clower, ADA Coordinator
 Consent Decree: No Paragraph: M.51 Dwg: 1 of 1
 Barrier Area: Signage Remediation: Recommended
 Barrier Type: Sign - Sharp Edges



Barrier Description: Signs that are designed to be read by touch has sharp or abrasive edges

Code References: CBC 11B-703.2 Advisory and 2010 ADAS 703.2 Advisory

As Built Description: New sign with tactile information has sharp edges

Proposed Solution: Replace existing sign or sand edges

As-Built Meas: 1 Quantity: EACH Cost Estimate: \$250.00 BSR: 1 Necessary

X Coordinate: N/A Y Coordinate: N/A Z Coordinate: N/A

Implementation: Priority 3 Phase Date Status Closed

Notes:

Field Date: 12/8/2017 Report Date: 10/2/2019 Barrier #: 18C
 Facility: McKinleyville Library - 1606 Pickett Road, McKinleyville
 Location: Women's Restroom
 Official Responsible: Karen Clower, ADA Coordinator
 Consent Decree: No Paragraph: M.51 Dwg: 1 of 1
 Barrier Area: Doors or Gates Remediation: N/A
 Barrier Type: Door Closer - Interior Automatic Device



Barrier Description: Door opening force exceeds 5 lbf

Code References: CBC 11B-404.2.9 and 2010 ADAS 404.2.9

As Built Description: Automatic door opening device installed

Proposed Solution: Barrier removed

As-Built Meas: 0 Quantity: EACH Cost Estimate: \$0.00 BSR: 1 Necessary

X Coordinate: N/A Y Coordinate: N/A Z Coordinate: N/A

Implementation: Priority 3 Phase Date Status Closed

Notes: Original door assembly was fire-rated (door and frame). Since 2005, the door has been replaced with a non-fire rated door.

Field Date: 12/8/2017 Report Date: 10/2/2019 Barrier #: 18D

Facility: McKinleyville Library - 1606 Pickett Road, McKinleyville

Location: Women's Restroom

Official Responsible: Karen Clower, ADA Coordinator

Consent Decree: No Paragraph: M.51 Dwg: 1 of 1

Barrier Area: Doors or Gates Remediation: N/A

Barrier Type: Door Closer - Interior Sweep



Barrier Description: Door closer lacks min. 5 second sweep period/back check

Code References: CBC 11B-404.2.8.1 and ADA/ABA 404.2.8.1

As Built Description: Automatic door opening device installed

Proposed Solution: Barrier removed

As-Built Meas: 0 Quantity: EACH Cost Estimate: \$0.00 BSR: 2 Recommended

X Coordinate: N/A Y Coordinate: N/A Z Coordinate: N/A

Implementation: Priority 3 Phase Date Status Closed

Notes:

Field Date: 8/17/2017 Report Date: 10/6/2017 Barrier #: 18E

Facility: McKinleyville Library - 1606 Pickett Road, McKinleyville

Location: Women's Restroom

Official Responsible: Owner

Consent Decree: No Paragraph: M.51 Dwg: 1 of 1

Barrier Area: Doors or Gates Remediation: Required

Barrier Type: Door 10" Bottom Surface



Barrier Description: Door/Gate lacks min. 10" smooth uninterrupted bottom surface

Code References: CBC 11B-404.2.10 and 2010 ADAS 404.2.10

As Built Description: Door stop located within bottom 10" of door

Proposed Solution: Remove door stop or any other element within bottom 10" of door

As-Built Meas: 1 Quantity: EACH Cost Estimate: \$225.00 BSR: 1 Necessary

X Coordinate: N/A Y Coordinate: N/A Z Coordinate: N/A

Implementation: Priority 3 Phase Date Status Open

Notes:

Field Date: 8/17/2017 Report Date: 10/6/2017 Barrier #: 18F

Facility: McKinleyville Library - 1606 Pickett Road, McKinleyville

Location: Women's Restroom

Official Responsible: Owner

Consent Decree: No Paragraph: M.51 Dwg: 1 of 1

Barrier Area: Restrooms Remediation: Required

Barrier Type: Dispensers - Protruding Object



Barrier Description: Dispenser creates protruding object in path of travel

Code References: CBC 11B-307.2 and 2010 ADAS 307.2

As Built Description: Paper towel dispenser protrudes 7-1/2" at 38-3/8" high

Proposed Solution: Relocate/remount dispenser or provide detectable warning

As-Built Meas: 1 Quantity: EACH Cost Estimate: \$125.00 BSR: 2 Recommended

X Coordinate: N/A Y Coordinate: N/A Z Coordinate: N/A

Implementation: Priority 3 Phase Date Status Open

Notes:

Field Date: 8/17/2017 Report Date: 10/6/2017 Barrier #: 18G

Facility: McKinleyville Library - 1606 Pickett Road, McKinleyville

Location: Women's Restroom

Official Responsible: Owner

Consent Decree: No Paragraph: M.51 Dwg: 1 of 1

Barrier Area: Restrooms Remediation: Required

Barrier Type: Lavatory - Knee Clearance



Barrier Description: Lavatory bottom apron/edge not max 29" reducing to 27" at 8" back from edge

Code References: CBC 11B-606.2 and 2010 ADAS 606.2

As Built Description: 26-1/2" at 8" back from edge at both lavatories

Proposed Solution: Provide min. 1 accessible lavatory

As-Built Meas: 1 Quantity: JOB Cost Estimate: \$450.00 BSR: 1 Necessary

X Coordinate: N/A Y Coordinate: N/A Z Coordinate: N/A

Implementation: Priority 3 Phase Date Status Open

Notes:

Field Date: 8/17/2017 Report Date: 10/6/2017 Barrier #: 18H

Facility: McKinleyville Library - 1606 Pickett Road, McKinleyville

Location: Women's Restroom

Official Responsible: Owner

Consent Decree: No Paragraph: M.51 Dwg: 1 of 1

Barrier Area: Restrooms Remediation: Required

Barrier Type: Lavatory - Centerline



Barrier Description: Lavatory adjacent to wall not min. 18" to the centerline of fixture

Code References: CBC 11B-606.6

As Built Description: 13-1/2" OC but lavatory at right has a compliant centerline

Proposed Solution: Provide min. 1 accessible lavatory

As-Built Meas: 0 Quantity: JOB Cost Estimate: \$0.00 BSR: 2 Recommended

X Coordinate: N/A Y Coordinate: N/A Z Coordinate: N/A

Implementation: Priority 3 Phase Date Status Open

Notes:

Field Date: 8/17/2017 Report Date: 10/6/2017 Barrier #: 18I

Facility: McKinleyville Library - 1606 Pickett Road, McKinleyville

Location: Women's Restroom

Official Responsible: Owner

Consent Decree: No Paragraph: M.51 Dwg: 1 of 1

Barrier Area: Restrooms Remediation: Required

Barrier Type: Floor Slope



Barrier Description: Maximum slope of the floor exceeds 2% in any direction

Code References: CBC 11B-302.1 and 2010 ADAS 302.1

As Built Description: 8.5% slope in lavatory clear floor space at accessible lavatory

Proposed Solution: Provide level floor when remodeling

As-Built Meas: 60 Quantity: SF Cost Estimate: \$34,500.00 BSR: 4 Low Severity

X Coordinate: N/A Y Coordinate: N/A Z Coordinate: N/A

Implementation: Priority 3 Phase Date Status Open

Notes:

Field Date: 8/17/2017 Report Date: 10/6/2017 Barrier #: 18J
 Facility: McKinleyville Library - 1606 Pickett Road, McKinleyville
 Location: Women's Restroom
 Official Responsible: Karen Clower, ADA Coordinator
 Consent Decree: No Paragraph: M.51 Dwg: 1 of 1
 Barrier Area: Alarms Remediation: Required
 Barrier Type: Strobe - Location below 80"



Barrier Description: Strobe mounted below 80" AFF

Code References: NFPA 72 7.5.4.1

As Built Description: 77" high to bottom of the lens. Strobe too close to eye level and could result in seizures

Proposed Solution: Relocate strobe to compliant height

As-Built Meas: 1 Quantity: EACH Cost Estimate: \$5,500.00 BSR: 1 Necessary

X Coordinate: N/A Y Coordinate: N/A Z Coordinate: N/A

Implementation: Priority 3 Phase Date Status Safe Harbor

Notes: 11B-215.1 General. Where fire alarm systems and carbon monoxide alarm systems provide audible alarm coverage, alarms shall comply with Section 118-215. Exception: In existing facilities, visible alarms/or fire alarm systems shall not be required except where an existing fire alarm system is upgraded or replaced, or a new fire alarm system is installed.

Field Date: 8/17/2017 Report Date: 10/6/2017 Barrier #: 18K
 Facility: McKinleyville Library - 1606 Pickett Road, McKinleyville
 Location: Women's Restroom
 Official Responsible: Owner
 Consent Decree: No Paragraph: M.51 Dwg: 1 of 1
 Barrier Area: Restrooms Remediation: Required
 Barrier Type: Stall Door Clearance Pull Side - 18"



Barrier Description: Door lacks min. 18" strike edge clearance at pull side

Code References: CBC Figure 11B-404.2.4.1 and 2010 ADAS 404.2.4.1

As Built Description: 6-1/4" strike edge clearance at pull side of stall door

Proposed Solution: Replace compartment

As-Built Meas: 1 Quantity: EACH Cost Estimate: \$2,250.00 BSR: 1 Necessary

X Coordinate: N/A Y Coordinate: N/A Z Coordinate: N/A

Implementation: Priority 3 Phase Date Status Open

Notes:

Field Date: 8/17/2017 Report Date: 10/6/2017 Barrier #: 18L
 Facility: McKinleyville Library - 1606 Pickett Road, McKinleyville
 Location: Women's Restroom
 Official Responsible: Owner
 Consent Decree: No Paragraph: M.51 Dwg: 1 of 1
 Barrier Area: Restrooms Remediation: Required
 Barrier Type: Self-closing Door



Barrier Description: Stall door or restroom entry door not equipped with a closing device

Code References: CBC 11B-604.8.1.2 and 2010 ADAS 603.8.1.2

As Built Description: Stall door not self-closing

Proposed Solution: Replace compartment hinge with adjustable mechanism

As-Built Meas: 1 Quantity: JOB Cost Estimate: \$240.00 BSR: 2 Recommended

X Coordinate: N/A Y Coordinate: N/A Z Coordinate: N/A

Implementation: Priority 3 Phase Date Status Open

Notes:

Field Date: 8/17/2017 Report Date: 10/6/2017 Barrier #: 18M
 Facility: McKinleyville Library - 1606 Pickett Road, McKinleyville
 Location: Women's Restroom
 Official Responsible: Owner
 Consent Decree: No Paragraph: M.51 Dwg: 1 of 1
 Barrier Area: Restrooms Remediation: Required
 Barrier Type: Stall Door Hardware - Inner U-pull



Barrier Description: Inside of compartment door lacks a loop or U-pull below latch

Code References: CBC 11B-604.8.1.2 and 2010 ADAS 603.8.1.2

As Built Description: No u-pull provided on inside of door

Proposed Solution: Provide compliant hardware

As-Built Meas: 1 Quantity: EACH Cost Estimate: \$300.00 BSR: 1 Necessary

X Coordinate: N/A Y Coordinate: N/A Z Coordinate: N/A

Implementation: Priority 3 Phase Date Status Open

Notes:

Field Date: 8/17/2017 Report Date: 10/6/2017 Barrier #: 18N

Facility: McKinleyville Library - 1606 Pickett Road, McKinleyville

Location: Women's Restroom

Official Responsible: Owner

Consent Decree: No Paragraph: M.51 Dwg: 1 of 1

Barrier Area: Restrooms Remediation: Required

Barrier Type: Stall Compartment

Barrier Description: Stall compartment not min. 60" wide

Code References: CBC 11B-604.3.1 and 11B-604.8.1.1

As Built Description: 57" wide due to wall fur out to provide toilet centerline at 17-1/2"

Proposed Solution: Remodel toilet room to provide wheelchair access

As-Built Meas: 110 Quantity: SF Cost Estimate: \$63,250.00 BSR: 3 Hindrance

X Coordinate: N/A Y Coordinate: N/A Z Coordinate: N/A

Implementation: Priority 3 Phase Date Status Open

Notes:



Field Date: 8/17/2017 Report Date: 10/6/2017 Barrier #: 18O

Facility: McKinleyville Library - 1606 Pickett Road, McKinleyville

Location: Women's Restroom

Official Responsible: Owner

Consent Decree: No Paragraph: M.51 Dwg: 1 of 1

Barrier Area: Restrooms Remediation: Required

Barrier Type: Changing Table in Stall

Barrier Description: Changing table surface located within wheelchair accessible stall located in multi-accommodation toilet room

Code References: CBC Section-11B-226.4

As Built Description: Table located in stall

Proposed Solution: Move changing table to a location outside of stall

As-Built Meas: 1 Quantity: EACH Cost Estimate: \$775.00 BSR: 3 Hindrance

X Coordinate: N/A Y Coordinate: N/A Z Coordinate: N/A

Implementation: Priority 3 Phase Date Status Open

Notes:



Field Date: 8/17/2017 Report Date: 10/6/2017 Barrier #: 18P

Facility: McKinleyville Library - 1606 Pickett Road, McKinleyville

Location: Women's Restroom

Official Responsible: Owner

Consent Decree: No Paragraph: M.51 Dwg: 1 of 1

Barrier Area: Restrooms Remediation: Required

Barrier Type: Changing Table - Surface Height



Barrier Description: Table surface when open not between 28" and 34" high

Code References: CBC 11B-226.4

As Built Description: 36-1/8" high

Proposed Solution: Remount existing changing table

As-Built Meas: 0 Quantity: EACH Cost Estimate: \$0.00 BSR: 3 Hindrance

X Coordinate: N/A Y Coordinate: N/A Z Coordinate: N/A

Implementation: Priority 3 Phase Date Status Open

Notes:

Field Date: 8/17/2017 Report Date: 10/6/2017 Barrier #: 18Q

Facility: McKinleyville Library - 1606 Pickett Road, McKinleyville

Location: Women's Restroom

Official Responsible: Owner

Consent Decree: No Paragraph: M.51 Dwg: 1 of 1

Barrier Area: Restrooms Remediation: Required

Barrier Type: WC - Rear Grab Bar Location



Barrier Description: Rear grab bar not centered 12" from wall and 24" on the other side of WC

Code References: CBC 11B-604.5.2 and 2010 ADAS 604.5.2

As Built Description: 16" OC and installed at 2-1/2" from side wall

Proposed Solution: Provide compliant grab bars with required reinforcement

As-Built Meas: 1 Quantity: JOB Cost Estimate: \$1,450.00 BSR: 3 Hindrance

X Coordinate: N/A Y Coordinate: N/A Z Coordinate: N/A

Implementation: Priority 3 Phase Date Status Open

Notes:

Field Date: 8/17/2017 Report Date: 10/6/2017 Barrier #: 18R
Facility: McKinleyville Library - 1606 Pickett Road, McKinleyville
Location: Women's Restroom
Official Responsible: Owner
Consent Decree: No Paragraph: M.51 Dwg: 1 of 1
Barrier Area: Restrooms Remediation: Required
Barrier Type: WC - Rear Grab Bar Distance to Object



Barrier Description: Rear grab bar not located at least 1-1/2" from any object

Code References: CBC 11B-604.5 & 609.3 and 2010 ADAS 604.5 & 609.3

As Built Description: Rear grab bar installed on top of flushometer blocking use of grab bar

Proposed Solution: Provide compliant grab bars with required reinforcement

As-Built Meas: 1 Quantity: JOB Cost Estimate: \$1,450.00 BSR: 3 Hindrance

X Coordinate: N/A Y Coordinate: N/A Z Coordinate: N/A

Implementation: Priority 3 Phase Date Status Open

Notes:

Field Date: 12/8/2017 Report Date: 10/2/2019 Barrier #: 18S
Facility: McKinleyville Library - 1606 Pickett Road, McKinleyville
Location: Women's Restroom
Official Responsible: Karen Clower, ADA Coordinator
Consent Decree: Yes Paragraph: J.6.a.ii. - DOJ# 2 Dwg: 1 of 1
Barrier Area: Restrooms Remediation: N/A
Barrier Type: WC - Centerline



Barrier Description: Water closet centerline not between 17" and 18" measured on center from wall

Code References: CBC 11B-604.2 (2010 ADAS 604.2 less stringent)

As Built Description: Wall was furred out. Toilet centerline now 17-1/2" on center.

Proposed Solution: Barrier removed

As-Built Meas: 0 Quantity: JOB Cost Estimate: \$0.00 BSR: 3 Hindrance

X Coordinate: N/A Y Coordinate: N/A Z Coordinate: N/A

Implementation: Priority 3 Phase Date Status Closed

Notes:

Field Date: 8/17/2017 Report Date: 10/6/2017 Barrier #: 18T

Facility: McKinleyville Library - 1606 Pickett Road, McKinleyville

Location: Women's Restroom

Official Responsible: Owner

Consent Decree: No Paragraph: M.51 Dwg: 1 of 1

Barrier Area: Restrooms Remediation: Required

Barrier Type: Toilet Paper Dispenser - Centerline



Barrier Description: Centerline of toilet tissue dispenser not within 7" to 9" toilet seat front edge

Code References: CBC 11B-604.7 and 2010 ADAS 604.7

As Built Description: 14" from rim

Proposed Solution: Reposition or replace toilet paper dispenser

As-Built Meas: 1 Quantity: EACH Cost Estimate: \$225.00 BSR: 3 Hindrance

X Coordinate: N/A Y Coordinate: N/A Z Coordinate: N/A

Implementation: Priority 3 Phase Date Status Open

Notes:

Field Date: 8/17/2017 Report Date: 10/6/2017 Barrier #: 18U

Facility: McKinleyville Library - 1606 Pickett Road, McKinleyville

Location: Women's Restroom

Official Responsible: Owner

Consent Decree: No Paragraph: M.51 Dwg: 1 of 1

Barrier Area: Restrooms Remediation: Required

Barrier Type: Toilet Paper Dispenser - Height



Barrier Description: Toilet tissue dispenser outlet not mounted no lower than 19" from floor

Code References: CBC 11B-604.7 (2010 ADAS 604.7 less stringent)

As Built Description: 23" from floor

Proposed Solution: Reposition or replace toilet paper dispenser

As-Built Meas: 0 Quantity: EACH Cost Estimate: \$0.00 BSR: 3 Hindrance

X Coordinate: N/A Y Coordinate: N/A Z Coordinate: N/A

Implementation: Priority 3 Phase Date Status Open

Notes:

Field Date:	12/8/2017	Report Date:	10/2/2019	Barrier #:	18V
Facility:	McKinleyville Library - 1606 Pickett Road, McKinleyville				
Location:	Women's Restroom				
Official Responsible:	Karen Clower, ADA Coordinator				
Consent Decree:	Yes	Paragraph:	J.6.a.ii. - DOJ# 2	Dwg:	1 of 1
Barrier Area:	Controls and Mechanisms		Remediation: N/A		
Barrier Type:	Clothing Hook or Rod - Height				
Barrier Description:	Clothing hooks not max. 48" high AFF				
Code References:	CBC 11B-308.2.1 and 2010 ADAS 308.2.1				
As Built Description:	Additional coat hook installed at 36-1/2" high				
Proposed Solution:	Barrier removed				
As-Built Meas:	0	Quantity:	EACH	Cost Estimate:	\$0.00
X Coordinate:	N/A	Y Coordinate:	N/A	Z Coordinate:	N/A
Implementation:	Priority	3	Phase	Date	Status Closed
Notes:					



Field Date:	8/17/2017	Report Date:	10/6/2017	Barrier #:	19A
Facility:	McKinleyville Library - 1606 Pickett Road, McKinleyville				
Location:	Conference Room				
Official Responsible:	Karen Clower, ADA Coordinator				
Consent Decree:	No	Paragraph:	M.51	Dwg:	1 of 1
Barrier Area:	Signage		Remediation: Required		
Barrier Type:	Room ID Sign - No Tactile Information				
Barrier Description:	Room ID sign provided for sighted people lacks tactile info for the visually impaired				
Code References:	CBC 11B-216.2 and 2010 ADAS 216.2				
As Built Description:	No tactile information provided where visual sign exists				
Proposed Solution:	Provide room ID sign with tactile information at wall at latch side of door				
As-Built Meas:	1	Quantity:	EACH	Cost Estimate:	\$250.00
X Coordinate:	N/A	Y Coordinate:	N/A	Z Coordinate:	N/A
Implementation:	Priority	4	Phase	Date	Status Open
Notes:					



Field Date: 8/17/2017 Report Date: 10/6/2017 Barrier #: 19B

Facility: McKinleyville Library - 1606 Pickett Road, McKinleyville

Location: Conference Room

Official Responsible: Owner

Consent Decree: No Paragraph: M.51 Dwg: 1 of 1

Barrier Area: Controls and Mechanisms Remediation: Required

Barrier Type: Electrical Outlets - Side Reach Low Unobstructed



Barrier Description: Electrical outlet control box not min. 15" high measured to the bottom of the outlet box

Code References: CBC 11B-308.1.2, 11B-308.3.1 and 2010 ADAS 308.3

As Built Description: 12" high at bottom edge

Proposed Solution: Relocate switch box to min. 15" high at the bottom of the outlet box

As-Built Meas: 1 Quantity: EACH Cost Estimate: \$750.00 BSR: 3 Hindrance

X Coordinate: N/A Y Coordinate: N/A Z Coordinate: N/A

Implementation: Priority 2 Phase Date Status Safe Harbor

Notes: Building constructed in 1997 meets 1991 standards.

Field Date: 8/17/2017 Report Date: 10/6/2017 Barrier #: 19C

Facility: McKinleyville Library - 1606 Pickett Road, McKinleyville

Location: Conference Room

Official Responsible: Owner

Consent Decree: No Paragraph: M.51 Dwg: 1 of 1

Barrier Area: Controls and Mechanisms Remediation: Required

Barrier Type: Electrical Outlets - Side Reach Obstructed (>10"-24")



Barrier Description: Electrical outlet between 10" to 24" deep over an obstruction max. 34" high is located above 46" high measured to top of outlet box

Code References: CBC 11B-308.1.2, 11B-308.3.2 and 2010 ADAS 308.3

As Built Description: 39" high over an obstruction of 26" deep

Proposed Solution: Relocate outlet top edge to max. 46" high top edge

As-Built Meas: 1 Quantity: EACH Cost Estimate: \$750.00 BSR: 3 Hindrance

X Coordinate: N/A Y Coordinate: N/A Z Coordinate: N/A

Implementation: Priority 2 Phase Date Status Safe Harbor

Notes: Building constructed in 1997 meets 1991 standards.

Field Date: 8/17/2017 Report Date: 10/6/2017 Barrier #: 19D

Facility: McKinleyville Library - 1606 Pickett Road, McKinleyville

Location: Conference Room

Official Responsible: Karen Clower, ADA Coordinator

Consent Decree: No Paragraph: M.51 Dwg: 1 of 1

Barrier Area: Counters and Tables Remediation: Required

Barrier Type: Workstation - Protruding Object

Barrier Description: Workstation creates protruding object in accessible route

Code References: CBC 11B-307 and 2010 ADAS 307

As Built Description: PC and standard workstations protrudes 25-1/4" at 27-3/4" - 28" high at 3 counters around the room

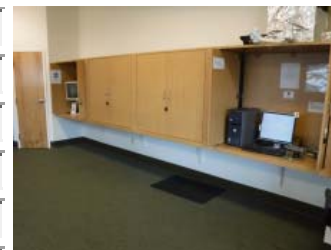
Proposed Solution: Remove workstation or provide detectable warning for the visually impaired

As-Built Meas: 3 Quantity: EACH Cost Estimate: \$1,500.00 BSR: 2 Necessary

X Coordinate: N/A Y Coordinate: N/A Z Coordinate: N/A

Implementation: Priority 2 Phase Date Status Open

Notes:



Field Date: 8/17/2017 Report Date: 10/6/2017 Barrier #: 19E

Facility: McKinleyville Library - 1606 Pickett Road, McKinleyville

Location: Conference Room

Official Responsible: Karen Clower, ADA Coordinator

Consent Decree: No Paragraph: M.51 Dwg: 1 of 1

Barrier Area: Controls and Mechanisms Remediation: Required

Barrier Type: Shelves or Cabinets - Storage

Barrier Description: Shelf or cabinet not mounted max. 48" above floor or ground (max. 54" at pre-ADA elements)

Code References: CBC 11B-811.3 and 2010 ADAS 811.3

As Built Description: Shelf or cabinet not accessible

Proposed Solution: Provide additional shelf/cabinet at accessible height or provide assistance

As-Built Meas: 1 Quantity: JOB Cost Estimate: \$0.00 BSR: 3 Hindrance

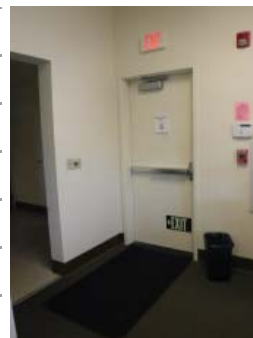
X Coordinate: N/A Y Coordinate: N/A Z Coordinate: N/A

Implementation: Priority 2 Phase Date Status Open

Notes:



Field Date: 8/17/2017 Report Date: 10/6/2017 Barrier #: 19F
 Facility: McKinleyville Library - 1606 Pickett Road, McKinleyville
 Location: Conference Room
 Official Responsible: Karen Clower, ADA Coordinator
 Consent Decree: No Paragraph: M.51 Dwg: 1 of 1
 Barrier Area: Signage Remediation: Required
 Barrier Type: Tactile Exit Sign - Exit



Barrier Description: Ground floor doors that exit to exterior not provided with signs stating "EXIT"

Code References: CBC 11B-216.4.1 & 11B-703 and 2010 ADAS 216.4.1

As Built Description: No tactile sign provided where required

Proposed Solution: Provide compliant sign at exit side of door

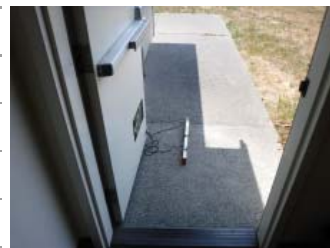
As-Built Meas: 1 Quantity: EACH Cost Estimate: \$250.00 BSR: 1 Necessary

X Coordinate: N/A Y Coordinate: N/A Z Coordinate: N/A

Implementation: Priority 4 Phase Date Status Open

Notes:

Field Date: 8/17/2017 Report Date: 10/6/2017 Barrier #: 19G
 Facility: McKinleyville Library - 1606 Pickett Road, McKinleyville
 Location: Conference Room
 Official Responsible: Owner
 Consent Decree: No Paragraph: M.51 Dwg: 1 of 1
 Barrier Area: Doors or Gates Remediation: Required
 Barrier Type: Door/Gate Landing - Slope 3.1% to 4.0%



Barrier Description: Door/Gate landing is not level on both sides of door (3.1% to 4.0%)

Code References: CBC 11B-404.2.4.4 and 2010 ADAS 404.2.4.4

As Built Description: 3.6% door landing slope

Proposed Solution: Demolish and reconstruct level landing

As-Built Meas: 0 Quantity: SF Cost Estimate: \$0.00 BSR: 3 Hindrance

X Coordinate: N/A Y Coordinate: N/A Z Coordinate: N/A

Implementation: Priority 2 Phase Date Status Open

Notes:

Field Date: 8/17/2017 Report Date: 10/6/2017 Barrier #: 19H

Facility: McKinleyville Library - 1606 Pickett Road, McKinleyville

Location: Conference Room

Official Responsible: Owner

Consent Decree: No Paragraph: M.51 Dwg: 1 of 1

Barrier Area: Doors or Gates Remediation: Required

Barrier Type: Door Closer - Exterior Adjustment

Barrier Description: Door opening force exceeds 5 lbf

Code References: CBC 11B-404.2.9

As Built Description: 9 lbf

Proposed Solution: Replace or adjust existing closer

As-Built Meas: 1 Quantity: EACH Cost Estimate: \$450.00 BSR: 1 Necessary

X Coordinate: N/A Y Coordinate: N/A Z Coordinate: N/A

Implementation: Priority 2 Phase Date Status Open

Notes:



Field Date: 8/17/2017 Report Date: 10/6/2017 Barrier #: 19I

Facility: McKinleyville Library - 1606 Pickett Road, McKinleyville

Location: Conference Room

Official Responsible: Owner

Consent Decree: No Paragraph: M.51 Dwg: 1 of 1

Barrier Area: Doors or Gates Remediation: Required

Barrier Type: Door Closer - Exterior Sweep

Barrier Description: Door closer lacks min. 5 second sweep period/back check

Code References: CBC 11B-404.2.8.1 and 2010 ADAS 404.2.8.1

As Built Description: 2 second sweep

Proposed Solution: Replace or adjust existing closer

As-Built Meas: 0 Quantity: EACH Cost Estimate: \$0.00 BSR: 2 Recommended

X Coordinate: N/A Y Coordinate: N/A Z Coordinate: N/A

Implementation: Priority 2 Phase Date Status Open

Notes:



Field Date: 8/17/2017 Report Date: 10/6/2017 Barrier #: 19J

Facility: McKinleyville Library - 1606 Pickett Road, McKinleyville

Location: Conference Room

Official Responsible: Owner

Consent Decree: No Paragraph: M.51 Dwg: 1 of 1

Barrier Area: Doors or Gates Remediation: Required

Barrier Type: Smooth Surface at Bottom - Doorstop



Barrier Description: Door/Gate has door stop that may create trap condition

Code References: CBC 11B-404.2.10 and 2010 ADAS 404.2.3, 404.2.10

As Built Description: Door stop located within bottom 10" of door

Proposed Solution: Remove door stop or any other element within bottom 10" of door

As-Built Meas: 1 Quantity: EACH Cost Estimate: \$50.00 BSR: 1 Necessary

X Coordinate: N/A Y Coordinate: N/A Z Coordinate: N/A

Implementation: Priority 2 Phase Date Status Open

Notes:

Field Date: 8/17/2017 Report Date: 10/6/2017 Barrier #: 19K

Facility: McKinleyville Library - 1606 Pickett Road, McKinleyville

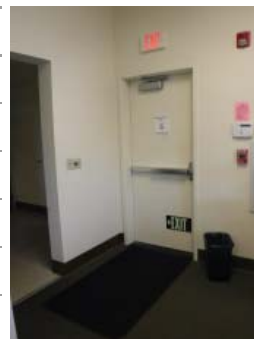
Location: Conference Room

Official Responsible: Karen Clower, ADA Coordinator

Consent Decree: No Paragraph: M.51 Dwg: 1 of 1

Barrier Area: Doors or Gates Remediation: Required

Barrier Type: Doormats



Barrier Description: Doormat not anchored to floor (trip hazard)

Code References: CBC 11B-302.2 and 2010 ADAS 302.2

As Built Description: Existing door mat not recessed or secured

Proposed Solution: Secure door mat or remove

As-Built Meas: 1 Quantity: EACH Cost Estimate: \$500.00 BSR: 1 Necessary

X Coordinate: N/A Y Coordinate: N/A Z Coordinate: N/A

Implementation: Priority 2 Phase Date Status Open

Notes: Mat does not provide equivalent facilitation when placed on carpet or slip-resistant surfaces

Field Date: 8/17/2017 Report Date: 10/6/2017 Barrier #: 20A

Facility: McKinleyville Library - 1606 Pickett Road, McKinleyville

Location: Librarian Office/Volunteer Workroom

Official Responsible: Karen Clower, ADA Coordinator

Consent Decree: No Paragraph: M.51 Dwg: 1 of 1

Barrier Area: Signage Remediation: Required

Barrier Type: Room ID Sign - No Tactile Information



Barrier Description: Room ID sign provided for sighted people lacks tactile info for the visually impaired

Code References: CBC 11B-216.2 and 2010 ADAS 216.2

As Built Description: No tactile information provided where visual sign exists

Proposed Solution: Provide room ID sign with tactile information at wall at latch side of door

As-Built Meas: 1 Quantity: EACH Cost Estimate: \$250.00 BSR: 1 Necessary

X Coordinate: N/A Y Coordinate: N/A Z Coordinate: N/A

Implementation: Priority 4 Phase Date Status Open

Notes: Original door assembly was fire-rated (door and frame). Since 2005, the door has been replaced with a non-fire rated door

Field Date: 8/17/2017 Report Date: 10/6/2017 Barrier #: 20B

Facility: McKinleyville Library - 1606 Pickett Road, McKinleyville

Location: Librarian Office/Volunteer Workroom

Official Responsible: Karen Clower, ADA Coordinator

Consent Decree: No Paragraph: M.51 Dwg: 1 of 1

Barrier Area: Doors or Gates Remediation: Required

Barrier Type: Maneuvering Cl - Front App/Push 12"



Barrier Description: Door/Gate with latch/closer at push side lacks min. 12" beyond latch side of door

Code References: CBC Figure 11B-404.2.4.1 and 2010 ADAS 404.2.4.1

As Built Description: 4-5/8" strike edge clearance at push side of door

Proposed Solution: Relocate door or gate or alter area to provide required maneuvering clearance

As-Built Meas: 1 Quantity: EACH Cost Estimate: \$2,250.00 BSR: 1 Necessary

X Coordinate: N/A Y Coordinate: N/A Z Coordinate: N/A

Implementation: Priority 2 Phase Date Status Open

Notes:

Field Date: 8/17/2017 Report Date: 10/6/2017 Barrier #: 20C

Facility: McKinleyville Library - 1606 Pickett Road, McKinleyville

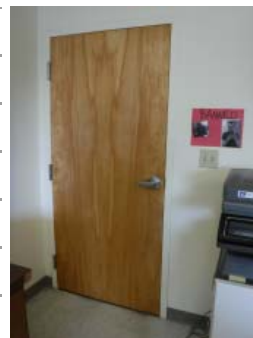
Location: Librarian Office/Volunteer Workroom

Official Responsible: Karen Clower, ADA Coordinator

Consent Decree: No Paragraph: M.51 Dwg: 1 of 1

Barrier Area: Doors or Gates Remediation: Required

Barrier Type: Maneuvering CI - Front App/Pull 60"



Barrier Description: Door/Gate at pull side lacks min. 60" perpendicular to door

Code References: CBC Figure 11B-404.2.4.1 and 2010 ADAS 404.2.4.1

As Built Description: 60" maneuvering clearance at pull side of door

Proposed Solution: Relocate door or gate or alter area to provide required maneuvering clearance

As-Built Meas: 0 Quantity: EACH Cost Estimate: \$0.00 BSR: 1 Necessary

X Coordinate: N/A Y Coordinate: N/A Z Coordinate: N/A

Implementation: Priority 2 Phase Date Status Open

Notes:

Field Date: 8/17/2017 Report Date: 10/6/2017 Barrier #: 20D

Facility: McKinleyville Library - 1606 Pickett Road, McKinleyville

Location: Librarian Office/Volunteer Workroom

Official Responsible: Owner

Consent Decree: No Paragraph: M.51 Dwg: 1 of 1

Barrier Area: Doors or Gates Remediation: Required

Barrier Type: Door/Gate Height - Existing



Barrier Description: Door/Gate clearance not min. 80" high

Code References: CBC 11B-404.2.3 & 11B-307.2 and 2010 ADAS 404.2.3 & 307.2

As Built Description: 79-1/2" door height

Proposed Solution: Replace door or gate

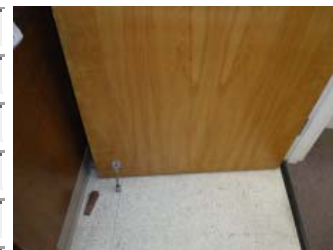
As-Built Meas: 1 Quantity: EACH Cost Estimate: \$2,250.00 BSR: 3 Hindrance

X Coordinate: N/A Y Coordinate: N/A Z Coordinate: N/A

Implementation: Priority 2 Phase Date Status Open

Notes:

Field Date: 8/17/2017 Report Date: 10/6/2017 Barrier #: 20E
 Facility: McKinleyville Library - 1606 Pickett Road, McKinleyville
 Location: Librarian Office/Volunteer Workroom
 Official Responsible: Owner
 Consent Decree: No Paragraph: M.51 Dwg: 1 of 1
 Barrier Area: Doors or Gates Remediation: Required
 Barrier Type: Smooth Surface at Bottom - Doorstop



Barrier Description: Door/Gate has door stop that may create trap condition

Code References: CBC 11B-404.2.10 and 2010 ADAS 404.2.3, 404.2.10

As Built Description: Door stop located within bottom 10" of door

Proposed Solution: Remove door stop or any other element within bottom 10" of door

As-Built Meas: 1 Quantity: EACH Cost Estimate: \$50.00 BSR: 1 Necessary

X Coordinate: N/A Y Coordinate: N/A Z Coordinate: N/A

Implementation: Priority 2 Phase Date Status Open

Notes:

Field Date: 8/17/2017 Report Date: 10/6/2017 Barrier #: 20F
 Facility: McKinleyville Library - 1606 Pickett Road, McKinleyville
 Location: Librarian Office/Volunteer Workroom
 Official Responsible: Karen Clower, ADA Coordinator
 Consent Decree: No Paragraph: M.51 Dwg: 1 of 1
 Barrier Area: Controls and Mechanisms Remediation: N/A
 Barrier Type: Electrical Switches - Side Reach High (Safe Harbor)



Barrier Description: Light switch control box top edge at max. 54" high measured to top of box

Code References: ADA Title II, Subpart D, § 35.150 Existing facilities § 35.150(b)(2)(i)

As Built Description: 49-7/8" - 50" high

Proposed Solution: No remediation required. Control box complied with prior code and is granted safe harbor

As-Built Meas: 0 Quantity: EACH Cost Estimate: \$0.00 BSR: 3 Hindrance

X Coordinate: N/A Y Coordinate: N/A Z Coordinate: N/A

Implementation: Priority 2 Phase Date Status Safe Harbor

Notes:

Field Date: 8/17/2017 Report Date: 10/6/2017 Barrier #: 20G

Facility: McKinleyville Library - 1606 Pickett Road, McKinleyville

Location: Librarian Office/Volunteer Workroom

Official Responsible: Karen Clower, ADA Coordinator

Consent Decree: No Paragraph: M.51 Dwg: 1 of 1

Barrier Area: Accessible Route - Interior Remediation: Required

Barrier Type: Clear Width - 36" Wide (Stored Items)



Barrier Description: Accessible route clear width is not min. 36" wide

Code References: CBC 11B-403.5.1 and 2010 ADAS 403.5.1

As Built Description: 28-3/4" clear width between fixed counter and copy machine

Proposed Solution: Remove or relocate stored items

As-Built Meas: 1 Quantity: JOB Cost Estimate: \$0.00 BSR: 1 Necessary

X Coordinate: N/A Y Coordinate: N/A Z Coordinate: N/A

Implementation: Priority 2 Phase Date Status Open

Notes:

Field Date: 8/17/2017 Report Date: 10/6/2017 Barrier #: 20H

Facility: McKinleyville Library - 1606 Pickett Road, McKinleyville

Location: Librarian Office/Volunteer Workroom

Official Responsible: Karen Clower, ADA Coordinator

Consent Decree: No Paragraph: M.51 Dwg: 1 of 1

Barrier Area: Controls and Mechanisms Remediation: Required

Barrier Type: Electrical Outlets - Side Reach Low Unobstructed



Barrier Description: Electrical outlet control box not min. 15" high measured to the bottom of the outlet box

Code References: CBC 11B-308.1.2, 11B-308.3.1 and 2010 ADAS 308.3

As Built Description: 13" high bottom edge

Proposed Solution: Relocate switch box to min. 15" high at the bottom of the outlet box

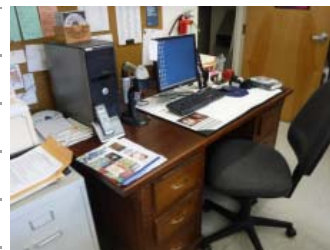
As-Built Meas: 1 Quantity: EACH Cost Estimate: \$750.00 BSR: 3 Hindrance

X Coordinate: N/A Y Coordinate: N/A Z Coordinate: N/A

Implementation: Priority 2 Phase Date Status Safe Harbor

Notes: Building constructed in 1997 and meets 1991 standards.

Field Date:	8/17/2017	Report Date:	10/6/2017	Barrier #:	20I
Facility:	McKinleyville Library - 1606 Pickett Road, McKinleyville				
Location:	Librarian Office/Volunteer Workroom				
Official Responsible:	Karen Clower, ADA Coordinator				
Consent Decree:	No	Paragraph:	M.51	Dwg:	1 of 1
Barrier Area:	Counters and Tables	Remediation:	Required		
Barrier Type:	Workstation - Knee Clearance				



Barrier Description: Knee clearance of at least 27" high, 30" wide and 19" deep not provided

Code References: CBC 11B-306.3 and 2010 ADAS 306.3

As Built Description: 20-1/2" wide knee clearance at desk used by volunteers

Proposed Solution: Replace min. 1 workstation to provide accessible knee clearance

As-Built Meas: 1 Quantity: EACH Cost Estimate: \$450.00 BSR: 1 Necessary

X Coordinate: N/A Y Coordinate: N/A Z Coordinate: N/A

Implementation: Priority 2 Phase Date Status Open

Notes:

Field Date:	8/17/2017	Report Date:	10/6/2017	Barrier #:	20J
Facility:	McKinleyville Library - 1606 Pickett Road, McKinleyville				
Location:	Librarian Office/Volunteer Workroom				
Official Responsible:	Karen Clower, ADA Coordinator				
Consent Decree:	No	Paragraph:	M.51	Dwg:	1 of 1
Barrier Area:	Counters and Tables	Remediation:	Required		
Barrier Type:	Workstation - Clear Floor Space (Stored Items)				



Barrier Description: Clear floor space 30" x 48" not provided at workstation

Code References: CBC 11B-305.3 and 2010 ADAS 305.3

As Built Description: Clear floor space not provide at workstation and accessible route reduces to 34-1/2" wide

Proposed Solution: Rearrange furniture to provide wheelchair access, as needed

As-Built Meas: 1 Quantity: EACH Cost Estimate: \$0.00 BSR: 3 Hindrance

X Coordinate: N/A Y Coordinate: N/A Z Coordinate: N/A

Implementation: Priority 2 Phase Date Status Open

Notes:

Field Date: 8/17/2017 Report Date: 10/6/2017 Barrier #: 20K

Facility: McKinleyville Library - 1606 Pickett Road, McKinleyville

Location: Librarian Office/Volunteer Workroom

Official Responsible: Karen Clower, ADA Coordinator

Consent Decree: No Paragraph: M.51 Dwg: 1 of 1

Barrier Area: Controls and Mechanisms Remediation: Required

Barrier Type: Clothing Hook or Rod - Height



Barrier Description: Clothing hooks not max. 48" high AFF

Code References: CBC 11B-308.2.1 and 2010 ADAS 308.2.1

As Built Description: 65" high

Proposed Solution: Provide additional hook in accessible location

As-Built Meas: 1 Quantity: EACH Cost Estimate: \$125.00 BSR: 2 Recommended

X Coordinate: N/A Y Coordinate: N/A Z Coordinate: N/A

Implementation: Priority 2 Phase Date Status Open

Notes:

Field Date: 8/17/2017 Report Date: 10/6/2017 Barrier #: 20L

Facility: McKinleyville Library - 1606 Pickett Road, McKinleyville

Location: Librarian Office/Volunteer Workroom

Official Responsible: Karen Clower, ADA Coordinator

Consent Decree: No Paragraph: M.51 Dwg: 1 of 1

Barrier Area: Clear Floor Space Remediation: Required

Barrier Type: Clear Floor Space - Wheelchair Use (Stored Items)



Barrier Description: Clear floor space of min. 30" by 48" not provided at element required to be accessible

Code References: CBC 11B-305 and 2010 ADAS 305

As Built Description: Clear floor space not provide at workstation

Proposed Solution: Rearrange furniture to provide wheelchair access, as needed

As-Built Meas: 1 Quantity: JOB Cost Estimate: \$0.00 BSR: 1 Necessary

X Coordinate: N/A Y Coordinate: N/A Z Coordinate: N/A

Implementation: Priority 2 Phase Date Status Open

Notes:

Field Date: 8/17/2017 Report Date: 10/6/2017 Barrier #: 20M

Facility: McKinleyville Library - 1606 Pickett Road, McKinleyville

Location: Librarian Office/Volunteer Workroom

Official Responsible: Owner

Consent Decree: No Paragraph: M.51 Dwg: 1 of 1

Barrier Area: Counters and Tables Remediation: Required

Barrier Type: Sink - Knee Clearance



Barrier Description: Sink bottom apron/edge not max 29" reducing to 27" at 8" back from edge

Code References: CBC 11B-212.3 & 11B-606.2 (2010 ADAS 212.3 & 606.2 less stringent)

As Built Description: No knee clearance at sink

Proposed Solution: Replace cabinet and remount sink if needed

As-Built Meas: 1 Quantity: EACH Cost Estimate: \$3,300.00 BSR: 1 Necessary

X Coordinate: N/A Y Coordinate: N/A Z Coordinate: N/A

Implementation: Priority 2 Phase Date Status Open

Notes:

Field Date: 8/17/2017 Report Date: 10/6/2017 Barrier #: 20N

Facility: McKinleyville Library - 1606 Pickett Road, McKinleyville

Location: Librarian Office/Volunteer Workroom

Official Responsible: Owner

Consent Decree: No Paragraph: M.51 Dwg: 1 of 1

Barrier Area: Controls and Mechanisms Remediation: Required

Barrier Type: Operable Part - Side Reach Obstructed (>10"-24")



Barrier Description: Operable part between 10" to 24" deep over an obstruction max. 34" high is located above 46"

Code References: CBC 11B-308.3.2 and 2010 ADAS 308.3.2

As Built Description: Paper towel and soap dispensers 46-3/4" - 49-3/4" high and 22-1/2" deep over an obstruction 32-3/4" high

Proposed Solution: Relocate operable part to max. 46" high

As-Built Meas: 2 Quantity: EACH Cost Estimate: \$1,500.00 BSR: 3 Hindrance

X Coordinate: N/A Y Coordinate: N/A Z Coordinate: N/A

Implementation: Priority 2 Phase Date Status Open

Notes:

Field Date: 8/17/2017 Report Date: 10/6/2017 Barrier #: 200

Facility: McKinleyville Library - 1606 Pickett Road, McKinleyville

Location: Librarian Office/Volunteer Workroom

Official Responsible: Owner

Consent Decree: No Paragraph: M.51 Dwg: 1 of 1

Barrier Area: Counters and Tables Remediation: Required

Barrier Type: Counter - Knee Clearance



Barrier Description: Knee clearance of at least 27" high, 30" wide and 19" deep not provided

Code References: CBC 11B-306.3 and 2010 ADAS 306.3

As Built Description: No knee clearance provided at counter

Proposed Solution: Provide min. 3 ft segment of accessible counter. Flip-up counters, adjacent tables and similar devices not permitted

As-Built Meas: 1 Quantity: EACH Cost Estimate: \$875.00 BSR: 3 Hindrance

X Coordinate: N/A Y Coordinate: N/A Z Coordinate: N/A

Implementation: Priority 2 Phase Date Status Open

Notes:

Field Date: 8/17/2017 Report Date: 10/6/2017 Barrier #: 20P

Facility: McKinleyville Library - 1606 Pickett Road, McKinleyville

Location: Librarian Office/Volunteer Workroom

Official Responsible: Owner

Consent Decree: No Paragraph: M.51 Dwg: 1 of 1

Barrier Area: Controls and Mechanisms Remediation: Required

Barrier Type: Shelves or Cabinets - Storage



Barrier Description: Shelf or cabinet not mounted max. 48" above floor or ground (max. 54" at pre-ADA elements)

Code References: CBC 11B-811.3 and 2010 ADAS 811.3

As Built Description: Shelf or cabinet not accessible

Proposed Solution: Provide additional shelf/cabinet at accessible height or provide assistance

As-Built Meas: 1 Quantity: JOB Cost Estimate: \$0.00 BSR: 3 Hindrance

X Coordinate: N/A Y Coordinate: N/A Z Coordinate: N/A

Implementation: Priority 2 Phase Date Status Open

Notes:

Field Date: 8/17/2017 Report Date: 10/6/2017 Barrier #: 20Q

Facility: McKinleyville Library - 1606 Pickett Road, McKinleyville

Location: Librarian Office/Volunteer Workroom

Official Responsible: Karen Clower, ADA Coordinator

Consent Decree: No Paragraph: M.51 Dwg: 1 of 1

Barrier Area: Accessible Route - Interior Remediation: Required

Barrier Type: Clear Width - 36" Wide (Stored Items)



Barrier Description: Accessible route clear width is not min. 36" wide

Code References: CBC 11B-403.5.1 and 2010 ADAS 403.5.1

As Built Description: Furniture or stored items block circulation route and prevent passage through space

Proposed Solution: Rearrange furniture to provide min. 36" wide passage space through room

As-Built Meas: 1 Quantity: JOB Cost Estimate: \$0.00 BSR: 1 Necessary

X Coordinate: N/A Y Coordinate: N/A Z Coordinate: N/A

Implementation: Priority 2 Phase Date Status Open

Notes:

Field Date: 8/17/2017 Report Date: 10/6/2017 Barrier #: 20R

Facility: McKinleyville Library - 1606 Pickett Road, McKinleyville

Location: Librarian Office/Volunteer Workroom

Official Responsible: Karen Clower, ADA Coordinator

Consent Decree: No Paragraph: M.51 Dwg: 1 of 1

Barrier Area: Signage Remediation: Required

Barrier Type: Room ID Sign - No Tactile Information



Barrier Description: Room ID sign provided for sighted people lacks tactile info for the visually impaired

Code References: CBC 11B-216.2 and 2010 ADAS 216.2

As Built Description: No tactile information provided where visual sign exists

Proposed Solution: Provide room ID sign with tactile information at wall at latch side of door

As-Built Meas: 1 Quantity: EACH Cost Estimate: \$250.00 BSR: 1 Necessary

X Coordinate: N/A Y Coordinate: N/A Z Coordinate: N/A

Implementation: Priority 4 Phase Date Status Open

Notes:

Field Date: 8/17/2017 Report Date: 10/6/2017 Barrier #: 20S
Facility: McKinleyville Library - 1606 Pickett Road, McKinleyville
Location: Librarian Office/Volunteer Workroom
Official Responsible: Karen Clower, ADA Coordinator
Consent Decree: No Paragraph: M.51 Dwg: 1 of 1
Barrier Area: Signage Remediation: Required
Barrier Type: Tactile Exit Sign - Exit



Barrier Description: Ground floor doors that exit to exterior not provided with signs stating "EXIT"

Code References: CBC 11B-216.4.1 & 11B-703 and 2010 ADAS 216.4.1

As Built Description: No tactile sign provided where required

Proposed Solution: Provide compliant sign at exit side of door

As-Built Meas: 1 Quantity: EACH Cost Estimate: \$250.00 BSR: 1 Necessary

X Coordinate: N/A Y Coordinate: N/A Z Coordinate: N/A

Implementation: Priority 4 Phase Date Status Open

Notes:

Field Date: 8/17/2017 Report Date: 10/6/2017 Barrier #: 20T
Facility: McKinleyville Library - 1606 Pickett Road, McKinleyville
Location: Librarian Office/Volunteer Workroom
Official Responsible: Karen Clower, ADA Coordinator
Consent Decree: No Paragraph: M.51 Dwg: 1 of 1
Barrier Area: Doors or Gates Remediation: N/A
Barrier Type: Doormats



Barrier Description: Doormat not anchored to floor (trip hazard)

Code References: CBC 11B-302.2 and 2010 ADAS 302.2

As Built Description: Existing door mat not recessed or secured

Proposed Solution: Secure mat to floor. When mat provides equivalent facilitation on a non-slip resistant floor, the mat may stay in place when maintained.

As-Built Meas: 0 Quantity: EACH Cost Estimate: \$0.00 BSR: 1 Necessary

X Coordinate: N/A Y Coordinate: N/A Z Coordinate: N/A

Implementation: Priority 2 Phase Date Status Closed

Notes:

Field Date: 8/17/2017 Report Date: 10/6/2017 Barrier #: 21A
 Facility: McKinleyville Library - 1606 Pickett Road, McKinleyville
 Location: Book Drop Room
 Official Responsible: Karen Clower, ADA Coordinator
 Consent Decree: No Paragraph: M.51 Dwg: 1 of 1
 Barrier Area: Signage Remediation: Required
 Barrier Type: Room ID Sign - No Tactile Information



Barrier Description: Room ID sign provided for sighted people lacks tactile info for the visually impaired

Code References: CBC 11B-216.2 and 2010 ADAS 216.2

As Built Description: No tactile information provided where visual sign exists

Proposed Solution: Provide room ID sign with tactile information at wall at latch side of door

As-Built Meas: 1 Quantity: EACH Cost Estimate: \$250.00 BSR: 1 Necessary

X Coordinate: N/A Y Coordinate: N/A Z Coordinate: N/A

Implementation: Priority 4 Phase Date Status Open

Notes:

Field Date: 8/17/2017 Report Date: 10/6/2017 Barrier #: 21B
 Facility: McKinleyville Library - 1606 Pickett Road, McKinleyville
 Location: Book Drop Room
 Official Responsible: Karen Clower, ADA Coordinator
 Consent Decree: No Paragraph: M.51 Dwg: 1 of 1
 Barrier Area: Doors or Gates Remediation: Required
 Barrier Type: Maneuvering Cl - Stored Items



Barrier Description: Door/Gate lacks required maneuvering clearance

Code References: CBC Figure 11B-404.2.4.1 and 2010 ADAS 404.2.4.1

As Built Description: 4" strike edge clearance at pull side of door

Proposed Solution: Leave door open at all times to facilitate access. If door is fire rated, install automatic door opening device.

As-Built Meas: 1 Quantity: EACH Cost Estimate: \$125.00 BSR: 1 Necessary

X Coordinate: N/A Y Coordinate: N/A Z Coordinate: N/A

Implementation: Priority 2 Phase Date Status Open

Notes: 5" strike edge clearance at push side of door with no door closer.

Field Date: 8/17/2017 Report Date: 10/6/2017 Barrier #: 21C

Facility: McKinleyville Library - 1606 Pickett Road, McKinleyville

Location: Book Drop Room

Official Responsible: Karen Clower, ADA Coordinator

Consent Decree: No Paragraph: M.51 Dwg: 1 of 1

Barrier Area: Accessible Route - Interior Remediation: Required

Barrier Type: Turning Space - 360 Degree Turn (<60" - Stored Items)

Barrier Description: Circular turning space not minimum of 60" in diameter (including toe/knee space)

Code References: CBC 11B-304.3.1 and 2010 ADAS 304.3.1

As Built Description: 45" x 40" turning space within room

Proposed Solution: Remove stored items

As-Built Meas: 1 Quantity: JOB Cost Estimate: \$0.00 BSR: 2 Recommended

X Coordinate: N/A Y Coordinate: N/A Z Coordinate: N/A

Implementation: Priority 2 Phase Date Status Open

Notes:



Field Date: 8/17/2017 Report Date: 10/6/2017 Barrier #: 21D

Facility: McKinleyville Library - 1606 Pickett Road, McKinleyville

Location: Book Drop Room

Official Responsible: Owner

Consent Decree: No Paragraph: M.51 Dwg: 1 of 1

Barrier Area: Accessible Route - Interior Remediation: Required

Barrier Type: Cross Slope - Existing (2.1% to 3.0%)

Barrier Description: Cross slope exceeds 2.0% (2.1% to 3.0%)

Code References: CBC 11B-403.3 and 2010 ADAS 403.3

As Built Description: 2.4% cross slope

Proposed Solution: Demolish existing and construct new accessible route

As-Built Meas: 20 Quantity: SF Cost Estimate: \$5,000.00 BSR: 4 Low Severity

X Coordinate: N/A Y Coordinate: N/A Z Coordinate: N/A

Implementation: Priority 2 Phase Date Status Open

Notes:



Field Date: 8/17/2017 Report Date: 10/6/2017 Barrier #: 21E
Facility: McKinleyville Library - 1606 Pickett Road, McKinleyville
Location: Book Drop Room
Official Responsible: Owner
Consent Decree: No Paragraph: M.51 Dwg: 1 of 1
Barrier Area: Accessible Route - Interior Remediation: Required
Barrier Type: Clear Width - 36" Wide



Barrier Description: Accessible route clear width is not min. 36" wide

Code References: CBC 11B-403.5.1 and 2010 ADAS 403.5.1

As Built Description: 22" clear width to book return pickup

Proposed Solution: Remodel to provide an accessible route to the book drop retrieval location

As-Built Meas: 1 Quantity: LF Cost Estimate: \$250.00 BSR: 1 Necessary

X Coordinate: N/A Y Coordinate: N/A Z Coordinate: N/A

Implementation: Priority 2 Phase Date Status Open

Notes:

Field Date: 8/17/2017 Report Date: 10/6/2017 Barrier #: 22A
Facility: McKinleyville Library - 1606 Pickett Road, McKinleyville
Location: Exterior - Walkway to Volunteer Room
Official Responsible: Owner
Consent Decree: No Paragraph: M.51 Dwg: N/A
Barrier Area: Doors or Gates Remediation: Required
Barrier Type: Door/Gate Landing - Slope > 5.0%



Barrier Description: Door/Gate landing is not level on both sides of door (> 5.0%)

Code References: CBC 11B-404.2.4.4 and 2010 ADAS 404.2.4.4

As Built Description: 6.5% door landing slope

Proposed Solution: Demolish and reconstruct level landing

As-Built Meas: 16 Quantity: SF Cost Estimate: \$2,000.00 BSR: 1 Necessary

X Coordinate: -124.099867008626 Y Coordinate: 40.9440669603645 Z Coordinate: 45.368385

Implementation: Priority 2 Phase Date Status Open

Notes:

Field Date: 8/17/2017 Report Date: 10/6/2017 Barrier #: 22B
 Facility: McKinleyville Library - 1606 Pickett Road, McKinleyville
 Location: Exterior - Walkway to Volunteer Room
 Official Responsible: Owner
 Consent Decree: No Paragraph: M.51 Dwg: N/A
 Barrier Area: Accessible Route - Exterior Remediation: Required
 Barrier Type: Turning Space - 360 Degree Turn (Level)



Barrier Description: Circular turning space identified with a change in level of more than 1:48 (2.0%)

Code References: CBC 11B-304.2 and 2010 ADAS 304.2

As Built Description: 3.9% slope in landing at change of direction

Proposed Solution: Alter floor or ground surface to comply

As-Built Meas: 20 Quantity: SF Cost Estimate: \$2,500.00 BSR: 2 Recommended

X Coordinate: -124.099867008626 Y Coordinate: 40.9440669603645 Z Coordinate: 45.368385

Implementation: Priority 1 Phase Date Status Open

Notes:

Field Date: 8/17/2017 Report Date: 10/6/2017 Barrier #: 23
 Facility: McKinleyville Library - 1606 Pickett Road, McKinleyville
 Location: Exterior - Walkway to Volunteer Room
 Official Responsible: Owner
 Consent Decree: No Paragraph: M.51 Dwg: N/A
 Barrier Area: Accessible Route - Exterior Remediation: Required
 Barrier Type: Turning Space - 360 Degree Turn (Level)



Barrier Description: Circular turning space identified with a change in level of more than 1:48 (2.0%)

Code References: CBC 11B-304.2 and 2010 ADAS 304.2

As Built Description: 6.0% slope in landing at change of direction

Proposed Solution: Alter floor or ground surface to comply

As-Built Meas: 20 Quantity: SF Cost Estimate: \$2,500.00 BSR: 2 Recommended

X Coordinate: -124.099838007241 Y Coordinate: 40.9441159944981 Z Coordinate: 46.332287

Implementation: Priority 1 Phase Date Status Open

Notes:

Field Date: 8/17/2017 Report Date: 10/6/2017 Barrier #: 24

Facility: McKinleyville Library - 1606 Pickett Road, McKinleyville

Location: Exterior - Walkway to Volunteer Room

Official Responsible: Owner

Consent Decree: No Paragraph: M.51 Dwg: N/A

Barrier Area: Accessible Route - Exterior Remediation: Required

Barrier Type: Cross Slope - Existing (2.1% to 3.0%)



Barrier Description: Cross slope exceeds 2.0% (2.1% to 3.0%)

Code References: CBC 11B-403.3 and 2010 ADAS 403.3

As Built Description: 2.8% cross slope

Proposed Solution: Demolish existing and construct new accessible route

As-Built Meas: 18 Quantity: LF Cost Estimate: \$2,250.00 BSR: 4 Low Severity

X Coordinate: -124.099862985312 Y Coordinate: 40.9440559800714 Z Coordinate: 46.7368239999999

Implementation: Priority 1 Phase Date Status Open

Notes:

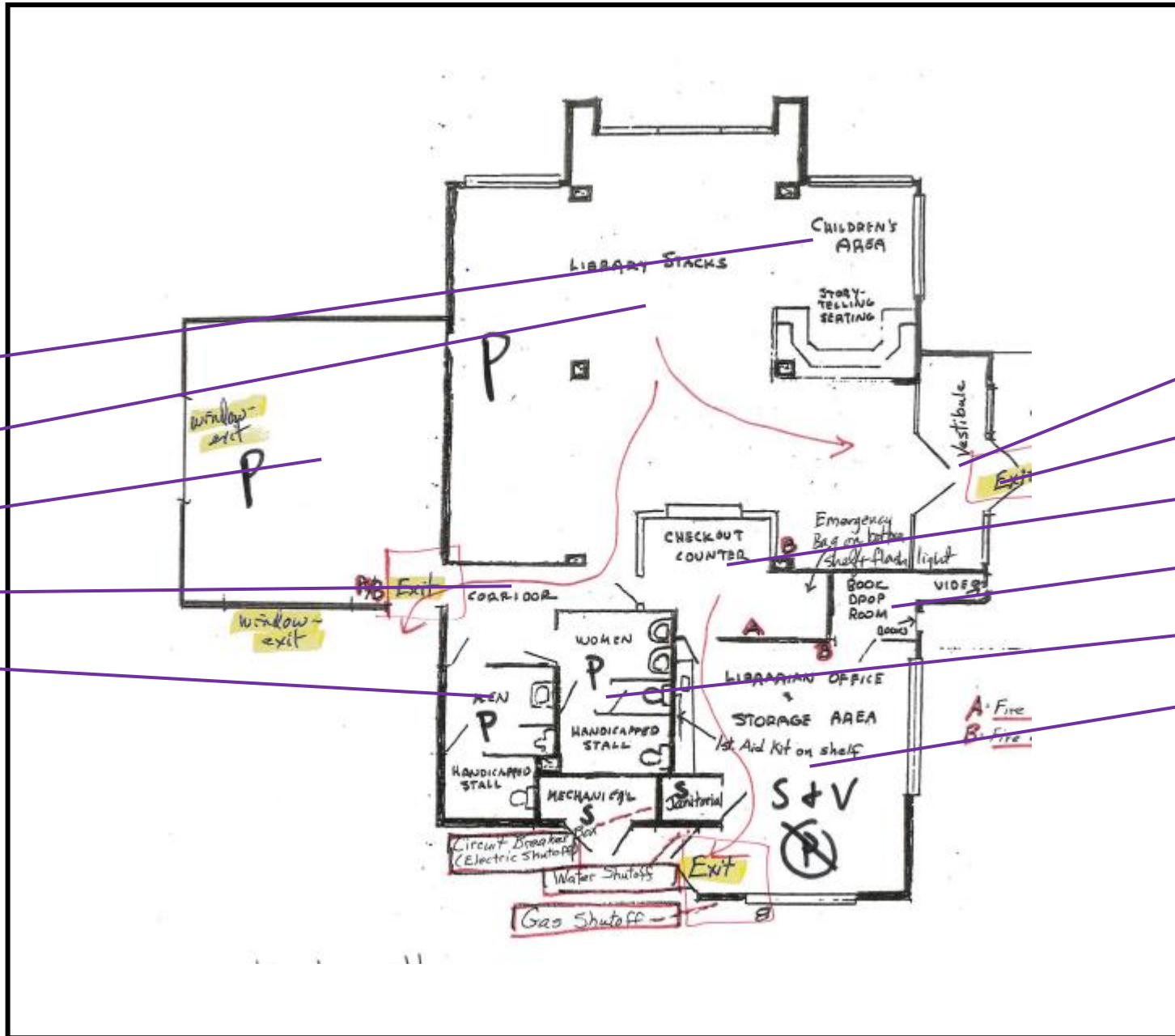
15

14

19

16

17



12

11

13

21

18

20