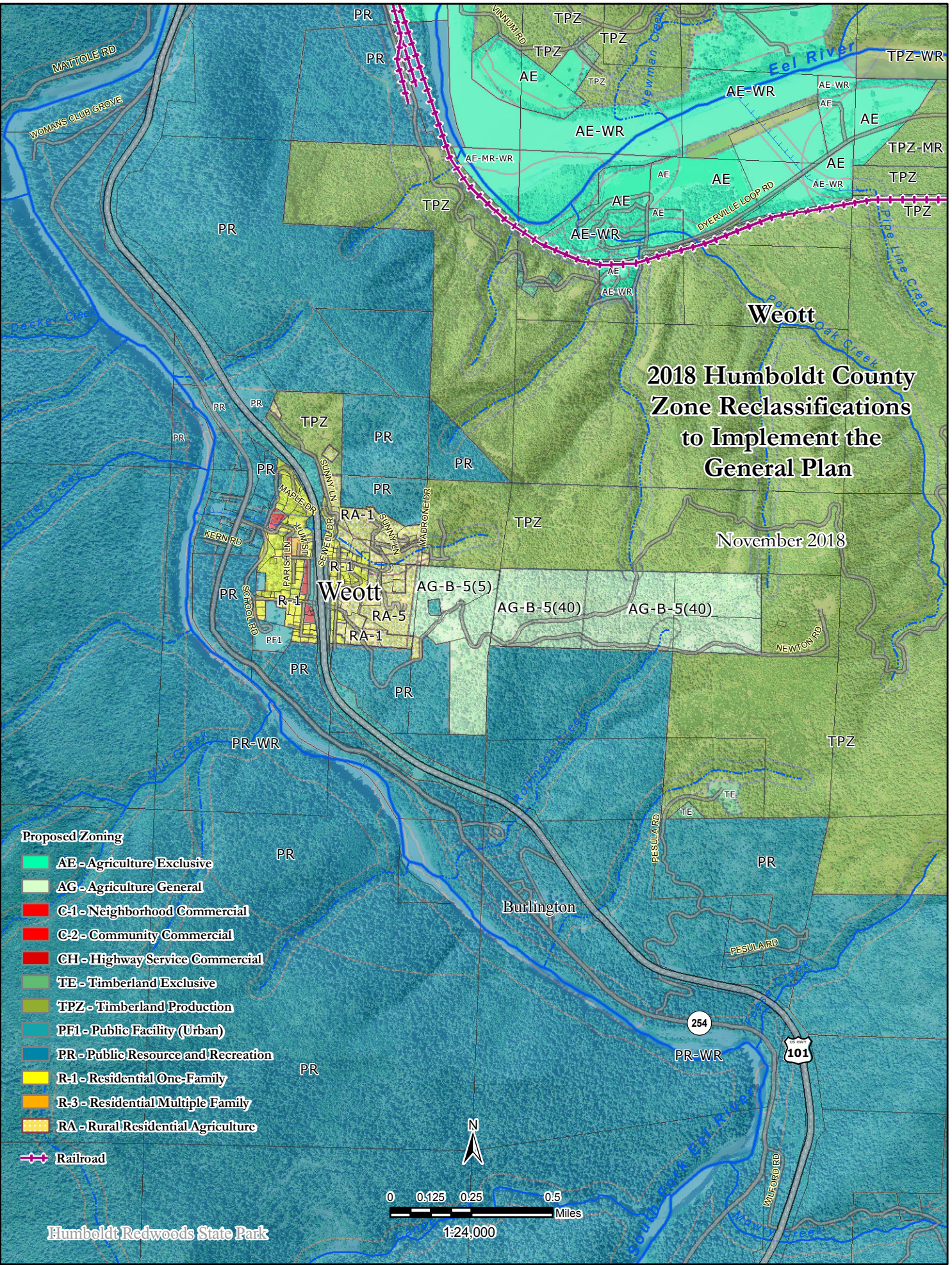
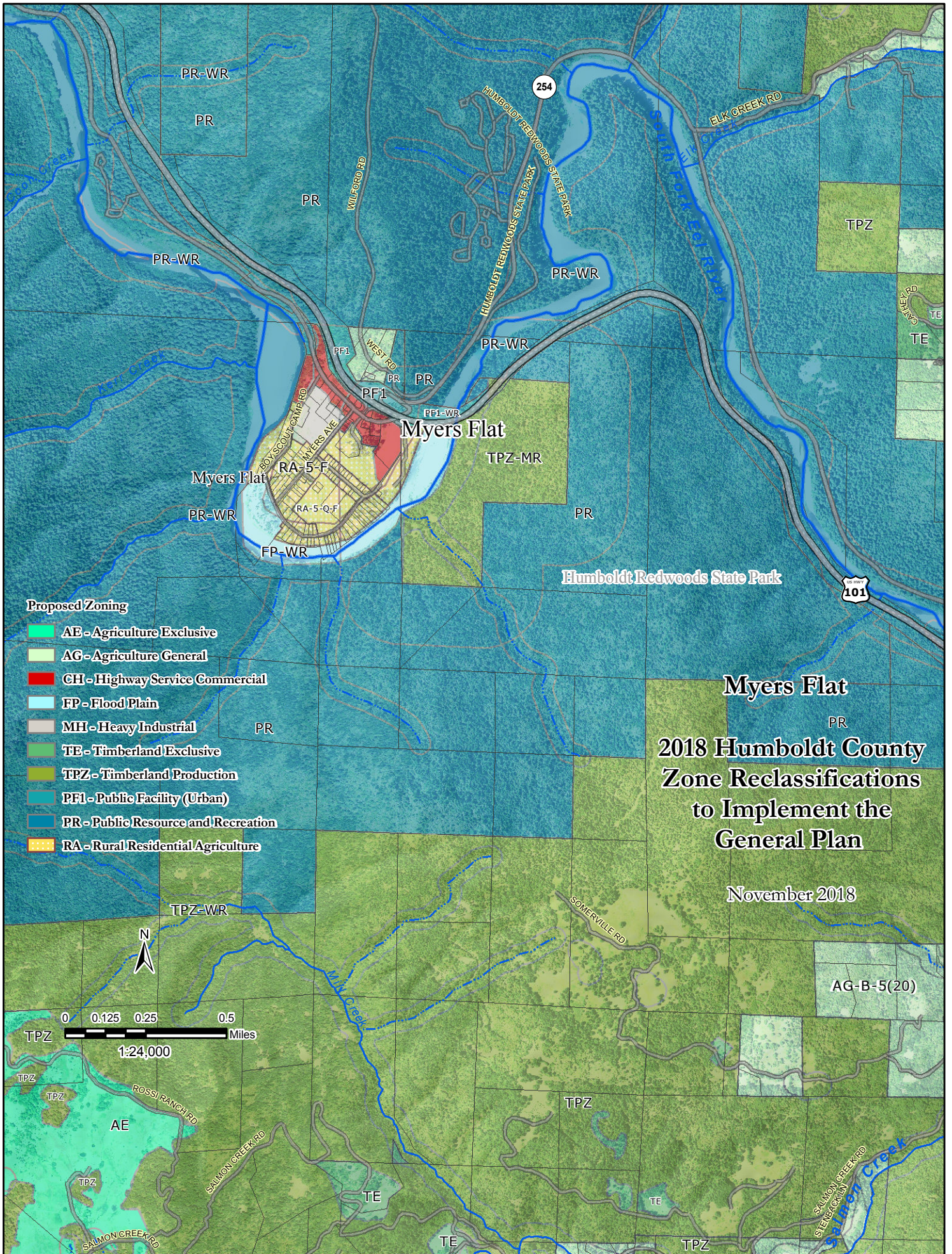


# 2018 Humboldt County Zone Reclassifications to Implement the General Plan

November 2018





**Proposed Zoning**

- AE - Agriculture Exclusive
- AG - Agriculture General
- CH - Highway Service Commercial
- FP - Flood Plain
- MH - Heavy Industrial
- TE - Timberland Exclusive
- TPZ - Timberland Production
- PF1 - Public Facility (Urban)
- PR - Public Resource and Recreation
- RA - Rural Residential Agriculture

**Myers Flat**  
 PR  
**2018 Humboldt County**  
**Zone Reclassifications**  
**to Implement the**  
**General Plan**

November 2018



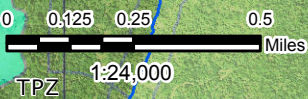
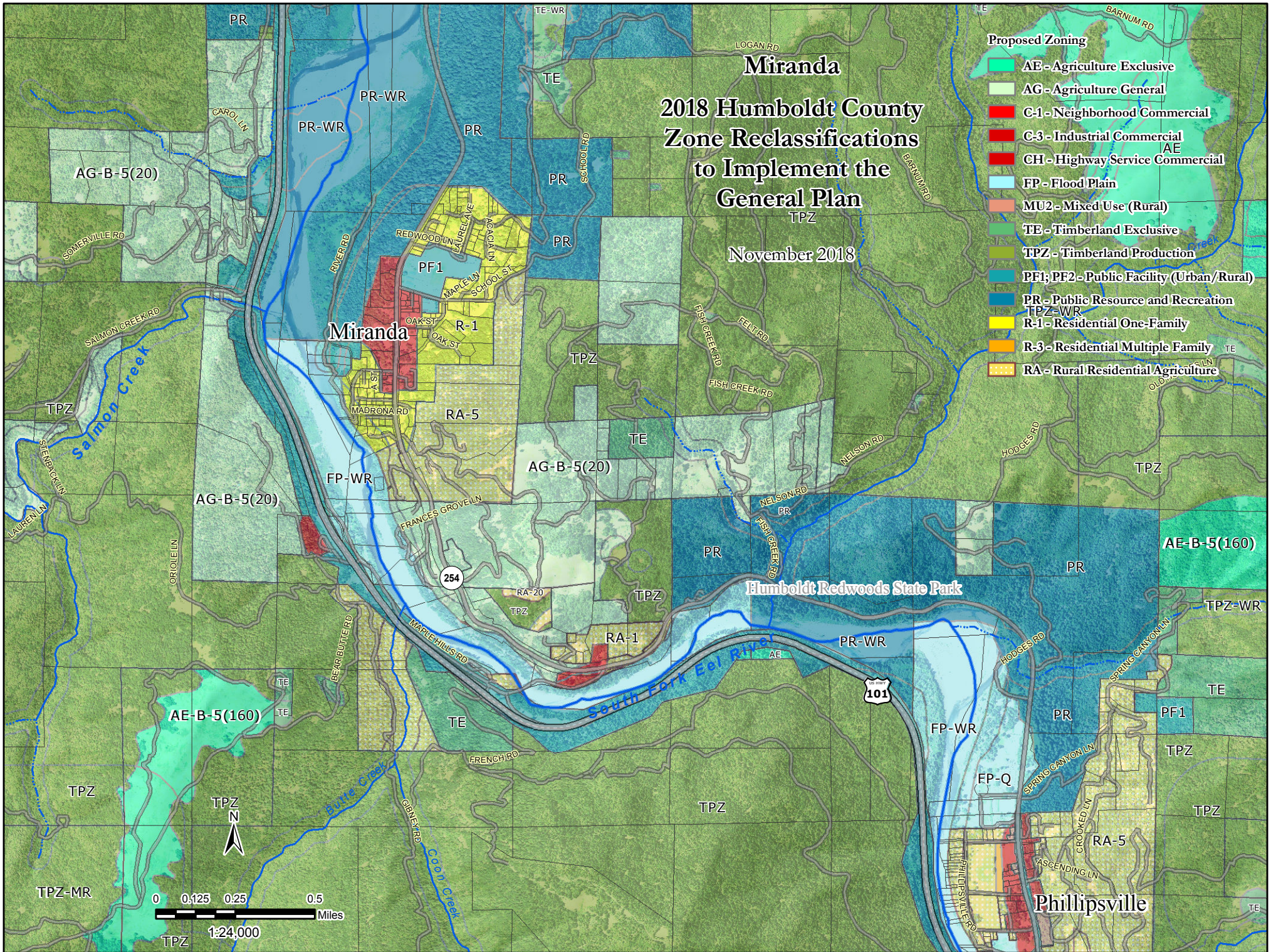
AG-B-5(20)

# Miranda

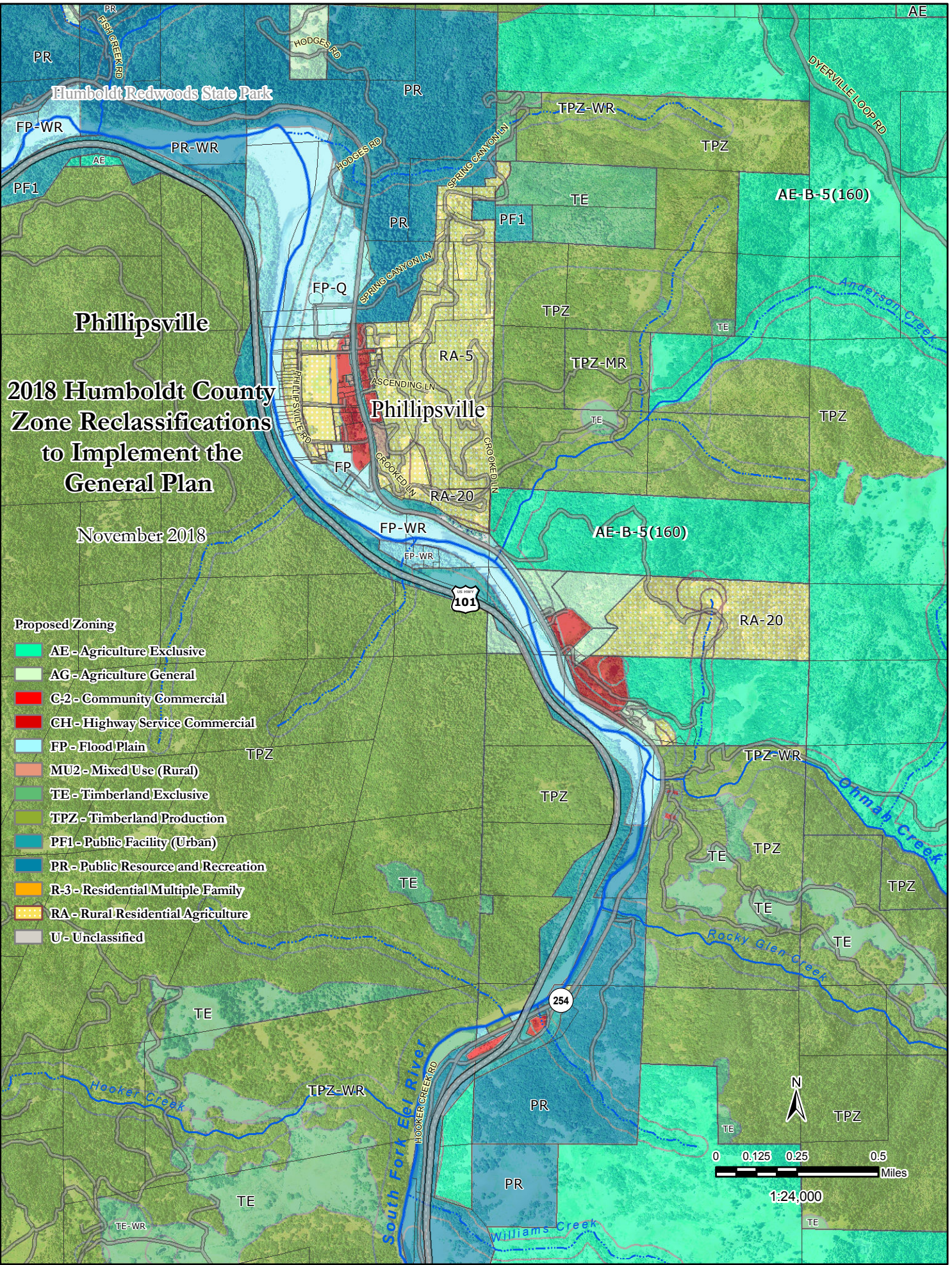
## 2018 Humboldt County Zone Reclassifications to Implement the General Plan

November 2018

- Proposed Zoning**
- AE - Agriculture Exclusive
  - AG - Agriculture General
  - C-1 - Neighborhood Commercial
  - C-3 - Industrial Commercial
  - CH - Highway Service Commercial
  - FP - Flood Plain
  - MU2 - Mixed Use (Rural)
  - TE - Timberland Exclusive
  - TPZ - Timberland Production
  - PF1; PF2 - Public Facility (Urban/Rural)
  - PR - Public Resource and Recreation
  - TPZ-WR
  - R-1 - Residential One-Family
  - R-3 - Residential Multiple Family
  - RA - Rural Residential Agriculture



Phillippsville

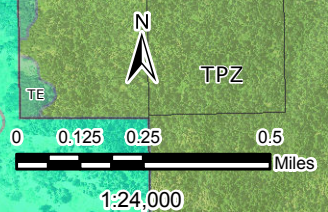


# 2018 Humboldt County Zone Reclassifications to Implement the General Plan

November 2018

### Proposed Zoning

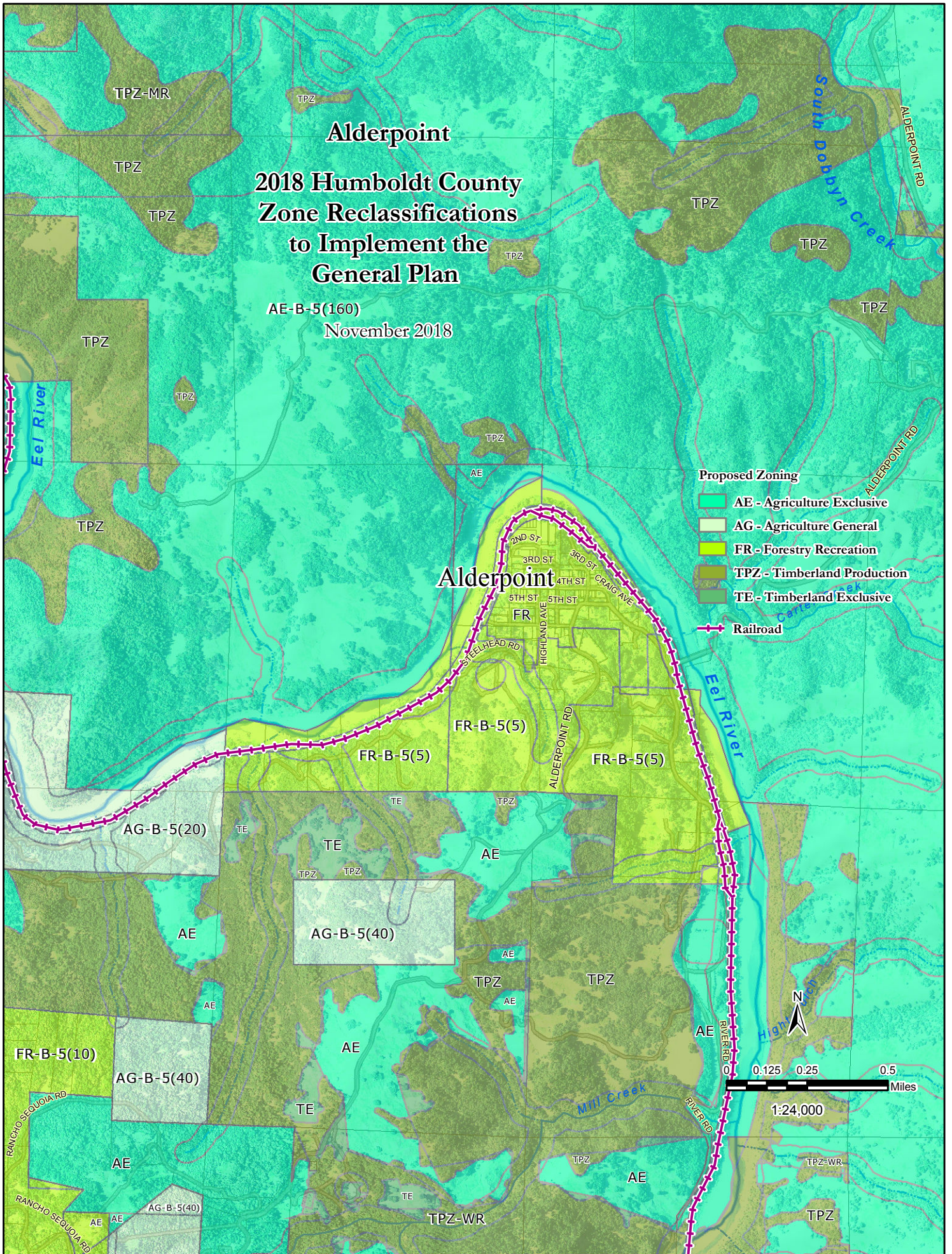
- AE - Agriculture Exclusive
- AG - Agriculture General
- C-2 - Community Commercial
- CH - Highway Service Commercial
- FP - Flood Plain
- MU2 - Mixed Use (Rural)
- TE - Timberland Exclusive
- TPZ - Timberland Production
- PF1 - Public Facility (Urban)
- PR - Public Resource and Recreation
- R-3 - Residential Multiple Family
- RA - Rural Residential Agriculture
- U - Unclassified



# Alderpoint

## 2018 Humboldt County Zone Reclassifications to Implement the General Plan

AE-B-5(160)  
November 2018



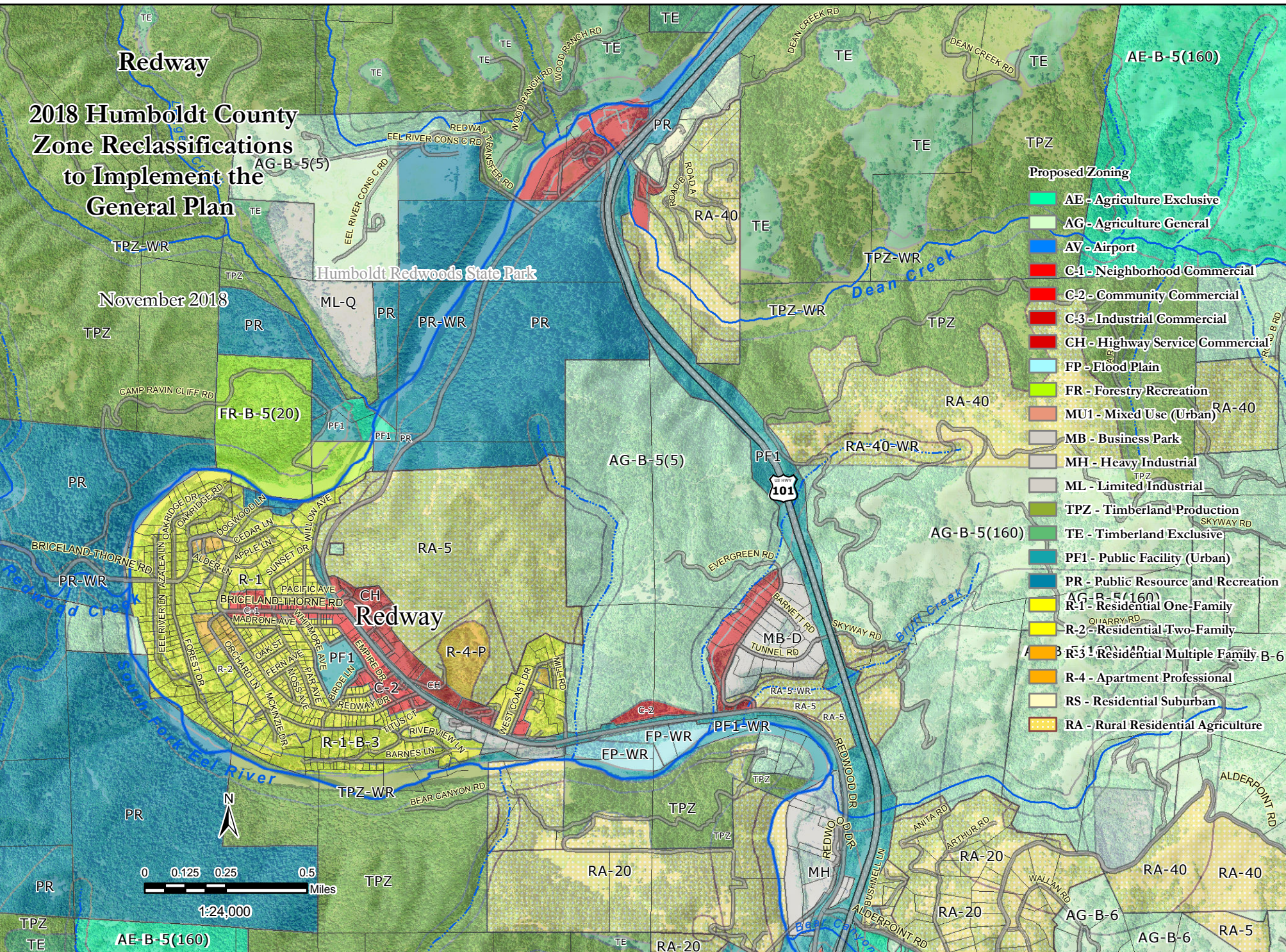
**Proposed Zoning**

- AE - Agriculture Exclusive
- AG - Agriculture General
- FR - Forestry Recreation
- TPZ - Timberland Production
- TE - Timberland Exclusive
- Railroad



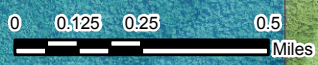
# 2018 Humboldt County Zone Reclassifications to Implement the General Plan

November 2018



### Proposed Zoning

- AE - Agriculture Exclusive
- AG - Agriculture General
- AV - Airport
- C-1 - Neighborhood Commercial
- C-2 - Community Commercial
- C-3 - Industrial Commercial
- CH - Highway Service Commercial
- FP - Flood Plain
- FR - Forestry Recreation
- MU1 - Mixed Use (Urban)
- MB - Business Park
- MH - Heavy Industrial
- ML - Limited Industrial
- TPZ - Timberland Production
- TE - Timberland Exclusive
- PR - Public Resource and Recreation
- AG-B-5(160)
- R-1 - Residential One-Family
- R-2 - Residential Two-Family
- R-3 - Residential Multiple Family, B-6
- R-4 - Apartment Professional
- RS - Residential Suburban
- RA - Rural Residential Agriculture

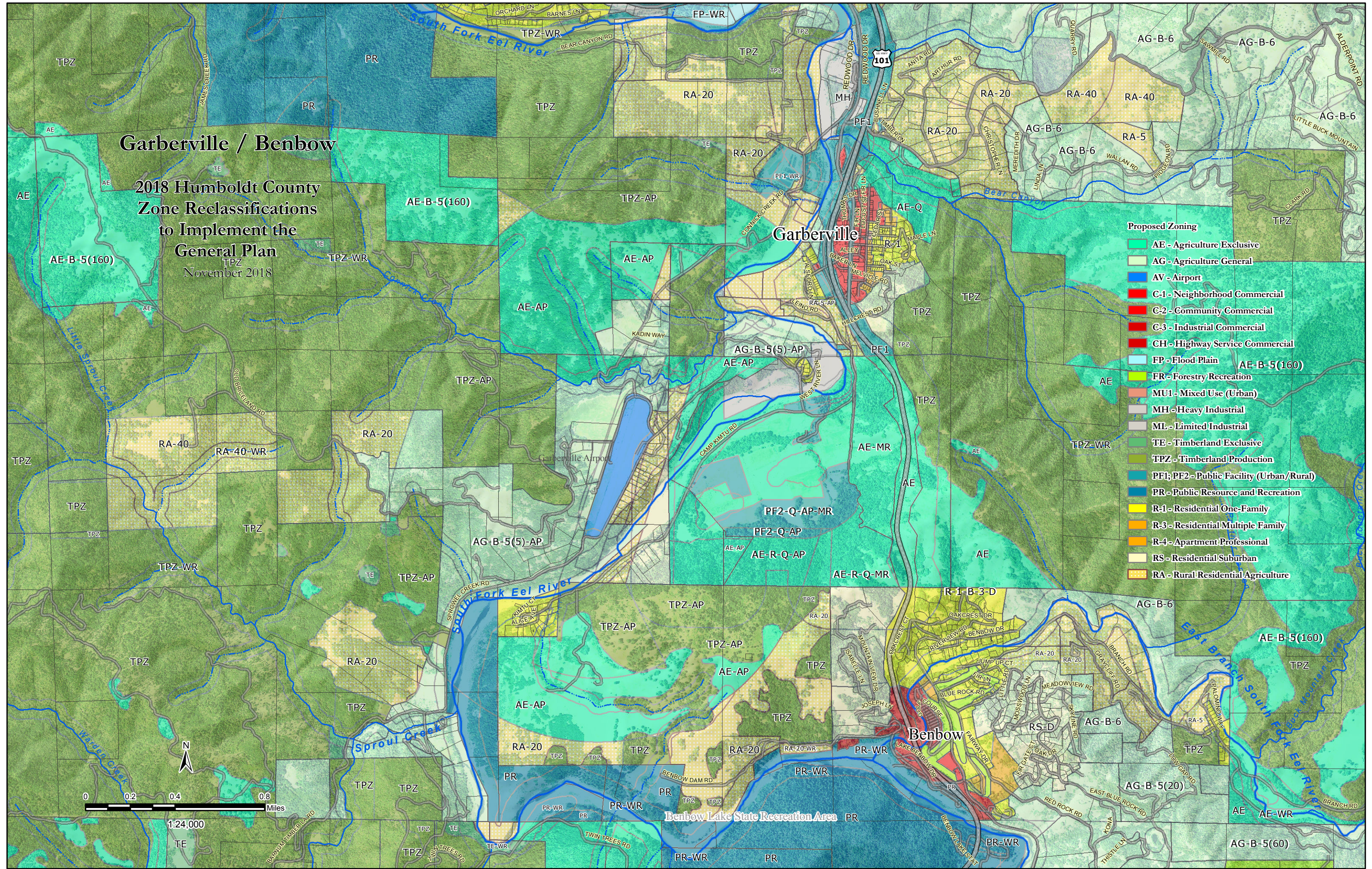


1:24,000



# Garberville / Benbow

2018 Humboldt County  
Zone Reclassifications  
to Implement the  
General Plan  
November 2018



- Proposed Zoning**
- AE - Agriculture Exclusive
  - AG - Agriculture General
  - AV - Airport
  - C-1 - Neighborhood Commercial
  - C-2 - Community Commercial
  - C-3 - Industrial Commercial
  - CH - Highway Service Commercial
  - FP - Flood Plain
  - FR - Forestry Recreation
  - MU1 - Mixed Use (Urban)
  - MH - Heavy Industrial
  - ML - Limited Industrial
  - TE - Timberland Exclusive
  - TPZ - Timberland Production
  - PF1; PF2 - Public Facility (Urban/Rural)
  - PR - Public Resource and Recreation
  - R-1 - Residential One-Family
  - R-3 - Residential Multiple Family
  - R-4 - Apartment Professional
  - RS - Residential Suburban
  - RA - Rural Residential Agriculture

0 0.2 0.4 0.8 Miles  
1:24,000

# Shelter Cove

## 2018 Humboldt County Zone Reclassifications to Implement the General Plan

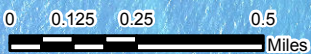
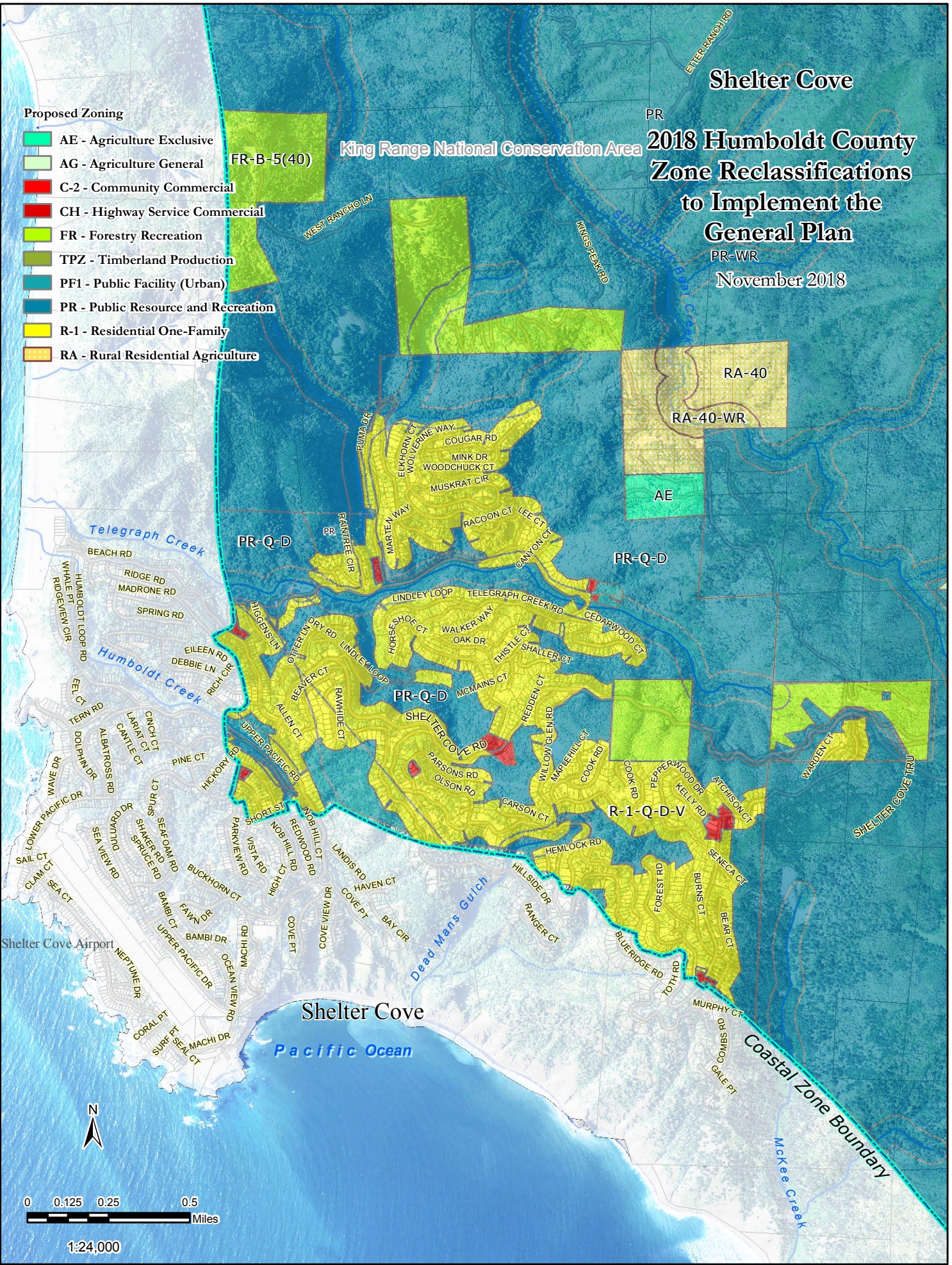
PR-WR  
November 2018

### Proposed Zoning

- AE - Agriculture Exclusive
- AG - Agriculture General
- C-2 - Community Commercial
- CH - Highway Service Commercial
- FR - Forestry Recreation
- TPZ - Timberland Production
- PF1 - Public Facility (Urban)
- PR - Public Resource and Recreation
- R-1 - Residential One-Family
- RA - Rural Residential Agriculture

FR-B-5(40)

King Range National Conservation Area



1:24,000