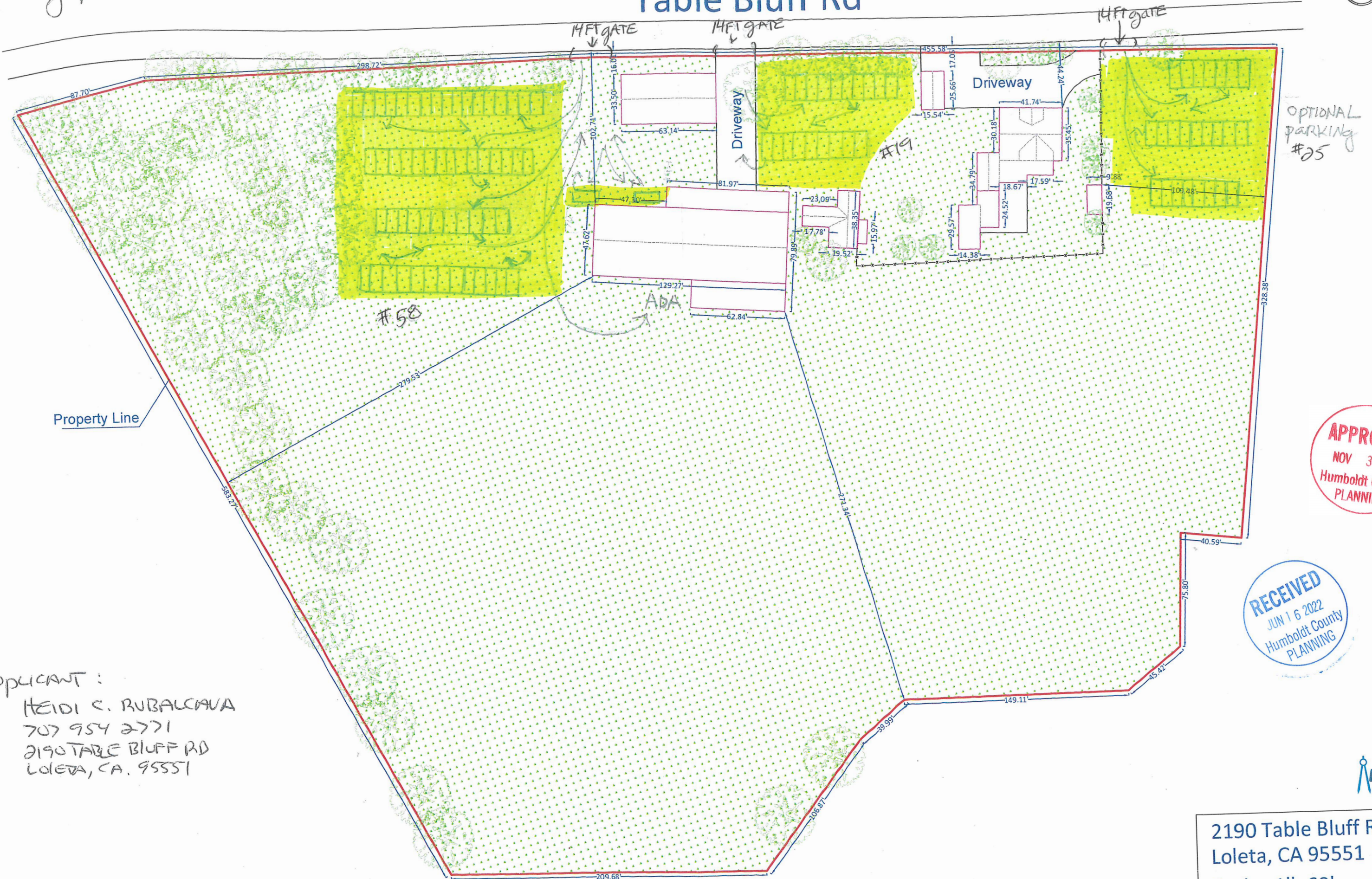
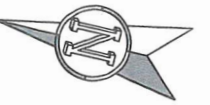


PARKING PLAN ADV # 308-131-033-000

2190 Table Bluff Rd



Property Line

Applicant:
 HEIDI C. RUBALCAVA
 707 954 2771
 2190 TABLE BLUFF RD
 LOLETA, CA. 95551

APPROVED
 NOV 3 2022
 Humboldt County
 PLANNING

RECEIVED
 JUN 16 2022
 Humboldt County
 PLANNING



2190 Table Bluff Rd
 Loleta, CA 95551
 Scale: 1"=60'