

## Patient 2 Patient Inc Water Management Plan

By: SL Consulting Services Inc

June 20, 2022

### Irrigation Water Source and Projected Irrigation Water Use

The existing water source for the operation were three existing in-stream/headwater ponds. A CDFW LSAA was issued that authorized the use of the ponds for irrigation water.

As guidance and policy trends in 2016 directed applicants towards non-jurisdictional water sources, the applicant developed a permitted well in May of 2016 which has been the interim water source since.

Moving forward, water will transition back to use of the existing ponds. One pond has a maximum capacity of approximately 814,000 gallons with a catchment area of approximately 20,000 square feet and the second pond has a capacity of approximately 1,466,000 gallons with a catchment area of approximately 29,500 square feet. An existing residence with approximately 3,750 square feet of roof area will be guttered and connected to the 814,000 gallon pond. The third pond has a capacity of of 215,000 gallons and a rain catchment area of approximately 8,500 square feet.

A permitted well is a back up water source that will be utilized to fill the ponds during February and March if the ponds do not receive sufficient rainfall to meet project demands with a 20% evaporative loss buffer.

The table below outlines the estimated irrigation water usage for cultivation during a typical year. Variables such as weather conditions and specific cannabis strains will have a slight effect on water use. The operation utilizes drip/emitter irrigation and timers to maximize water efficiency.

<b>ESTIMATED ANNUAL IRRIGATION WATER USAGE (28,800 SF ML GREENHOUSE "AREA A")</b>											
JAN	FEB	MAR	APR	MAY	JUN	JUL	AUG	SEP	OCT	NOV	DEC
27140	44440	26700	25100	28100	34600	51600	40700	31300	34600	25500	15000

<b>ESTIMATED ANNUAL IRRIGATION WATER USAGE (58,000 SF ML PROPOSED)</b>											
JAN	FEB	MAR	APR	MAY	JUN	JUL	AUG	SEP	OCT	NOV	DEC
1500	3000	8000	31500	47500	95000	111000	111000	111000	60000	20000	1500

Estimated water use for the 28,800 SF canopy (full season operations) is 384,780 gallons (13.36 gallons per square foot per season based on 2021 season water meter records)

Estimated water use for the 58,000 SF canopy (two to three harvests per year April-November growing cycle) is 601,000 gallons (approximately 10.362 gallons per square foot per season).

The total water usage for the project is estimated to be 985,780 gallons.

The feasibility of utilizing rain catchment for all irrigation needs was evaluated below based on recent drought year and historical average rainfall data:

Drought Year Estimated Water Capture (2020 Drought Water Year)

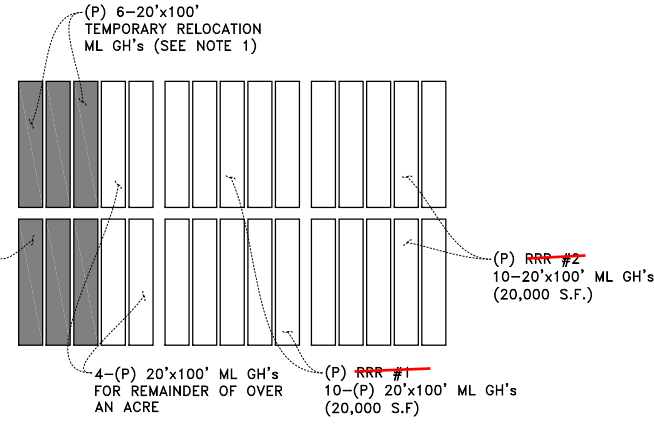
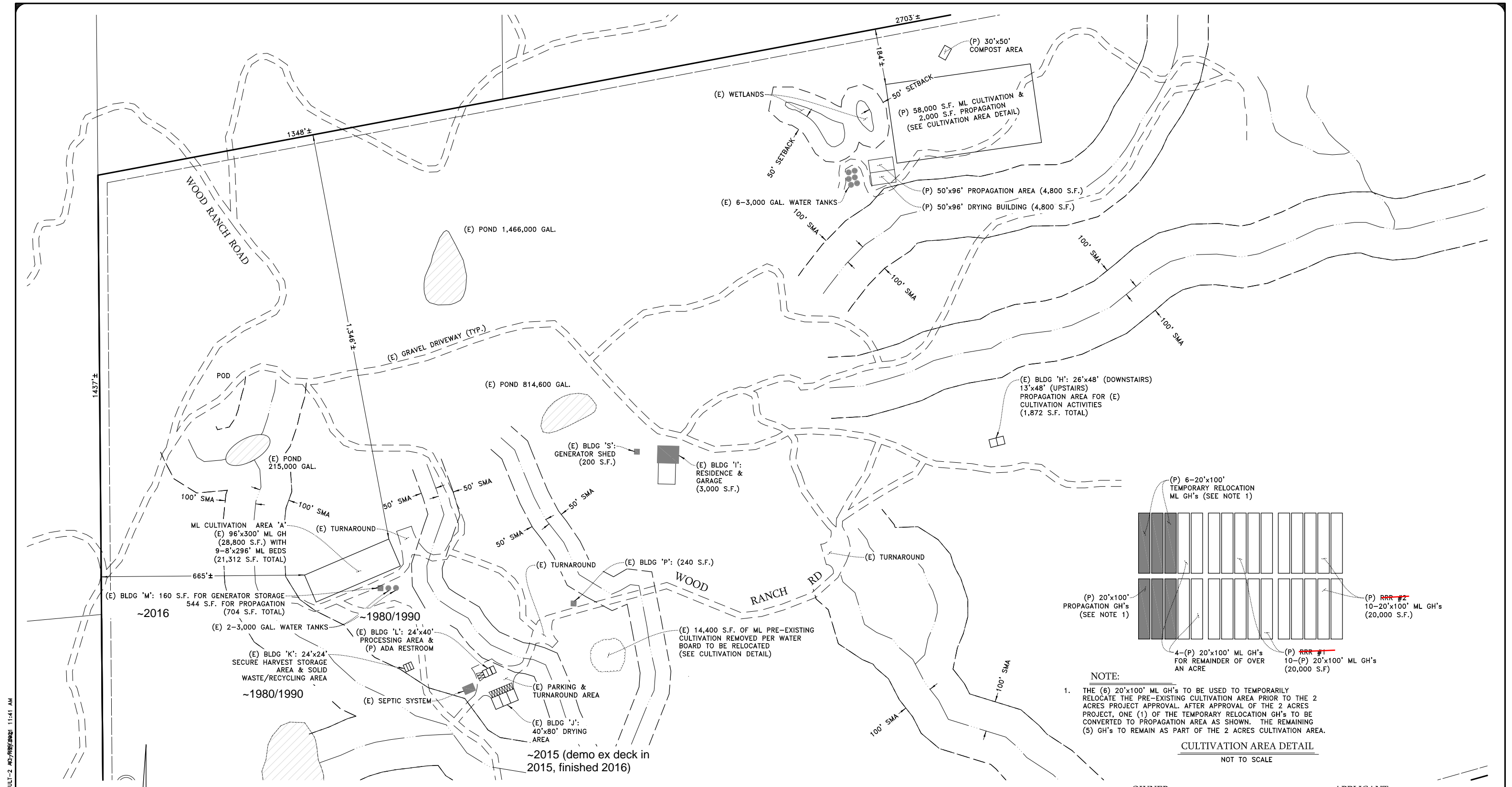
29.98" X 1 foot / 12 inches X (20,000+29,500+3,750+8,500 SF) X 7.48 gallons / cubic foot = 1,153,955 gallons of rain catchment

Average Year Estimated Water Capture (56.9 inches)

56.9" X 1 foot / 12 inches X (20,000+29,500+3,750+8,500 SF) X 7.48 gallons / cubic foot = 2,190,000 gallons of rain catchment

There is sufficient capacity in both ponds to handle the storage requirements as both all ponds in combination have a total of 2.495 million gallons of storage.

Thus, even in the most recent severe drought year, sufficient water was captured in the ponds for irrigation needs although a safety factor to account for drought and fire safety would still be recommended. The well is used as a back up to top off ponds if they do not fully fill due to drought conditions.



**NOTE:**

- THE (6) 20'x100' ML GH's TO BE USED TO TEMPORARILY RELOCATE THE PRE-EXISTING CULTIVATION AREA PRIOR TO THE 2 ACRES PROJECT APPROVAL. AFTER APPROVAL OF THE 2 ACRES PROJECT, ONE (1) OF THE TEMPORARY RELOCATION GH's TO BE CONVERTED TO PROPAGATION AREA AS SHOWN. THE REMAINING (5) GH's TO REMAIN AS PART OF THE 2 ACRES CULTIVATION AREA.

**CULTIVATION AREA DETAIL**  
NOT TO SCALE

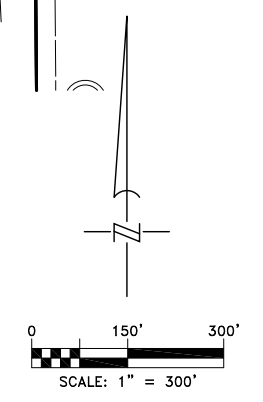
PRE-EXISTING CULTIVATION AREA = 39,000 S.F.  
EXISTING ML CULTIVATION AREA = 28,800 S.F.  
PROPOSED ML CULTIVATION AREA = 58,000 S.F.  
TOTAL ML CULTIVATION AREA = 86,800 S.F.

EXISTING PROPAGATION AREA = 2,416 S.F.  
PROPOSED PROPAGATION AREA = 6,800 S.F.

**OWNER**  
CALIFORNIA PROPERTY SOLUTIONS, LLC  
c/o YOUNG JACOBSEN  
P. O. BOX 2344  
REDWAY, CA 95560

**APPLICANT**  
PATIENT 2 PATIENT, INC  
c/o DIANE SADOSKY  
1881 BARNETT COURT, SUITE #1  
REDWAY, CA 95560

CMMLUO APPS #12415 & 12426  
APN 214-142-012  
(PRE-LOT MERGER APN 214-142-008,  
& -009 & -011)



G:\Projects\Civil\16-1886\_Jacobson\dwg\1886\_PLOT02\_CULT-2\_MJ\1867.dwg 11:41 AM

<b>DMSBERG &amp; PRESTON</b> 402 E Street Eureka, California 95501 Telephone (707) 443-3651 SURVEYORS PLANNERS ENGINEERS	DESIGNED BY: K.D.P.	DATE: 08/24/18	<b>CULTIVATION DIAGRAM - 2 ACRES RRR</b>  PATIENT 2 PATIENT, INC. In the unincorporated area of Humboldt County S/2 Section 25, T.3S., R.3E. H.B.&M.	SCALE AS SHOWN JOB NO. 16-1886 SHEET OF 2 2
	DRAWN BY: C.W.B.	DATE: 08/24/18		
	CHECKED BY:KIMBERLY D. PRESTON	DATE: 10/25/21		

GARBERVILLE AREA  
HISTORIC RAINFALL  
AVERAGES

# GARBERVILLE, CALIFORNIA (043320)

## Period of Record Monthly Climate Summary

Period of Record : 11/01/1917 to 03/31/1985

	Jan	Feb	Mar	Apr	May	Jun	Jul	Aug	Sep	Oct	Nov	Dec	Annual
Average Max. Temperature (F)							Insuff icient	Data					
Average Min. Temperature (F)							Insuff icient	Data					
Average Total Precipitation (in.)	10.75	9.16	7.35	3.70	1.35	0.37	0.05	0.42	0.74	3.72	8.48	10.81	56.90
Average Total SnowFall (in.)	0.0	0.0	0.0	0.0	0.0	0.0	0.0	0.0	0.0	0.0	0.0	0.1	0.1
Average Snow Depth (in.)	0	0	0	0	0	0	0	0	0	0	0	0	0

Percent of possible observations for period of record.



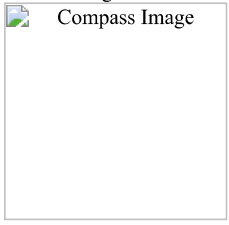
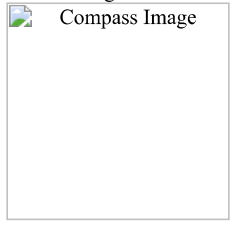
Max. Temp.: 1.1% Min. Temp.: 1.1% Precipitation: 92.5% Snowfall: 92.4% Snow Depth: 92.2%

Check [Station Metadata](#) or [Metadata graphics](#) for more detail about data completeness.

Western Regional Climate Center; [wrcc@dri.edu](mailto:wrcc@dri.edu)

GARBERVILLE AREA  
2020-2021 WATER YEAR  
RAINFALL

# Eel River Camp California

<p>Looking from the station</p> 	<p>More Images</p> 	<p>Looking to the station</p> <p style="text-align: center;"><b>Sorry, No photo available</b></p>
<p>Looking to North</p> <p>Compass Image</p> 		<p>Looking to North</p> <p>Compass Image</p> 

Tip: To view from different directions, place your mouse cursor over the compass images above. To view a larger image, click on a compass direction or the preview image.

Photos taken: May 2009

## Station Information

<b>Location</b>	Eel River Camp California		
<b>Latitude</b>	40° 08' 18"	<b>NESS ID</b>	CA2AC1F8
<b>Longitude</b>	123° 49' 25"	<b>NWS ID</b>	040421
<b>Elevation</b>	446 ft.	<b>Agency</b>	S&PF

### Cumulative Rainfall 2020-2021 Drought Water Year

October 2020 - 0.10 inches  
 November 2020 - 3.78 inches  
 December 2020 - 5.03 inches  
 January 2021 - 9.94 inches  
 February 2021 - 4.75 inches  
 March 2021 -4.05 inches  
 April 2021 - 1.04 inches  
 May 2021 - 0 inches  
 June 2021 - 0.32 inches  
 July 2021 - 0.02 inches  
 August 2021 - 0 inches  
 September -2021 - 0.95 inches

Cumulative - 29.98 inches for 2020-2021 water year (October 1st through September 30th)


**Station Summary**

## Eel River Camp California

Monthly Summary for

**October, 2020**

Day of Month	Day of Year	Total Solar Rad. ly.	Wind Ave. V. mph	Dir. Max. Deg	Air Temperature Mean Deg. Fahrenheit	Max Min Fahrenheit	Fuel Temperature Mean Deg. Fahrenheit	Max Min Fahrenheit	Humidity Mean Percent	Max Min Percent	Dew Point Deg. Fahrenheit	Wet Bulb Fahrenheit	Total Precip. inches	
<a href="#">1</a>	275	315	0.9	291	14.0	67 97	50	66 102	45	66 99	13	51	57	0.00
<a href="#">2</a>	276	362	1.4	289	24.0	67 97	49	66 105	44	60 98	11	47	55	0.00
<a href="#">3</a>	277	400	1.2	259	13.0	66 97	45	66 109	39	58 98	13	45	53	0.00
<a href="#">4</a>	278	331	1.5	345	13.0	62 84	47	62 92	41	68 98	28	49	54	0.00
<a href="#">5</a>	279	289	0.5	345	9.0	60 88	44	59 96	38	74 99	26	49	53	0.00
<a href="#">6</a>	280	340	0.6	239	12.0	59 92	43	58 102	35	66 99	14	43	50	0.00
<a href="#">7</a>	281	385	1.6	247	13.0	56 84	36	55 97	29	68 98	18	42	47	0.00
<a href="#">8</a>	282	286	1.2	234	10.0	55 78	43	57 89	38	78 99	37	47	50	0.00
<a href="#">9</a>	283	359	2.0	238	14.0	60 75	51	63 89	51	74 93	45	51	54	0.00
<a href="#">10</a>	284	148	1.2	286	15.0	59 68	52	59 73	51	90 100	72	56	57	0.09
<a href="#">11</a>	285	378	1.9	171	14.0	58 76	45	60 87	40	74 100	33	47	51	0.01
<a href="#">12</a>	286	380	1.7	322	17.0	60 82	42	62 95	37	75 100	35	50	53	0.00
<a href="#">13</a>	287	370	2.0	349	14.0	63 84	48	65 96	43	73 100	30	52	56	0.00
<a href="#">14</a>	288	376	4.6	33	20.0	65 76	55	68 88	52	63 96	26	51	56	0.00
<a href="#">15</a>	289	374	2.4	340	17.0	64 89	48	64 99	42	61 95	22	47	53	0.00
<a href="#">16</a>	290	374	2.0	349	19.0	67 98	42	66 109	37	56 98	11	44	53	0.00
<a href="#">17</a>	291	362	2.3	26	19.0	65 90	46	66 101	39	61 96	22	48	55	0.00
<a href="#">18</a>	292	360	2.9	31	21.0	62 83	45	63 95	39	67 99	26	48	53	0.00
<a href="#">19</a>	293	365	3.0	30	18.0	60 78	48	61 90	43	74 98	39	50	54	0.00
<a href="#">20</a>	294	348	3.1	21	18.0	62 82	46	64 94	43	66 97	31	48	54	0.00
<a href="#">21</a>	295	345	5.8	42	29.0	58 72	47	59 84	42	69 95	44	47	51	0.00
<a href="#">22</a>	296	348	4.9	43	22.0	55 71	40	56 84	34	56 84	26	37	45	0.00
<a href="#">23</a>	297	343	2.0	326	18.0	53 77	33	53 90	26	60 98	17	35	43	0.00
<a href="#">24</a>	298	302	2.8	25	19.0	54 68	42	56 80	37	75 94	52	46	49	0.00
<a href="#">25</a>	299	314	2.2	330	15.0	51 75	35	51 83	27	63 96	18	36	43	0.00
<a href="#">26</a>	300	332	0.9	322	14.0	50 80	28	49 93	21	40 73	3	19	37	0.00
<a href="#">27</a>	301	338	0.9	169	13.0	53 86	31	51 98	24	48 79	12	29	41	0.00
<a href="#">28</a>	302	332	0.6	236	8.0	53 85	32	51 98	24	58 95	14	34	42	0.00
<a href="#">29</a>	303	326	0.8	237	8.0	51 83	32	50 96	25	63 97	17	35	42	0.00
<a href="#">30</a>	304	318	1.8	186	14.0	52 78	32	51 91	25	63 96	23	36	43	0.00
<a href="#">31</a>	305	313	0.4	243	5.0	53 84	36	53 94	30	74 99	22	42	46	0.00

MONTHLY STATISTICS

	Total Solar Rad. ly.	Wind Ave. V. mph	Dir. Max. Deg	Air Temperature Mean Deg. Fahrenheit	Max Min Fahrenheit	Fuel Temperature Mean Deg. Fahrenheit	Max Min Fahrenheit	Humidity Mean Percent	Max Min Percent	Dew Point Deg. Fahrenheit	Wet Bulb Fahrenheit	Total Precip. inches	
Total	10512											0.10	
Ave.	339	2.0	314	15.5	58.7 82.5	42.4	59.0 93.5	36.8	66 96	26	44	50	
Max.	400	5.8		29.0	67 98	55	68 109	52	90 100	72	56	57	0.09
Min.	148	0.4		5.0	50 68	28	49 73	21	40 73	3	19	37	0.00

Data are subject to further review and editing. Please refer any questions to the Western Regional Climate Center.

° 1 ly = 1 cal/cm<sup>2</sup> = 4.1855 J/cm<sup>2</sup> = 3.6855 BTU/ft<sup>2</sup> = .01163 KW-hr/m<sup>2</sup>



Station Summary

## Eel River Camp California

Monthly Summary for

**November, 2020**

Day of Month	Day Year	Total Solar Rad. ly.	Wind Ave. V. mph	Dir. Max. Deg	Air Temperature Mean Deg. Fahrenheit	Max Fahrenheit	Min Fahrenheit	Fuel Temperature Mean Deg. Fahrenheit	Max Fahrenheit	Min Fahrenheit	Humidity Mean Percent	Max Percent	Min Percent	Dew Point Deg. Fahrenheit	Wet Bulb Fahrenheit	Total Precip. inches	
<a href="#">1</a>	306	309	0.8	234	9.0	53	85	36	52	98	30	70	99	19	40	46	0.00
<a href="#">2</a>	307	305	1.0	240	13.0	51	85	34	50	95	28	66	98	13	37	43	0.00
<a href="#">3</a>	308	297	0.6	215	8.0	50	80	32	50	90	26	65	97	17	35	42	0.00
<a href="#">4</a>	309	285	0.9	283	8.0	57	80	41	59	93	37	66	98	30	44	49	0.00
<a href="#">5</a>	310	282	2.1	194	14.0	60	81	46	63	90	41	74	100	33	50	54	0.00
<a href="#">6</a>	311	192	1.8	75	14.0	49	56	45	49	66	42	84	98	62	44	46	0.07
<a href="#">7</a>	312	282	5.2	347	25.0	50	57	44	51	69	42	68	95	43	39	44	0.05
<a href="#">8</a>	313	239	4.4	323	28.0	44	52	29	43	61	24	69	95	40	33	39	0.06
<a href="#">9</a>	314	226	1.7	342	18.0	39	57	26	39	66	19	70	97	29	28	34	0.00
<a href="#">10</a>	315	209	0.9	245	8.0	45	62	33	45	72	29	73	97	46	36	40	0.00
<a href="#">11</a>	316	250	1.2	306	9.0	43	63	33	44	74	26	81	99	36	36	39	0.00
<a href="#">12</a>	317	209	0.8	237	7.0	44	59	34	46	69	33	80	98	46	38	41	0.00
<a href="#">13</a>	318	87	1.4	304	11.0	47	57	42	48	59	42	95	99	88	46	46	0.78
<a href="#">14</a>	319	151	1.0	271	6.0	47	55	42	49	60	43	91	100	63	45	46	0.00
<a href="#">15</a>	320	100	0.5	244	6.0	54	61	47	55	63	48	96	99	88	53	53	0.48
<a href="#">16</a>	321	203	0.8	227	5.0	57	69	50	57	73	48	95	100	74	55	55	0.03
<a href="#">17</a>	322	35	3.0	275	26.0	54	58	48	53	57	46	93	100	67	52	52	1.17
<a href="#">18</a>	323	179	2.0	226	19.0	52	59	47	53	63	47	90	99	70	49	50	0.96
<a href="#">19</a>	324	168	1.3	271	7.0	47	57	40	48	66	38	93	100	65	44	45	0.05
<a href="#">20</a>	325	238	1.2	352	13.0	43	59	37	46	71	35	88	100	39	39	41	0.01
<a href="#">21</a>	326	201	1.2	281	6.0	41	57	35	44	66	35	93	100	57	39	40	0.00
<a href="#">22</a>	327	88	1.0	249	8.0	41	47	35	42	51	37	97	100	81	40	41	0.01
<a href="#">23</a>	328	215	1.9	327	19.0	48	59	41	49	69	40	87	99	57	44	45	0.01
<a href="#">24</a>	329	234	1.6	164	14.0	47	62	37	49	71	34	86	99	47	42	44	0.07
<a href="#">25</a>	330	158	1.3	250	15.0	43	53	37	44	60	34	92	100	59	41	42	0.01
<a href="#">26</a>	331	237	1.2	229	13.0	41	58	33	43	69	31	88	100	46	37	39	0.00
<a href="#">27</a>	332	187	1.1	243	5.0	40	59	34	41	69	30	92	100	53	37	38	0.00
<a href="#">28</a>	333	187	0.8	222	4.0	38	58	32	41	68	33	92	99	52	36	37	0.01
<a href="#">29</a>	334	157	0.7	253	6.0	38	54	32	40	63	30	94	99	59	36	37	0.00
<a href="#">30</a>	335	174	1.2	259	9.0	42	58	33	44	67	34	91	100	52	39	40	0.01

MONTHLY STATISTICS

	Total Solar Rad. ly.	Wind Ave. V. mph	Dir. Max. Deg	Air Temperature Mean Deg. Fahrenheit	Max Fahrenheit	Min Fahrenheit	Fuel Temperature Mean Deg. Fahrenheit	Max Fahrenheit	Min Fahrenheit	Humidity Mean Percent	Max Percent	Min Percent	Dew Point Deg. Fahrenheit	Wet Bulb Fahrenheit	Total Precip. inches
Total	6084														3.78
Ave.	203	1.5	263	11.8	46.8	61.9	37.8	47.8	70.3	35.4	84	99	51	41	44
Max.	309	5.2		28.0	60	85	50	63	98	48	97	100	88	55	55
Min.	35	0.5		4.0	38	47	26	39	51	19	65	95	13	28	34

Data are subject to further review and editing. Please refer any questions to the Western Regional Climate Center.

° 1 ly = 1 cal/cm<sup>2</sup> = 4.1855 J/cm<sup>2</sup> = 3.6855 BTU/ft<sup>2</sup> = .01163 KW-hr/m<sup>2</sup>

[Return to previous form.](#)

[Return to WRCC Home Page.](#)

Station Summary

## Eel River Camp California

Monthly Summary for

**December, 2020**

Day of Month	Day Year	Total Solar Rad. ly.	Wind Ave. V. mph	Dir. Max. Deg	Air Temperature Mean Deg. Fahrenheit	Max Fahrenheit	Min Fahrenheit	Fuel Temperature Mean Deg. Fahrenheit	Max Fahrenheit	Min Fahrenheit	Humidity Mean Percent	Max Percent	Min Percent	Dew Point Deg. Fahrenheit	Wet Bulb Fahrenheit	Total Precip. inches	
<a href="#">1</a>	336	224	0.9	251	13.0	46	63	36	47	72	34	87	99	49	42	43	0.00
<a href="#">2</a>	337	169	0.4	243	5.0	44	61	38	46	70	39	94	100	57	42	43	0.00
<a href="#">3</a>	338	115	0.3	272	4.0	43	53	39	44	60	37	96	100	73	42	42	0.01
<a href="#">4</a>	339	150	0.8	299	4.0	41	58	37	43	67	34	95	100	62	40	41	0.00
<a href="#">5</a>	340	84	0.8	243	9.0	42	51	35	44	55	36	97	100	84	42	42	0.02
<a href="#">6</a>	341	216	1.7	299	12.0	48	61	37	49	70	33	87	99	48	43	45	0.00
<a href="#">7</a>	342	195	1.0	249	6.0	44	65	36	46	75	36	91	100	49	41	42	0.01
<a href="#">8</a>	343	175	1.0	291	5.0	42	60	35	44	70	36	94	100	59	40	41	0.00
<a href="#">9</a>	344	140	2.5	16	17.0	45	56	38	46	62	33	92	100	73	43	44	0.01
<a href="#">10</a>	345	212	1.8	339	16.0	45	59	34	46	69	29	82	99	40	39	42	0.00
<a href="#">11</a>	346	60	0.5	183	5.0	40	44	35	41	46	35	97	99	93	39	40	0.26
<a href="#">12</a>	347	75	0.7	191	6.0	48	51	44	49	54	44	96	99	88	47	47	0.11
<a href="#">13</a>	348	60	1.6	311	14.0	49	53	41	49	53	38	95	99	82	47	48	1.26
<a href="#">14</a>	349	128	1.4	251	7.0	43	52	40	45	59	41	95	99	72	42	43	0.01
<a href="#">15</a>	350	62	0.5	145	5.0	45	48	41	46	50	42	98	100	92	44	45	0.11
<a href="#">16</a>	351	57	1.5	199	18.0	51	56	47	52	57	48	97	99	91	50	50	1.00
<a href="#">17</a>	352	159	2.5	325	20.0	45	53	37	46	61	35	87	99	59	41	43	0.11
<a href="#">18</a>	353	184	0.7	218	5.0	42	56	36	44	67	33	92	100	59	39	40	0.00
<a href="#">19</a>	354	131	0.4	279	5.0	44	54	37	46	62	38	95	100	73	42	43	0.01
<a href="#">20</a>	355	125	0.5	245	10.0	49	57	45	50	65	43	95	100	74	47	48	0.00
<a href="#">21</a>	356	70	1.1	270	20.0	49	53	44	50	56	41	92	100	79	47	48	0.20
<a href="#">22</a>	357	213	1.7	293	14.0	42	54	33	42	64	30	88	99	57	38	40	0.00
<a href="#">23</a>	358	165	1.5	261	6.0	38	53	33	41	64	31	93	99	62	36	37	0.00
<a href="#">24</a>	359	169	1.5	270	21.0	41	58	32	44	69	34	92	100	66	39	40	0.01
<a href="#">25</a>	360	33	3.2	197	20.0	52	56	47	51	54	47	85	93	55	47	49	1.00
<a href="#">26</a>	361	208	1.7	30	12.0	48	57	43	50	68	43	91	99	64	46	47	0.44
<a href="#">27</a>	362	197	1.2	232	6.0	43	57	39	46	69	37	90	99	51	40	42	0.00
<a href="#">28</a>	363	150	1.2	225	5.0	40	53	36	42	65	34	95	100	68	38	39	0.00
<a href="#">29</a>	364	143	1.0	231	5.0	38	51	34	40	60	34	97	100	73	37	37	0.01
<a href="#">30</a>	365	61	0.8	191	7.0	40	45	34	41	46	34	98	100	89	40	40	0.44
<a href="#">31</a>	366	116	0.7	212	6.0	46	54	42	47	58	43	95	100	75	44	45	0.01

MONTHLY STATISTICS

	Total Solar Rad. ly.	Wind Ave. V. mph	Dir. Max. Deg	Air Temperature Mean Deg. Fahrenheit	Max Fahrenheit	Min Fahrenheit	Fuel Temperature Mean Deg. Fahrenheit	Max Fahrenheit	Min Fahrenheit	Humidity Mean Percent	Max Percent	Min Percent	Dew Point Deg. Fahrenheit	Wet Bulb Fahrenheit	Total Precip. inches
Total	4247														5.03
Ave.	137	1.2	255	9.9	44.3	54.9	38.2	45.6	61.8	37.2	93	99	68	42	43
Max.	224	3.2		21.0	52	65	47	52	75	48	98	100	93	50	50
Min.	33	0.3		4.0	38	44	32	40	46	29	82	93	40	36	37

Data are subject to further review and editing. Please refer any questions to the Western Regional Climate Center.

° 1 ly = 1 cal/cm<sup>2</sup> = 4.1855 J/cm<sup>2</sup> = 3.6855 BTU/ft<sup>2</sup> = .01163 KW-hr/m<sup>2</sup>


**Station Summary**

## Eel River Camp California

Monthly Summary for

**January, 2021**

Day of Month	Day of Year	Total Solar Rad. ly.	Wind Ave. V. mph	Dir. Max. Deg	Air Temperature Mean Deg. Fahrenheit	Max Min Fahrenheit	Fuel Temperature Mean Deg. Fahrenheit	Max Min Fahrenheit	Humidity Mean Percent	Max Min Percent	Dew Point Deg. Fahrenheit	Wet Bulb Fahrenheit	Total Precip. inches
<a href="#">1</a>	1	125	1.3	205	14.0	47 55 43	49 64 44	93 100 64	45	46	0.35		
<a href="#">2</a>	2	83	0.9	224	9.0	50 55 47	51 57 48	95 100 80	49	49	0.14		
<a href="#">3</a>	3	85	1.5	290	10.0	52 57 49	52 59 49	94 99 83	50	51	0.13		
<a href="#">4</a>	4	64	2.8	226	23.0	50 57 44	49 55 43	92 99 81	47	48	1.47		
<a href="#">5</a>	5	176	0.8	75	8.0	45 55 40	47 65 38	90 98 63	42	43	0.00		
<a href="#">6</a>	6	50	1.1	351	8.0	45 51 40	46 52 41	99 100 97	44	45	0.63		
<a href="#">7</a>	7	141	1.0	223	10.0	47 53 42	48 60 42	93 99 73	45	45	0.39		
<a href="#">8</a>	8	191	1.1	329	12.0	47 56 40	49 66 38	89 99 49	43	45	0.28		
<a href="#">9</a>	9	166	1.7	292	7.0	43 55 38	45 66 39	93 100 63	41	42	0.00		
<a href="#">10</a>	10	110	0.6	140	6.0	48 55 43	49 58 44	96 100 82	47	47	0.24		
<a href="#">11</a>	11	145	1.3	359	9.0	49 57 46	51 67 46	91 99 64	46	47	0.00		
<a href="#">12</a>	12	25	1.3	136	10.0	53 57 48	54 57 48	96 99 92	52	53	1.56		
<a href="#">13</a>	13	123	1.0	17	9.0	57 64 54	57 69 52	95 100 78	55	56	0.34		
<a href="#">14</a>	14	190	0.9	73	6.0	54 67 49	56 76 49	92 100 65	51	52	0.00		
<a href="#">15</a>	15	114	0.5	180	7.0	51 60 47	53 67 47	96 100 75	50	50	0.00		
<a href="#">16</a>	16	193	1.5	33	13.0	52 65 42	54 74 39	85 100 54	47	49	0.01		
<a href="#">17</a>	17	232	1.1	11	12.0	49 68 38	51 79 37	85 100 43	44	46	0.00		
<a href="#">18</a>	18	252	1.7	348	13.0	48 70 36	48 80 32	77 98 28	40	44	0.00		
<a href="#">19</a>	19	253	1.1	275	12.0	43 66 31	43 76 28	81 99 21	35	39	0.01		
<a href="#">20</a>	20	229	0.4	240	6.0	39 62 29	40 73 26	87 98 40	34	36	0.00		
<a href="#">21</a>	21	152	0.8	253	10.0	41 56 34	42 60 32	88 99 56	37	39	0.13		
<a href="#">22</a>	22	189	1.7	20	15.0	45 52 40	47 60 39	84 98 62	40	42	0.13		
<a href="#">23</a>	23	260	2.4	350	19.0	44 55 36	45 68 34	82 99 53	38	41	0.00		
<a href="#">24</a>	24	62	2.4	314	23.0	41 45 37	41 47 34	89 95 78	38	40	0.43		
<a href="#">25</a>	25	161	3.1	331	24.0	40 46 34	41 54 33	80 97 60	34	37	0.00		
<a href="#">26</a>	26	36	1.8	262	16.0	36 41 32	36 40 33	93 99 81	34	35	1.18		
<a href="#">27</a>	27	101	3.4	213	24.0	45 50 38	45 51 39	87 98 67	41	43	0.62		
<a href="#">28</a>	28		1.2	12	7.0	43 47 41	44 53 42	95 98 82	42	43	0.91		
<a href="#">29</a>	29	190	1.4	322	10.0	44 52 38	46 64 39	87 96 61	40	41	0.03		
<a href="#">30</a>	30	108	1.7	269	15.0	47 55 42	48 57 42	88 98 60	43	45	0.07		
<a href="#">31</a>	31	40	2.2	265	13.0	50 54 45	49 54 45	92 98 78	48	48	0.89		

MONTHLY STATISTICS

	Total Solar Rad. ly.	Wind Ave. V. mph	Dir. Max. Deg	Air Temperature Mean Deg. Fahrenheit	Max Min Fahrenheit	Fuel Temperature Mean Deg. Fahrenheit	Max Min Fahrenheit	Humidity Mean Percent	Max Min Percent	Dew Point Deg. Fahrenheit	Wet Bulb Fahrenheit	Total Precip. inches
Total	4246											9.94
Ave.	142	1.5	294	12.3	46.6 56.1 40.7	47.6 62.2 40.1	90 99 66	43	45			
Max.	260	3.4		24.0	57 70 54	57 80 52	99 100 97	55	56	1.56		
Min.	25	0.4		6.0	36 41 29	36 40 26	77 95 21	34	35	0.00		

Data are subject to further review and editing. Please refer any questions to the Western Regional Climate Center.

° 1 ly = 1 cal/cm<sup>2</sup> = 4.1855 J/cm<sup>2</sup> = 3.6855 BTU/ft<sup>2</sup> = .01163 KW-hr/m<sup>2</sup>

Station Summary

## Eel River Camp California

Monthly Summary for

**February, 2021**

Day of Month	Day of Year	Total Solar Rad. ly.	Wind Ave. V. mph	Wind Dir. Max. Deg	Air Temperature Mean Deg. Fahrenheit	Air Temperature Max Fahrenheit	Air Temperature Min Fahrenheit	Fuel Temperature Mean Deg. Fahrenheit	Fuel Temperature Max Fahrenheit	Fuel Temperature Min Fahrenheit	Humidity Mean Percent	Humidity Max Percent	Humidity Min Percent	Dew Point Deg. Fahrenheit	Wet Bulb Fahrenheit	Total Precip. inches	
<a href="#">1</a>	32	42	2.3	252	29.0	48	54	42	48	53	40	95	98	88	47	47	1.27
<a href="#">2</a>	33	201	1.5	266	13.0	46	55	38	47	61	36	89	99	52	43	44	0.07
<a href="#">3</a>	34	216	2.4	320	18.0	43	52	35	44	61	32	85	98	56	38	41	0.26
<a href="#">4</a>	35	293	1.6	320	14.0	42	60	32	44	69	31	84	99	45	37	39	0.00
<a href="#">5</a>	36	304	2.8	335	16.0	45	59	33	48	70	34	85	99	55	40	42	0.01
<a href="#">6</a>	37	311	3.3	338	17.0	47	63	36	48	72	34	79	98	42	39	42	0.00
<a href="#">7</a>	38	301	2.9	357	16.0	45	61	36	46	69	34	80	97	45	39	42	0.00
<a href="#">8</a>	39	176	1.3	19	8.0	46	56	41	48	64	41	84	96	61	41	44	0.00
<a href="#">9</a>	40	154	0.5	280	5.0	47	56	40	48	63	37	88	98	58	43	45	0.00
<a href="#">10</a>	41	257	0.9	277	7.0	47	65	40	50	76	41	87	99	45	43	44	0.00
<a href="#">11</a>	42	42	1.1	240	11.0	45	53	42	46	52	42	97	99	87	45	45	0.84
<a href="#">12</a>	43	148	1.0	186	5.0	49	54	45	50	59	45	93	99	76	47	48	0.09
<a href="#">13</a>	44	220	2.1	332	15.0	47	55	38	48	62	36	86	99	53	42	44	0.42
<a href="#">14</a>	45	87	0.2	318	4.0	44	47	39	45	49	40	97	99	93	43	43	0.45
<a href="#">15</a>	46	139	1.8	157	14.0	49	55	43	50	57	43	92	99	78	47	48	0.12
<a href="#">16</a>	47	283	2.3	323	21.0	47	55	41	49	64	40	82	99	53	41	43	0.00
<a href="#">17</a>	48	310	1.5	5	11.0	47	60	35	48	70	33	76	98	37	38	42	0.00
<a href="#">18</a>	49	73	0.8	252	8.0	44	52	36	45	54	34	94	99	76	42	43	0.63
<a href="#">19</a>	50	198	2.0	174	16.0	48	56	43	50	63	43	87	99	54	44	46	0.35
<a href="#">20</a>	51	271	4.5	358	22.0	47	54	41	48	64	39	78	97	57	39	43	0.24
<a href="#">21</a>	52	358	3.5	46	16.0	47	61	34	49	71	32	75	97	44	38	42	0.00
<a href="#">22</a>	53	339	3.7	37	19.0	50	64	40	51	76	39	78	97	51	43	46	0.00
<a href="#">23</a>	54	381	3.8	64	17.0	51	60	44	52	72	41	70	91	40	41	45	0.00
<a href="#">24</a>	55	387	4.5	36	20.0	46	58	34	47	67	31	70	96	42	36	41	0.00
<a href="#">25</a>	56	388	3.5	349	22.0	47	63	33	49	75	31	72	97	39	37	42	0.00
<a href="#">26</a>	57	275	6.5	11	34.0	46	53	39	47	61	38	65	87	53	35	41	0.00
<a href="#">27</a>	58	387	4.8	29	34.0	47	55	42	49	66	38	62	78	44	34	41	0.00
<a href="#">28</a>	59	398	2.2	34	15.0	47	67	32	48	76	30	74	97	37	37	42	0.00

MONTHLY STATISTICS

	Total Solar Rad. ly.	Wind Ave. V. mph	Wind Dir. Max. Deg	Air Temperature Mean Deg. Fahrenheit	Air Temperature Max Fahrenheit	Air Temperature Min Fahrenheit	Fuel Temperature Mean Deg. Fahrenheit	Fuel Temperature Max Fahrenheit	Fuel Temperature Min Fahrenheit	Humidity Mean Percent	Humidity Max Percent	Humidity Min Percent	Dew Point Deg. Fahrenheit	Wet Bulb Fahrenheit	Total Precip. inches	
Total	6941														4.75	
Ave.	248	2.5	351	16.0	46.6	57.2	38.4	47.9	64.9	37.0	82	97	56	41	43	
Max.	398	6.5		34.0	51	67	45	52	76	45	97	99	93	47	48	1.27
Min.	42	0.2		4.0	42	47	32	44	49	30	62	78	37	34	39	0.00

Data are subject to further review and editing. Please refer any questions to the Western Regional Climate Center.

° 1 ly = 1 cal/cm<sup>2</sup> = 4.1855 J/cm<sup>2</sup> = 3.6855 BTU/ft<sup>2</sup> = .01163 KW-hr/m<sup>2</sup>

[Return to previous form.](#)

[Return to WRCC Home Page.](#)


**Station Summary**

## Eel River Camp California

Monthly Summary for

**March, 2021**

Day of Month	Day of Year	Total Solar Rad. ly.	Wind Ave. V. mph	Dir. Deg.	Max. mph	Air Temperature Mean Deg. Fahrenheit	Max Fahrenheit	Min Fahrenheit	Fuel Temperature Mean Deg. Fahrenheit	Max Fahrenheit	Min Fahrenheit	Humidity Mean Percent	Max Percent	Min Percent	Dew Point Deg. Fahrenheit	Wet Bulb Fahrenheit	Total Precip. inches
<a href="#">1</a>	60	336	2.1	262	20.0	44	66	34	45	77	31	82	99	26	37	40	0.00
<a href="#">2</a>	61	361	0.8	275	7.0	46	72	35	49	81	30	79	99	18	38	41	0.00
<a href="#">3</a>	62	405	1.3	255	14.0	45	70	31	46	83	28	72	98	17	33	39	0.00
<a href="#">4</a>	63	404	2.8	215	23.0	45	63	33	46	73	30	74	97	36	36	40	0.00
<a href="#">5</a>	64	133	3.5	192	22.0	49	60	37	50	66	37	77	96	56	42	45	1.20
<a href="#">6</a>	65	404	1.2	233	11.0	44	58	35	47	72	33	80	97	42	37	40	0.01
<a href="#">7</a>	66	404	1.7	253	11.0	45	59	36	48	72	34	79	97	42	38	41	0.03
<a href="#">8</a>	67	205	2.4	255	17.0	42	50	35	43	56	34	89	98	71	38	40	0.31
<a href="#">9</a>	68	126	2.0	241	19.0	42	48	38	42	51	38	90	97	76	39	41	0.86
<a href="#">10</a>	69	374	1.9	274	22.0	42	54	36	45	67	34	85	98	49	37	40	0.05
<a href="#">11</a>	70	396	2.0	6	17.0	44	59	35	47	72	33	80	99	39	37	40	0.01
<a href="#">12</a>	71	436	1.6	277	14.0	47	68	34	50	80	30	75	99	25	37	42	0.00
<a href="#">13</a>	72	356	2.3	188	13.0	46	61	38	49	76	37	78	97	54	39	43	0.00
<a href="#">14</a>	73	72	2.3	230	20.0	43	50	37	43	51	37	88	97	66	39	41	0.72
<a href="#">15</a>	74	396	7.4	4	40.0	43	49	35	44	59	33	65	93	48	31	37	0.08
<a href="#">16</a>	75	472	2.6	336	18.0	41	57	29	43	68	28	71	97	31	30	36	0.00
<a href="#">17</a>	76	424	2.9	227	23.0	42	58	30	45	70	28	79	98	49	35	39	0.02
<a href="#">18</a>	77	179	3.2	213	23.0	48	55	41	49	59	42	90	98	71	45	47	0.61
<a href="#">19</a>	78	270	1.8	306	17.0	46	54	40	47	60	39	90	99	62	43	44	0.14
<a href="#">20</a>	79	407	2.7	292	17.0	45	56	35	48	71	32	80	99	51	38	42	0.01
<a href="#">21</a>	80	456	3.5	355	23.0	46	57	35	48	69	32	73	98	49	37	41	0.00
<a href="#">22</a>	81	285	3.6	0	31.0	48	58	39	51	67	38	71	92	56	39	43	0.00
<a href="#">23</a>	82	506	3.3	19	19.0	48	62	37	49	73	33	67	96	36	36	42	0.00
<a href="#">24</a>	83	438	3.1	334	21.0	48	62	36	50	72	32	74	97	40	38	43	0.00
<a href="#">25</a>	84	418	4.9	343	28.0	47	56	37	49	68	33	69	95	49	37	42	0.00
<a href="#">26</a>	85	526	2.2	348	14.0	48	69	32	50	80	28	71	97	32	38	42	0.00
<a href="#">27</a>	86	506	1.1	277	13.0	53	80	35	55	91	32	71	98	21	40	45	0.00
<a href="#">28</a>	87	524	2.5	351	17.0	52	76	37	55	89	33	70	99	21	39	45	0.00
<a href="#">29</a>	88		6.0	9	25.0	49	59	40	51	69	38	63	92	36	36	42	0.00
<a href="#">30</a>	89	550	3.0	13	15.0	51	75	33	52	84	30	64	96	22	36	43	0.00
<a href="#">31</a>	90	557	1.5	259	13.0	53	80	33	54	91	28	63	98	12	35	44	0.00

MONTHLY STATISTICS

	Total Solar Rad. ly.	Wind Ave. V. mph	Dir. Deg.	Max. mph	Air Temperature Mean Deg. Fahrenheit	Max Fahrenheit	Min Fahrenheit	Fuel Temperature Mean Deg. Fahrenheit	Max Fahrenheit	Min Fahrenheit	Humidity Mean Percent	Max Percent	Min Percent	Dew Point Deg. Fahrenheit	Wet Bulb Fahrenheit	Total Precip. inches
Total	11325															4.05
Ave.	378	2.7	292	18.9	46.2	61.3	35.4	48.0	71.5	33.1	76	97	42	37	42	
Max.	557	7.4		40.0	53	80	41	55	91	42	90	99	76	45	47	1.20
Min.	72	0.8		7.0	41	48	29	42	51	28	63	92	12	30	36	0.00

Data are subject to further review and editing. Please refer any questions to the Western Regional Climate Center.

° 1 ly = 1 cal/cm<sup>2</sup> = 4.1855 J/cm<sup>2</sup> = 3.6855 BTU/ft<sup>2</sup> = .01163 KW-hr/m<sup>2</sup>

Station Summary

## Eel River Camp California

Monthly Summary for

**April, 2021**

Day of Month	Day of Year	Total Solar Rad. ly.	Wind Ave. V. mph	Dir. Max. Deg	Air Temperature Mean Deg. Fahrenheit	Max Min Fahrenheit	Fuel Temperature Mean Deg. Fahrenheit	Max Min Fahrenheit	Humidity Mean Percent	Max Min Percent	Dew Point Deg. Fahrenheit	Wet Bulb Fahrenheit	Total Precip. inches
<a href="#">1</a>	91	555	1.8	238	16.0	53 78 33	53 88 29	60 96 13	33	43	0.00		
<a href="#">2</a>	92	497	2.0	258	15.0	50 72 32	51 84 29	65 96 19	35	42	0.00		
<a href="#">3</a>	93	354	2.9	222	17.0	50 59 39	53 70 35	73 94 55	41	45	0.00		
<a href="#">4</a>	94	372	1.7	239	14.0	51 65 44	54 76 43	74 93 43	42	46	0.00		
<a href="#">5</a>	95	503	2.2	344	15.0	51 70 37	54 82 34	70 92 35	41	45	0.00		
<a href="#">6</a>	96	543	2.0	253	14.0	50 74 34	52 85 30	70 98 18	38	43	0.00		
<a href="#">7</a>	97	504	2.6	85	16.0	50 64 44	53 77 40	72 89 48	41	45	0.00		
<a href="#">8</a>	98	575	3.3	355	17.0	49 66 37	52 79 34	67 93 39	38	43	0.00		
<a href="#">9</a>	99	522	5.1	25	19.0	48 60 37	51 72 33	72 94 54	39	43	0.00		
<a href="#">10</a>	100	589	6.0	18	25.0	49 63 36	52 77 33	63 92 42	36	43	0.00		
<a href="#">11</a>	101	582	3.8	355	19.0	50 68 35	51 79 31	68 95 39	38	43	0.00		
<a href="#">12</a>	102	599	3.0	26	20.0	53 76 34	54 87 29	63 98 19	36	44	0.00		
<a href="#">13</a>	103	605	3.5	354	28.0	51 69 36	52 81 32	59 96 22	34	43	0.00		
<a href="#">14</a>	104	604	1.9	327	21.0	51 73 32	51 86 27	58 97 19	32	41	0.00		
<a href="#">15</a>	105	613	2.0	244	14.0	51 73 31	51 87 27	58 96 14	31	41	0.00		
<a href="#">16</a>	106	603	1.6	297	17.0	55 81 33	56 93 29	62 96 20	38	45	0.00		
<a href="#">17</a>	107	606	1.5	345	17.0	58 83 38	59 96 33	60 98 17	39	47	0.00		
<a href="#">18</a>	108	619	1.8	341	18.0	59 85 36	59 96 31	57 97 16	39	48	0.00		
<a href="#">19</a>	109	612	4.0	24	21.0	55 73 39	56 85 34	62 95 23	40	46	0.00		
<a href="#">20</a>	110	537	5.2	38	24.0	53 62 47	57 76 45	72 88 56	45	48	0.00		
<a href="#">21</a>	111	620	4.0	27	18.0	55 73 42	58 86 37	68 95 28	42	48	0.00		
<a href="#">22</a>	112	625	5.0	45	23.0	55 73 41	58 87 39	65 95 26	41	47	0.00		
<a href="#">23</a>	113	523	2.5	182	16.0	55 74 38	57 87 33	62 97 26	39	46	0.00		
<a href="#">24</a>	114	443	3.5	204	19.0	51 58 47	54 71 46	72 93 50	42	46	0.01		
<a href="#">25</a>	115	321	2.1	268	15.0	47 54 41	49 61 39	86 97 62	43	45	1.03		
<a href="#">26</a>	116	382	1.9	286	13.0	48 58 37	50 71 32	77 96 51	40	44	0.00		
<a href="#">27</a>	117	638	2.6	341	17.0	53 74 37	57 87 37	68 99 26	40	46	0.00		
<a href="#">28</a>	118	661	1.7	279	15.0	59 83 37	61 96 32	63 98 16	41	49	0.00		
<a href="#">29</a>	119	634	2.4	34	16.0	59 81 41	61 94 36	59 97 29	42	49	0.00		
<a href="#">30</a>	120	613	2.5	346	16.0	58 75 39	61 88 34	64 95 30	44	50	0.00		

MONTHLY STATISTICS

	Total Solar Rad. ly.	Wind Ave. V. mph	Dir. Max. Deg	Air Temperature Mean Deg. Fahrenheit	Max Min Fahrenheit	Fuel Temperature Mean Deg. Fahrenheit	Max Min Fahrenheit	Humidity Mean Percent	Max Min Percent	Dew Point Deg. Fahrenheit	Wet Bulb Fahrenheit	Total Precip. inches
Total	16455											1.04
Ave.	548	2.9	334	17.8	52.7 70.6 37.8	54.7 82.8 34.1	66 95 32	39	45			
Max.	661	6.0		28.0	59 85 47	61 96 46	86 99 62	45	50	1.03		
Min.	321	1.5		13.0	47 54 31	49 61 27	57 88 13	31	41	0.00		

Data are subject to further review and editing. Please refer any questions to the Western Regional Climate Center.

° 1 ly = 1 cal/cm<sup>2</sup> = 4.1855 J/cm<sup>2</sup> = 3.6855 BTU/ft<sup>2</sup> = .01163 KW-hr/m<sup>2</sup>

[Return to previous form.](#)

[Return to WRCC Home Page.](#)




**Station Summary**

## Eel River Camp California

Monthly Summary for

**May, 2021**

Day of Month	Day of Year	Total Solar Rad. ly.	Wind Ave. V. mph	Dir. Max. Deg	Air Temperature Mean Deg. Fahrenheit	Max Min Fahrenheit	Fuel Temperature Mean Deg. Fahrenheit	Max Min Fahrenheit	Humidity Mean Percent	Max Min Percent	Dew Point Deg. Fahrenheit	Wet Bulb Fahrenheit	Total Precip. inches
<a href="#">1</a>	121	579	3.8	11	21.0	56 66 49	60 80 47	73 97 55	47	51	0.00		
<a href="#">2</a>	122	637	3.9	107	20.0	57 67 50	62 83 48	66 83 43	45	50	0.00		
<a href="#">3</a>	123	661	5.2	46	27.0	59 73 49	62 86 45	61 87 31	44	50	0.00		
<a href="#">4</a>	124	674	4.4	17	23.0	60 73 45	62 87 40	64 94 35	46	51	0.00		
<a href="#">5</a>	125	648	2.3	293	17.0	63 87 43	65 101 39	63 97 20	46	52	0.00		
<a href="#">6</a>	126	513	3.5	357	24.0	56 73 41	59 89 35	68 97 42	45	49	0.00		
<a href="#">7</a>	127	686	5.8	8	27.0	54 62 47	58 79 44	57 75 42	39	46	0.00		
<a href="#">8</a>	128	671	5.9	55	34.0	57 71 46	61 86 43	56 81 30	40	47	0.00		
<a href="#">9</a>	129	670	5.2	62	30.0	58 69 49	61 81 46	63 81 39	44	50	0.00		
<a href="#">10</a>	130	699	3.6	38	18.0	60 84 42	64 98 39	62 96 25	44	51	0.00		
<a href="#">11</a>	131	694	2.7	333	16.0	63 87 41	65 101 36	59 97 19	44	51	0.00		
<a href="#">12</a>	132	693	2.8	24	16.0	64 88 43	67 102 37	59 97 24	46	53	0.00		
<a href="#">13</a>	133	678	3.2	57	19.0	61 83 44	65 95 39	64 96 25	46	52	0.00		
<a href="#">14</a>	134	634	5.2	63	23.0	56 69 49	60 82 49	70 84 49	46	50	0.00		
<a href="#">15</a>	135	651	4.3	59	19.0	60 78 46	64 91 42	65 93 34	47	52	0.00		
<a href="#">16</a>	136	668	2.8	9	15.0	61 91 44	66 107 41	66 95 20	47	52	0.00		
<a href="#">17</a>	137	689	4.2	45	21.0	58 74 44	61 88 42	68 94 42	46	50	0.00		
<a href="#">18</a>	138	709	3.4	344	20.0	56 71 42	59 86 37	64 96 35	42	48	0.00		
<a href="#">19</a>	139	680	7.1	360	31.0	52 61 45	56 75 41	54 76 37	36	44	0.00		
<a href="#">20</a>	140	716	8.0	3	32.0	52 59 46	56 73 44	53 70 37	35	43	0.00		
<a href="#">21</a>	141	710	5.8	30	33.0	54 63 45	58 77 42	58 81 39	39	46	0.00		
<a href="#">22</a>	142	682	3.7	37	20.0	56 73 41	60 88 37	60 95 31	41	48	0.00		
<a href="#">23</a>	143	707	3.0	10	21.0	58 76 39	60 90 35	57 93 25	39	47	0.00		
<a href="#">24</a>	144	695	2.8	243	18.0	61 79 41	66 96 37	63 95 32	46	52	0.00		
<a href="#">25</a>	145	678	3.7	355	20.0	59 70 47	63 85 44	67 92 46	47	52	0.00		
<a href="#">26</a>	146	705	4.5	58	16.0	60 78 44	64 93 40	63 92 37	46	52	0.00		
<a href="#">27</a>	147	597	2.8	331	16.0	60 78 40	65 91 35	69 97 40	48	53	0.00		
<a href="#">28</a>	148	711	4.6	58	16.0	63 81 49	67 95 46	58 84 33	46	53	0.00		
<a href="#">29</a>	149	711	4.2	23	20.0	60 79 44	64 93 41	64 94 29	45	51	0.00		
<a href="#">30</a>	150	714	3.9	53	20.0	64 84 43	68 98 39	59 96 26	46	53	0.00		
<a href="#">31</a>	151	705	2.8	5	18.0	71 98 46	74 109 41	53 92 19	48	56	0.00		

MONTHLY STATISTICS

	Total Solar Rad. ly.	Wind Ave. V. mph	Dir. Max. Deg	Air Temperature Mean Deg. Fahrenheit	Max Min Fahrenheit	Fuel Temperature Mean Deg. Fahrenheit	Max Min Fahrenheit	Humidity Mean Percent	Max Min Percent	Dew Point Deg. Fahrenheit	Wet Bulb Fahrenheit	Total Precip. inches
Total	20865											0.00
Ave.	673	4.2	29	21.6	59.0 75.6 44.6	62.7 89.8 41.0	62 90 34	44	50			
Max.	716	8.0		34.0	71 98 50	74 109 49	73 97 55	48	56	0.00		
Min.	513	2.3		15.0	52 59 39	56 73 35	53 70 19	35	43	0.00		

Data are subject to further review and editing. Please refer any questions to the Western Regional Climate Center.

° 1 ly = 1 cal/cm<sup>2</sup> = 4.1855 J/cm<sup>2</sup> = 3.6855 BTU/ft<sup>2</sup> = .01163 KW-hr/m<sup>2</sup>


**Station Summary**


## Eel River Camp California

Monthly Summary for

**June, 2021**

Day of Month	Day of Year	Total Solar Rad. ly.	Wind Ave. V. mph	Dir. Deg	Max. mph	Air Temperature Mean Deg. Fahrenheit	Max Fahrenheit	Min Fahrenheit	Fuel Temperature Mean Deg. Fahrenheit	Max Fahrenheit	Min Fahrenheit	Humidity Mean Percent	Max Percent	Min Percent	Dew Point Deg. Fahrenheit	Wet Bulb Fahrenheit	Total Precip. inches
<a href="#">1</a>	152	705	2.2	44	19.0	73	102	50	77	117	46	53	90	18	51	58	0.00
<a href="#">2</a>	153	712	3.5	18	18.0	71	90	50	74	105	46	55	93	26	51	58	0.00
<a href="#">3</a>	154	717	4.2	26	25.0	67	88	48	70	102	43	60	95	20	49	56	0.00
<a href="#">4</a>	155	724	4.0	37	25.0	66	86	49	69	100	45	54	96	15	44	53	0.00
<a href="#">5</a>	156	726	7.4	26	26.0	62	73	51	66	87	49	53	78	36	44	51	0.00
<a href="#">6</a>	157	716	6.1	19	27.0	58	69	49	63	84	47	57	80	30	41	49	0.00
<a href="#">7</a>	158	698	4.1	342	21.0	57	68	45	60	84	41	58	94	33	40	48	0.00
<a href="#">8</a>	159	605	2.8	227	17.0	54	67	39	57	87	33	64	96	35	40	46	0.00
<a href="#">9</a>	160	554	2.5	292	20.0	52	67	36	54	83	26	69	98	34	40	45	0.00
<a href="#">10</a>	161	663	2.5	236	17.0	55	72	37	59	89	28	62	97	26	40	46	0.00
<a href="#">11</a>	162	239	2.3	244	20.0	56	67	45	58	75	42	77	97	46	48	52	0.32
<a href="#">12</a>	163	622	3.2	232	23.0	66	77	57	71	92	57	79	98	55	59	61	0.00
<a href="#">13</a>	164	402	3.2	228	21.0	66	76	59	70	87	60	77	96	52	58	61	0.00
<a href="#">14</a>	165	598	3.1	250	15.0	64	75	48	68	92	41	68	96	35	52	56	0.00
<a href="#">15</a>	166	728	3.7	340	21.0	61	77	46	66	93	39	63	98	29	46	52	0.00
<a href="#">16</a>	167	744	3.8	25	19.0	66	87	46	70	101	43	59	96	22	48	55	0.00
<a href="#">17</a>	168	742	4.6	38	23.0	66	85	48	70	97	44	62	97	28	50	56	0.00
<a href="#">18</a>	169	734	4.1	44	21.0	66	87	48	70	103	46	62	95	29	50	56	0.00
<a href="#">19</a>	170	724	1.7	247	15.0	72	101	47	76	117	43	59	97	19	52	59	0.00
<a href="#">20</a>	171	728	2.0	225	15.0	74	96	54	76	112	47	53	96	18	50	59	0.00
<a href="#">21</a>	172	716	2.7	235	13.0	65	82	49	68	97	43	64	96	35	50	56	0.00
<a href="#">22</a>	173	679	2.9	220	15.0	62	76	49	67	91	44	70	97	44	51	55	0.00
<a href="#">23</a>	174	697	2.9	127	15.0	66	84	47	70	100	41	66	98	36	52	57	0.00
<a href="#">24</a>	175	691	2.9	89	16.0	70	93	55	76	108	54	61	89	30	54	60	0.00
<a href="#">25</a>	176	694	2.1	75	14.0	73	95	54	77	112	51	59	94	30	55	61	0.00
<a href="#">26</a>	177	707	2.1	28	18.0	77	101	54	80	117	50	55	95	22	55	62	0.00
<a href="#">27</a>	178			16.0		96	57		112	53		89	24				
<a href="#">28</a>	179	710	2.4	231	20.0	71	89	54	75	107	50	62	93	31	55	60	0.00
<a href="#">29</a>	180	702	3.7	24	22.0	73	95	53	77	110	48	59	97	23	54	61	0.00
<a href="#">30</a>	181	694	4.9	53	20.0	69	87	55	74	101	51	67	95	38	56	60	0.00

### MONTHLY STATISTICS

	Total Solar Rad. ly.	Wind Ave. V. mph	Dir. Deg	Max. mph	Air Temperature Mean Deg. Fahrenheit	Max Fahrenheit	Min Fahrenheit	Fuel Temperature Mean Deg. Fahrenheit	Max Fahrenheit	Min Fahrenheit	Humidity Mean Percent	Max Percent	Min Percent	Dew Point Deg. Fahrenheit	Wet Bulb Fahrenheit	Total Precip. inches
Total	19373															0.32
Ave.	668	3.4	332	19.2	65.5	83.6	49.3	69.2	98.7	45.0	62	94	31	50	55	
Max.	744	7.4		27.0	77	102	59	80	117	60	79	98	55	59	62	0.32
Min.	239	1.7		13.0	52	67	36	54	75	26	53	78	15	40	45	0.00

Data are subject to further review and editing. Please refer any questions to the Western Regional Climate Center.

° 1 ly = 1 cal/cm<sup>2</sup> = 4.1855 J/cm<sup>2</sup> = 3.6855 BTU/ft<sup>2</sup> = .01163 KW-hr/m<sup>2</sup>

 [Return to previous form.](#)

 [Return to WRCC Home Page.](#)





## Eel River Camp California

Monthly Summary for

**July, 2021**

Day of Month	Day of Year	Total Solar Rad. ly.	Wind Ave. V. mph	Dir. Deg	Max. mph	Air Temperature Mean Deg. Fahrenheit	Max Fahrenheit	Min Fahrenheit	Fuel Temperature Mean Deg. Fahrenheit	Max Fahrenheit	Min Fahrenheit	Humidity Mean Percent	Max Percent	Min Percent	Dew Point Deg. Fahrenheit	Wet Bulb Fahrenheit	Total Precip. inches
<a href="#">1</a>	182	681	6.2	61	18.0	69	87	59	74	102	59	64	82	34	55	60	0.00
<a href="#">2</a>	183	702	3.1	80	15.0	74	97	55	79	114	53	60	94	15	55	61	0.00
<a href="#">3</a>	184	717	2.9	97	15.0	75	98	53	79	112	49	57	97	13	54	61	0.00
<a href="#">4</a>	185	700	2.9	95	15.0	73	94	55	78	111	53	60	90	32	56	61	0.00
<a href="#">5</a>	186	698	2.4	86	14.0	73	98	53	78	113	49	56	94	22	53	59	0.00
<a href="#">6</a>	187	709	3.4	66	18.0	68	92	52	73	110	49	63	92	26	52	57	0.00
<a href="#">7</a>	188	704	5.0	57	20.0	65	81	50	69	93	45	65	92	38	51	56	0.00
<a href="#">8</a>	189	718	3.3	43	17.0	66	88	48	71	103	45	62	96	28	50	56	0.00
<a href="#">9</a>	190	707	3.4	70	17.0	70	96	48	75	111	45	56	92	20	50	57	0.00
<a href="#">10</a>	191	702	3.5	43	16.0	69	95	49	73	109	45	61	94	22	51	57	0.00
<a href="#">11</a>	192	716	3.3	48	19.0	68	92	51	73	107	46	61	92	25	51	57	0.00
<a href="#">12</a>	193	713	4.0	41	20.0	65	87	47	69	102	43	65	96	32	50	55	0.00
<a href="#">13</a>	194	700	3.8	60	18.0	66	90	47	71	103	43	63	96	27	50	56	0.00
<a href="#">14</a>	195	684	3.2	41	19.0	65	87	48	70	102	46	65	95	31	51	56	0.00
<a href="#">15</a>	196	696	4.1	70	18.0	64	83	54	69	98	53	64	84	37	50	55	0.00
<a href="#">16</a>	197	690	4.3	41	17.0	65	82	49	70	96	46	61	94	32	50	55	0.00
<a href="#">17</a>	198	687	4.3	23	20.0	67	86	50	71	102	48	61	94	29	51	56	0.00
<a href="#">18</a>	199	702	3.3	21	22.0	69	95	48	72	106	44	61	95	24	51	57	0.00
<a href="#">19</a>	200	640	3.9	25	20.0	68	89	51	70	101	48	61	99	28	52	57	0.00
<a href="#">20</a>	201	713	3.9	346	24.0	66	86	47	68	96	42	63	100	24	50	56	0.00
<a href="#">21</a>	202				21.0		81	55		93	52		88	35			
<a href="#">22</a>	203				19.0		87	51		99	47		89	22			
<a href="#">23</a>	204	692	3.4	19	20.0	71	94	47	72	103	43	54	100	20	48	57	0.00
<a href="#">24</a>	205	654	2.5	45	19.0	73	101	50	75	112	45	55	93	20	51	59	0.00
<a href="#">25</a>	206	604	2.1	127	13.0	74	100	51	76	111	47	57	98	23	54	60	0.00
<a href="#">26</a>	207	587	2.6	134	14.0	73	94	54	76	105	51	54	90	28	54	60	0.00
<a href="#">27</a>	208	308	1.4	260	11.0	69	87	59	70	96	55	72	100	36	58	61	0.02
<a href="#">28</a>	209	648	1.9	247	16.0	77	102	57	80	114	54	57	100	15	55	62	0.00
<a href="#">29</a>	210	663	2.0	244	15.0	80	105	58	82	117	54	46	88	12	52	62	0.00
<a href="#">30</a>	211	670	2.2	257	16.0	81	107	60	83	118	55	44	79	8	50	61	0.00
<a href="#">31</a>	212	652	1.9	208	19.0	74	103	54	75	116	49	55	93	17	53	60	0.00

MONTHLY STATISTICS

	Total Solar Rad. ly.	Wind Ave. V. mph	Dir. Deg	Max. mph	Air Temperature Mean Deg. Fahrenheit	Max Fahrenheit	Min Fahrenheit	Fuel Temperature Mean Deg. Fahrenheit	Max Fahrenheit	Min Fahrenheit	Humidity Mean Percent	Max Percent	Min Percent	Dew Point Deg. Fahrenheit	Wet Bulb Fahrenheit	Total Precip. inches
Total	19456															0.02
Ave.	671	3.2	52	17.6	70.3	92.4	51.9	73.8	105.6	48.5	59	93	25	52	58	
Max.	718	6.2		24.0	81	107	60	83	118	59	72	100	38	58	62	0.02
Min.	308	1.4		11.0	64	81	47	68	93	42	44	79	8	48	55	0.00

Data are subject to further review and editing. Please refer any questions to the Western Regional Climate Center.

° 1 ly = 1 cal/cm<sup>2</sup> = 4.1855 J/cm<sup>2</sup> = 3.6855 BTU/ft<sup>2</sup> = .01163 KW-hr/m<sup>2</sup>

Station Summary

## Eel River Camp California

Monthly Summary for

**August, 2021**

Day of Month	Day of Year	Total Solar Rad. ly.	Wind Ave. V. mph	Dir. Deg	Max. mph	Air Temperature Mean Deg. Fahrenheit	Max Fahrenheit	Min Fahrenheit	Fuel Temperature Mean Deg. Fahrenheit	Max Fahrenheit	Min Fahrenheit	Humidity Mean Percent	Max Percent	Min Percent	Dew Point Deg. Fahrenheit	Wet Bulb Fahrenheit	Total Precip. inches
<a href="#">1</a>	213	660	2.7	217	18.0	72	94	52	73	104	47	52	98	18	49	58	0.00
<a href="#">2</a>	214	678	2.2	249	15.0	68	92	50	70	105	45	51	97	9	43	54	0.00
<a href="#">3</a>	215	611	1.8	262	14.0	72	100	48	72	110	44	54	99	6	47	57	0.00
<a href="#">4</a>	216	674	2.4	245	16.0	71	97	49	72	108	43	52	100	9	45	56	0.00
<a href="#">5</a>	217	561	2.9	92	21.0	65	82	47	66	92	42	69	97	41	53	57	0.00
<a href="#">6</a>	218				19.0		90	54		103	51		100	24			
<a href="#">7</a>	219	516	3.0	36	16.0	72	91	57	74	101	54	68	99	34	59	63	0.00
<a href="#">8</a>	220	631	5.0	41	17.0	71	88	54	73	99	50	62	85	33	55	61	0.00
<a href="#">9</a>	221	616	2.4	248	17.0	73	97	50	74	109	46	54	97	16	51	59	0.00
<a href="#">10</a>	222	591	2.0	287	15.0	78	102	54	79	113	49	49	95	15	51	61	0.00
<a href="#">11</a>	223	545	1.6	341	16.0	78	104	56	78	115	52	47	84	12	50	60	0.00
<a href="#">12</a>	224	429	1.5	40	14.0	75	99	56	76	108	51	49	83	19	51	59	0.00
<a href="#">13</a>	225	304	1.4	266	13.0	70	90	59	71	98	54	57	80	28	53	59	0.00
<a href="#">14</a>	226	386	2.1	72	15.0	71	91	55	72	100	52	61	88	31	55	60	0.00
<a href="#">15</a>	227	525	2.8	15	20.0	71	94	54	73	104	51	66	96	32	57	61	0.00
<a href="#">16</a>	228	618	5.1	24	20.0	68	87	54	70	99	50	67	100	30	54	59	0.00
<a href="#">17</a>	229	602	6.0	39	27.0	66	77	53	69	88	49	64	89	36	52	57	0.00
<a href="#">18</a>	230	429	3.2	37	19.0	63	79	48	63	87	42	66	100	35	50	55	0.00
<a href="#">19</a>	231	504	3.1	31	17.0	67	89	48	68	99	44	64	100	21	51	57	0.00
<a href="#">20</a>	232	473	3.0	335	20.0	66	84	52	67	92	49	68	100	32	53	57	0.00
<a href="#">21</a>	233	592	4.0	354	21.0	65	82	49	66	94	45	65	100	28	50	55	0.00
<a href="#">22</a>	234	507	3.0	21	15.0	64	87	48	66	99	46	68	99	33	51	56	0.00
<a href="#">23</a>	235	555	2.5	295	14.0	64	91	44	66	104	40	62	100	17	46	53	0.00
<a href="#">24</a>	236	565	2.5	15	17.0	64	88	44	65	100	38	60	100	22	46	53	0.00
<a href="#">25</a>	237	570	3.4	342	17.0	64	86	45	66	98	42	62	100	17	46	53	0.00
<a href="#">26</a>	238	567	3.8	33	23.0	67	86	50	68	97	45	64	100	23	51	57	0.00
<a href="#">27</a>	239	567	3.8	20	21.0	68	87	53	69	96	49	64	100	30	52	58	0.00
<a href="#">28</a>	240	494	1.5	340	14.0	71	102	47	71	112	42	57	100	16	49	57	0.00
<a href="#">29</a>	241	484	2.7	38	19.0	69	96	51	69	107	46	61	96	21	50	57	0.00
<a href="#">30</a>	242	573	4.1	10	26.0	66	89	46	67	99	43	59	100	17	47	54	0.00
<a href="#">31</a>	243	552	3.2	12	21.0	63	85	46	64	96	40	58	95	17	45	52	0.00

MONTHLY STATISTICS

	Total Solar Rad. ly.	Wind Ave. V. mph	Dir. Deg	Max. mph	Air Temperature Mean Deg. Fahrenheit	Max Fahrenheit	Min Fahrenheit	Fuel Temperature Mean Deg. Fahrenheit	Max Fahrenheit	Min Fahrenheit	Humidity Mean Percent	Max Percent	Min Percent	Dew Point Deg. Fahrenheit	Wet Bulb Fahrenheit	Total Precip. inches
Total	16383															0.00
Ave.	546	3.0	7	18.0	68.7	90.5	50.7	69.9	101.2	46.5	60	96	23	50	57	
Max.	678	6.0		27.0	78	104	59	79	115	54	69	100	41	59	63	0.00
Min.	304	1.4		13.0	63	77	44	63	87	38	47	80	6	43	52	0.00

Data are subject to further review and editing. Please refer any questions to the Western Regional Climate Center.

° 1 ly = 1 cal/cm<sup>2</sup> = 4.1855 J/cm<sup>2</sup> = 3.6855 BTU/ft<sup>2</sup> = .01163 KW-hr/m<sup>2</sup>


**Station Summary**

## Eel River Camp California

Monthly Summary for

**September, 2021**

Day of Month	Day of Year	Total Solar Rad. ly.	Wind Ave. V. mph	Wind Dir. Deg	Air Temperature Max. Fahrenheit	Air Temperature Mean Deg. Fahrenheit	Air Temperature Min. Fahrenheit	Fuel Temperature Max. Fahrenheit	Fuel Temperature Mean Deg. Fahrenheit	Fuel Temperature Min. Fahrenheit	Humidity Mean Percent	Humidity Max Percent	Humidity Min Percent	Dew Point Deg. Fahrenheit	Wet Bulb Deg. Fahrenheit	Total Precip. inches	
<u>1</u>	244	455	2.0	12	13.0	61	87	43	62	96	38	64	100	25	46	52	0.00
<u>2</u>	245	490	1.7	345	15.0	62	87	41	62	98	36	63	100	25	45	52	0.00
<u>3</u>	246	469	1.8	268	14.0	65	90	44	65	100	39	60	100	22	47	54	0.00
<u>4</u>	247	471	2.0	335	17.0	66	93	45	66	102	40	58	100	19	47	54	0.00
<u>5</u>	248	497	2.3	343	15.0	70	97	48	71	109	43	61	100	17	51	58	0.00
<u>6</u>	249	501	1.6	262	15.0	72	100	51	72	112	46	55	100	10	47	57	0.00
<u>7</u>	250	459	2.0	284	18.0	73	99	49	74	111	44	47	90	7	46	57	0.00
<u>8</u>	251	491	2.2	14	16.0	72	98	54	74	108	50	55	90	19	52	59	0.00
<u>9</u>	252	356	3.3	28	17.0	68	83	54	69	94	50	63	87	36	54	59	0.00
<u>10</u>	253	513	3.9	36	18.0	66	83	54	68	93	52	68	100	31	53	58	0.00
<u>11</u>	254	506	3.4	41	19.0	66	89	48	68	100	45	65	100	28	51	56	0.00
<u>12</u>	255	502	3.4	19	21.0	65	90	48	67	100	44	65	100	17	49	55	0.00
<u>13</u>	256	477	3.1	6	19.0	63	86	44	63	94	40	66	100	29	49	54	0.00
<u>14</u>	257	455	1.5	344	14.0	68	100	45	67	110	40	58	100	15	47	55	0.00
<u>15</u>	258	498	2.8	346	20.0	65	93	45	66	103	40	61	98	20	47	54	0.00
<u>16</u>	259	445	2.8	338	18.0	61	84	44	62	92	40	60	100	17	43	51	0.00
<u>17</u>	260	446	2.0	217	16.0	62	89	44	63	99	39	60	96	23	45	51	0.00
<u>18</u>	261	97	0.9	238	8.0	59	64	49	59	64	45	91	100	74	56	57	0.80
<u>19</u>	262	443	2.8	349	18.0	62	75	52	64	85	51	75	100	37	52	56	0.01
<u>20</u>	263	475	2.4	338	19.0	63	88	46	64	96	43	68	100	22	49	54	0.00
<u>21</u>	264	449	1.4	269	17.0	65	94	45	65	105	41	65	100	14	47	54	0.00
<u>22</u>	265	447	2.4	359	20.0	66	91	46	66	102	42	61	100	15	47	54	0.00
<u>23</u>	266	453	1.4	250	14.0	68	98	47	68	107	43	63	100	14	49	56	0.00
<u>24</u>	267	437	1.3	244	13.0	67	97	47	67	108	43	61	100	14	47	55	0.00
<u>25</u>	268	448	2.6	227	14.0	61	80	45	62	91	40	72	100	34	50	54	0.00
<u>26</u>	269	393	1.9	210	13.0	60	74	52	62	85	49	76	96	45	51	55	0.00
<u>27</u>	270	119	1.4	220	15.0	57	65	51	57	66	51	95	100	86	56	56	0.14
<u>28</u>	271	408	3.3	328	25.0	56	70	46	58	79	43	77	100	39	47	51	0.00
<u>29</u>	272	429	2.8	357	17.0	58	76	44	59	86	41	69	100	33	46	50	0.00
<u>30</u>	273	420	3.3	41	19.0	62	82	42	63	92	38	71	100	28	50	54	0.00

### MONTHLY STATISTICS

	Total Solar Rad. ly.	Wind Ave. V. mph	Wind Dir. Deg	Air Temperature Max. Fahrenheit	Air Temperature Mean Deg. Fahrenheit	Air Temperature Min. Fahrenheit	Fuel Temperature Max. Fahrenheit	Fuel Temperature Mean Deg. Fahrenheit	Fuel Temperature Min. Fahrenheit	Humidity Mean Percent	Humidity Max Percent	Humidity Min Percent	Dew Point Deg. Fahrenheit	Wet Bulb Deg. Fahrenheit	Total Precip. inches
Total	13052														0.95
Ave.	435	2.3	318	16.6	64.4	86.7	47.1	65.1	96.2	43.2	66	99	27	49	55
Max.	513	3.9		25.0	73	100	54	74	112	52	95	100	86	56	59
Min.	97	0.9		8.0	56	64	41	57	64	36	47	87	7	43	50

Data are subject to further review and editing. Please refer any questions to the Western Regional Climate Center.

° 1 ly = 1 cal/cm<sup>2</sup> = 4.1855 J/cm<sup>2</sup> = 3.6855 BTU/ft<sup>2</sup> = .01163 KW-hr/m<sup>2</sup>