



COUNTY OF HUMBOLDT

AGENDA ITEM NO.
C-20

For the meeting of: April 28, 2015

Date: April 6, 2015

To: Board of Supervisors

From: **(B)** Thomas K. Mattson, Director of Public Works

Subject: **HUMBOLDT COUNTY RURAL TRANSPORTATION & ACCESS PARTNERSHIP (RTAP) APPLICATION APPROVAL**

RECOMMENDATION(S): That the Board of Supervisors:

1. Accepts the RTAP application from Dows Prairie Elementary School and approves the assistance of the Department of Public Works, staff and equipment, in connecting the gap between two existing concrete sidewalks on Dows Prairie Road in McKinleyville with a paved pathway.
2. Accepts the RTAP application from Hospice of Humboldt and approves the assistance of the Department of Public Works, staff and equipment, with an overlay of asphalt concrete on Freese Avenue in Eureka to complete the Freese Avenue Resurfacing and Water Main Upgrade Project.
3. Approves the use of county forces to perform force account work, as allowed under Public Contract Code Section 22031, for this project

Prepared by: Art Reeve

CAO Approval: Cheryl D. Hingham

REVIEW:	Auditor <u>AL</u>	County Counsel <u>Sm</u>	Personnel _____	Risk Manager _____	Other _____
---------	-------------------	--------------------------	-----------------	--------------------	-------------

TYPE OF ITEM:

Consent

Departmental

Public Hearing

Other _____

BOARD OF SUPERVISORS, COUNTY OF HUMBOLDT

Upon motion of Supervisor Lovellace

Seconded by Supervisor Bass

And unanimously carried by those members present,

The Board hereby adopts the recommended action contained in this report.

PREVIOUS ACTION/REFERRAL:

Board Order No. _____

Dated: April 28, 2015
Kathy Hayes, Clerk of the Board

Meeting of: _____

By: Ann Huntwell

SOURCE OF FUNDING:

Road Fund

DISCUSSION:

The RTAP program was created to help rural communities overcome transportation challenges and improve access to goods, services, employment, education and recreation via all modes of surface transportation. RTAP is a matching program with the Humboldt County Department of Public Works to help address unfunded transportation needs through community partnerships. Any individual or group in Humboldt County; residents, property owners, Tribes, Community Service Districts or non-profit organizations, may apply under this program. The two applications before you have both met the eligibility requirements for the RTAP program.

The Dows Prairie School Pathway Project is being submitted by the Dow Prairie Elementary School. The goal of this project is to pave a pathway approximately four (4) feet wide and five hundred and fifteen (515) feet long, connecting Dows Prairie Elementary School to the Prairie Hawke neighborhood. The school has in-kind donations for purchasing the materials estimated to complete the project and is requesting only labor and equipment from the Department of Public Works to construct the pathway.

The Freese Avenue Resurfacing and Water Main Upgrade Project is being submitted by Hospice of Humboldt. The goal of this project is to improve the roadway, municipal water service and fire protection capabilities for the Freese Avenue neighborhood. In July of 2015, Humboldt Community Service District (HCSD) will be replacing the existing five hundred (500) feet of six (6) inch steel and four hundred (400) feet of six (6) inch asbestos line concrete water main with eight (8) inch polyvinyl chloride (PVC) pipe located within the Freese Avenue right-of-way. After the replacement of the water main is completed, HCSD and Hospice of Humboldt would like to schedule the road resurfacing with the Department of Public Works. HCSD and Hospice of Humboldt will be responsible for purchasing and delivering the asphalt concrete to Freese Avenue and have requested the County Road Maintenance Crew apply the material on the road surface with county owned equipment and manpower.

FINANCIAL IMPACT:

Each of these projects would require approximately one day's work for a County Road Crew and equipment. The Dows Prairie School Pathway Project will occur during the 2014-2015 fiscal year and wages for the County Road Maintenance Workers were accounted for in the 2014-2015 budget. The community in-kind costs are estimated at \$5,012.68 and the county's estimated value of labor and equipment is \$7,354.30.

The Freese Avenue Resurfacing and Water Main Upgrade Project will occur in the 2015-2016 fiscal year and the wages for the County Road Maintenance Workers have been proposed in the 2015-2016 budget. The Hospice and HCSD's estimated costs are \$137,486.25 and the county's estimated value of labor and equipment is \$8,486.02.

Both of these projects conform to the Board of Supervisors' Core Role of providing for and maintaining infrastructure and building inter-jurisdictional and regional cooperation as identified in the Board's Strategic Framework.

OTHER AGENCY INVOLVEMENT:

Dows Prairie Elementary School – Dows Prairie School Pathway Project
Hospice of Humboldt and Humboldt Community Service District – Freese Avenue Resurfacing
and Water Main Upgrade Project

ALTERNATIVES TO STAFF RECOMMENDATIONS:

1. Not to accept the applications of either RTAP applicant.
2. Accept only one of the two RTAP applicants.

ATTACHMENTS:

Dows Prairie Elementary School's RTAP application
Hospice of Humboldt's RTAP application

RTAP Project Proposal

PROJECT INFORMATION

Project Name: Dows Prairie School Pathway

Project Location: On the west side of Dows Prairie Road adjacent, just south of Dows Prairie School parking lot

APPLICANT INFO

Name: Kevin Scheffler, principal, Dows Prairie Elementary School

Contact Info: 707-839-1558, kscheffler@nohum.k12.ca.us

Date Application Submitted: Tuesday, March 24 2015

Attach original application form to this package.

Project Qualification

A. Project location – County ROW

B. Funding – Cash Match

A. Does the proposed project exist within County-owned right-of-way (ROW)? If it requires some or total use of other ROW, is/are the landowner/s supportive and willing to donate/sell ROW?

Note: if the project is not within County ROW and landowner/s are not willing, the project cannot proceed. (10 points)

This project proposes paving an existing sidewalk gap (approximately 515 linear feet) on Dows Prairie Road between the Dows Prairie Elementary School to the Prairie Hawke neighborhood south of the school. The project is proposed completely within the County right-of-way of Dows Prairie Road adjacent to parcel APN 51120251. We are proposing an informal, paved asphalt path (3-4 feet wide) —not a Class I bikeway as defined by Caltrans. The path will provide safe walking and biking connections while fitting in with the surrounding neighborhood aesthetic.

B. Does the project have the in-kind donations or cash match necessary to complete it and bring project funding to 100%? If the match along with County support (staff/equipment time) is high but not complete, if awarded, the project may either be suspended until enough funding is available or used to apply for grant funding. **Note: If the project match is not addressed or insufficient, the project cannot proceed.** (10 points)

The Dows Prairie Elementary School administration has led the solicitation for in-kind donation of construction materials/cash match from the school community. This project will require asphalt for paving and potentially other construction materials. Several school parents have stepped up to offer in-kind construction materials or a cash donation to complete the path. In particular school parents with ties to local businesses have offered support including from Hooven & Co. and Mercer-Fraser Company. The school is confident that in-kind donations and matching funds from the school community will meet the \$5,012.68 in materials estimated by County Public Works to complete the project.

DETAILED PROJECT SCORING

1. Does the project have a high level of community/ neighborhood support? Indicate the level of support by immediately adjacent and other community landowners/businesses and attach supporting documentation. (Note question #6 is about partnerships and collaboration.) (10 cumulative points)

This project was a priority that arose from the Dows Prairie Walkability Assessment in 2012 and has strong support from the Dows Prairie Elementary School community, McKinleyville Schools Parent Teacher Organization and nearby neighbors. In addition, the Countywide Safe Routes to School Task Force has worked collaboratively with County Public Works and Dows Prairie School to refine the project scope, support the project and seek matching funds.

2. Does the project serve a community with limited transportation options? Low-income and/or carless households? Disabled? Isolated population? Youth and/or seniors? Minority population? (10 cumulative points)

This formal pedestrian pathway will make it safer and easier for children (and others) to walk to and from school. The pathway will better connect the surrounding neighborhoods and improve access to the school, bus stops and a nearby preschool, thereby encouraging more walking trips. The Dows Prairie area of McKinleyville has limited pedestrian infrastructure and there are currently no sidewalks from the school that connect to neighborhoods. This project will provide a much needed connection for kids walking or biking to Dows Prairie school from neighborhoods to the south.

3. Does the project have a documented safety or access need? Has the project sponsor performed a detailed assessment to determine specific needs? Can the project sponsor provide quantitative and qualitative measures of need? (10 points)

Dows Prairie School teachers, staff, parents, and students have seen the need for safe routes to their school for some time. The sidewalk in front of the school ends at each end of the parking lot; therefore, pedestrians, whether coming from the south or north, must walk in the roadway shoulder on the way to school. In September 2012, the school participated in a Walkability Assessment (a part of HCAOG's Safe Routes to School Prioritization Tool Project), which confirmed the need for a pathway, separated from vehicles, adjacent to the school. The Walkability Assessment found that roadway shoulder south of the school was uneven and unpaved, "the overgrowth of brush contributes to poor sight visibility and forces pedestrians to walk further out into the street," and that the crosswalk south of the school leads to a ditch on the eastern side (page 8). The report lists the goal of "establishing alternate trails/entrances to Dows Prairie Elementary School" (page 3). Walkability Assessment Participants included parents, neighbors, the school principal, California Highway Patrol, Arcata Fire District Chief, Humboldt County Public Works Department, HCOE's California Joint Powers Authority Risk Manager, Caltrans staff, NRS/RCAA staff, and County Public Health. See the attached Walkability Assessment Outcomes report for more details.

4. Does the project design clearly provide outcomes that meet the needs identified in the assessment process? (10 points)

The proposed project directly addresses the goal of building safer, more connected routes to schools—in this case where one school campus serves students from three schools. This project supports the community and regional goal of having more “complete streets,” which give all users (pedestrians, motorists, bicyclists, children, seniors, wheelchair users, etc.) more travel options. This project will help achieve the community goals of encouraging more physical activity (walking and bicycling); reducing driving trips and thereby helping air quality; helping create more equitable transportation infrastructure in our smaller, more rural neighborhoods; enhancing walkability to increase property values; and reducing traffic congestion in the school zone thereby increasing safety. The project is also an opportunity for many organizations and people in the community to collaborate on a small-scale, straight-forward, affordable project that can be finished quickly and show results to, and benefits for, the whole community.

5. Does the project complement relevant planning documents and community goals (e.g. transportation, land use, economic development, restoration) in the project area? Is the project specifically listed as a priority or identified in existing plan? If not listed in a plan, does the project clearly support documented community goals/objectives (if so, which)? (10 points)

The proposed path project complements Humboldt County’s Regional Transportation Plan VROOM as policy CS-12 pledges support and collaboration to advance Safe Routes to School programs. In addition, Section 5.2.3.3 of the 2008 Humboldt County Regional Pedestrian Plan recommends the installation of sidewalks or pathways within a one mile radius of schools to help students who walk to and from school. The McKinleyville Community Plan also includes supportive policies including that “priority (from the available funds provided for McKinleyville) shall be given to circulation projects which enhance safe pedestrian and bicycle access to McKinleyville’s schools.”

6. Does the project substantively involve community partners? Are all relevant stakeholders engaged in the process? Is there documentation of collaboration throughout the planning and design? (10 points)

This project has involved a diversity of engaged project partners. In particular the Countywide Safe Routes to School Task Force has supported the school in pursuing the project and identifying matching materials needs. Partners have included California Highway Patrol, Humboldt County DHHS Public Health Branch, Redwood Community Action Agency, Humboldt County Association of Governments and BikesThere.com. The McKinleyville Parent Teacher Organization also supports the project and fundraising for the path within the Dows Prairie School community. The Walkability Assessment report and attached maps detail the input in planning the pathway project.

7. Does the project utilize proven Federal Highway Administration (FHWA) countermeasures to address safety? Note which measures are addressed (see RTAP Guide for references), listed below. (10 points)

- **Road Safety Audits** (A Walkability Audit in 2012 led to the identification of this project.)

• Rumble Strips and Rumble Stripes • Median Barriers • Safety Edge • Roundabouts • Left and Right Turn Lanes at Stop-Controlled Intersections • Yellow Change Intervals • Medians and Pedestrian Refuge Areas in Urban and Suburban Areas • **Walkways**

8. Does the project improve/address safety and access for multiple road users? Does the project build 'complete streets' with safe access for motorists, pedestrians (including transit users and the disabled), and bicyclists? (10 points)

The Dows Prairie School Pathway project will provide a "complete street" along Dows Prairie Road adjacent to the Dows Prairie School. Currently there is no specific infrastructure for pedestrians and bicyclists to access the school. Students walking from the school have to walk in the roadway to access neighborhoods to the south. Dows Prairie School also serves as a central school bus stop for students traveling to or from other McKinleyville schools. Increasing safety for pedestrians will further encourage students to walk, rather than be driven, to school and will also encourage more residents to walk as exercise.

9. Does the project enhance environmental & human health objectives? Note which categories below are addressed and how they are addressed. (10 points)

Environmental & Human Health Outcome Categories

1. Enhance Threatened and Endangered species habitat or migration
2. Reduce vehicle miles traveled and subsequent emissions
3. Restore or improve wetland
4. Increases options for physical activity
5. Reduce erosion and/or sedimentation potential
6. Provide better stormwater management

The proposed path will increase opportunities for students and families to walk or bike to Dows Prairie school, significantly increasing the options for physical activity and potentially reducing the need for families to drive to the school. Previous County Public Works cleared vegetation from the grassy right-of-way in the location of the project with the intention of creating a place for pedestrians to walk off the roadway. However, this grassy area has become eroded and a paved asphalt path would provide a much more safe, sustainable walking area.

Answer **either** 10a or 10b to indicate if the proposed project provides access to a key destination or a connecting corridor:

10a. (Destination Access) Does the project improve access to key commercial, social or recreational services? For example: Will the project provide a new route or safe crossing to a shopping area, school, park or critical medical facility? Is the project within the ½ mile to 1 mile of important destinations in your community? (10 cumulative points)

This project will improve access to the Dows Prairie Elementary School which also serves as a key hub for students getting to other schools in the McKinleyville area. Dows Prairie School is located in a rural community and serves nearby residential neighborhoods as well as other areas of McKinleyville. In addition to elementary students walking to Dows Prairie School, older

students also walk or are driven to the campus to catch buses to McKinleyville Middle School and Northern Humboldt Unified High Schools. The path will also improve access to the Dows Prairie Grange and a nearby preschool.

10b. (Connecting Corridor) Does the project improve access or safety along a key connecting corridor between communities or services? Does the project provide a critical connection within a community or to other communities/services? Does the project remove barriers to access along a key corridor? (10 cumulative points)

CONTRACT NO.
CO. RT. P.M. 0.85

DATE PERFORMED:
DATE OF REPORT: 1/3/2015

WORK PERFORMED BY: Mckinleyville road crew

Work description. 500'x 4' A.C walking path

EQUIPMENT		HOURS	RATE	TOTAL	LABOR		HOURS	HOURLY RATE	EXTENDED AMOUNTS
10 yard dump truck 52731		20	\$40.38	\$ 807.60					\$ -
backhoe 43873		20	\$108.17	\$ 2,163.40		Road Supervisor	10.0	\$46.34	\$ 463.40
roller 46825		10	\$96.31	\$ 963.10		Road Maintenance Wk III	20.0	\$37.96	\$ 759.20
EQUIPMENT SUBTOTAL				\$ 3,934.10		Road Maintenance Wk III	20.0	\$37.96	\$ 759.20
MATERIALS									
DESCRIPTION	NO. UNITS	UNIT COST	TOTAL			Road Maintenance Wk II	20.0	\$35.96	\$ 719.20
1/2 A.C	50.0	80.00000	\$	4,000.00		Road Maintenance Wk II	20.0	\$35.96	\$ 719.20
2x4 lumber	32.0	\$3.49	\$	111.68					
filter fabric 2000 sq ft	1.0	\$325.00	\$	326.00					
3/4 base	60.0	\$15.00	\$	75.00					
MATERIALS SUBTOTAL				\$ 5,012.68					
							LABOR SUBTOTAL		\$ 3,420.20
							TOTAL COST OF LABOR	A	\$ 3,420.20
							TOTAL COST OF EQUIPMENT	B	\$ 3,934.10
							TOTAL COST OF MATERIALS (COMMUNITY CONTRIBUTION)	C	\$ 5,012.68
							TOTAL COST OF EQUIPMENT, MATERIALS AND WORK		\$ 12,366.98

Orange Rd

Dows Prairie Rd

Elbutmo Ranch Ln

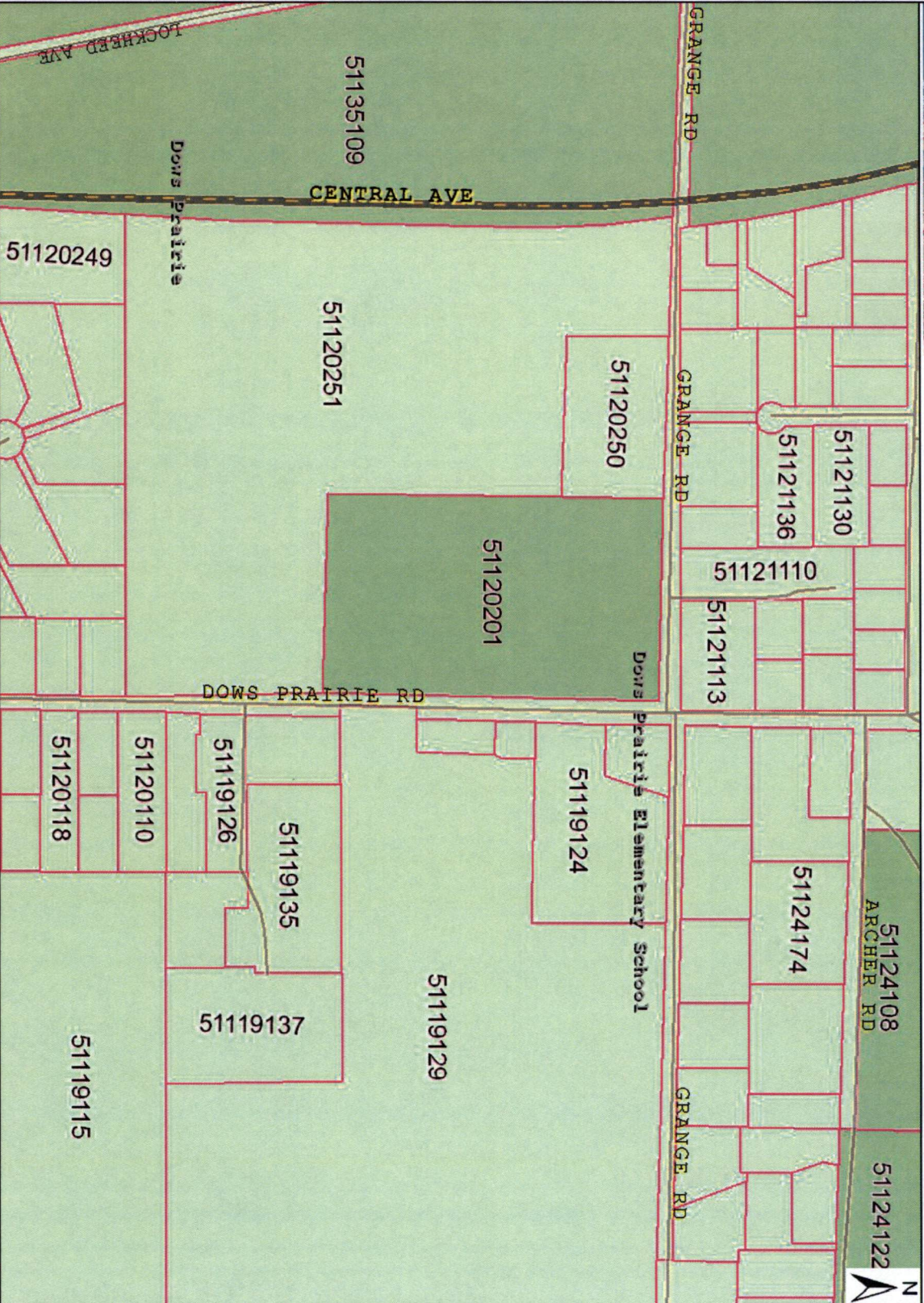
Proposed asphalt walking path

Dows Prairie Rd





Humboldt County Web GIS Map



Freeance PDF Printing System
Humboldt County Web GIS
<http://gis.co.humboldt.ca.us>

Map Disclaimer: While every effort has been made to assure the accuracy of this information, it should be understood that it does not have the force and effect of law, rule, or regulation. Should any difference or error occur, the law will take precedence. Humboldt County assumes no liability or responsibility in the use, or misuse, of this data.

Legend	
[Symbol]	1. Aerial EIM
[Symbol]	2. Parcel
[Symbol]	3. Parcel Map Legend
[Symbol]	4. Wetland
[Symbol]	5. Wetland
[Symbol]	6. Wetland
[Symbol]	7. Wetland
[Symbol]	8. Wetland
[Symbol]	9. Wetland
[Symbol]	10. Wetland
[Symbol]	11. Wetland
[Symbol]	12. Wetland
[Symbol]	13. Wetland
[Symbol]	14. Wetland
[Symbol]	15. Wetland
[Symbol]	16. Wetland
[Symbol]	17. Wetland
[Symbol]	18. Wetland
[Symbol]	19. Wetland
[Symbol]	20. Wetland
[Symbol]	21. Wetland
[Symbol]	22. Wetland
[Symbol]	23. Wetland
[Symbol]	24. Wetland
[Symbol]	25. Wetland
[Symbol]	26. Wetland
[Symbol]	27. Wetland
[Symbol]	28. Wetland
[Symbol]	29. Wetland
[Symbol]	30. Wetland
[Symbol]	31. Wetland
[Symbol]	32. Wetland
[Symbol]	33. Wetland
[Symbol]	34. Wetland
[Symbol]	35. Wetland
[Symbol]	36. Wetland
[Symbol]	37. Wetland
[Symbol]	38. Wetland
[Symbol]	39. Wetland
[Symbol]	40. Wetland
[Symbol]	41. Wetland
[Symbol]	42. Wetland
[Symbol]	43. Wetland
[Symbol]	44. Wetland
[Symbol]	45. Wetland
[Symbol]	46. Wetland
[Symbol]	47. Wetland
[Symbol]	48. Wetland
[Symbol]	49. Wetland
[Symbol]	50. Wetland
[Symbol]	51. Wetland
[Symbol]	52. Wetland
[Symbol]	53. Wetland
[Symbol]	54. Wetland
[Symbol]	55. Wetland
[Symbol]	56. Wetland
[Symbol]	57. Wetland
[Symbol]	58. Wetland
[Symbol]	59. Wetland
[Symbol]	60. Wetland
[Symbol]	61. Wetland
[Symbol]	62. Wetland
[Symbol]	63. Wetland
[Symbol]	64. Wetland
[Symbol]	65. Wetland
[Symbol]	66. Wetland
[Symbol]	67. Wetland
[Symbol]	68. Wetland
[Symbol]	69. Wetland
[Symbol]	70. Wetland
[Symbol]	71. Wetland
[Symbol]	72. Wetland
[Symbol]	73. Wetland
[Symbol]	74. Wetland
[Symbol]	75. Wetland
[Symbol]	76. Wetland
[Symbol]	77. Wetland
[Symbol]	78. Wetland
[Symbol]	79. Wetland
[Symbol]	80. Wetland
[Symbol]	81. Wetland
[Symbol]	82. Wetland
[Symbol]	83. Wetland
[Symbol]	84. Wetland
[Symbol]	85. Wetland
[Symbol]	86. Wetland
[Symbol]	87. Wetland
[Symbol]	88. Wetland
[Symbol]	89. Wetland
[Symbol]	90. Wetland
[Symbol]	91. Wetland
[Symbol]	92. Wetland
[Symbol]	93. Wetland
[Symbol]	94. Wetland
[Symbol]	95. Wetland
[Symbol]	96. Wetland
[Symbol]	97. Wetland
[Symbol]	98. Wetland
[Symbol]	99. Wetland
[Symbol]	100. Wetland
[Symbol]	101. Wetland
[Symbol]	102. Wetland
[Symbol]	103. Wetland
[Symbol]	104. Wetland
[Symbol]	105. Wetland
[Symbol]	106. Wetland
[Symbol]	107. Wetland
[Symbol]	108. Wetland
[Symbol]	109. Wetland
[Symbol]	110. Wetland
[Symbol]	111. Wetland
[Symbol]	112. Wetland
[Symbol]	113. Wetland
[Symbol]	114. Wetland
[Symbol]	115. Wetland
[Symbol]	116. Wetland
[Symbol]	117. Wetland
[Symbol]	118. Wetland
[Symbol]	119. Wetland
[Symbol]	120. Wetland
[Symbol]	121. Wetland
[Symbol]	122. Wetland
[Symbol]	123. Wetland
[Symbol]	124. Wetland
[Symbol]	125. Wetland
[Symbol]	126. Wetland
[Symbol]	127. Wetland
[Symbol]	128. Wetland
[Symbol]	129. Wetland
[Symbol]	130. Wetland
[Symbol]	131. Wetland
[Symbol]	132. Wetland
[Symbol]	133. Wetland
[Symbol]	134. Wetland
[Symbol]	135. Wetland
[Symbol]	136. Wetland
[Symbol]	137. Wetland
[Symbol]	138. Wetland
[Symbol]	139. Wetland
[Symbol]	140. Wetland
[Symbol]	141. Wetland
[Symbol]	142. Wetland
[Symbol]	143. Wetland
[Symbol]	144. Wetland
[Symbol]	145. Wetland
[Symbol]	146. Wetland
[Symbol]	147. Wetland
[Symbol]	148. Wetland
[Symbol]	149. Wetland
[Symbol]	150. Wetland
[Symbol]	151. Wetland
[Symbol]	152. Wetland
[Symbol]	153. Wetland
[Symbol]	154. Wetland
[Symbol]	155. Wetland
[Symbol]	156. Wetland
[Symbol]	157. Wetland
[Symbol]	158. Wetland
[Symbol]	159. Wetland
[Symbol]	160. Wetland
[Symbol]	161. Wetland
[Symbol]	162. Wetland
[Symbol]	163. Wetland
[Symbol]	164. Wetland
[Symbol]	165. Wetland
[Symbol]	166. Wetland
[Symbol]	167. Wetland
[Symbol]	168. Wetland
[Symbol]	169. Wetland
[Symbol]	170. Wetland
[Symbol]	171. Wetland
[Symbol]	172. Wetland
[Symbol]	173. Wetland
[Symbol]	174. Wetland
[Symbol]	175. Wetland
[Symbol]	176. Wetland
[Symbol]	177. Wetland
[Symbol]	178. Wetland
[Symbol]	179. Wetland
[Symbol]	180. Wetland
[Symbol]	181. Wetland
[Symbol]	182. Wetland
[Symbol]	183. Wetland
[Symbol]	184. Wetland
[Symbol]	185. Wetland
[Symbol]	186. Wetland
[Symbol]	187. Wetland
[Symbol]	188. Wetland
[Symbol]	189. Wetland
[Symbol]	190. Wetland
[Symbol]	191. Wetland
[Symbol]	192. Wetland
[Symbol]	193. Wetland
[Symbol]	194. Wetland
[Symbol]	195. Wetland
[Symbol]	196. Wetland
[Symbol]	197. Wetland
[Symbol]	198. Wetland
[Symbol]	199. Wetland
[Symbol]	200. Wetland
[Symbol]	201. Wetland
[Symbol]	202. Wetland
[Symbol]	203. Wetland
[Symbol]	204. Wetland
[Symbol]	205. Wetland
[Symbol]	206. Wetland
[Symbol]	207. Wetland
[Symbol]	208. Wetland
[Symbol]	209. Wetland
[Symbol]	210. Wetland
[Symbol]	211. Wetland
[Symbol]	212. Wetland
[Symbol]	213. Wetland
[Symbol]	214. Wetland
[Symbol]	215. Wetland
[Symbol]	216. Wetland
[Symbol]	217. Wetland
[Symbol]	218. Wetland
[Symbol]	219. Wetland
[Symbol]	220. Wetland
[Symbol]	221. Wetland
[Symbol]	222. Wetland
[Symbol]	223. Wetland
[Symbol]	224. Wetland
[Symbol]	225. Wetland
[Symbol]	226. Wetland
[Symbol]	227. Wetland
[Symbol]	228. Wetland
[Symbol]	229. Wetland
[Symbol]	230. Wetland
[Symbol]	231. Wetland
[Symbol]	232. Wetland
[Symbol]	233. Wetland
[Symbol]	234. Wetland
[Symbol]	235. Wetland
[Symbol]	236. Wetland
[Symbol]	237. Wetland
[Symbol]	238. Wetland
[Symbol]	239. Wetland
[Symbol]	240. Wetland
[Symbol]	241. Wetland
[Symbol]	242. Wetland
[Symbol]	243. Wetland
[Symbol]	244. Wetland
[Symbol]	245. Wetland
[Symbol]	246. Wetland
[Symbol]	247. Wetland
[Symbol]	248. Wetland
[Symbol]	249. Wetland
[Symbol]	250. Wetland

**Rural Transportation Access Partnership (RTAP)
Initial Consultation Application for Hospice of Humboldt
April 6, 2015**

Project Name:

Freese Avenue Resurfacing and Water Main Upgrade Project at
Hospice of Humboldt, 3327 Timber Fall Court, Eureka Ca 95503

Proposed Project Location: Freese Avenue from Harris Street to Elk Street. This will also include a small portion of Elk Street (see attached Location Map).

Intended Project Outcomes: The desired outcome of the project is to improve the roadway, municipal water service, and fire protection capacity to the Freeze Avenue neighborhood. This will also fulfill the obligation that Hospice Humboldt made to the Humboldt County Building and Planning Department to re-surface Freese Avenue.

Project Need: Freese Avenue is showing signs of wear such and has been in need of repair for some years. A visual inspection prior to the onset of construction at the adjacent Hospice of Humboldt campus identified many potholes and peeling and rutting asphalt. The construction traffic associated with the campus development has likely exacerbated the wear of the road to the point where the surface should be replaced. Also, in need of replacement is the water main under Freese Avenue that was built in the 1950s and 60s. The water main is a combination of steel and asbestos lined concrete and is scheduled to be replaced by PVC pipe by the Humboldt Community Services District (HCSD) in July 2015. The condition of the laterals and connections is unknown. Although, firewater pressure to the neighborhood is sufficient to meet code, there is currently not a redundancy of supply. While redundancy is not required, is preferred.

Project Description: To resurface and upgrade municipal water and fire flow service on Freese Avenue from Harris Street to Elk Street. This project will specifically include:

- Replace approximately 500' of 6" steel and 400' of 6" asbestos lined concrete water main with 8" PVC pipe. Work to be done by HSCD.
- Replace all associated residential laterals and connectors. Work to be done by HCSD.
- Install one new additional fire hydrant. Work to be done HCSD but paid for through reimbursement by Hospice.
- Complete a 'loop' connection to provide redundant fire flows increased from residential to commercial capacity. Work to be done HCSD but paid for through reimbursement by Hospice.
- Resurfacing approximately 45,000 square feet of roadway. Hospice and HCSD would cost share for the delivery of concrete asphalt, fabric and tack oil, as shown on the

attached budget worksheet, and the County would use their labor and equipment to do the preparation of the roadway and use their labor and paving machine to apply the asphalt to the roadway.

- Raising water valve access cans and manholes to grade after paving. Work to be done by Hospice and HCSD as per attached budget worksheet.
- Apply striping of a stop bar at Freese Avenue and Harris Street. Work to be done by Hospice.

Primary Project Contact:

Laura Kadlecik, Owners Project Representative
P.O. Box 165, Arcata, Ca 95518
P: 707-407-5192
lkadlecik@hwr-engr.com

Hospice of Humboldt Contact:

Joe Rogers, Executive Director
2010 Myrtle Avenue, Eureka, CA 95501
P: 707-441-0105 ext 304
F: 707-445-2230
jrogers@hospiceofhumboldt.org

Agency and Contractor Project Contacts:

Art Reeves, County of Humboldt Department of Public Works
P: 707.445.7241
areeve@co.humboldt.ca.us

Mickey Hulstrom, Planner, Humboldt Community Services District
P: 707.443.1340 Ext. 225
mhulstrom@humboldtcsd.com

Bruce McIntosh, Estimator/Project Manager, Kern Construction
P: (707) 826-8686
F: (707) 826-1888
Cell: (707) 498-0213
bmcintosh@kernenconstruction.com

Have early indication of neighborhood support? Yes. Both the Hospice and RTAP project teams have had multiple discussions and interactions over an extended period of time with the Freese Ave. residents. All residents are in favor of the road resurfacing and water supply improvements and the project appears to have strong support in the community.

Exists in County Right of Way? Yes, the entire resurfacing project is located in the county right of way.

Need additional ROW? No, there are no additional landowners requiring easements.

Involve multiple jurisdictions? Yes, Hospice and the County of Humboldt will be working with the Humboldt Community Services District as they have water main and laterals in the roadway that will be replaced in conjunction with this project.

List project opportunities: This is an opportunity to:

1. Partner agencies and leverage resources for much needed road and utility maintenance and improvements for the Freese Avenue neighborhood.
2. Improve water service to the residences on Freese Avenue.
3. Increase fire flows, add a fire hydrant and provide a loop connection that will create redundancy.
4. Provide redundant emergency vehicle access and connectivity between Freese Avenue and Timber Fall Ct. thorough the Hospice House site.

List Project Challenges: All known challenges are the ones that are typically associated with road and utility work of this nature. Work schedules, resident relations, materials availability and weather are some of the day to day challenges that would be expected on a project of this scale.

Describe early indication of financial or material project support that will be required to succeed: See attached budget worksheet.

Note other community goals that are addressed by this project concept.

The resurfacing, water main and fire flow upgrade project is directly connected to the Hospice of Humboldt Campus project at Timber Fall Court. Hospice of Humboldt intends to serve the community by providing a campus that includes the Ida Emerson Hospice House, a home health/administration building (including grief support and outreach services) and a chapel. This location will be the only local provider of an array of end of life care services.

Item	Unit Cost	Unit of Measure	Quantity	Total Value			
				Hospice of Humboldt	HCSO	County	Total By Item
Project Planning							
Project Management	\$ 125.00	Hour	40	\$ 5,000.00			\$ 5,000.00
Project Design	\$ 125.00	Hour			\$ 1,125.00		\$ 1,125.00
Project Permitting	\$ 125.00	Hour			\$ 1,125.00		\$ 1,125.00
Materials and/or Installation							
Concrete Asphalt, delivered	\$ 85.00	ton	430	\$ 36,550.00			
Paving Fabric and Tack Oil, delivered	\$ 20.00	unit	250	\$ 5,000.00			\$ 5,000.00
Trenching Material Replacement	\$ 6.00	sq-ft	2700		\$ 16,200.00		\$ 16,200.00
Replace Water Main w/ 8" PVC	\$ 50.00	sq-ft	900		\$ 45,000.00		\$ 45,000.00
Replace Residential Laterals (25' each)	\$ 25.00	sq-ft	525		\$ 13,125.00		\$ 13,125.00
Raise Valve and Manhole Covers	\$ 500.00	each	10	\$ 3,500.00	\$ 1,500.00		\$ 5,000.00
Loop Connection	\$ 1,500.00	each	1	\$ 1,500.00			\$ 1,500.00
Fire Hydrant	\$ 4,500.00	each	1	\$ 4,500.00			\$ 4,500.00
Stop Bar Striping				\$ 2,000.00			\$ 2,000.00
Road Work Labor (Co.)							
Co. Foreman	\$ 46.00	hr	\$ 10.00			\$ 460.00	\$ 460.00
Co. Road Maint. III	\$ 40.00	hr	\$ 70.00			\$ 2,800.00	\$ 2,800.00
Co. Road Maint. II	\$ 37.00	hr	\$ 90.00			\$ 3,330.00	\$ 3,330.00
Equipment							
Paver	\$ 69.00	Hour	10			\$ 690.00	\$ 690.00
Roller	\$ 49.00	Hour	10			\$ 490.00	\$ 490.00
Trailer	\$ 33.00	Hour	4			\$ 132.00	\$ 132.00
Dump Truck (County)	\$ 50.00	Hour	10			\$ 500.00	\$ 500.00
Total per Contributor				\$ 58,050.00	\$ 78,075.00	\$ 8,402.00	\$ 107,977.00
10% contingency				\$ 580.50	\$ 780.75	\$ 84.02	\$ 1,079.77
Total Estimate				\$ 58,630.50	\$ 78,855.75	\$ 8,486.02	\$ 145,972.27



Figure 1. Location Map